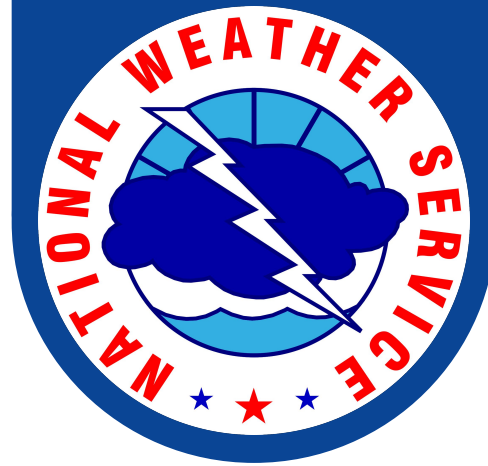




FEMA



Prepared by
Mark Wiley

FEMA Region 6 Weather Threat Briefing

Friday, March 14, 2025

Disclaimer: The purpose of this briefing is to provide a **Regional** weather threat assessment and is meant as a general overview. County/Parish decision makers should consult their local NWS forecast offices for the latest detailed, local weather information. To find your local NWS forecast office, go to www.weather.gov/srh.





Summary

- **Extreme (level 3 of 3) fire weather conditions today in W/N TX, TX Panhandle, OK. Elevated to critical (levels 1-2 of 3) fire weather concerns through the middle of next week for portions of NM, W/C/S TX, TX/OK Panhandle, and OK.**
- **Moderate risk (level 4 of 5) for severe storms in far NE AR today and on Saturday in E LA. Enhanced risk (level 3 of 5) for severe storms today E AR and over SE AR and S LA on Saturday. Potential for strong tornadoes across the enhanced and moderate risk areas.**
- **Minor (level 2 of 5) impacts in NM end later today due to snow. However, due to high winds, there may be periods of moderate impacts (level 3 of 5), mostly in mountains.**
- **Marginal risk (level 1 of 4) for heavy rainfall in NE AR today and E LA Saturday.**
- **Minor river flooding forecast through the week in E TX, AR, and LA.**





FEMA Region 6 Threat Matrix

Next 7 days

	Friday, Mar 14	Saturday, Mar 15	Sunday, Mar 16	Monday, Mar 17	Tuesday, Mar 18	Wednesday, Mar 19	Thursday, Mar 20
Severe Storms	NE AR	E LA					
	E AR	SE AR, S LA					
Heavy Rain / Flash Flooding	NE AR	E LA					
Fire Weather	OK, TX E NM	W/C STX	STX	SW TX	SE NM, W TX, TX Panhandle	SE NM, W/SW TX	
Winter	NM						
River Flooding	ETX, AR, LA	ETX, AR, LA	ETX, AR, LA	ETX, AR, LA	ETX, AR, LA	ETX, AR, LA	ETX, AR, LA

**Threat levels are based on FEMA Region 4 criteria. State or local threat level criteria may differ.*
For more details on the colors in the threat matrix refer to the last slide in this briefing.*

Risk Levels	Little to None	Minor	Moderate	Major	Extreme
-------------	----------------	-------	----------	-------	---------



5-Day Precipitation Forecast & River Flood Status

Note: Even though the image displays 5 days of forecasted rainfall, river forecasts only include 1-2 days of rainfall

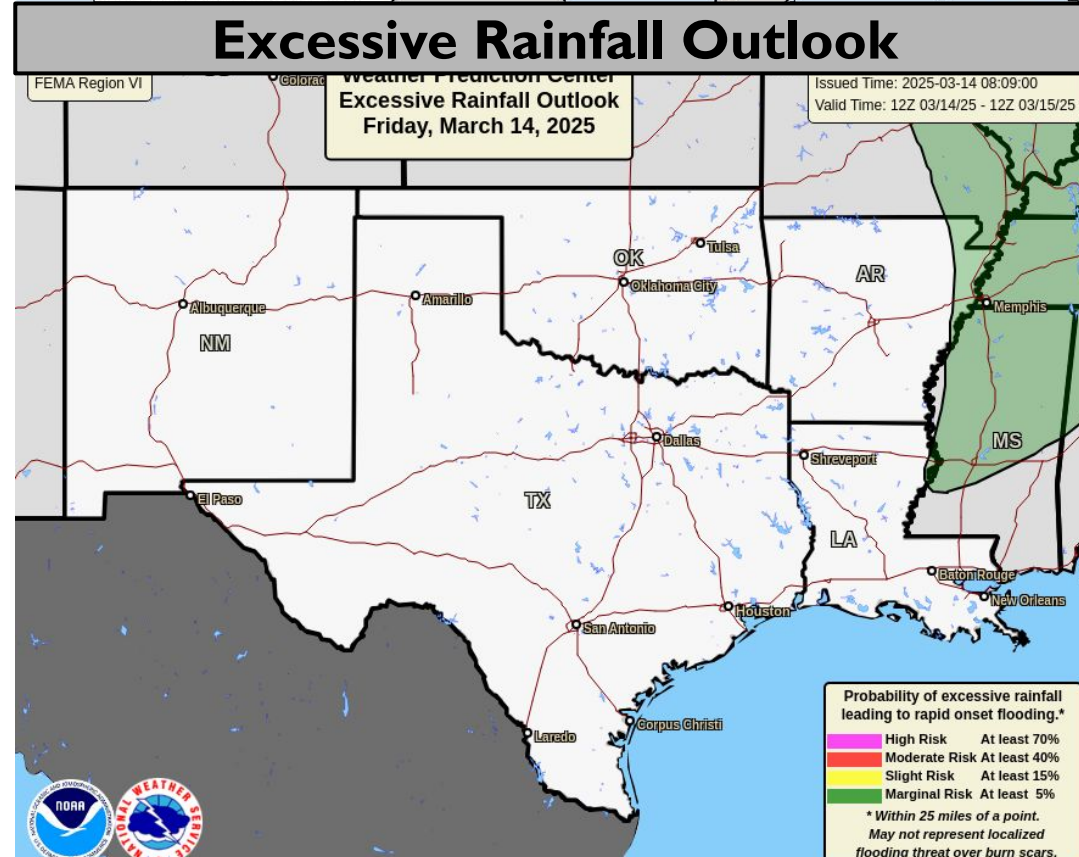
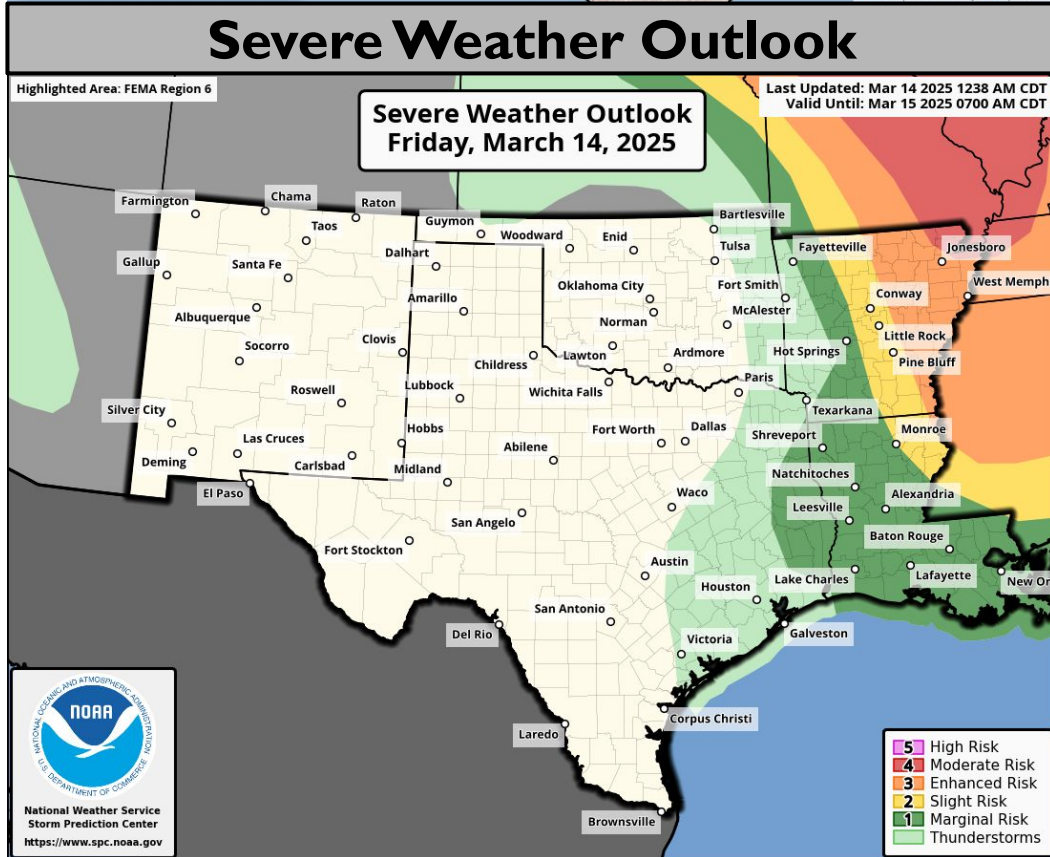
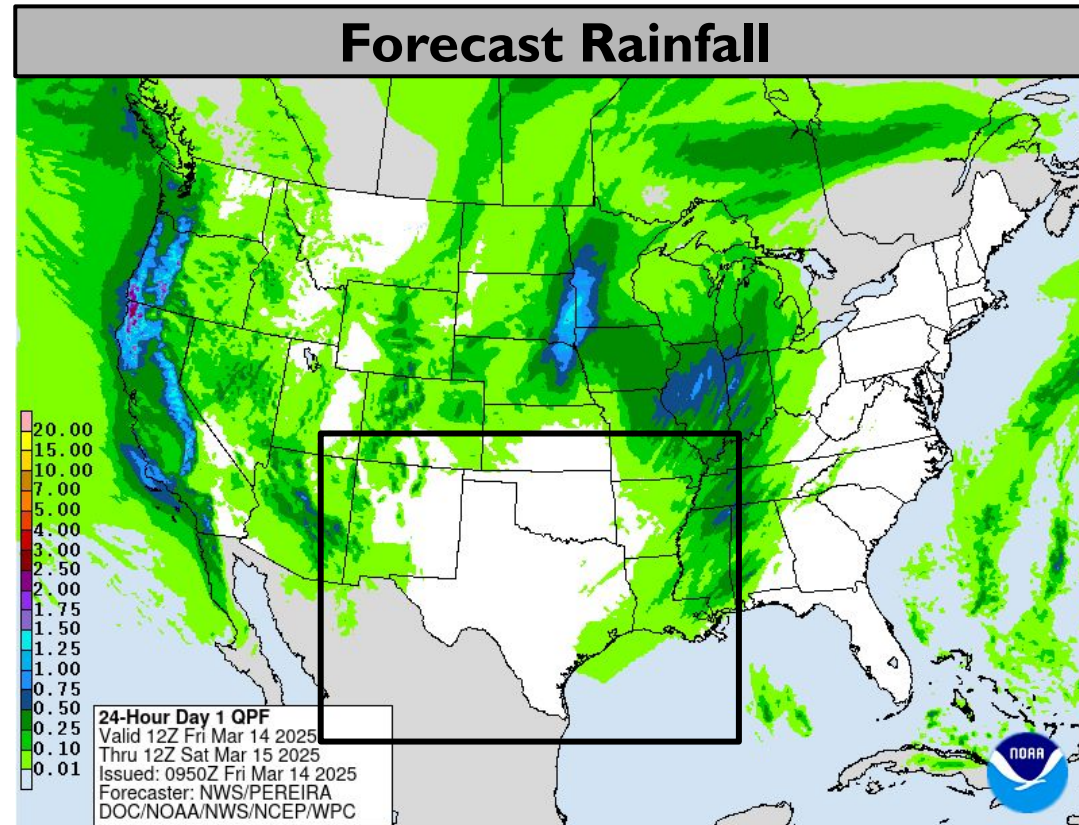
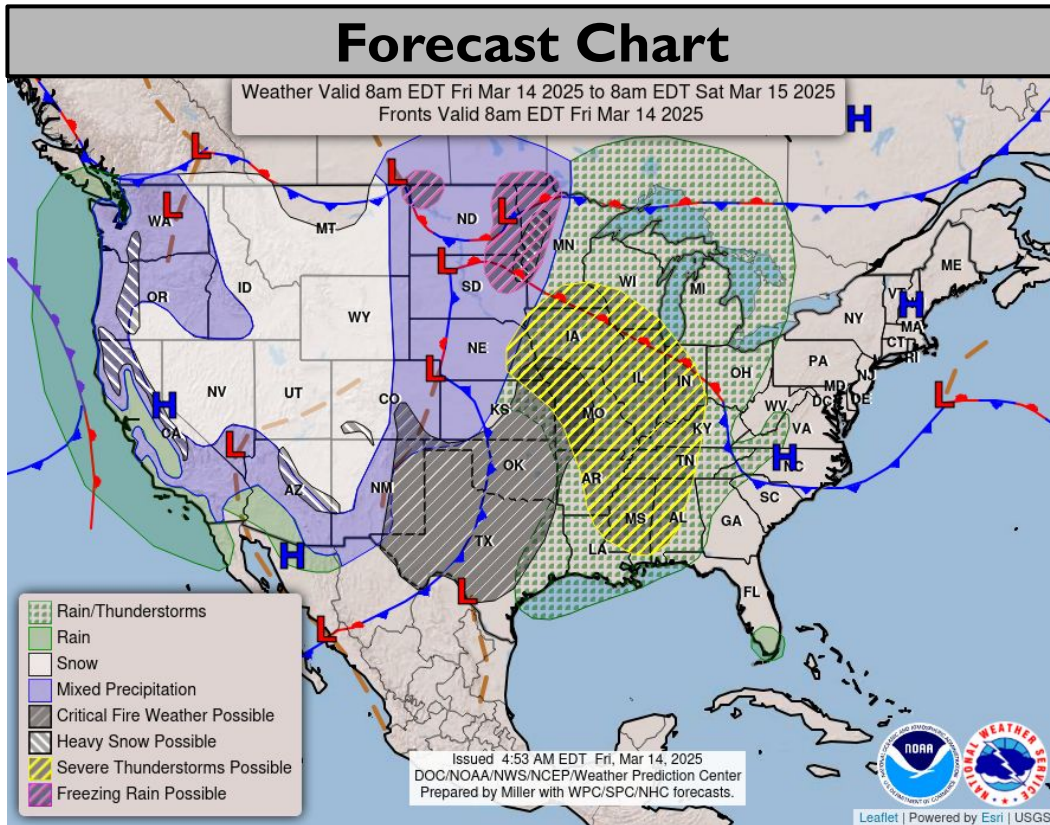


Minor river flooding will continue in E TX, AR, LA through the week with flooding of low-lying pastures, swampland, and secondary roads.

Note: Numerical levels (e.g. level 1 of 4) will not be assigned to riverine flooding due to the varying levels of impacts across flood categories.



Today's Weather



Moderate risk (level 4 of 5) of severe storms for far NE AR. Timing: Late afternoon-midnight.

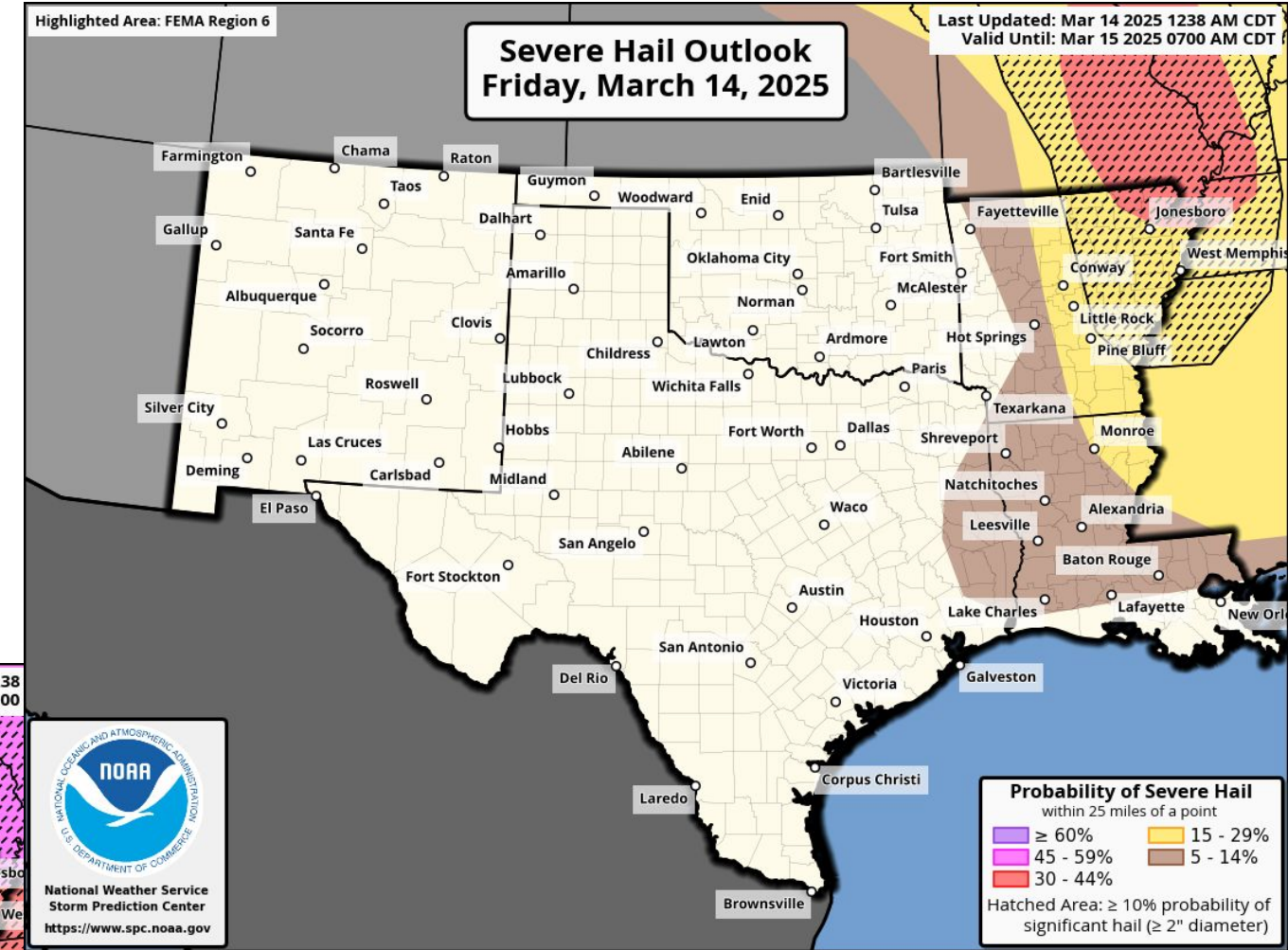
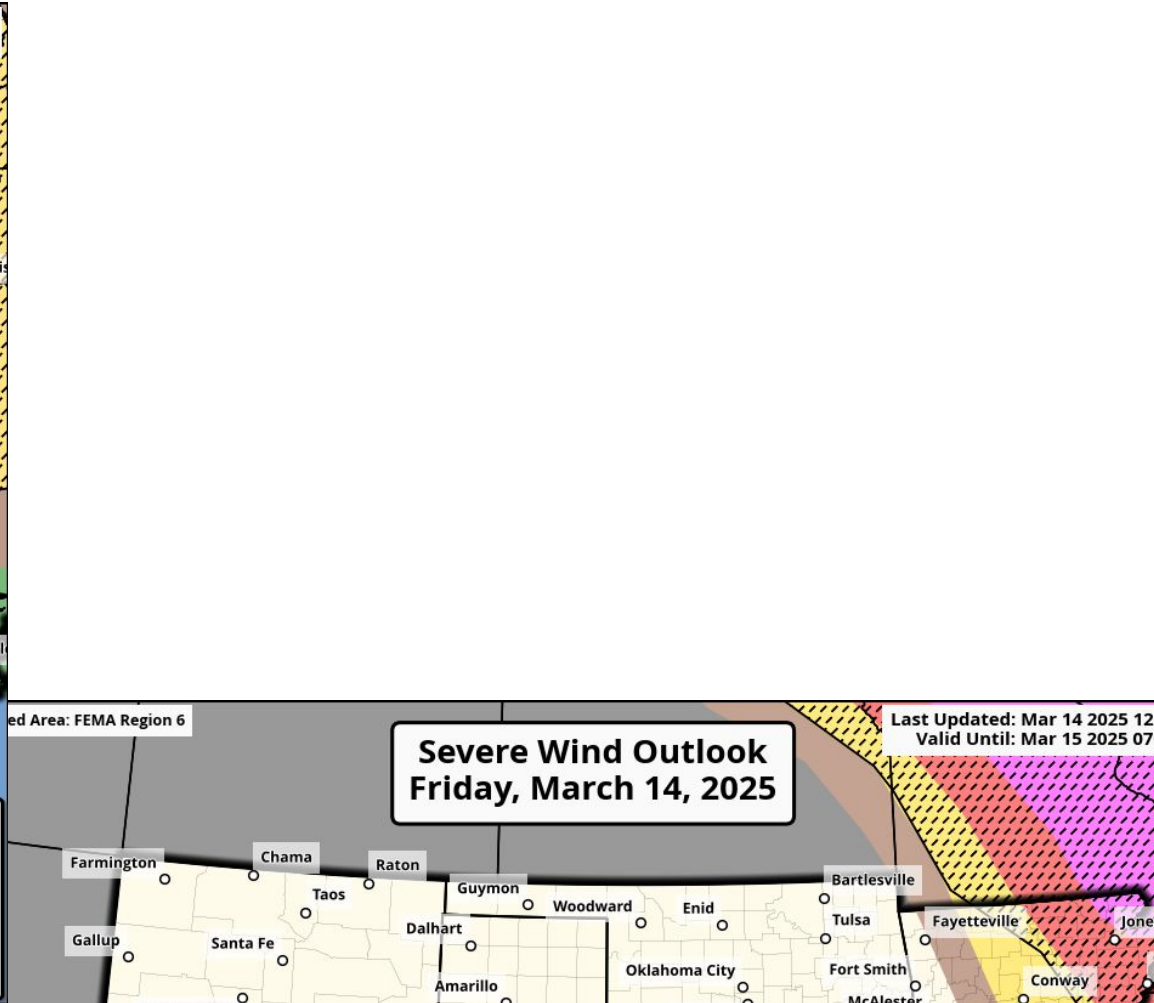
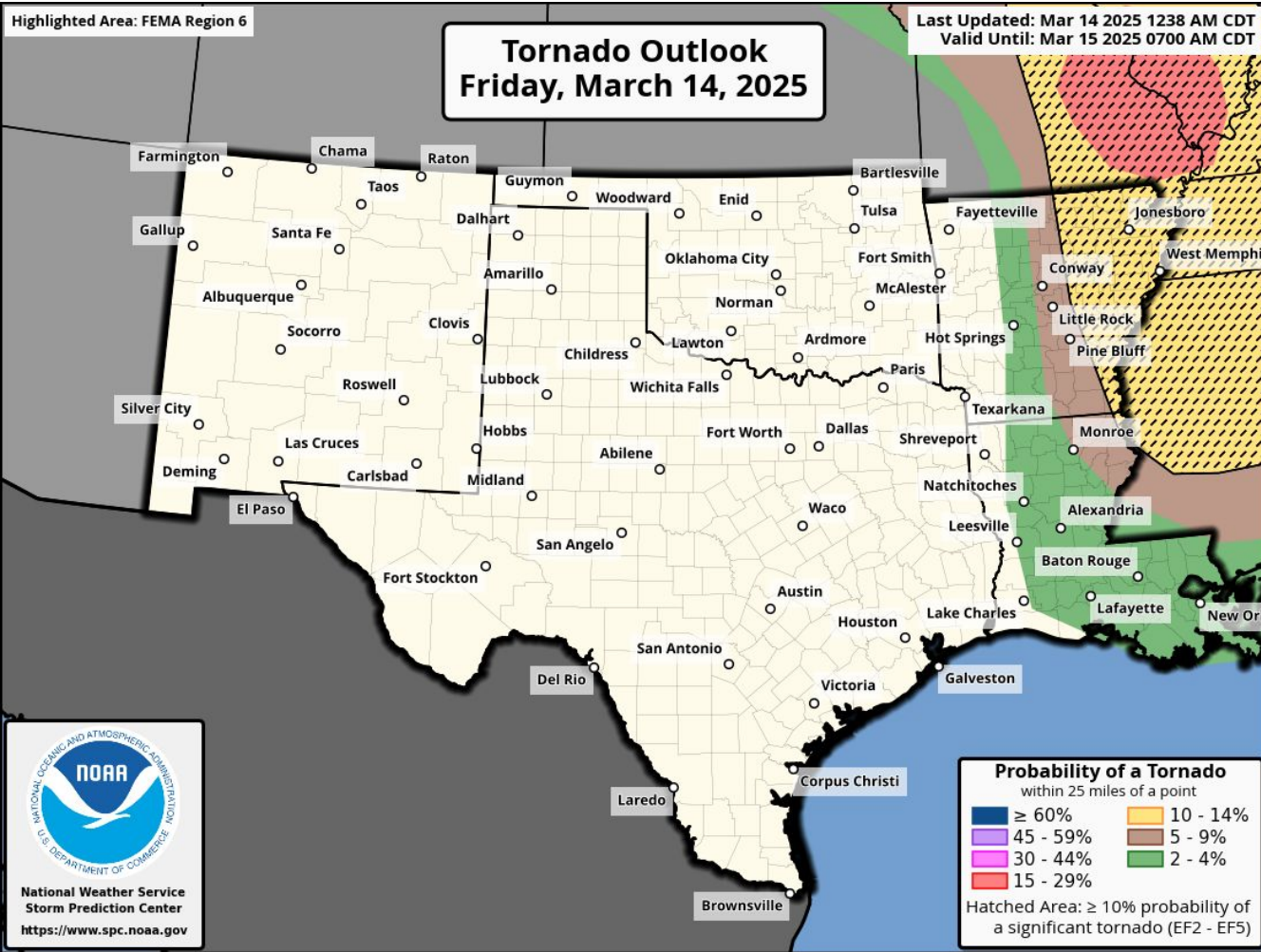
Extreme (level 3 of 3) fire weather concerns for OK, TX, E NM

Enhanced risk (level 3 of 5) of severe storms for E AR.

Minor impacts (level 2 of 5) from winter weather due to snow in NM. High winds may cause moderate impacts (level 3 of 5) due to blizzard like conditions.



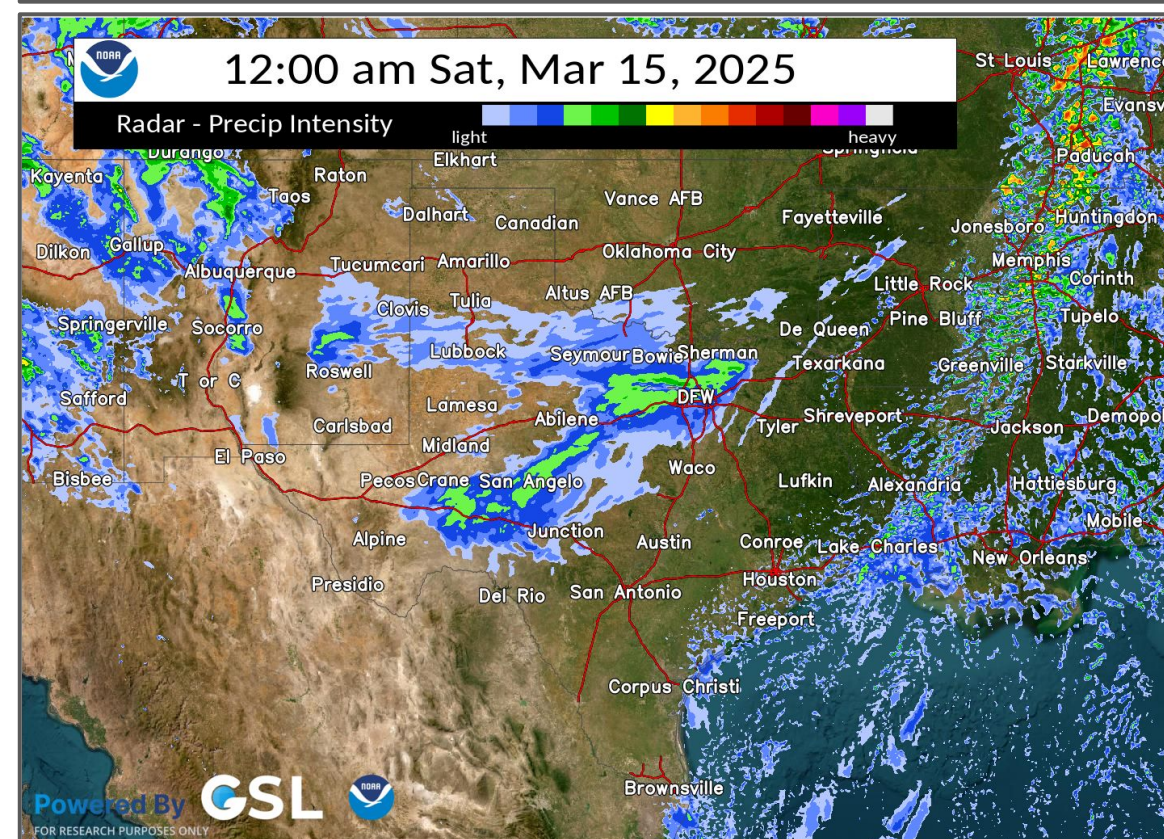
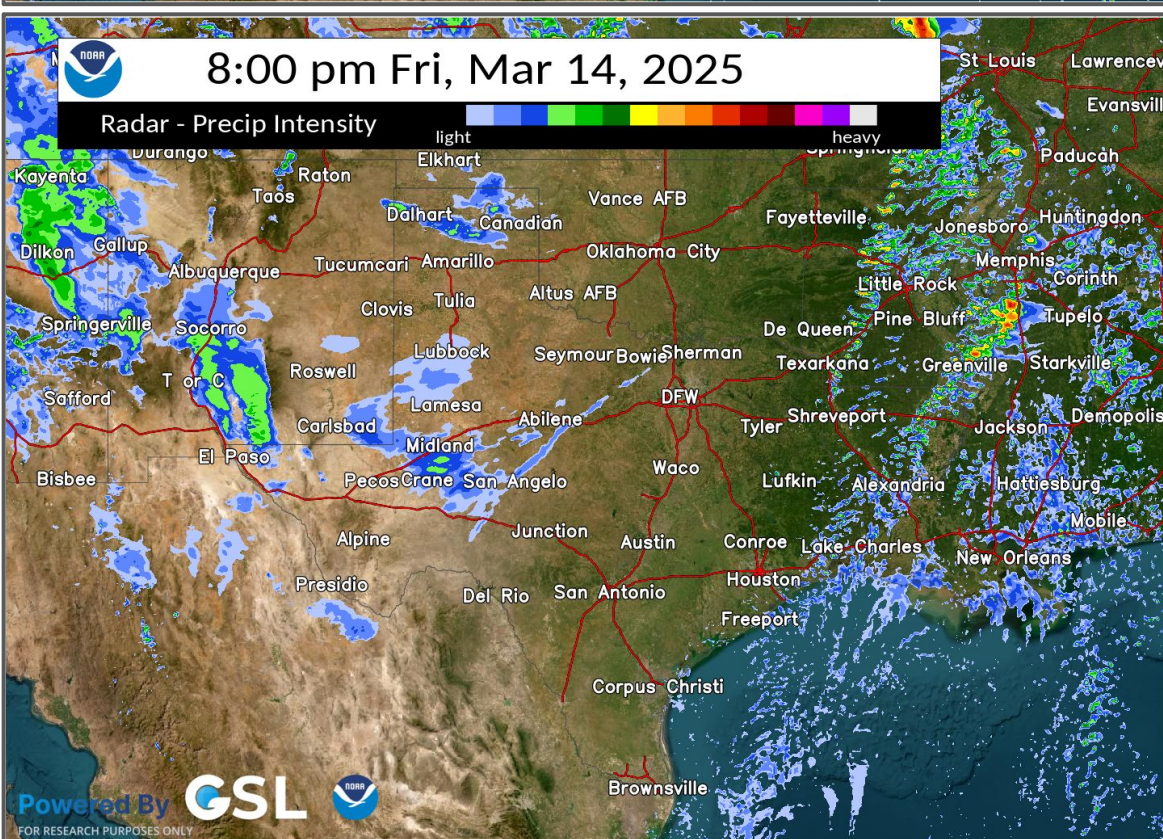
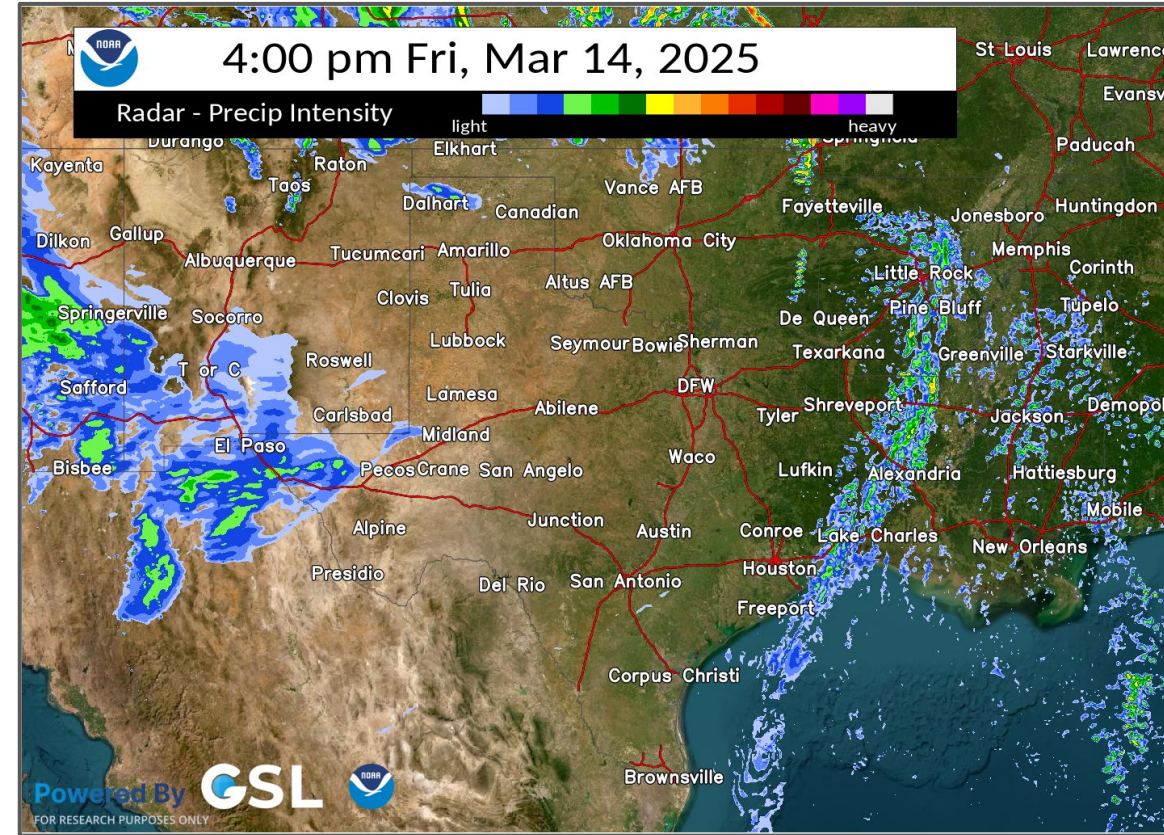
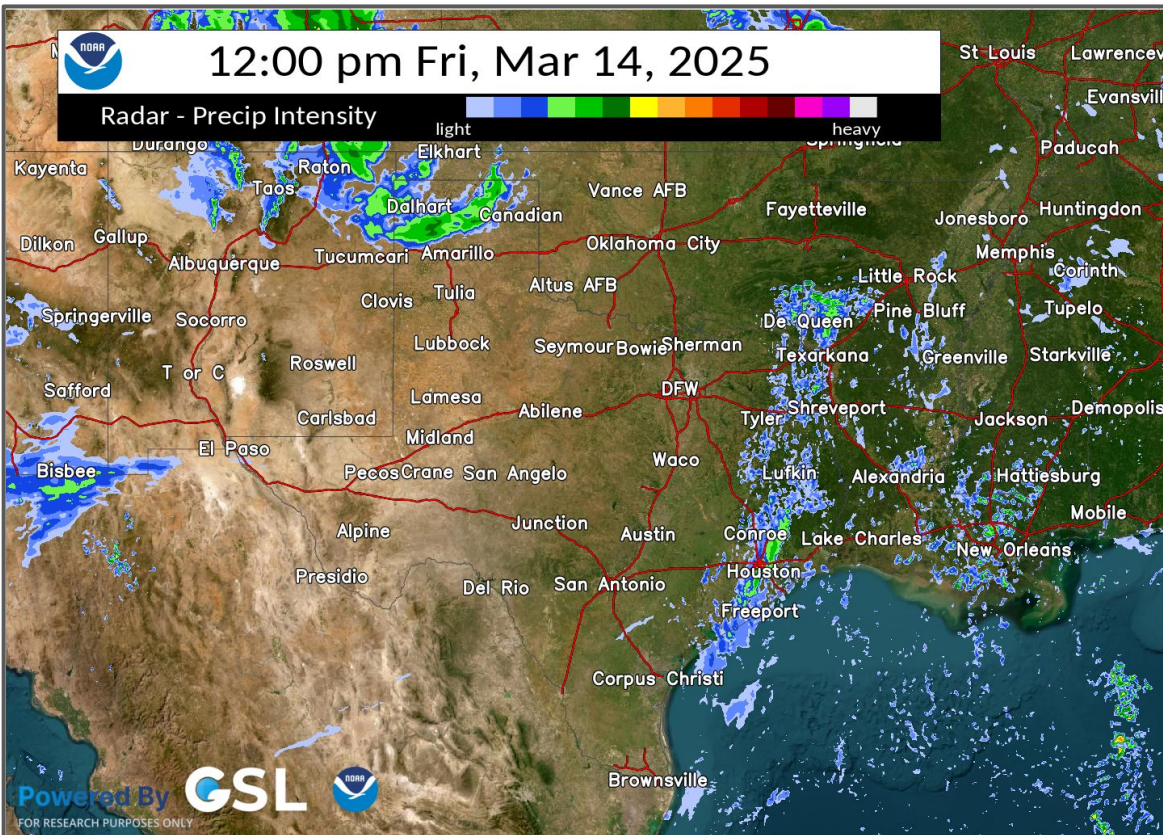
Today's Tornado & Severe Wind / Hail Probabilities





Potential Evolution of Storms Today

NOTE: This is just one model's prediction of the storms, actual timing and locations may be different

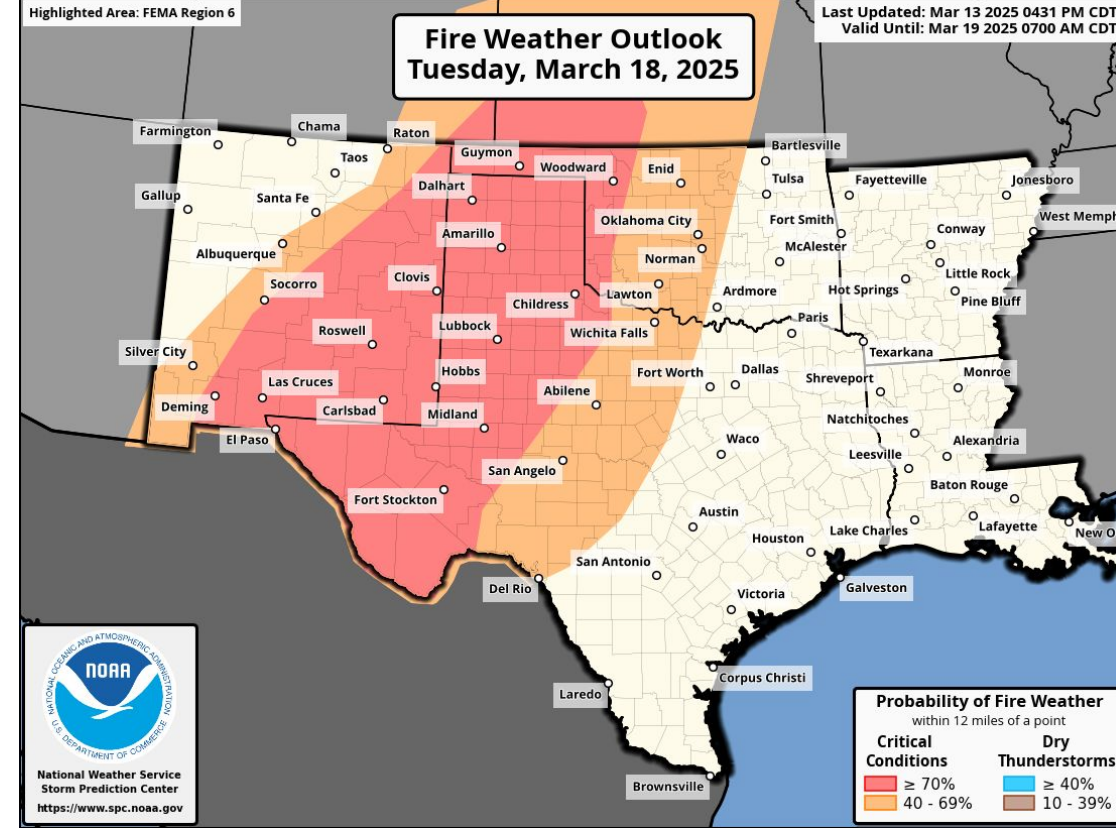
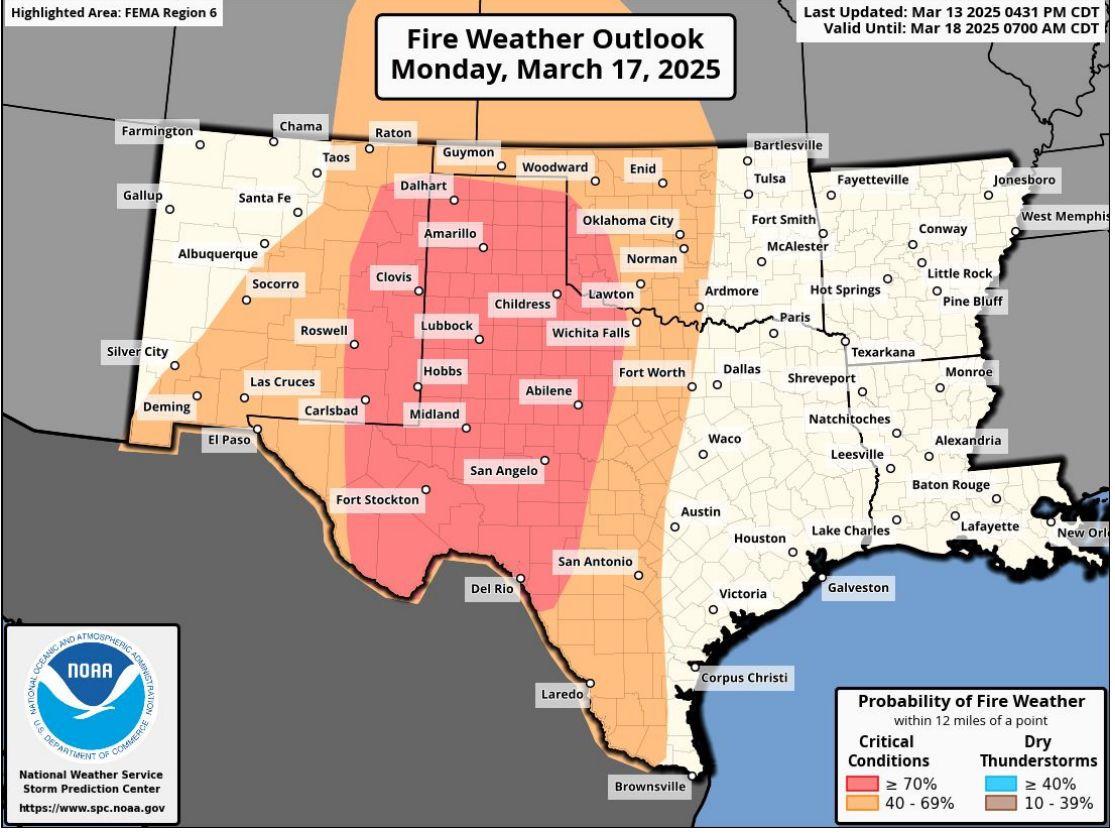
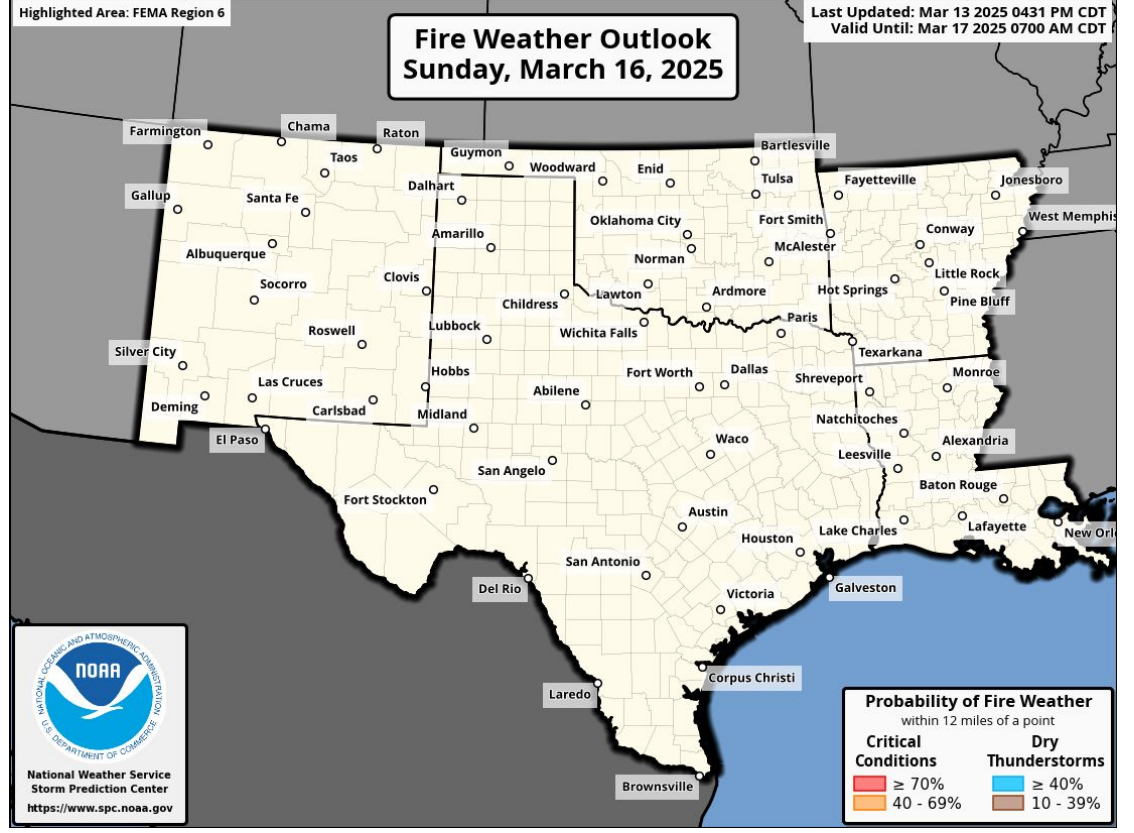
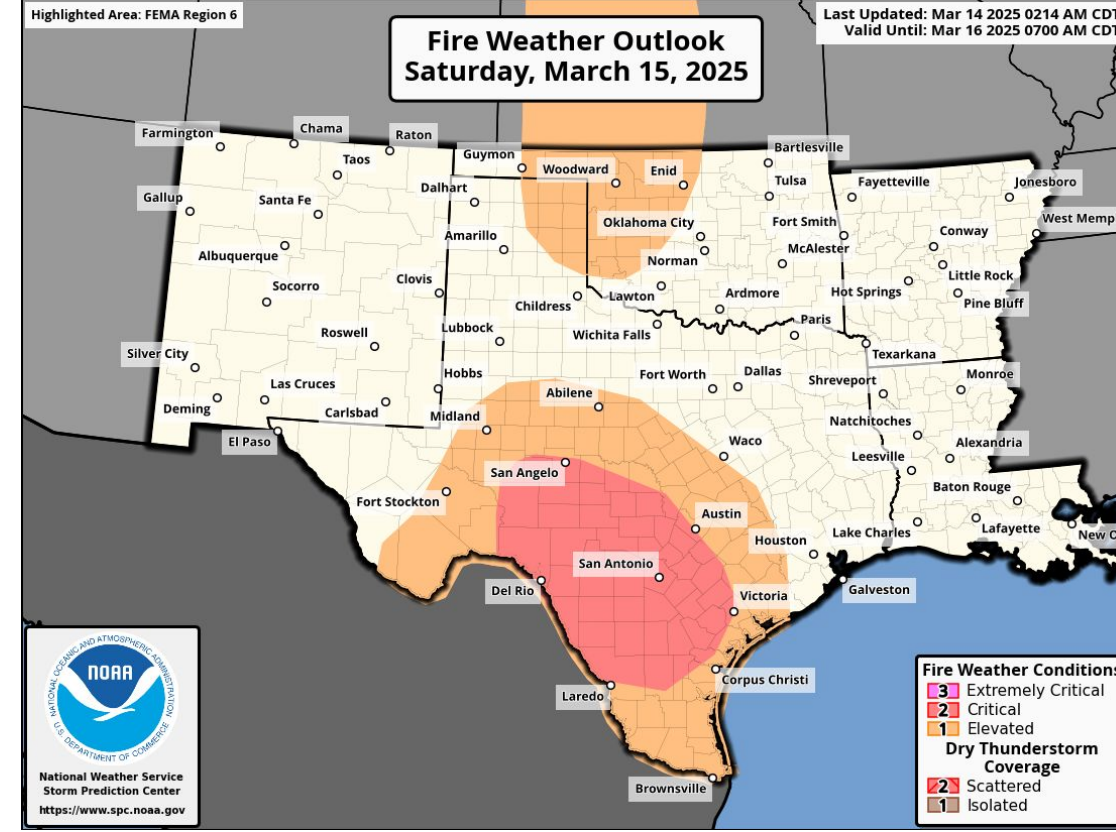
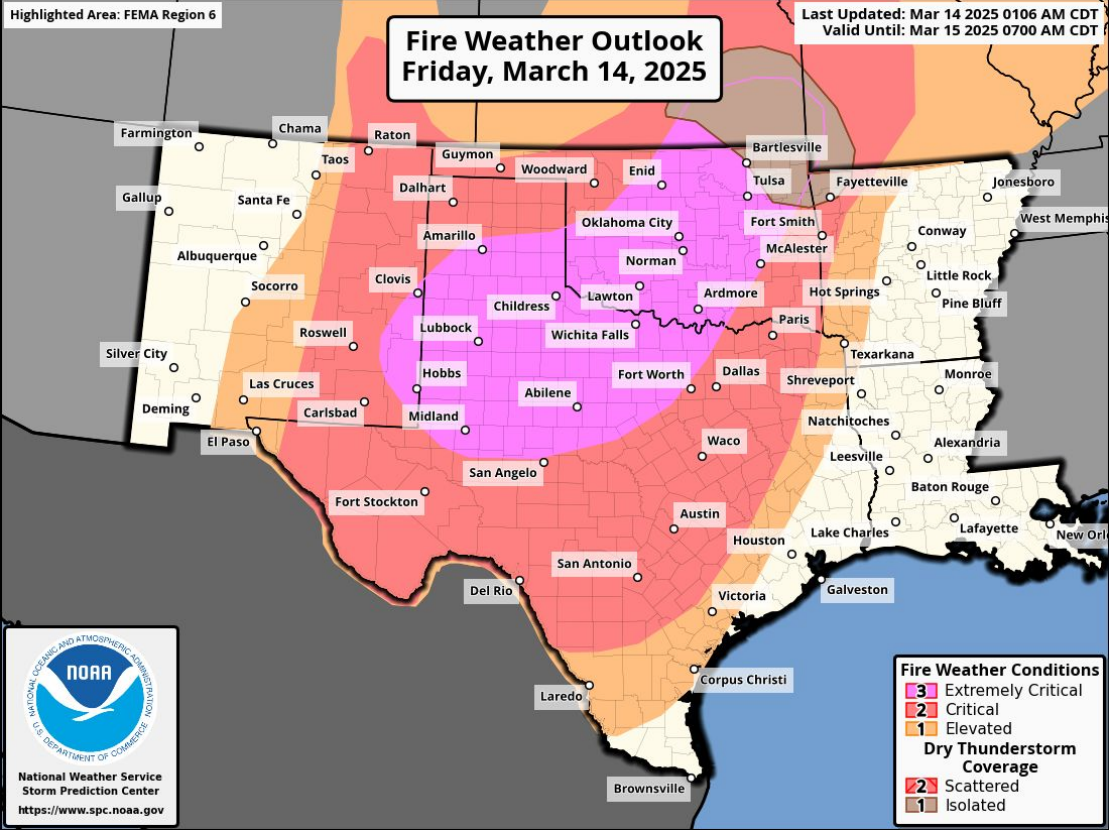
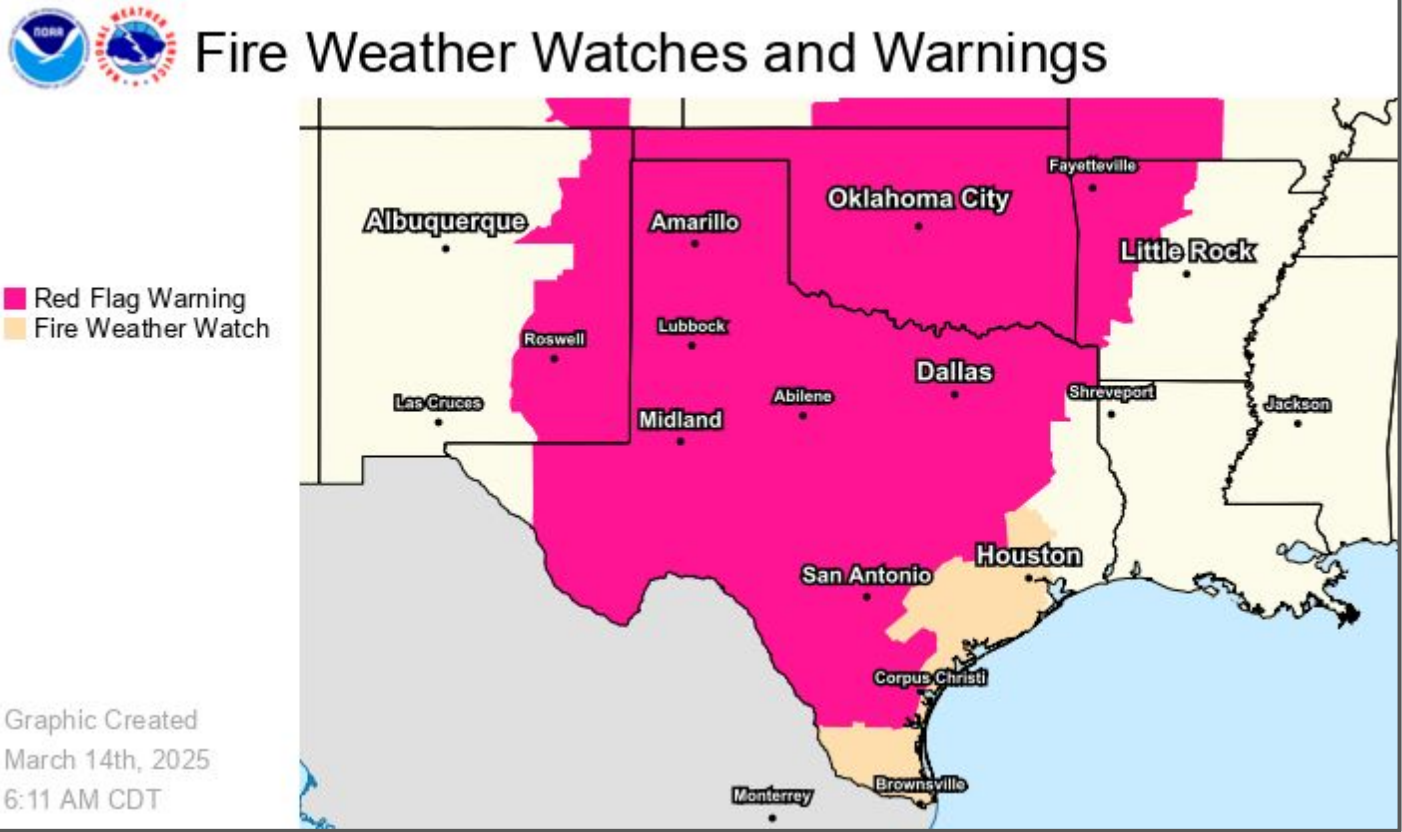


Timing of Severe Storms:

AR/LA: Start between 4-6pm, and move out of the Region by around midnight.



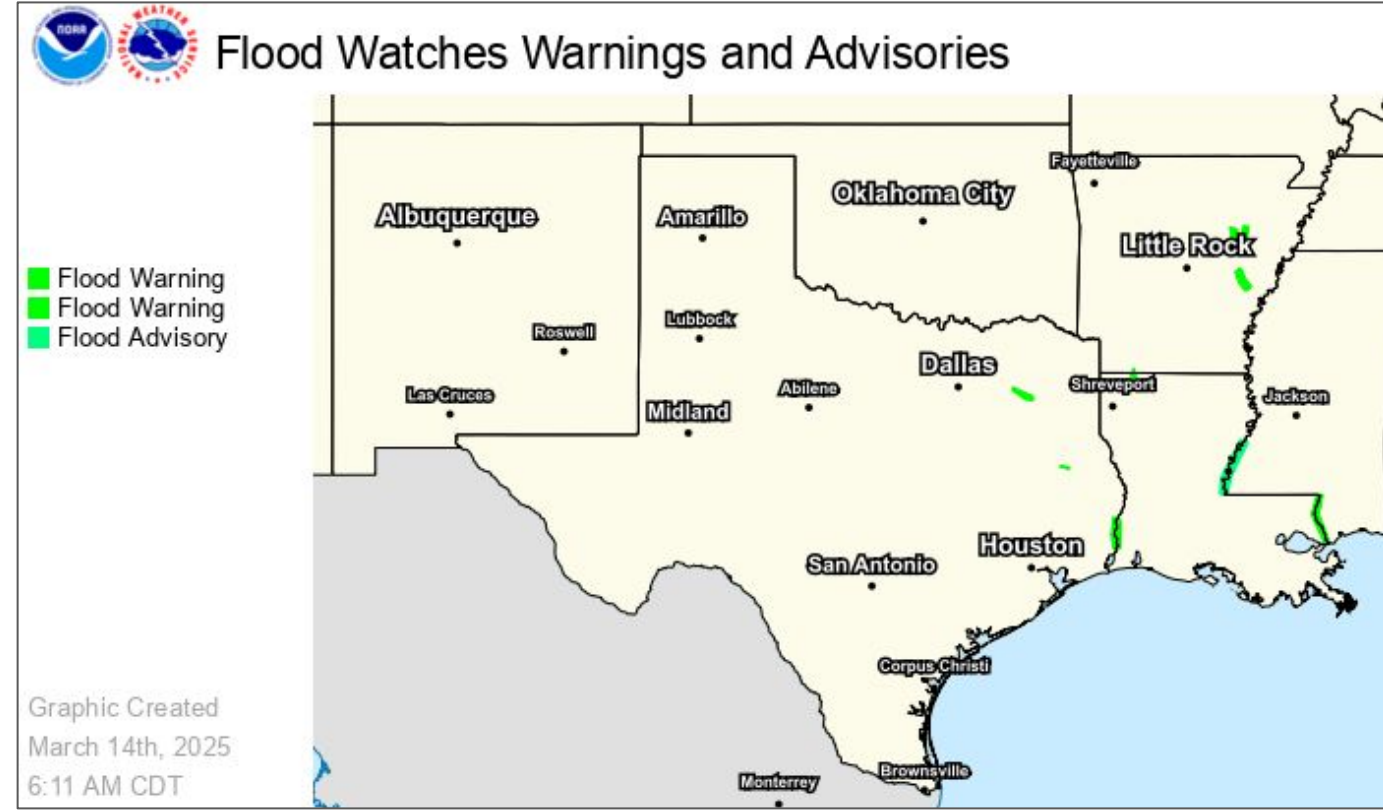
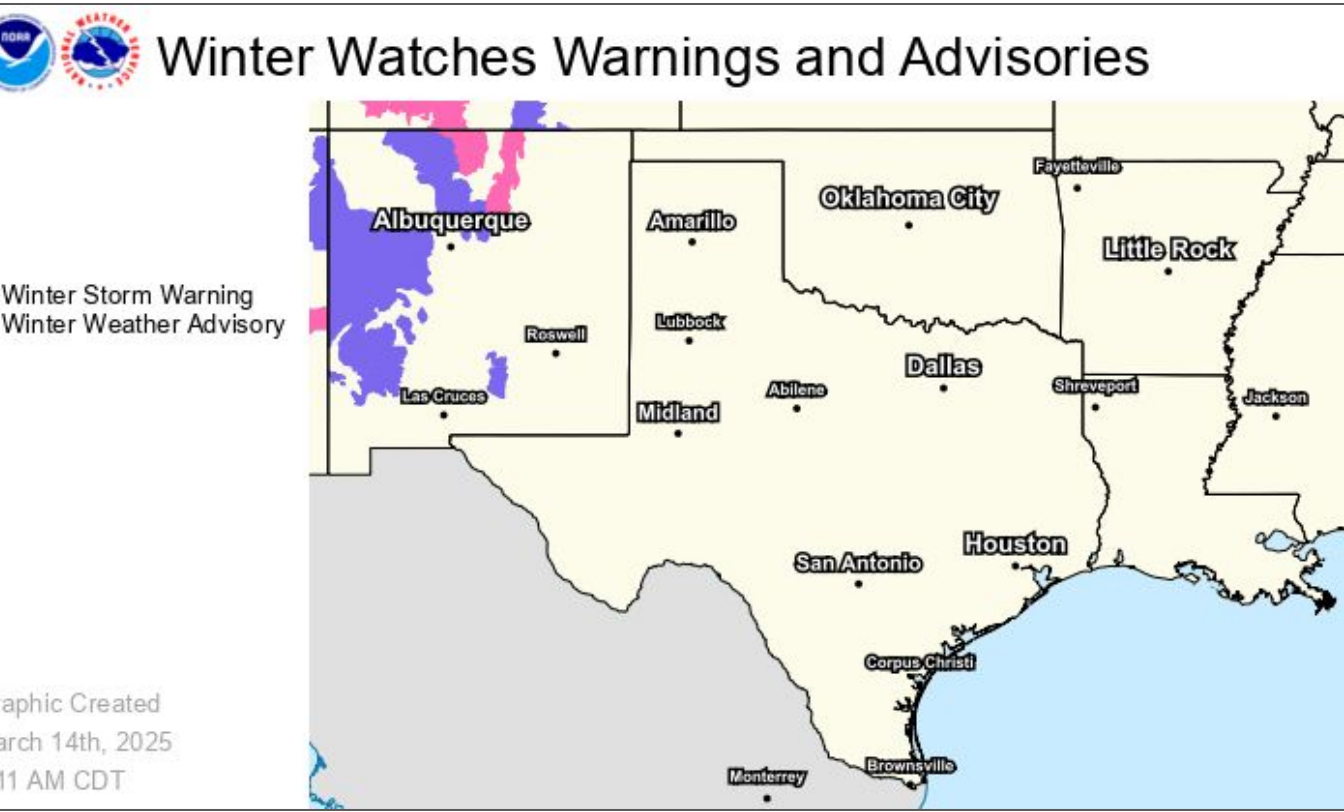
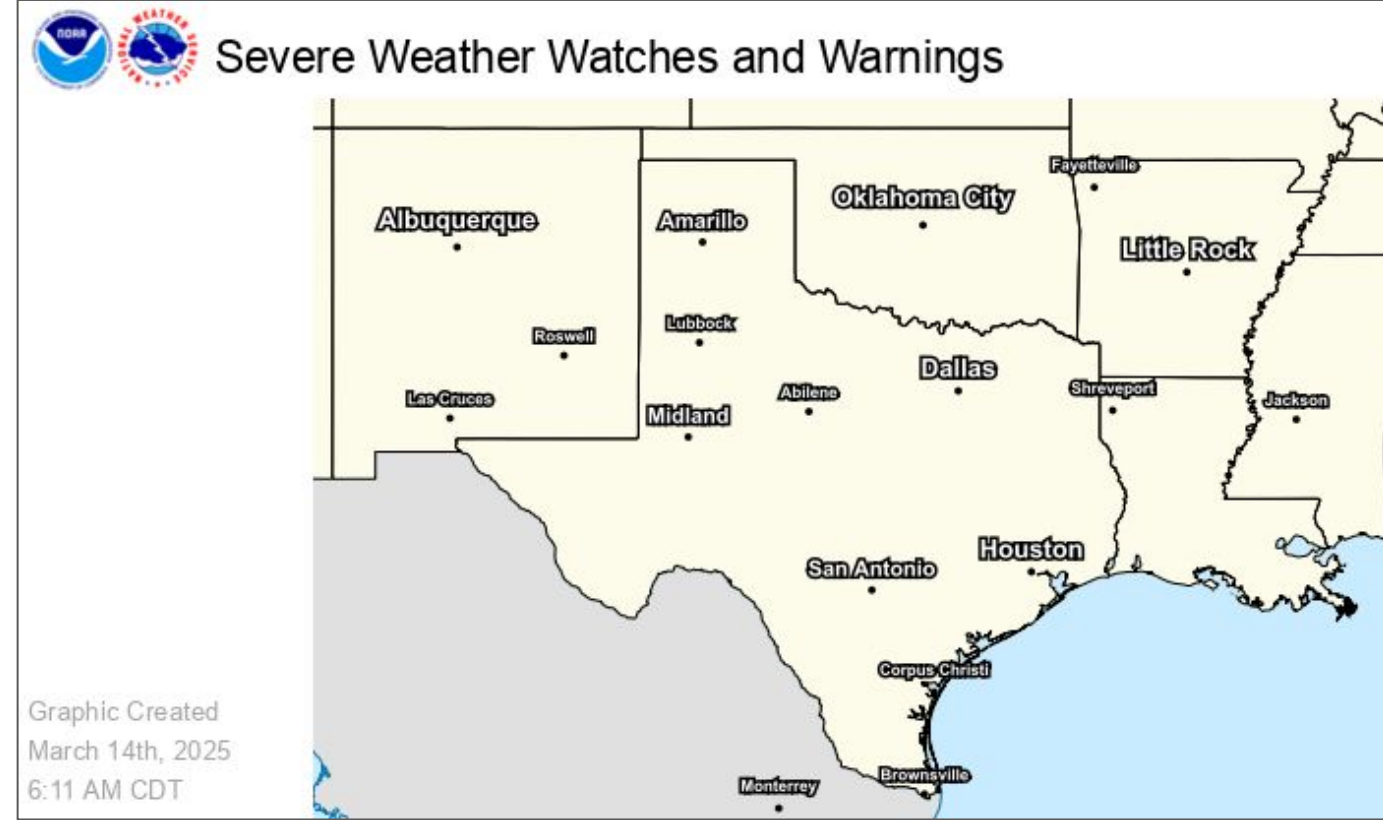
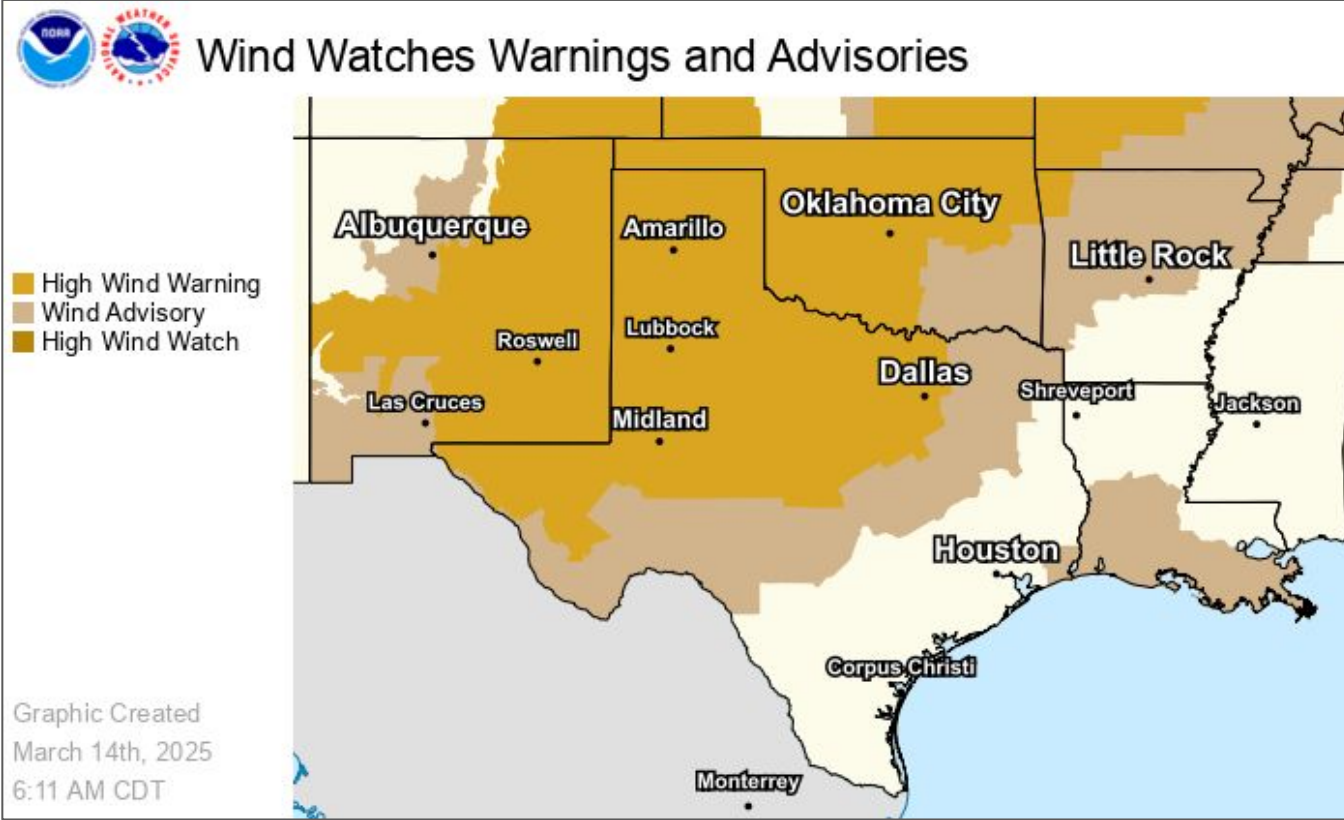
Fire Weather Outlooks





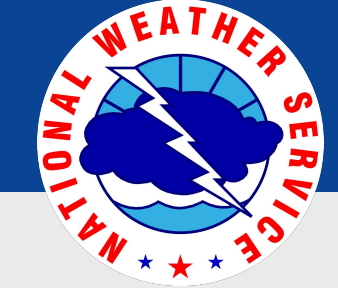
Watches, Warnings, and Advisories

Wind, Severe, Winter, and Flood Hazards



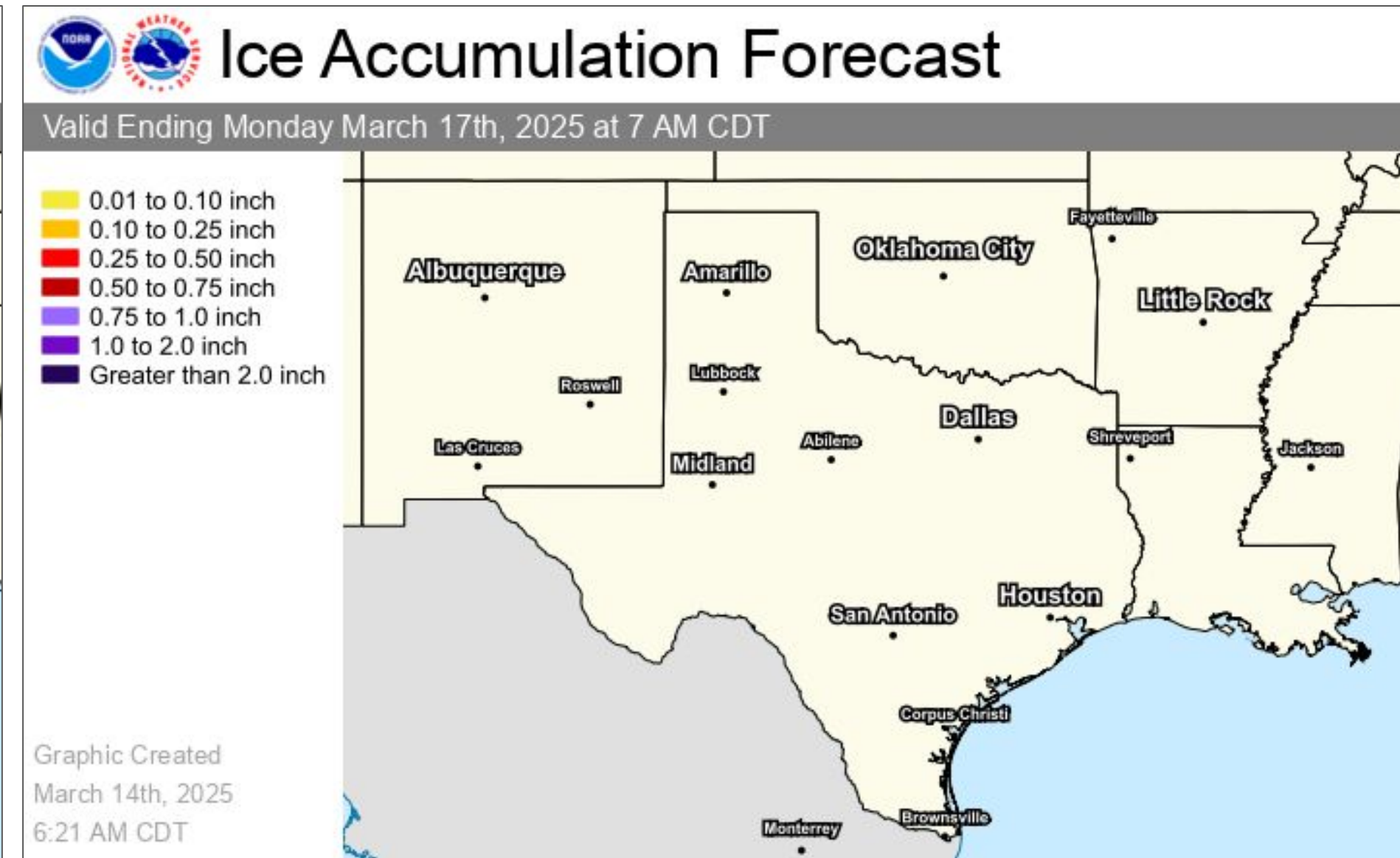
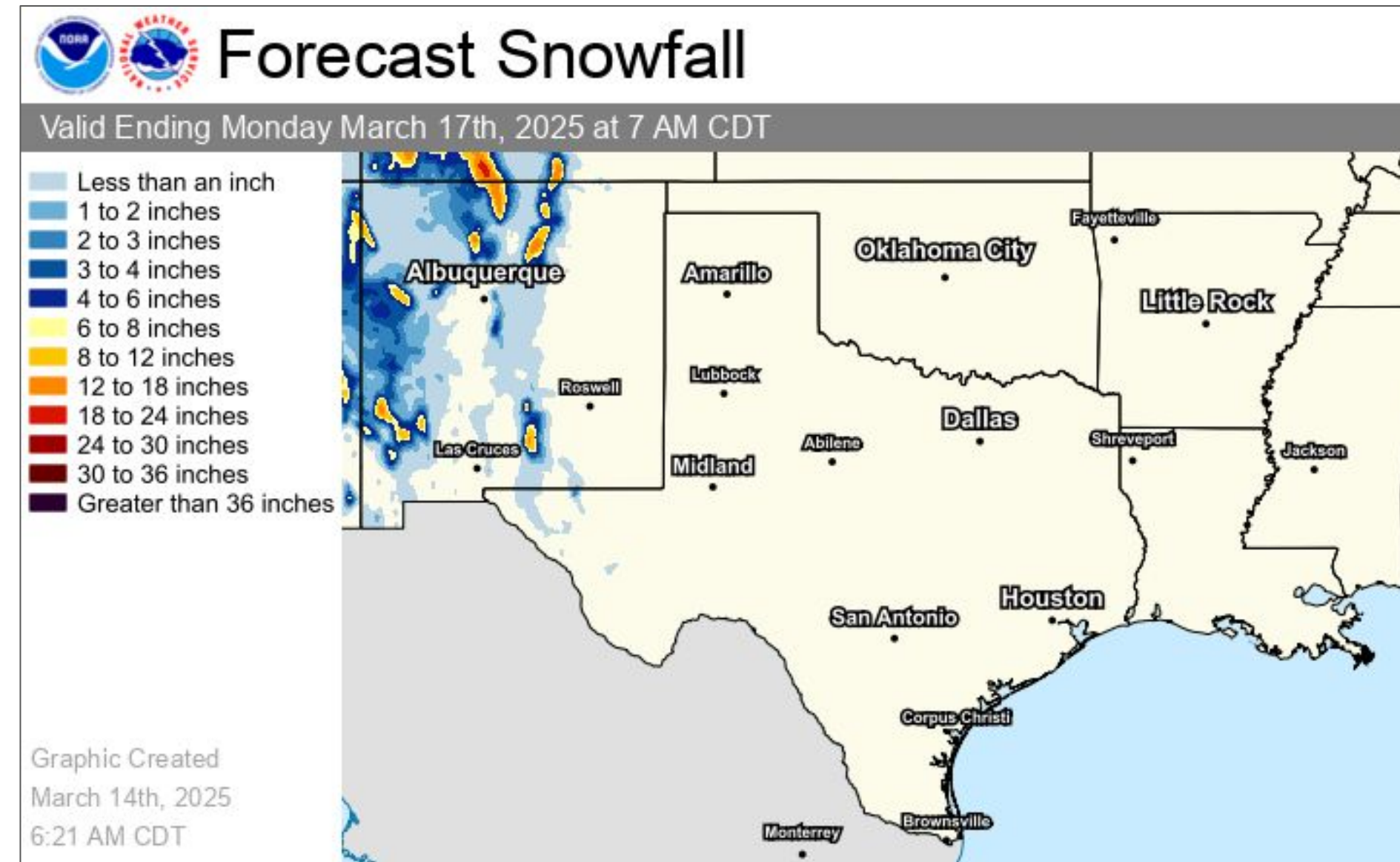
High wind warnings and wind advisories in NM, N TX, OK today for gusts to 80 mph producing power outages and blowing dust.

Winter storm warnings and advisories in W/N NM through 6pm for snow and blizzard like conditions.



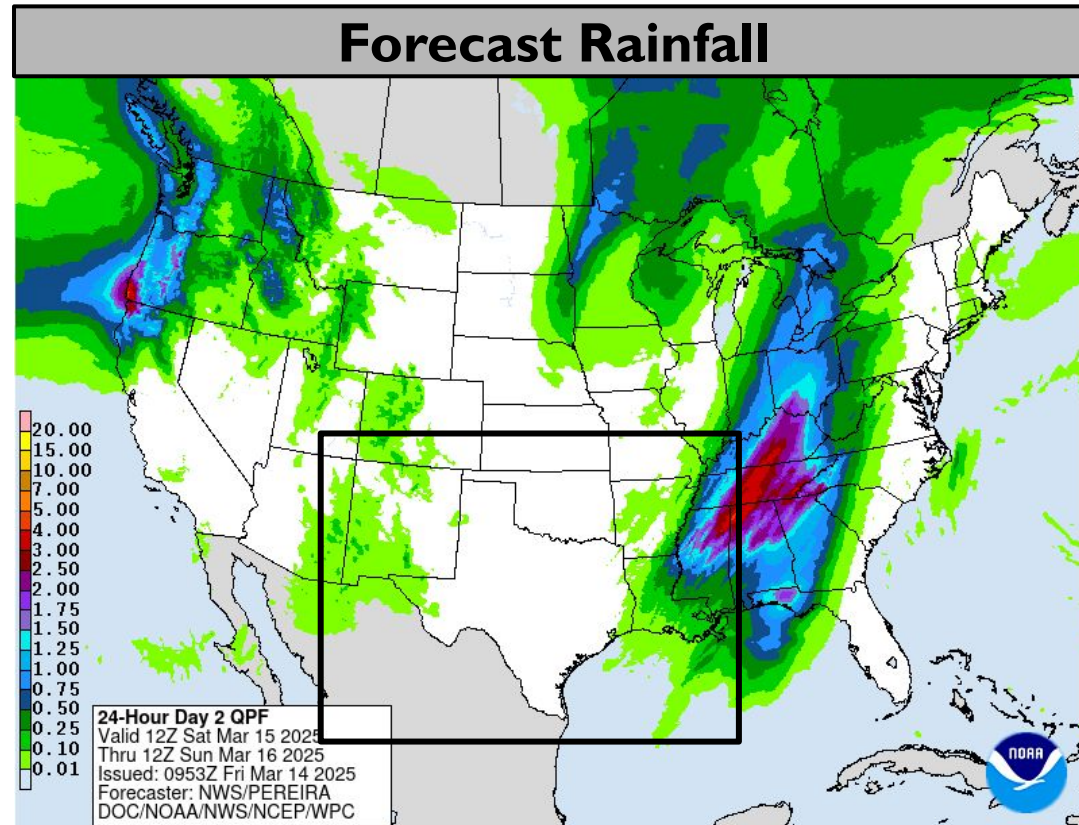
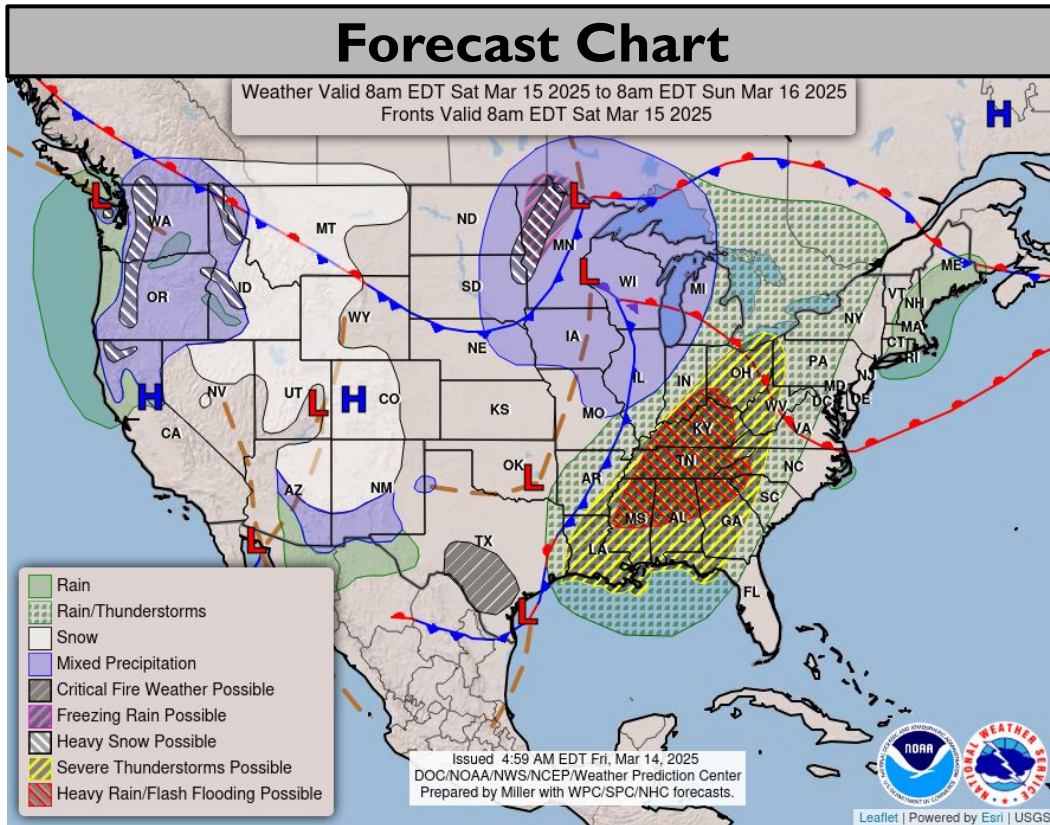
Winter Weather

Through the next 3 days



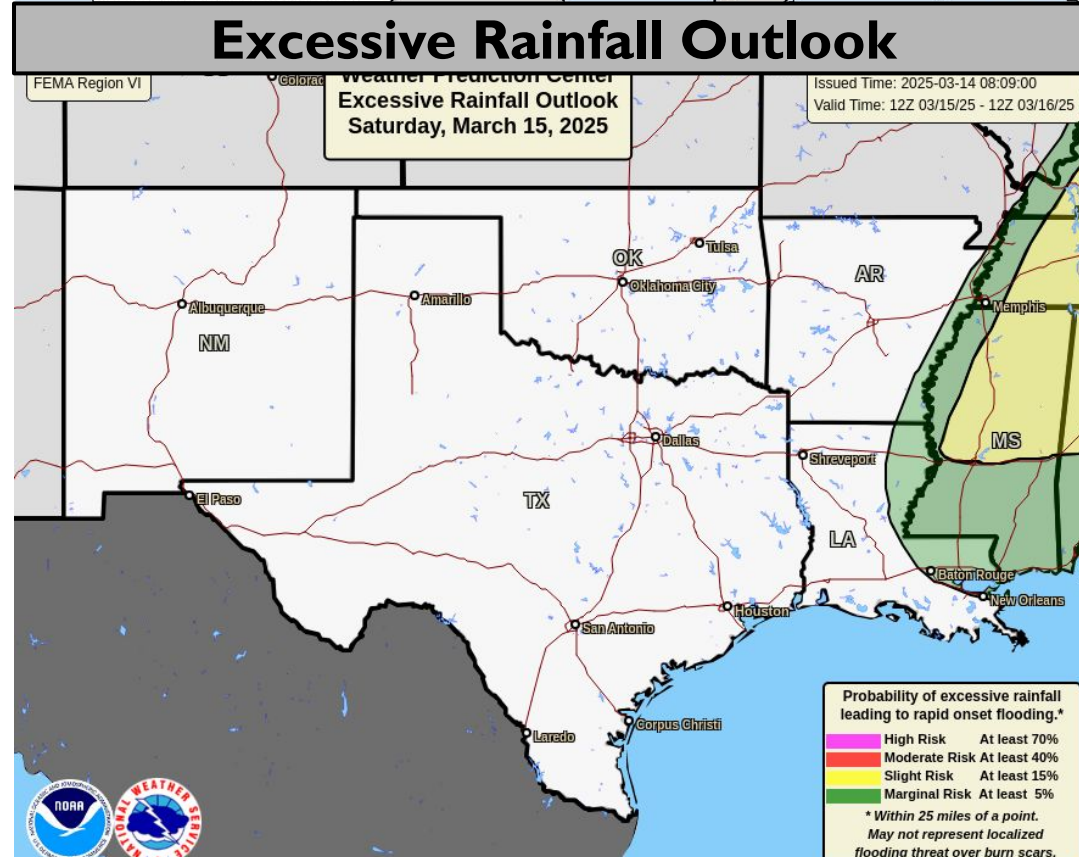
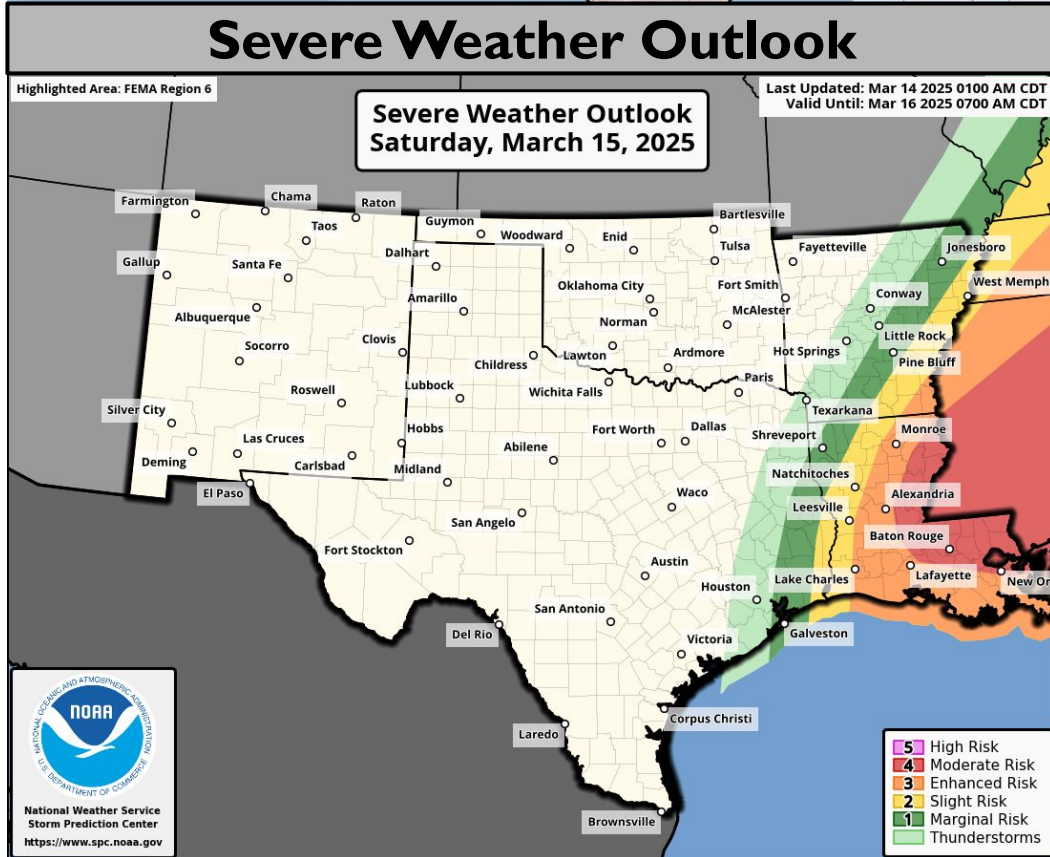


Tomorrow's Weather

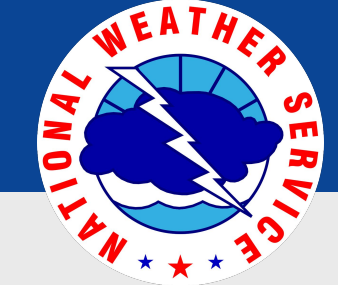


Enhanced to moderate risk (levels 3-4 of 5) of severe storms in E LA and SE AR. Timing: Afternoon - evening.

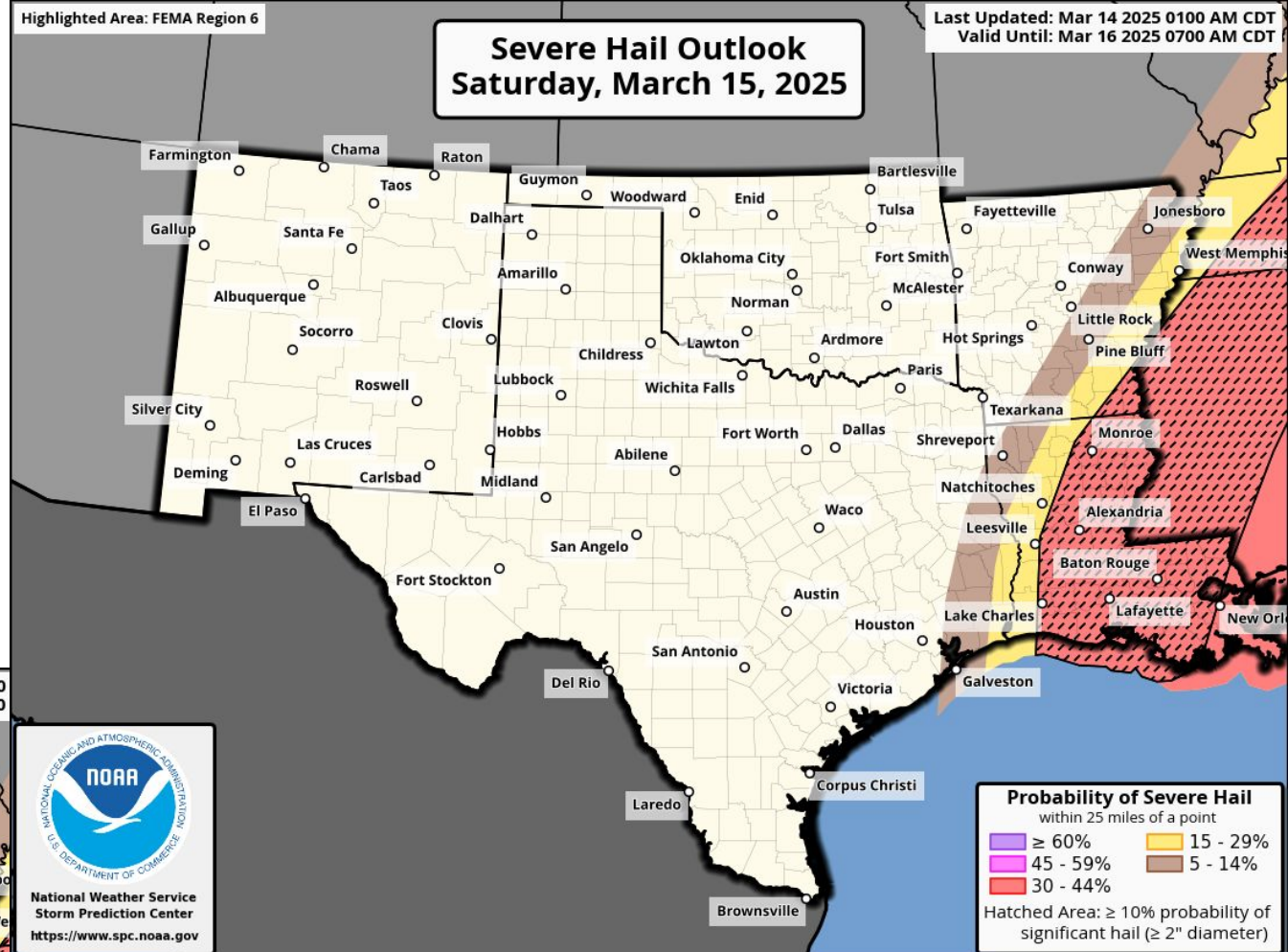
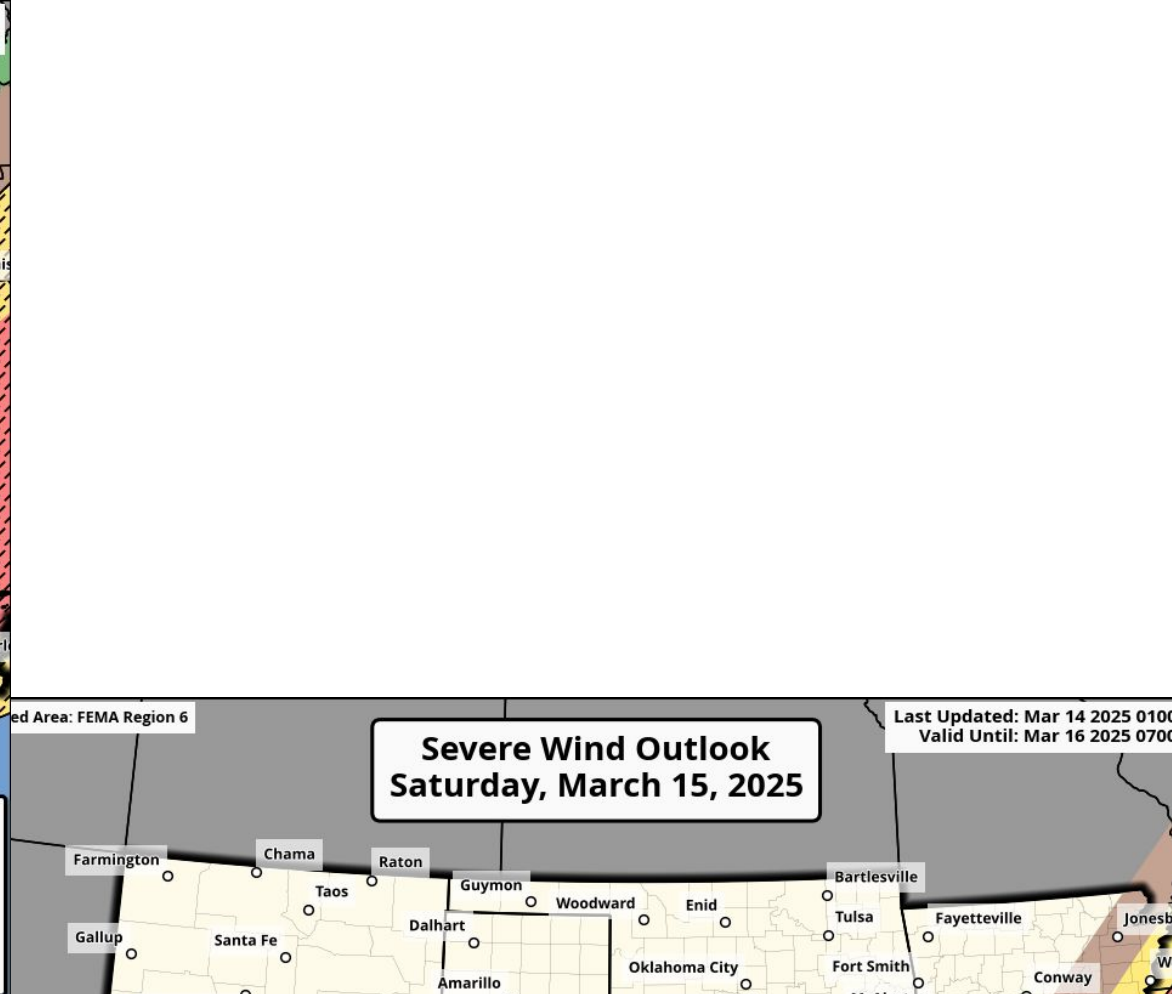
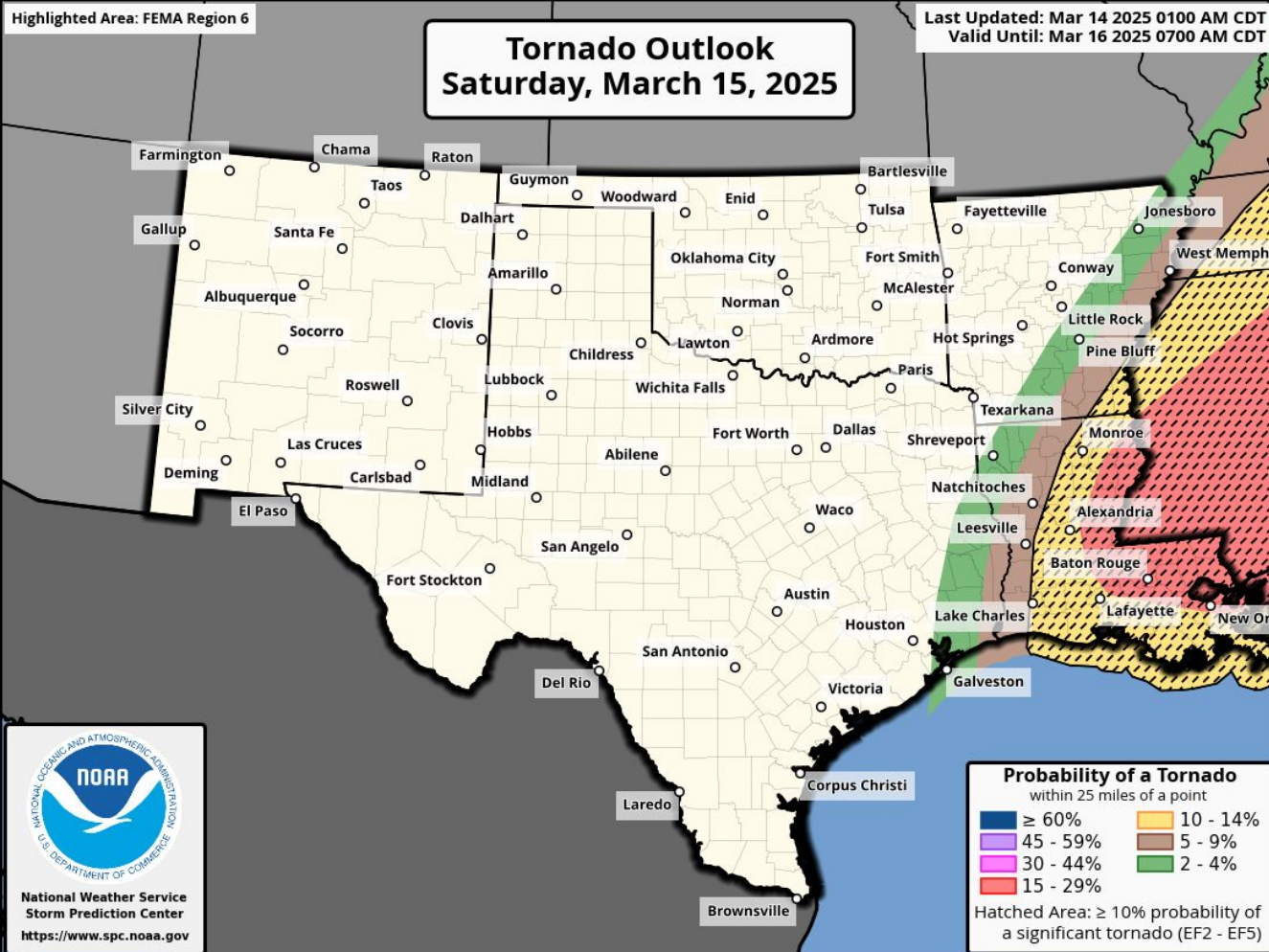
Elevated to critical (levels 1-2 of 3) fire weather concerns E NM, W/C/STX.



Marginal risk (level 1 of 4) for heavy rainfall leading to flash flooding in E LA.

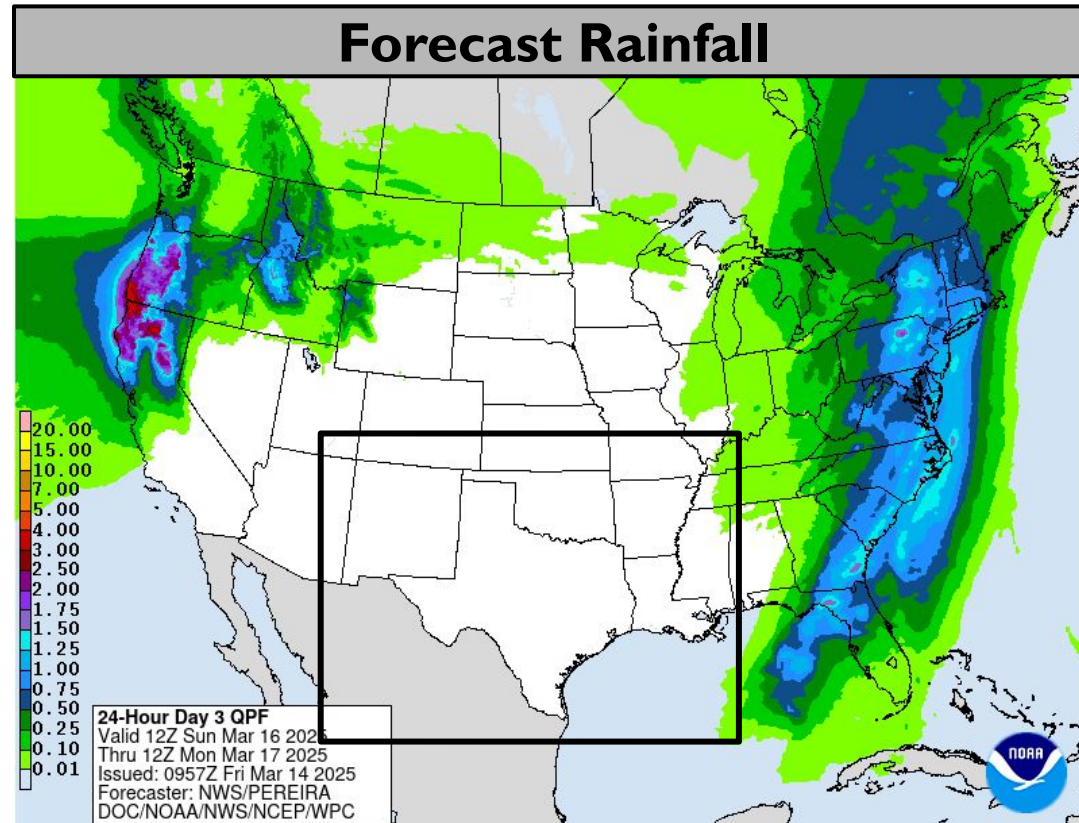
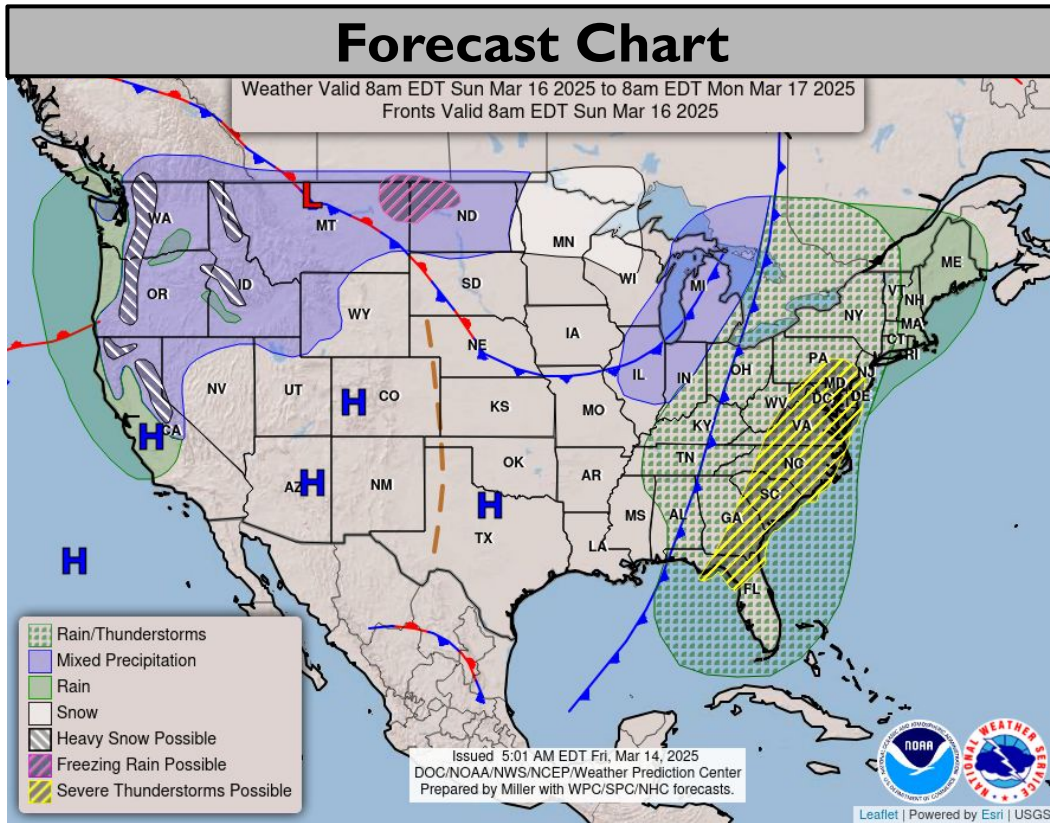


Tomorrow's Tornado & Severe Wind / Hail Probabilities

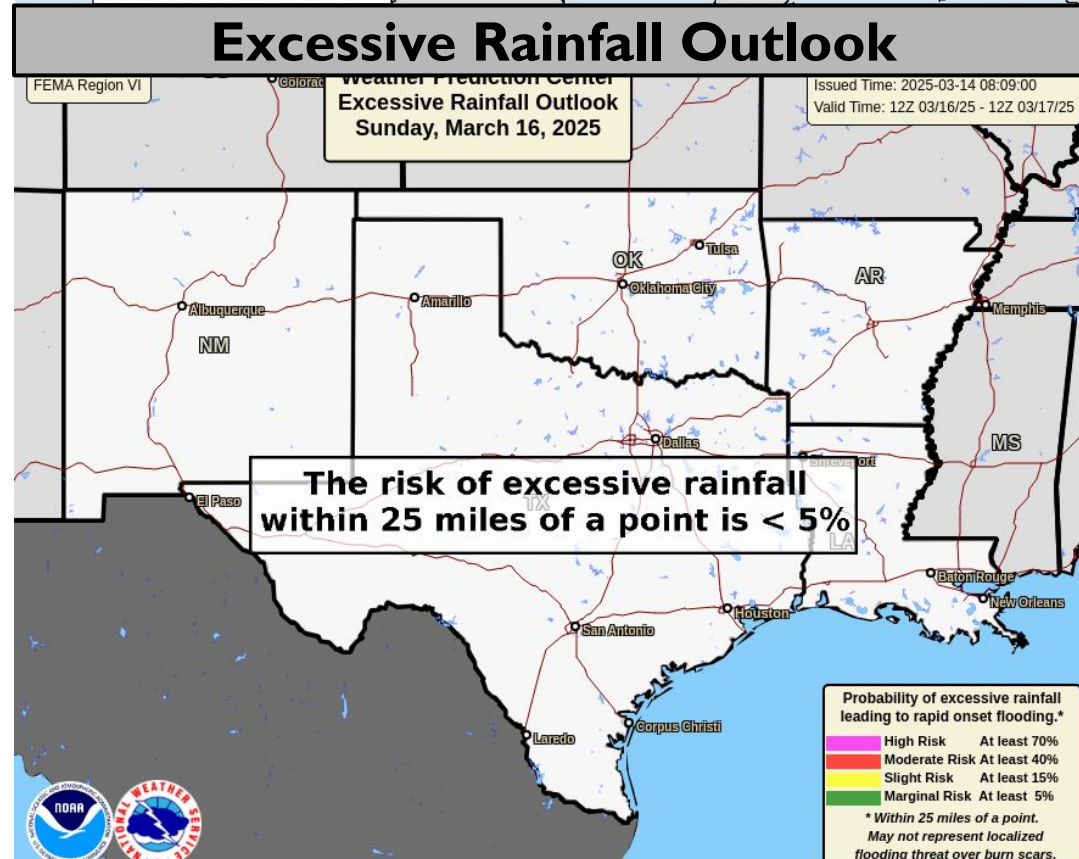
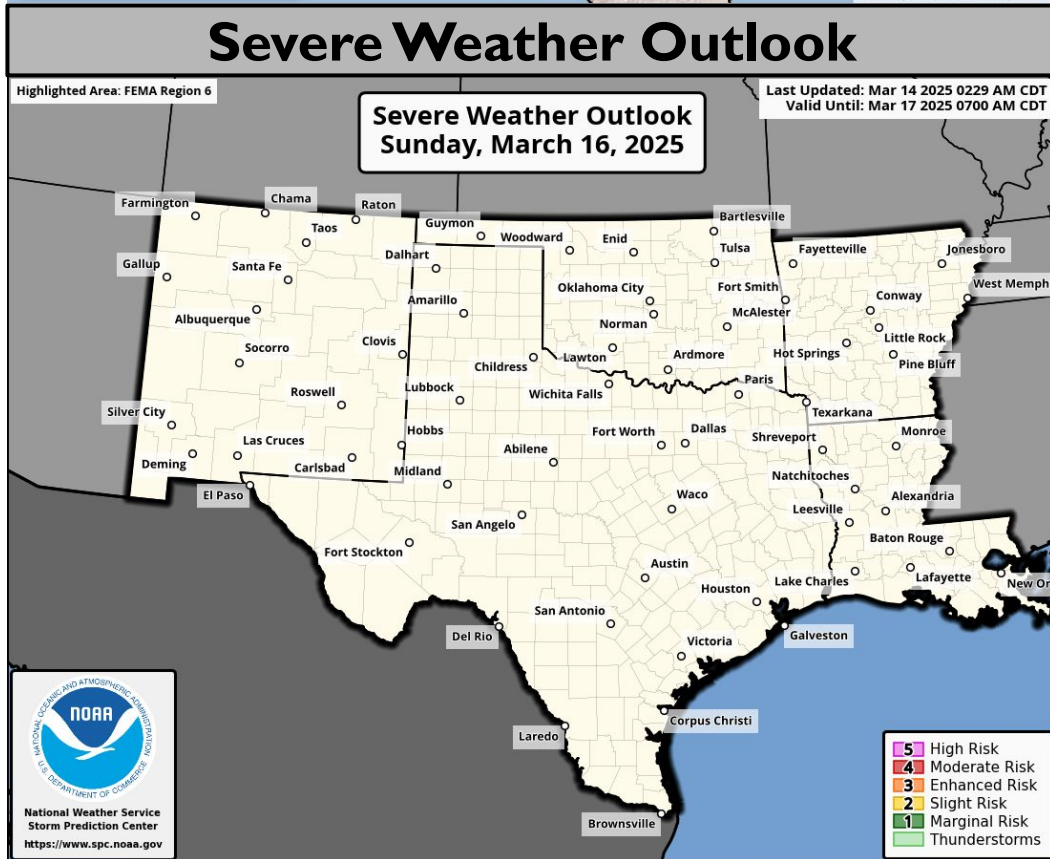




Sunday's Weather



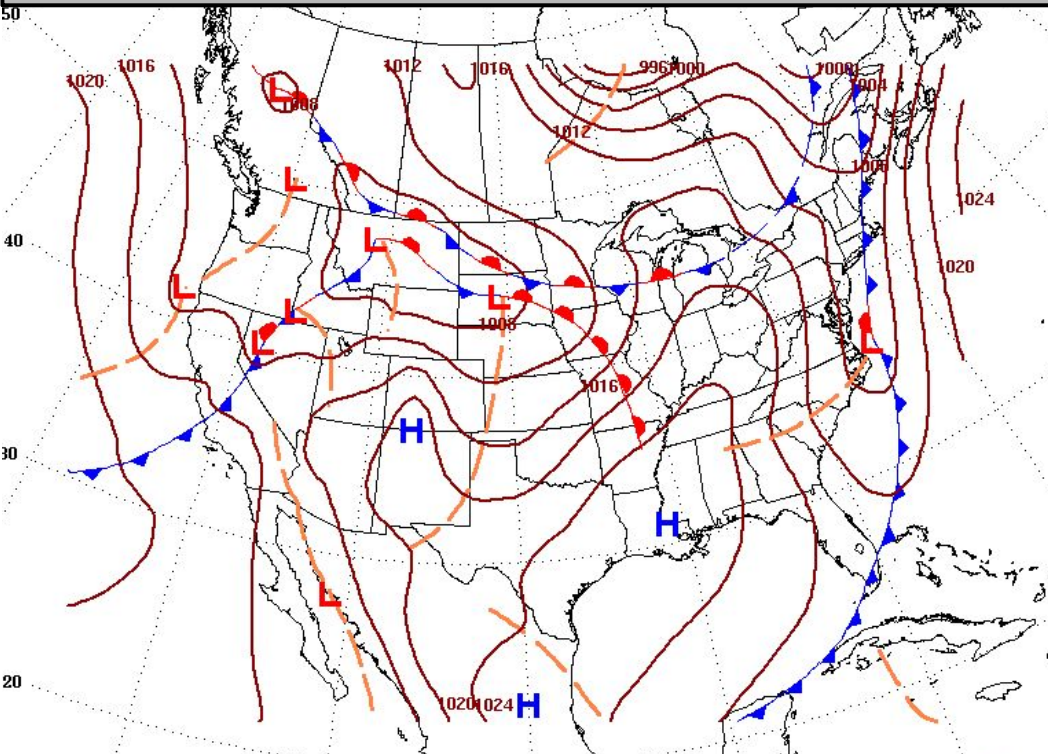
Elevated (level 1 of 3) fire weather conditions in STX.



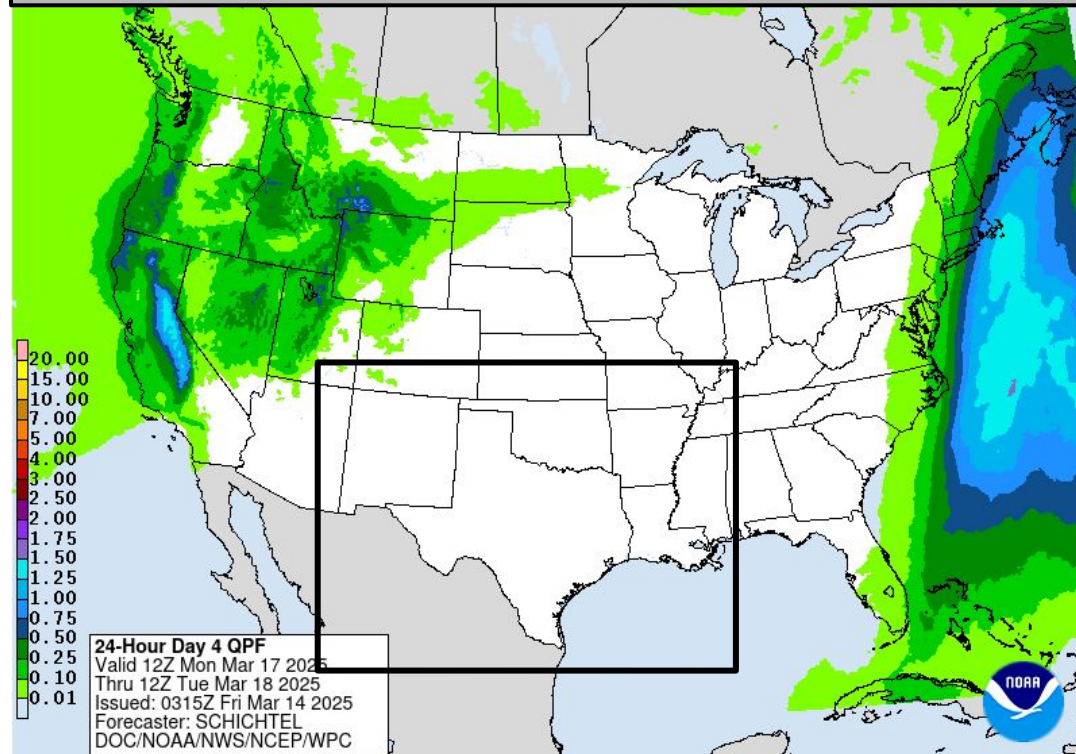


Monday's Weather

Forecast Chart

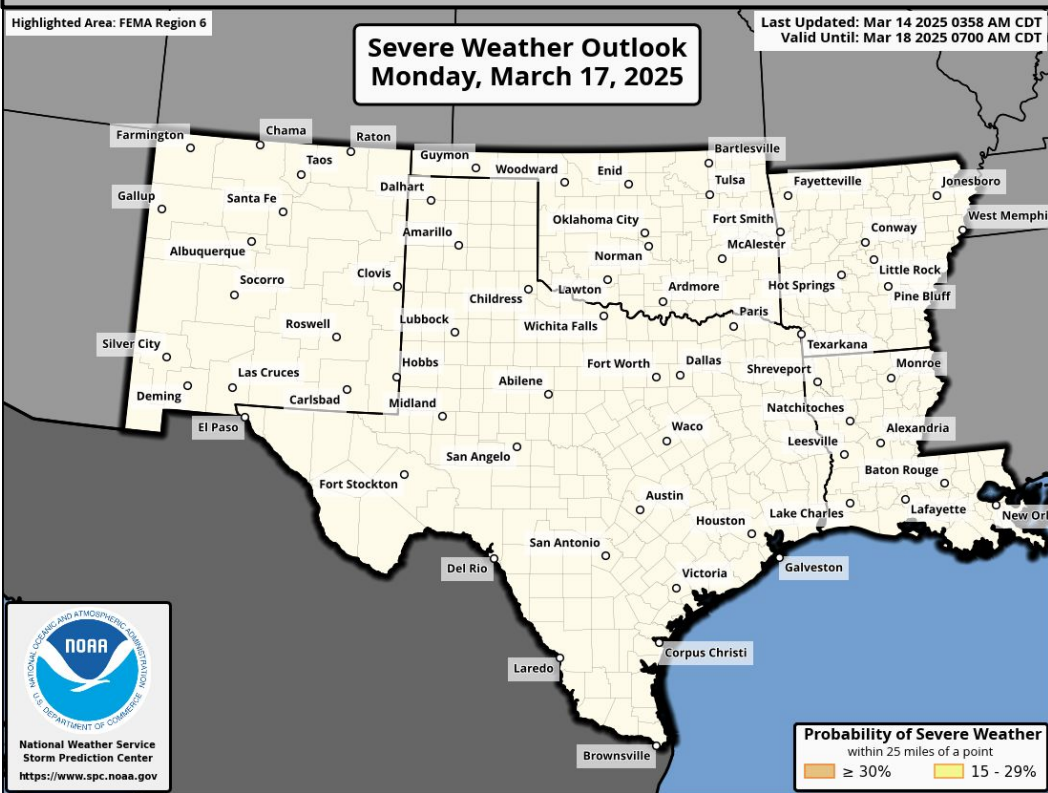


Forecast Rainfall

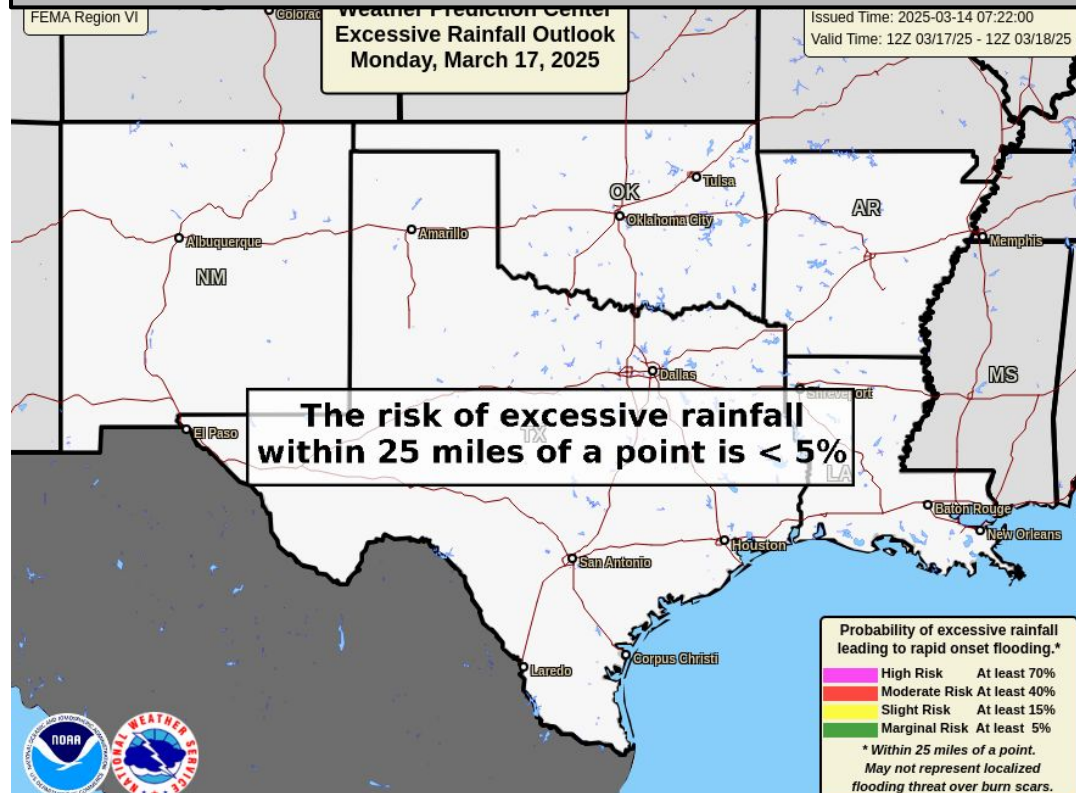


Critical (level 2 of 3) fire weather conditions in SW TX.

Severe Weather Outlook



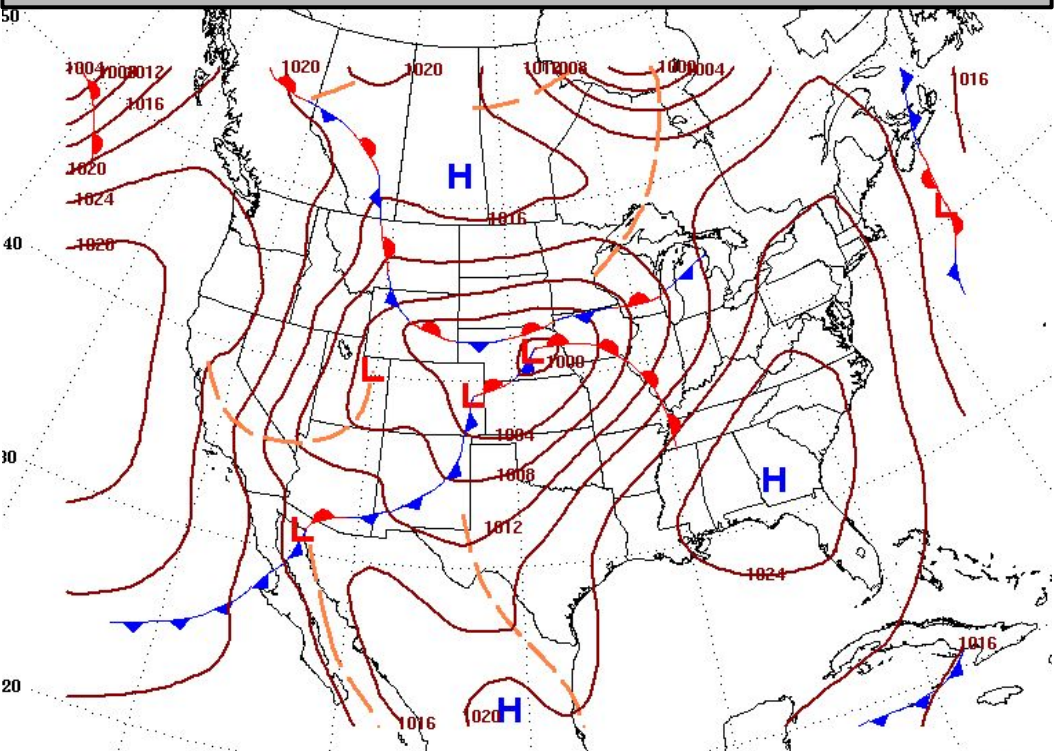
Excessive Rainfall Outlook



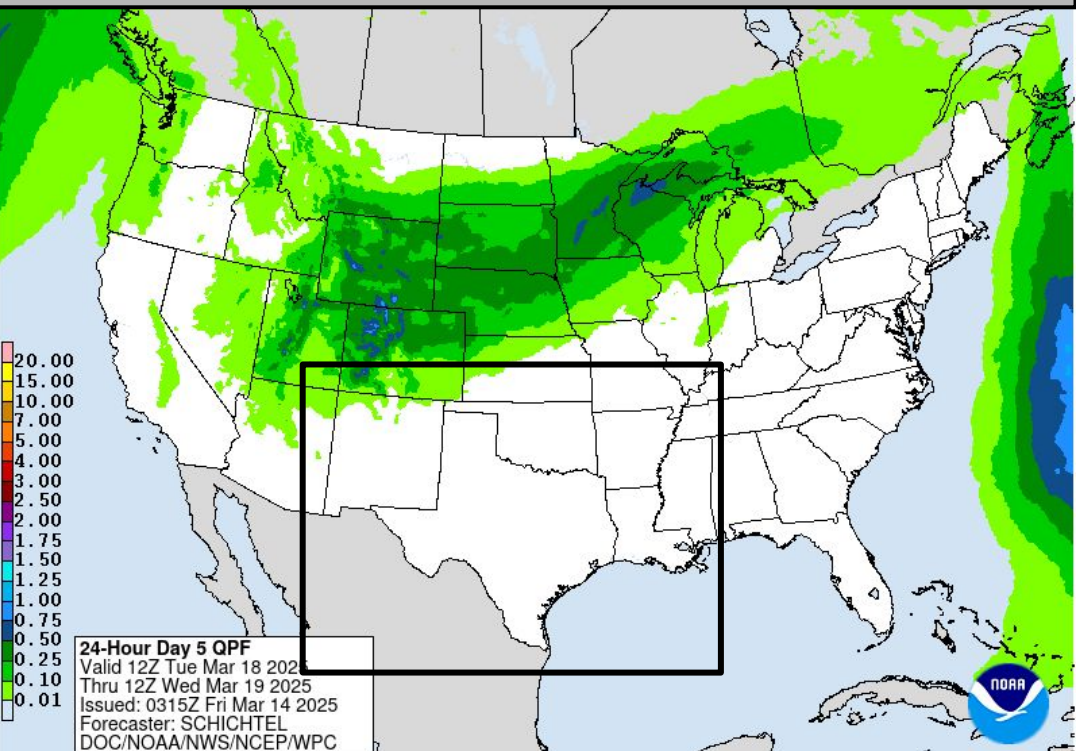


Tuesday's Weather

Forecast Chart

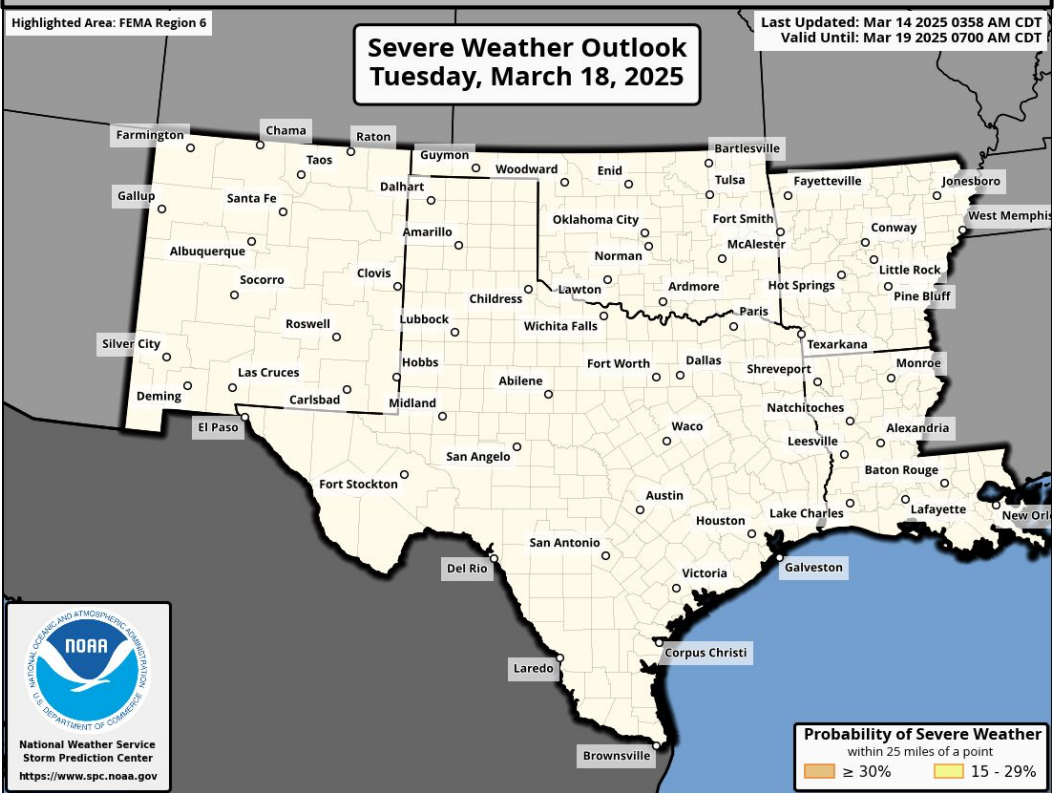


Forecast Rainfall



Critical (level 2 of 3) fire weather conditions in SE NM, W TX, TX Panhandle.

Severe Weather Outlook



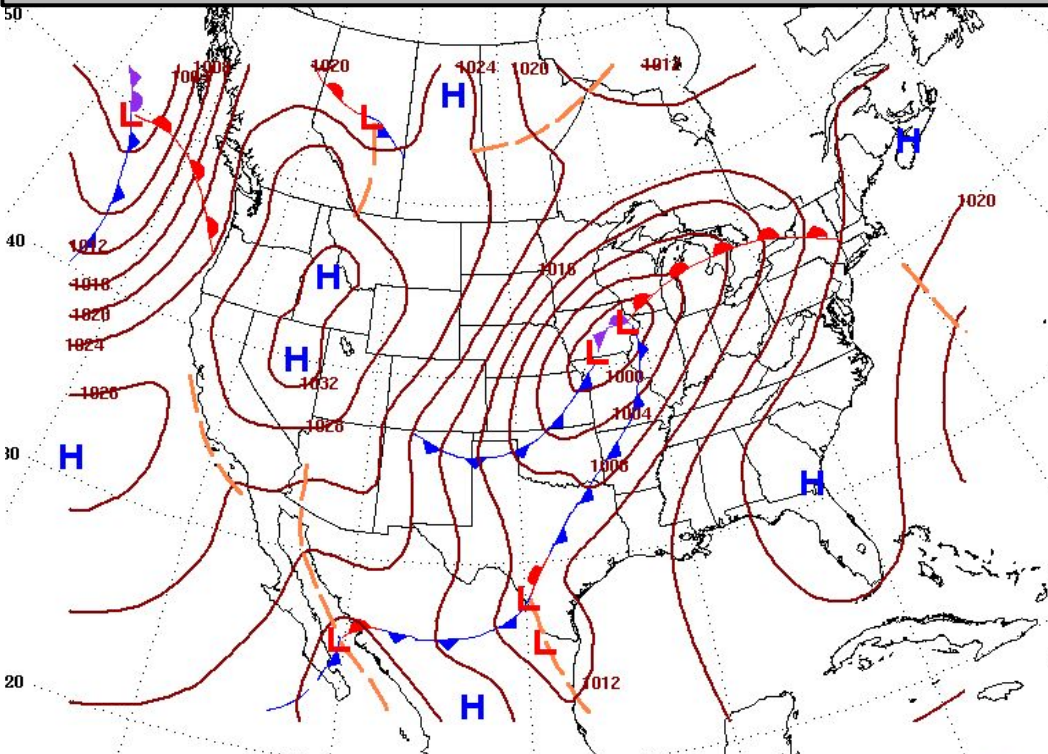
Excessive Rainfall Outlook



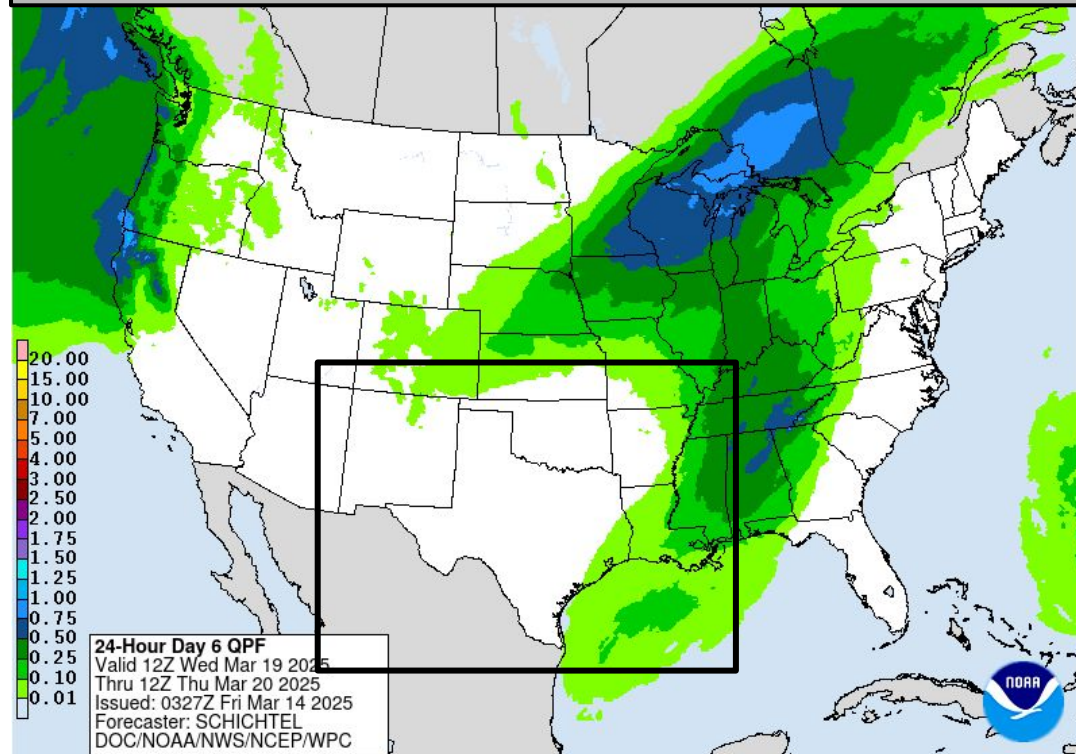


Wednesday's Weather

Forecast Chart

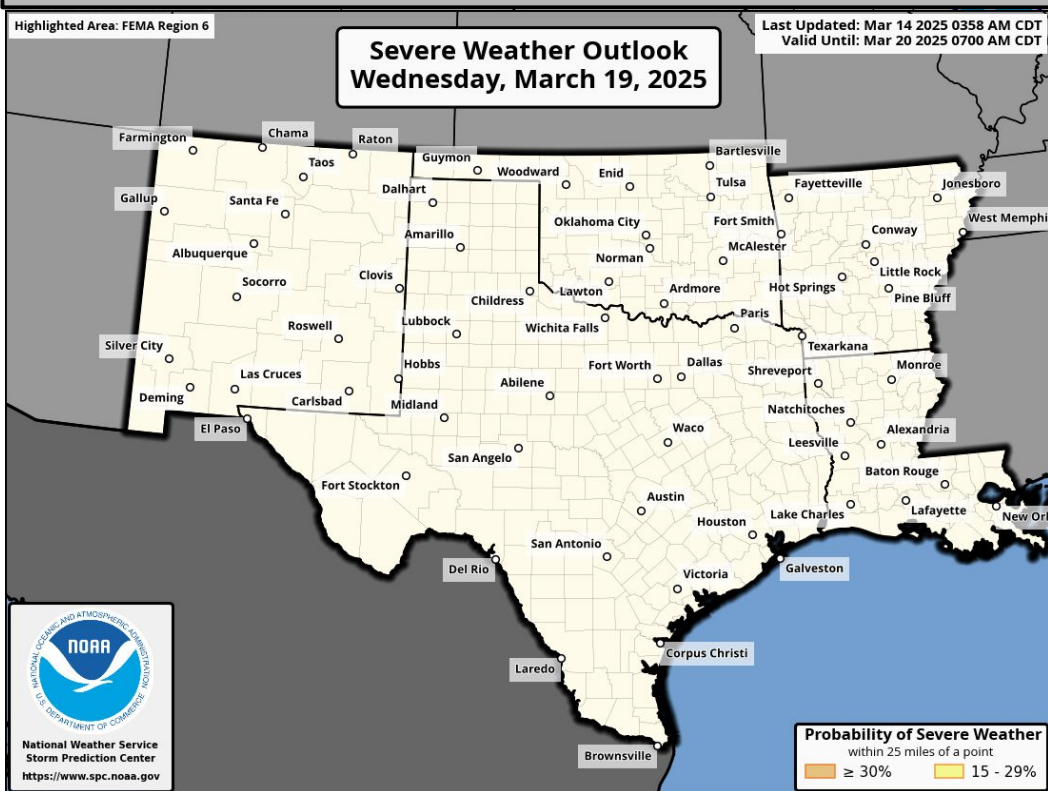


Forecast Rainfall



Elevated (level 1 of 3) fire weather conditions in SE NM, W/SW TX.

Severe Weather Outlook

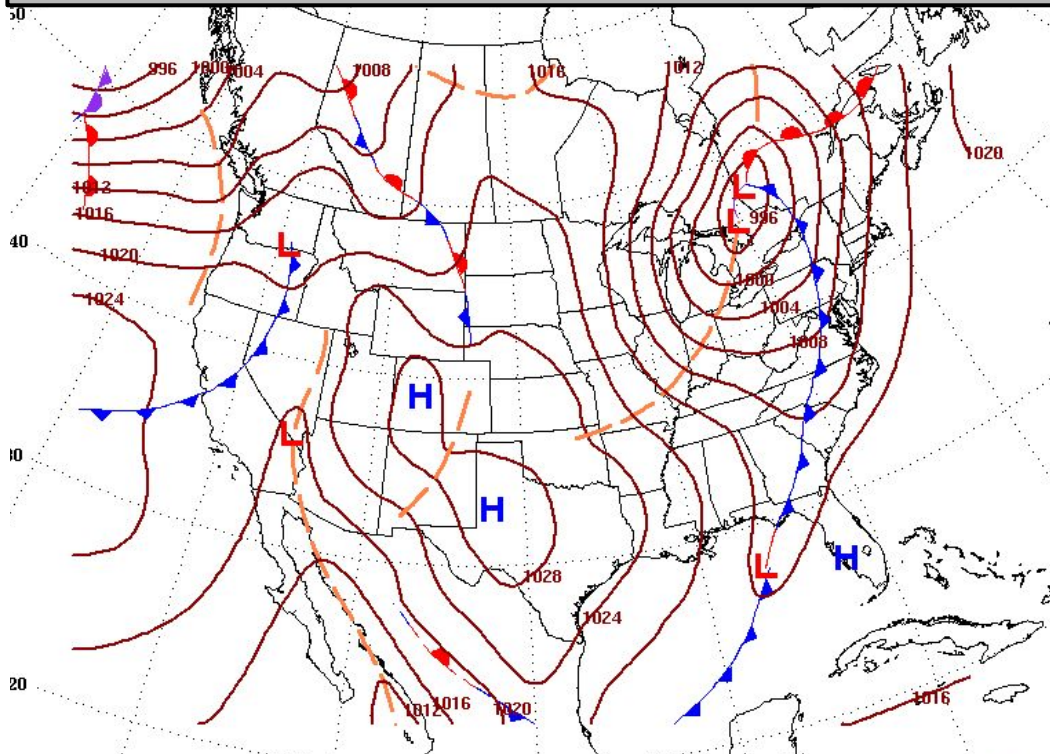


Excessive Rainfall Outlooks not available beyond Day 5

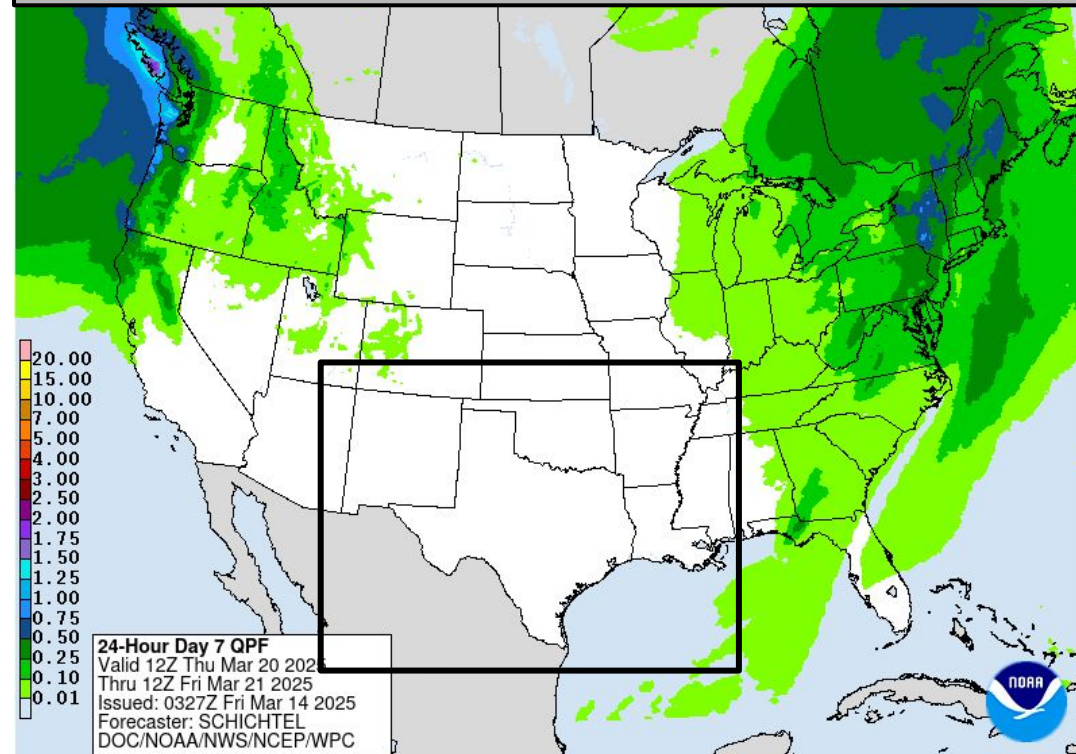


Thursday's Weather

Forecast Chart

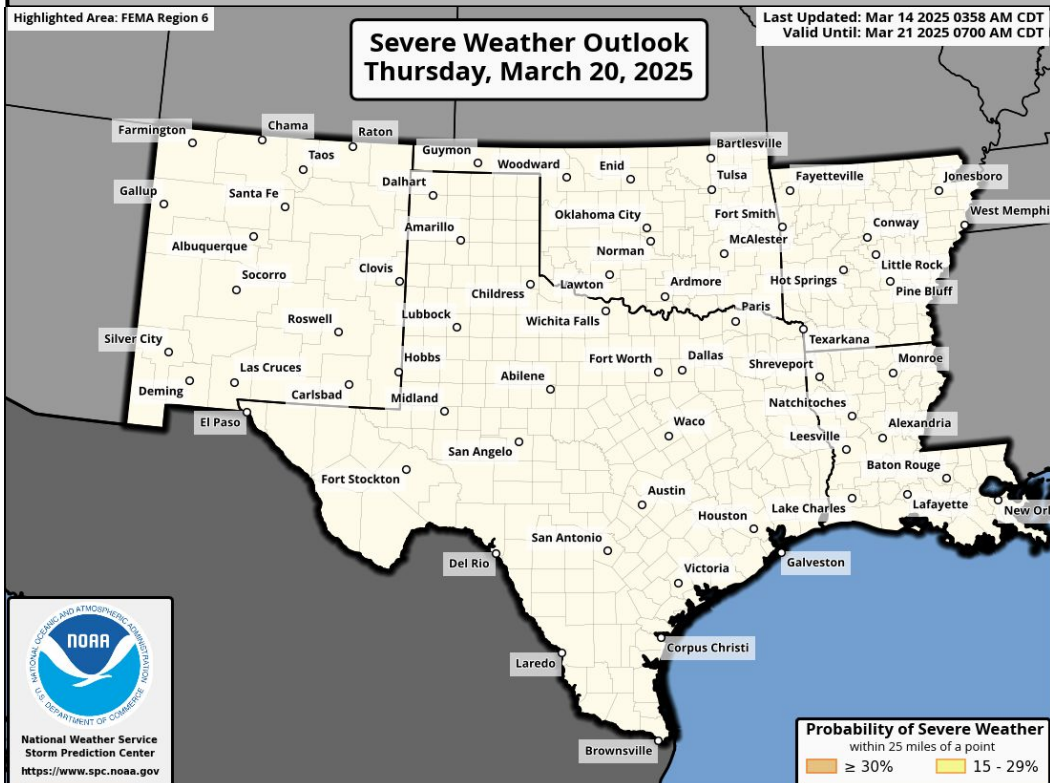


Forecast Rainfall



No significant weather expected.

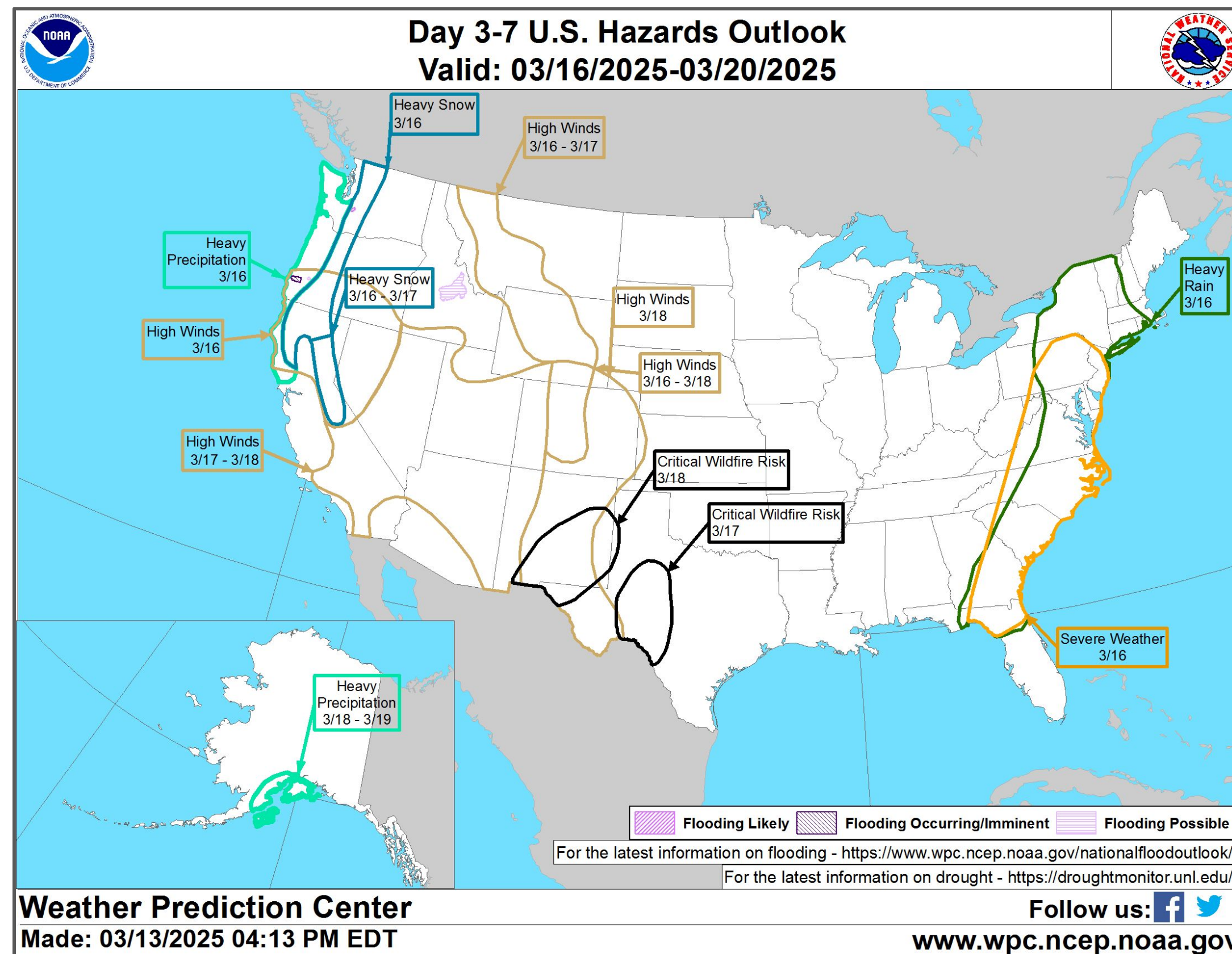
Severe Weather Outlook



Excessive Rainfall Outlooks not available beyond Day 5



“Day 3-7” Hazards Outlook



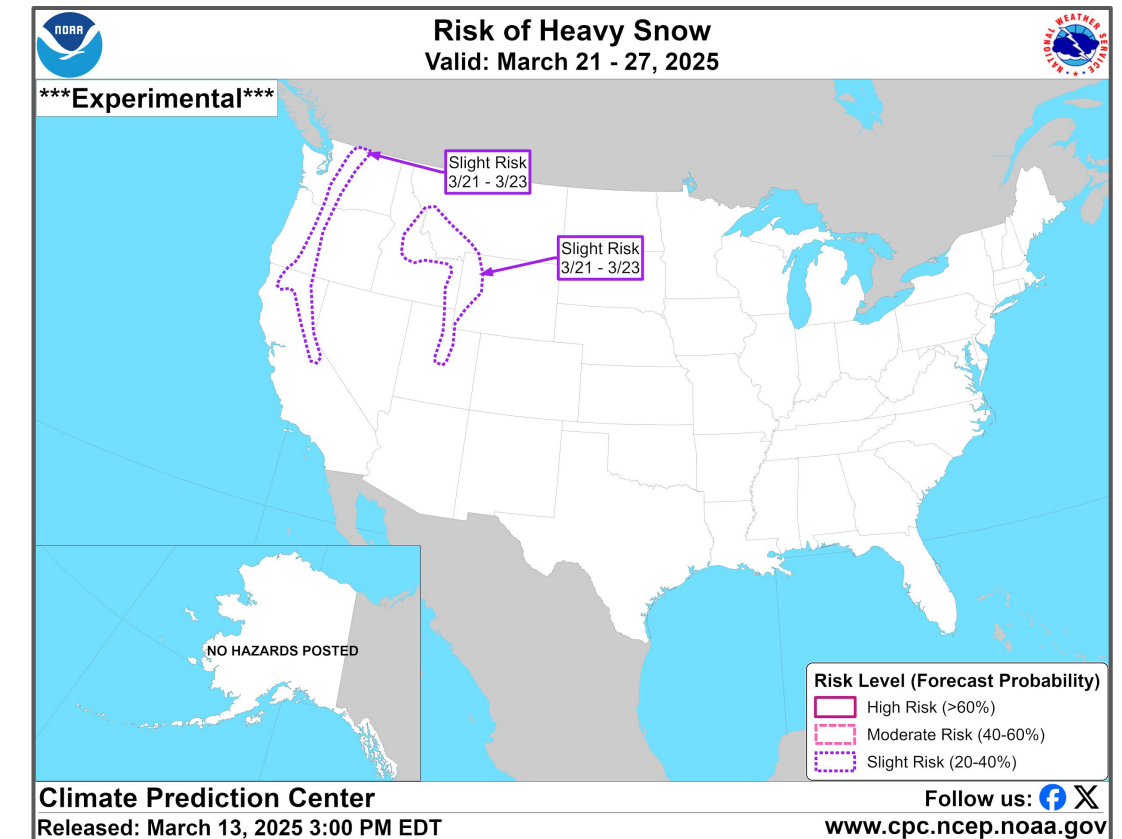
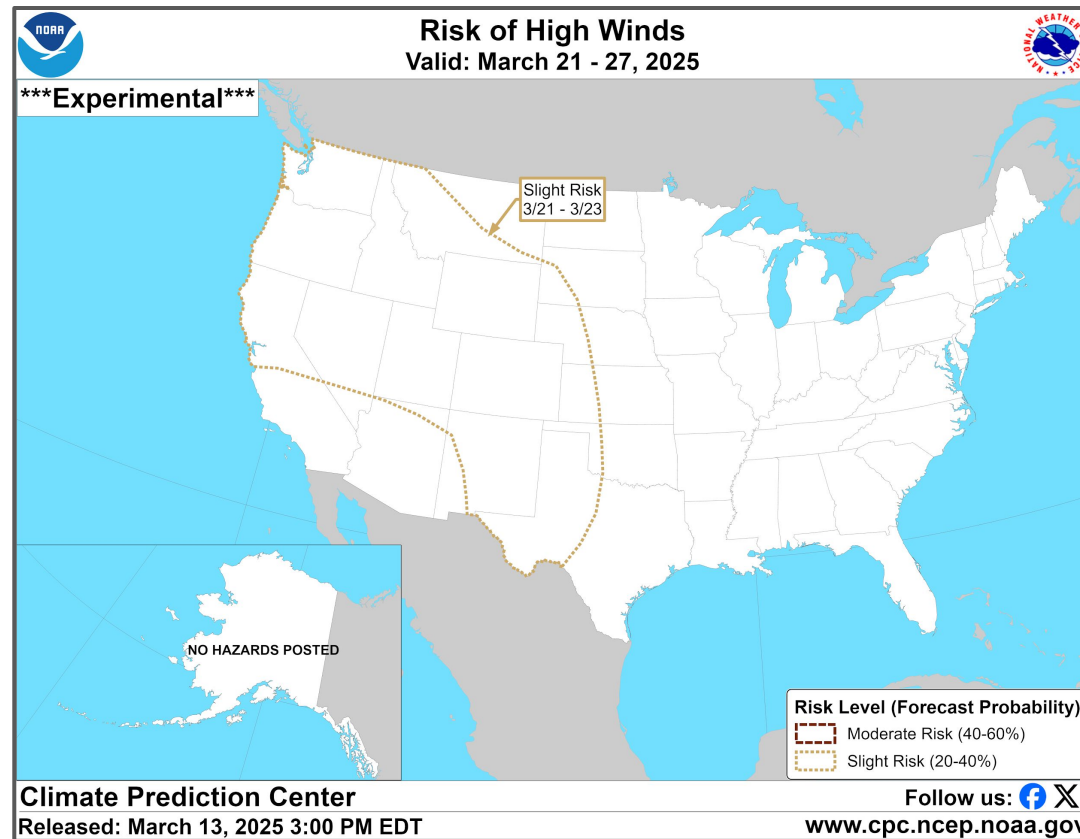
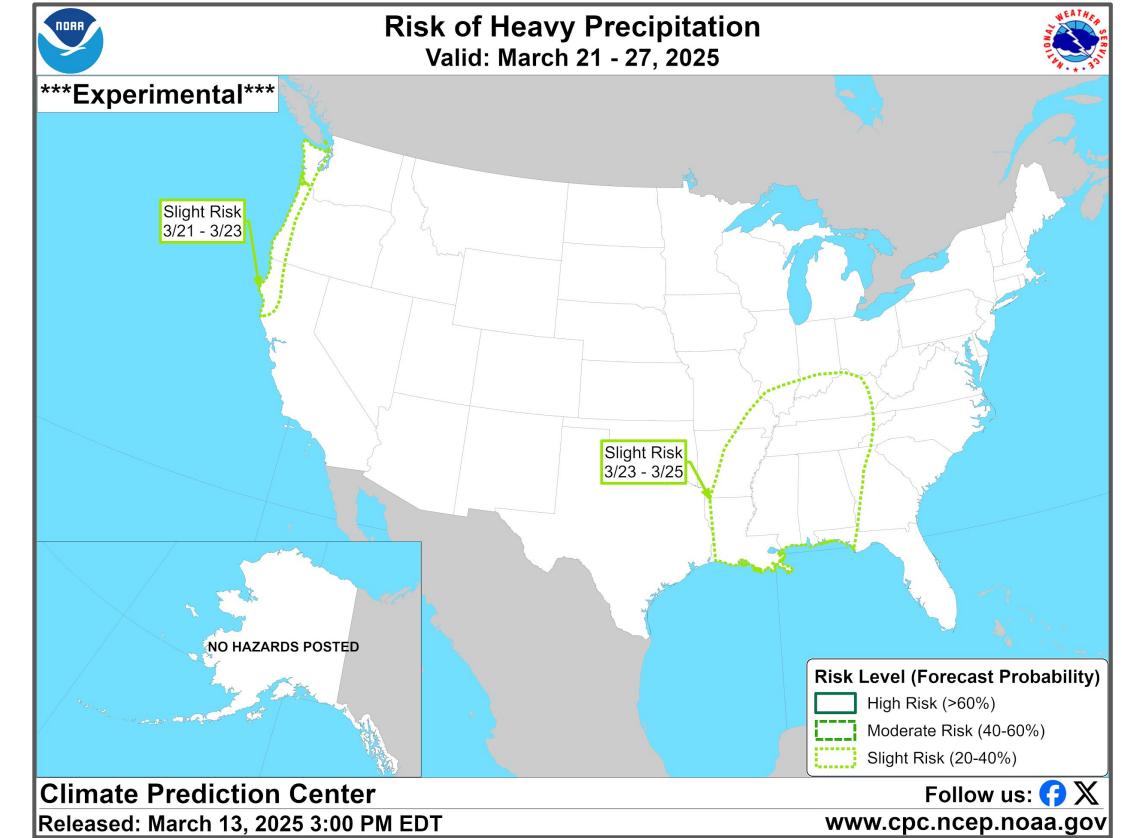
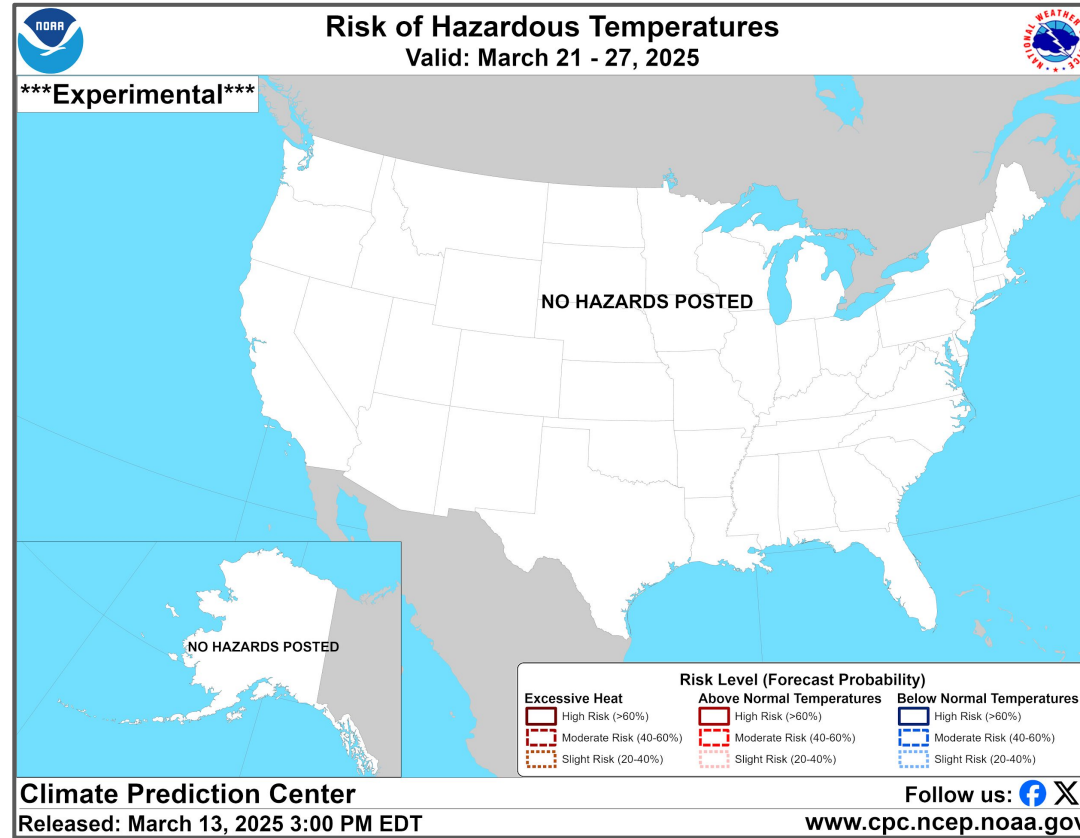
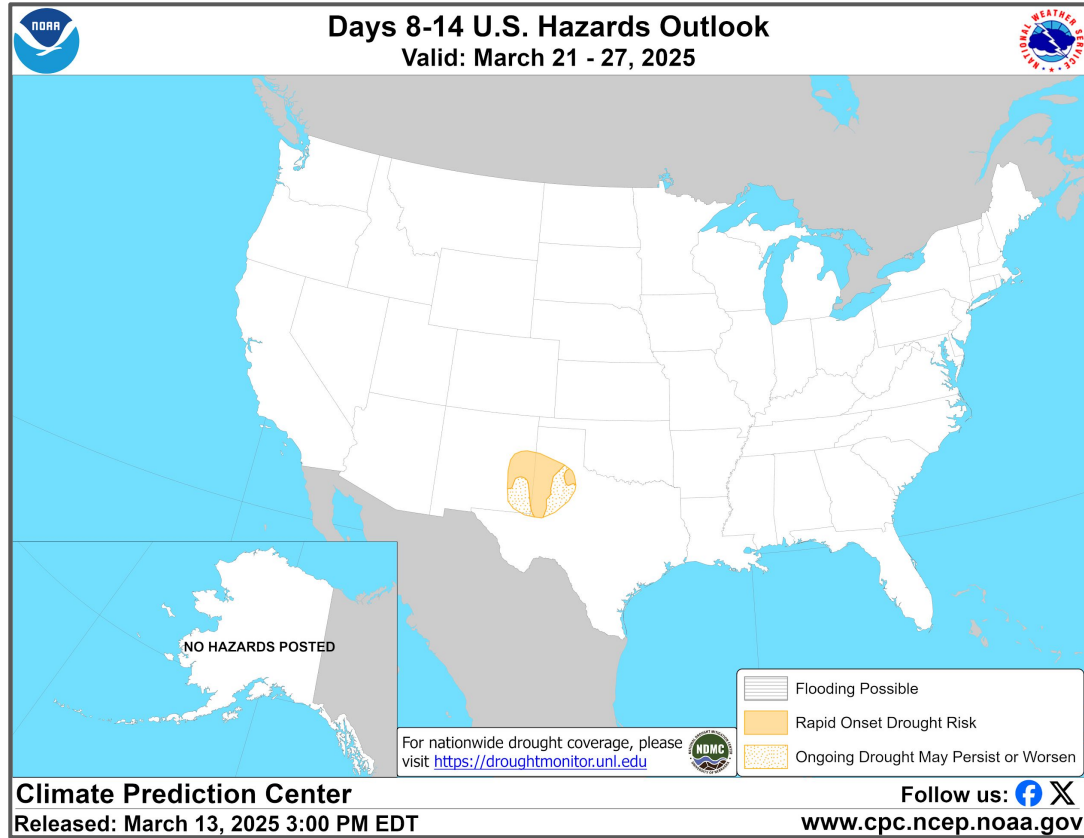
NOTE: These outlooks are issued in the afternoon and only issued on weekdays. Because of that and the fact that these slides are issued in the mornings:

1. The “day 3-7” will really be days 2-6
2. This slide will be hidden on Mondays and Sundays so the data/information is not too old

For additional information on this outlook go to <https://www.wpc.ncep.noaa.gov/threats/threats.php>



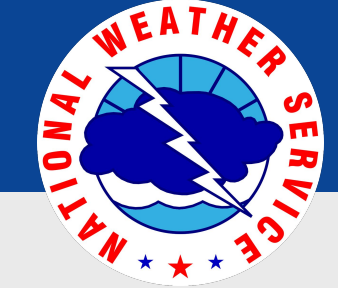
“Day 8-14” Hazards Outlook



NOTE: These outlooks are issued in the afternoon and only issued on weekdays. Because of that and the fact that these slides are issued in the mornings:

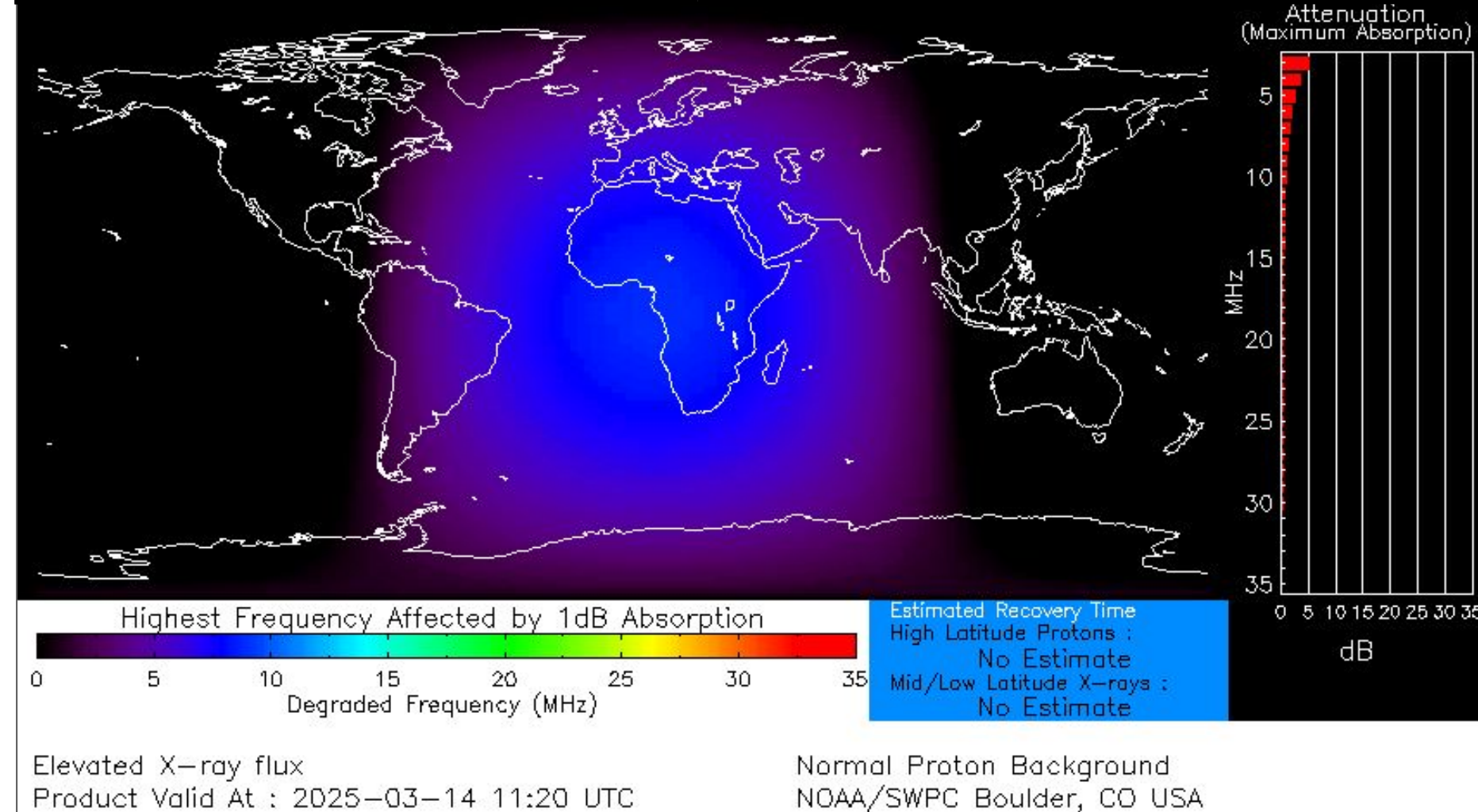
1. The “day 8-14” will really be days 7-13
2. This slide will be hidden on Mondays and Sundays so the data/information is not too old

For additional information on this outlook go to <https://www.cpc.ncep.noaa.gov/products/predictions/threats/threats.php>



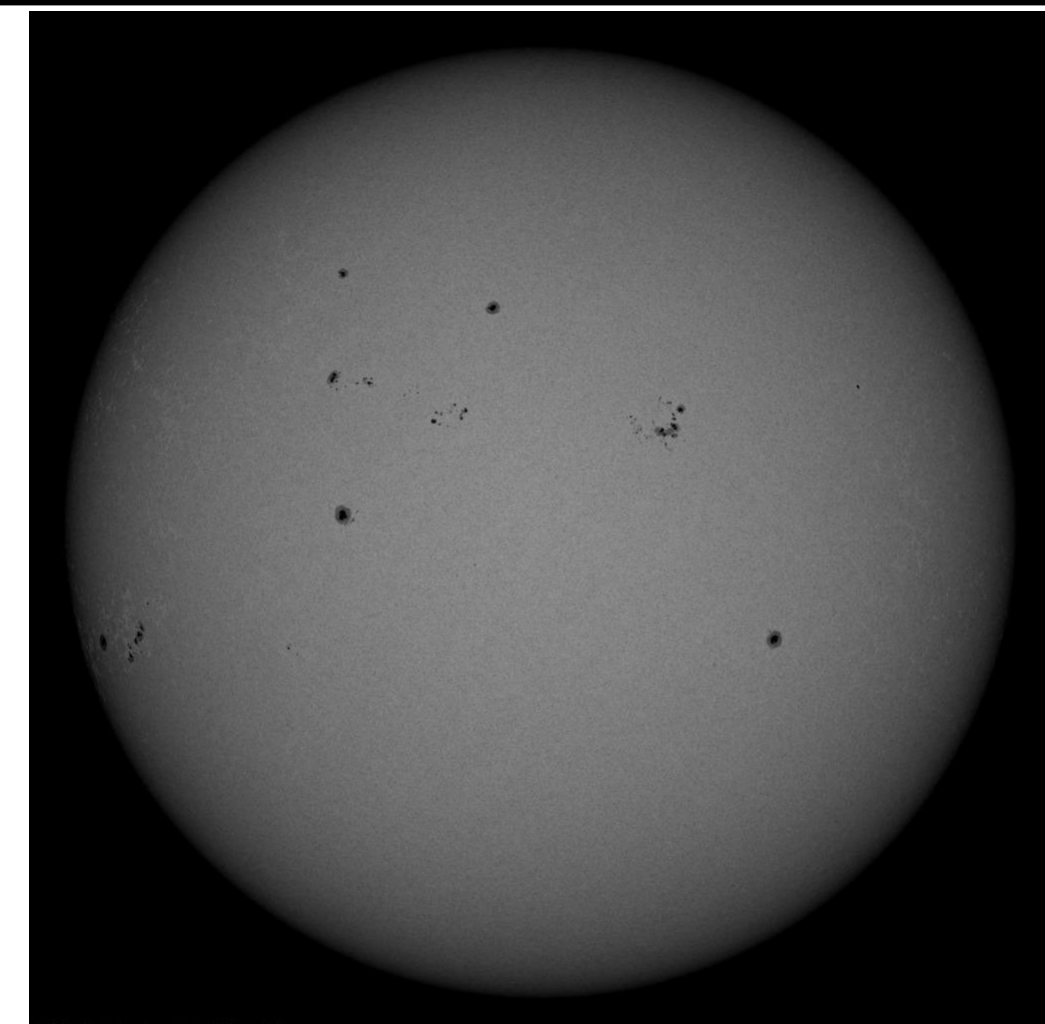
Space Weather 3-Day Forecast

	Friday, Mar 14	Saturday, Mar 15	Sunday, Mar 16
Geomagnetic Storms	Active (Max Kp = 4)	Active (Max Kp = 4)	Unsettled (Max Kp = 3)
Solar Radiation Storm (S1-S5)	1%	1%	1%
Radio Blackout (R1-R2)	45%	45%	45%
Radio Blackout (R3-R5)	5%	5%	5%



[Description of the Space Weather Storm Scales](#)

[Latest 3-Day Space Weather Forecast](#)



Weather "Threat" Matrix for FEMA Region VI

Color	Definition	Criteria	Example(s)
Green	<p style="text-align: center;">Little to None</p> <p>Safety: Rarely a Direct Threat to Life and Property Impact Potential: Typically Results in Little Inconvenience to Daily Routines</p>	Severe: Marginal Risk from SPC Flooding: Minor flooding expected over localized areas Tropical: None Fire Weather: No Watches/Warnings, fuel moisture above 10% or green up active	<ul style="list-style-type: none"> Thunderstorms expected over LA this afternoon; a few may produce winds to knock down a few trees Something that happens almost every day in a particular season such as seabreeze storms in coastal TX
Yellow	<p style="text-align: center;">Minor</p> <p>Safety: Rarely a Direct Threat to Life and Property Impact Potential: Typically Results in Some Inconvenience to Daily Life</p>	Severe: Slight Risk from SPC Flooding: Nuisance flooded expected for a widespread area, or Minor flooding expected over isolated areas Tropical: A weak tropical wave expected to move towards or near any coastline Fire Weather: Red Flag Watches/Warnings and/or SPC outlines enhanced or critical fire outlook	<ul style="list-style-type: none"> 2-3 inches of rainfall expected over central AR today and tonight; some minor (brief) street flooding possible Scattered severe storms possible, one or two tornadoes expected, along with reports of strong winds/wind damage and ~1" hail
Orange	<p style="text-align: center;">Moderate</p> <p>Safety: Often Threatening to Life and Property, Some Damage Unavoidable Impact Potential: Typically Results in Minor Disruption to Daily Life</p>	Severe: Enhanced Risk from SPC Flooding: Minor flooding expected over a widespread area (including urban locations), or Moderate flooding expected over isolated areas Tropical: A Tropical Storm expected to move towards or near any coastline Fire: Critical fire outlook for more than 2 consecutive days, Warnings for 2 or more consecutive days, D3-D4 drought conditions	<ul style="list-style-type: none"> A snow/sleet mix is expected to move through or near the DFW area tomorrow morning; travel impacts likely Numerous severe storms possible, a few tornadoes possible along with several reports of wind damage along with damaging hail Some large fires reported, burn bans advertised, critical conditions expected
Red	<p style="text-align: center;">Major</p> <p>Safety: Extensive Property Damage Likely, Life Saving Actions Also will be Needed Impact Potential: Will likely result in Large Disruption to Daily Life</p>	Severe: Moderate Risk from SPC Flooding: Moderate flooding expected over a widespread area (including urban locations) Tropical: A Hurricane expected to move towards or near any coastline Fire: Large areas of critical conditions for 2 or more days, Warnings for 3 or more days, Severe to extreme drought	<ul style="list-style-type: none"> A Category 1 hurricane will be moving towards the NW Gulf in the next few days Widespread severe storms likely, strong tornadoes, widespread wind damage, and destructive hail Large fires ongoing throughout the area with critical fire weather conditions expected to continue
Purple	<p style="text-align: center;">Extreme</p> <p>Safety: Property Damage Unavoidable, Immediate Action to Save Life will be Needed Impact Potential: Typically Results in Long-Lived Widespread Major Disruption to Daily Life</p>	Severe: High Risk from SPC Flooding: Major flooding expected over a widespread area (including urban locations) Tropical: A Major Hurricane (Cat3 or greater) expected to move towards or near any coastline Fire: Large area of critical conditions for 2 or more days, Warnings for 3 or more days, Long term (months) of severe to extreme drought	<ul style="list-style-type: none"> A Category 4 hurricane is headed towards the SE LA; major storm surge, flooding and damaging winds anticipated to begin tomorrow Widespread severe storms expected, tornado outbreak probable with long-lived, very widespread and particularly intense storms

Criteria for the color codes in this briefing is to the left, please provide any feedback to sr-srh.roc@noaa.gov