



FEMA



Prepared by
Andy Bollenbacher

FEMA Region 6 Weather Threat Briefing

Thursday, July 03, 2025

Disclaimer: The purpose of this briefing is to provide a **Regional** weather threat assessment and is meant as a general overview. County/Parish decision makers should consult their local NWS forecast offices for the latest detailed, local weather information. To find your local NWS forecast office, go to www.weather.gov/srh.



National Oceanic and
Atmospheric Administration
U.S. Department of Commerce

National Weather Service
Southern Region



Summary

- **Flash Flooding:**
 - **Major risk (level 3 of 4) today for debris flow flooding over Ruidoso. Risk of debris flow flooding will be little to none by tomorrow. Major risk (level 3 of 4) for debris flow flooding over the HPCC complex today. Little to none risk by tomorrow.**
 - **Slight risk (level 2 of 4) for flash flooding outside of burn scars today in S NM, C/W TX.**
- **River Flooding: Minor river flooding in SW-SE TX and E AR. Impacts to mainly secondary roads and agriculture. River levels generally are expected to recede into this weekend/early next week.**
- **Tropical: An tropical disturbance may form later this week along the southeastern US coast. This system has a 10% of development in the next 48 hours and 50% chance over the next 7 days. No impacts to FEMA 6 expected.**





FEMA Region 6 Threat Matrix

Next 7 days

	Thursday, Jul 3	Friday, Jul 4	Saturday, Jul 5	Sunday, Jul 6	Monday, Jul 7	Tuesday, Jul 8	Wednesday, Jul 9
Severe Storms			NE NM,TX/OK Panhandles				
Heavy Rain / Flash Flooding	NM, C/W TX	N/CTX, S OK		E NM, N/CTX, OK	SW-NE NM, N OK, NW AR		
Burn Scars	S NM			NM			
	N/C NM						
Fire Weather							
Tropical							
Heat							
River Flooding	SW-SE TX, E AR	SE TX, E AR	ESE TX, E AR	SE TX, E AR			

Threat levels are based on FEMA Region 6 criteria. State or local threat level criteria may differ.
For more details on the colors in the threat matrix refer to the last slide in this briefing.

Risk Levels	Little to None	Minor	Moderate	Major	Extreme
-------------	----------------	-------	----------	-------	---------





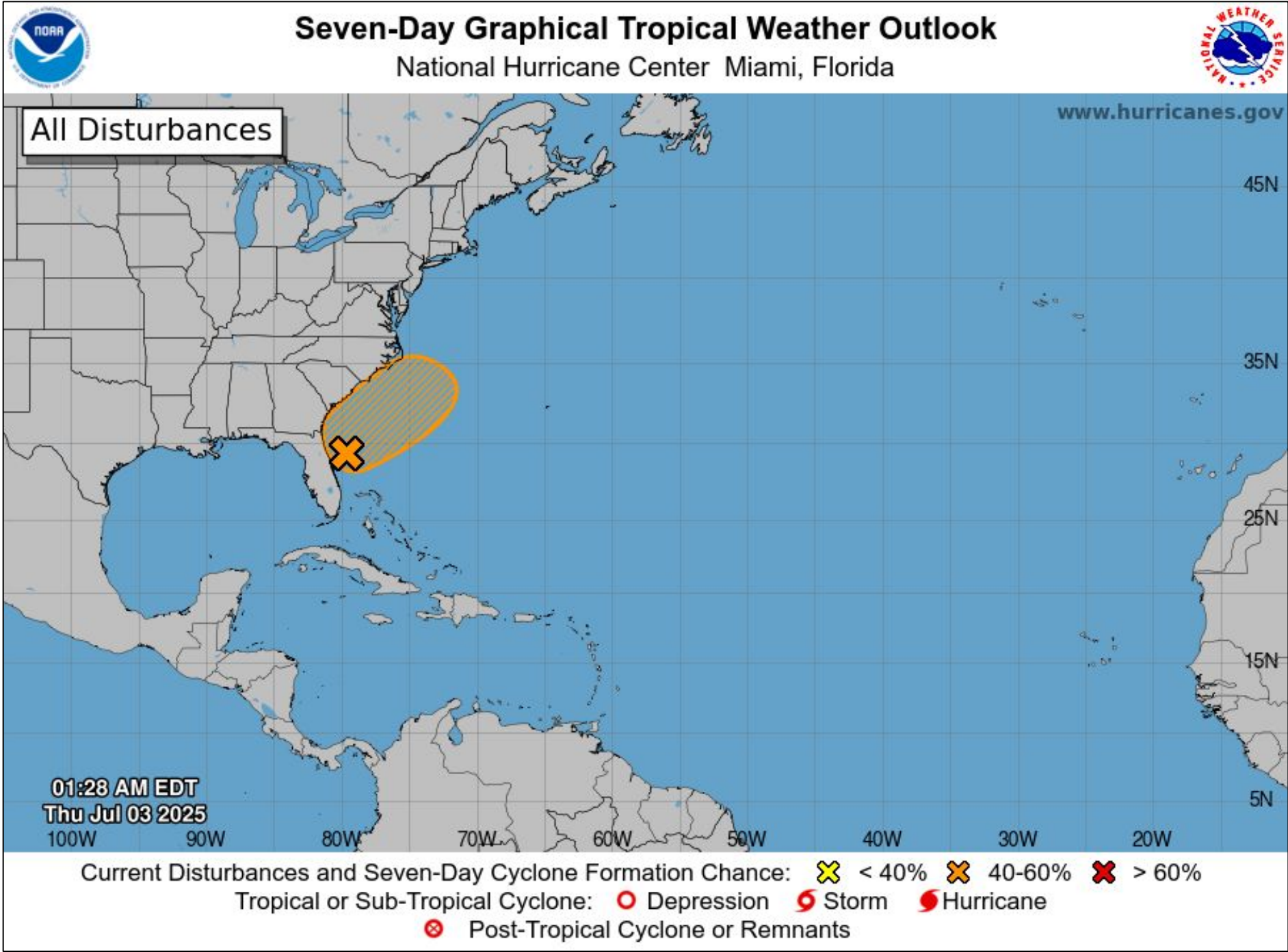
Tropical Weather Outlook – Atlantic/Gulf

Areas of Possible Development

Area	Chance of Development	Potential Impacts to FEMA 6
1	Medium	No impacts to FEMA 6.

Active Tropical Cyclones

Storm	Potential Impacts to FEMA 6



See <http://www.hurricanes.gov> for the latest on the tropics or any active storms





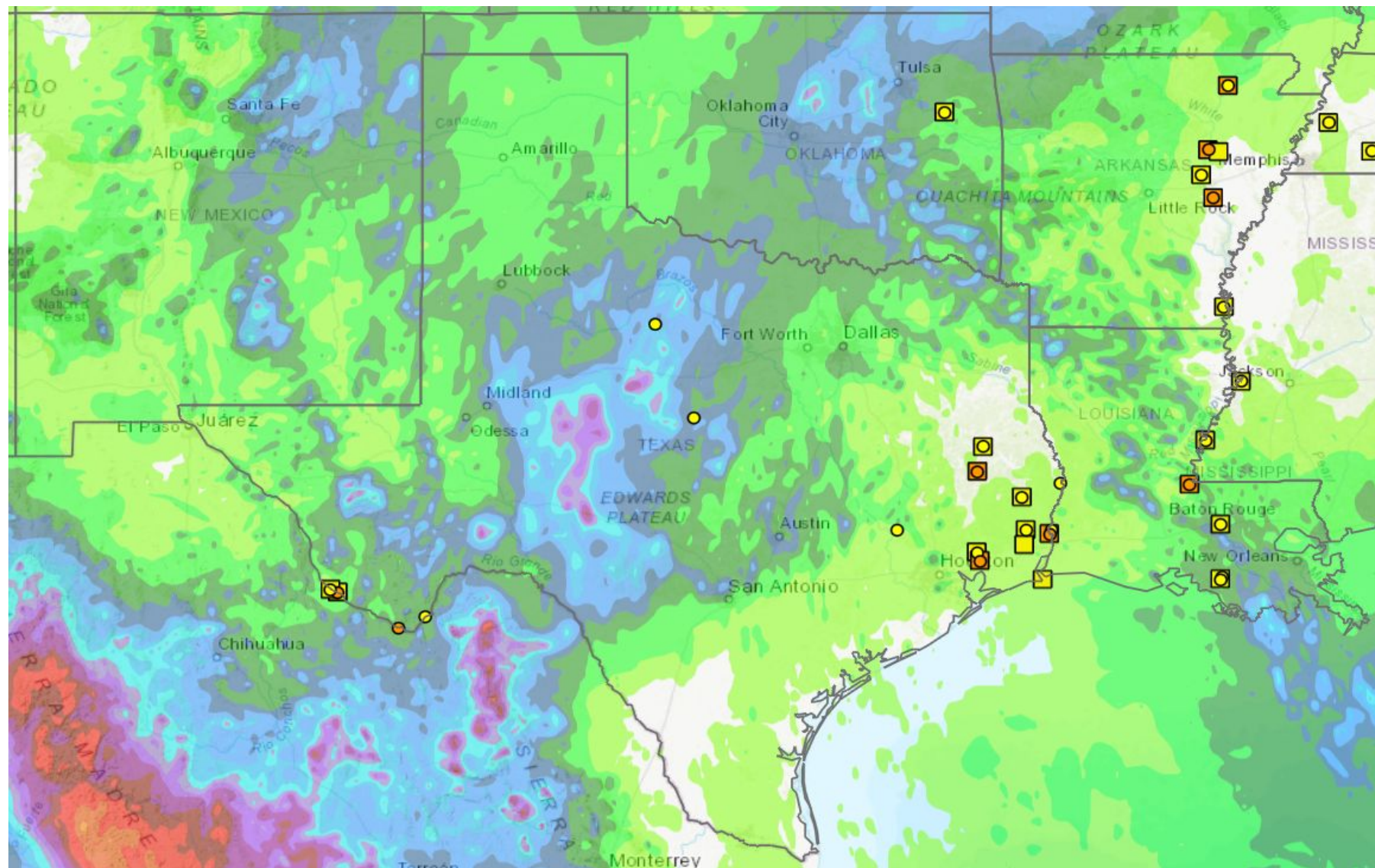
5-Day Precipitation Forecast & River Flood Status

Note: Even though the image displays 5 days of forecasted rainfall, river forecasts only include 1-2 days of rainfall

Forecast Rainfall - WPC

Cumulative Precip Forecasts

QPF 120 Hour Day 1-5



Observed River Flood Status	Forecast River Flood Status
Major Flooding	Major Flooding
Moderate Flooding	Moderate Flooding
Minor Flooding	Minor Flooding
Near	Near Flood
action	No Flooding

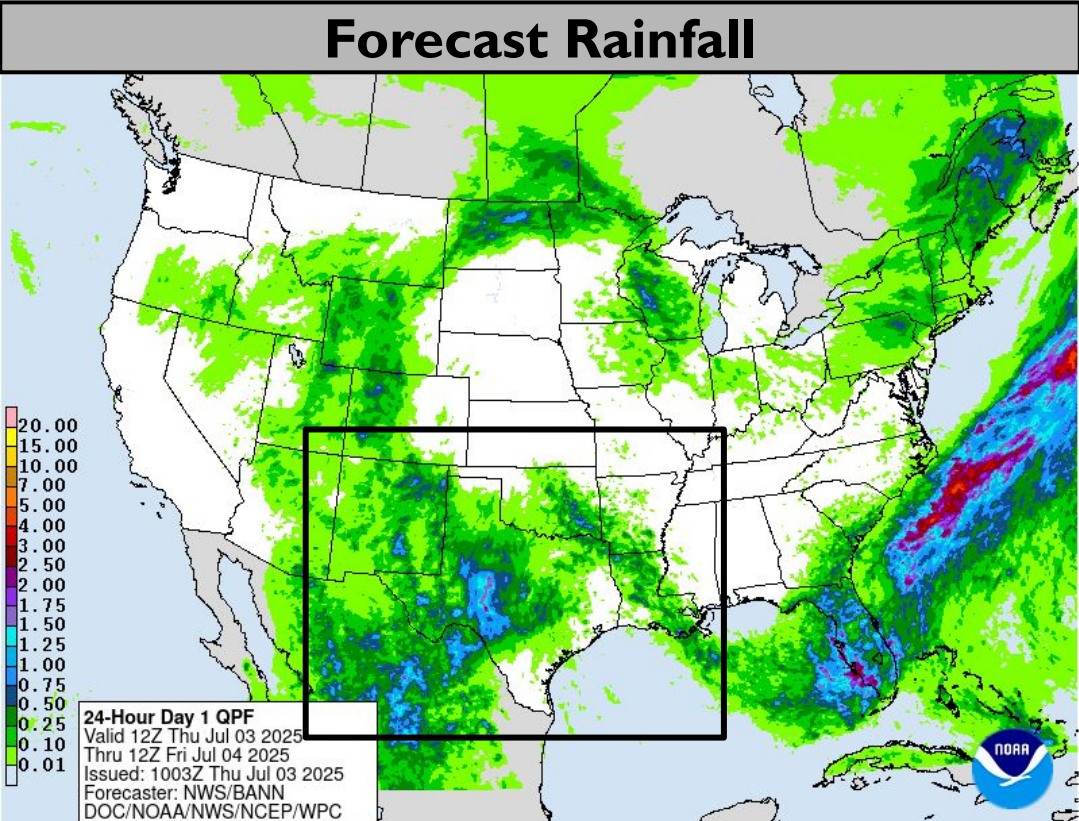
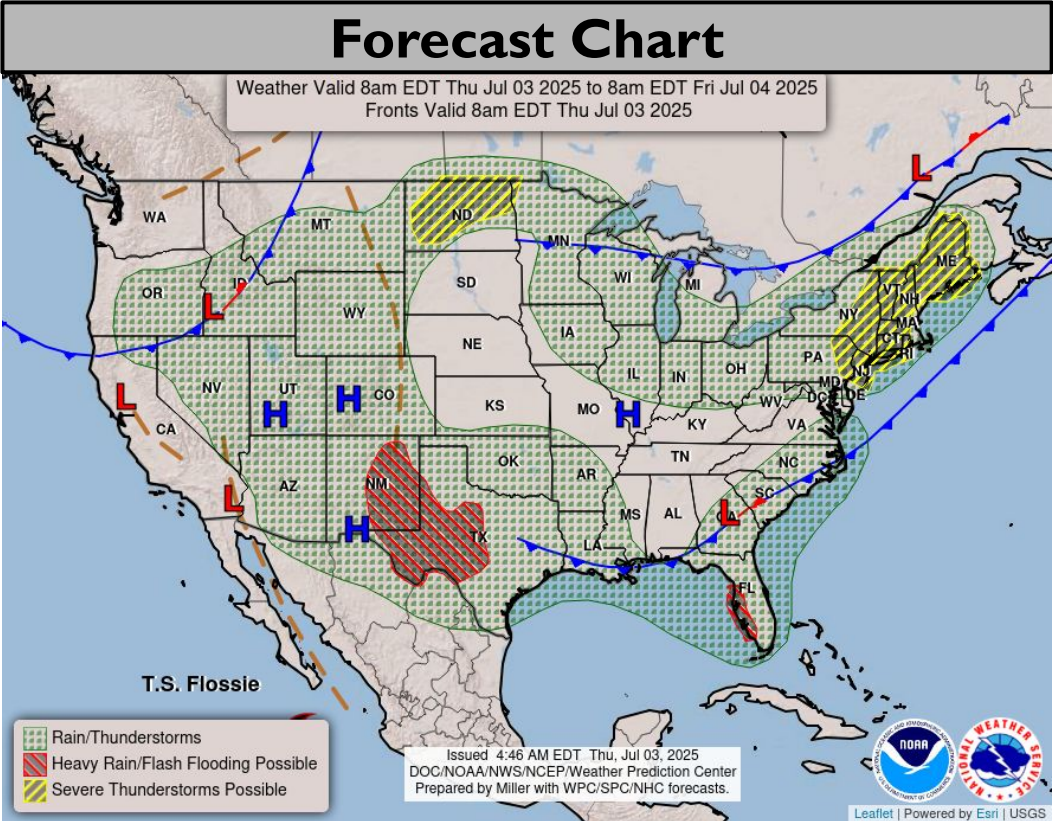
Minor river flooding in SW-SE TX and E AR. Impacts to mainly secondary roads and agriculture.

Note: Numerical levels (e.g. level 1 of 4) will not be assigned to riverine flooding due to the varying levels of impacts across flood categories.

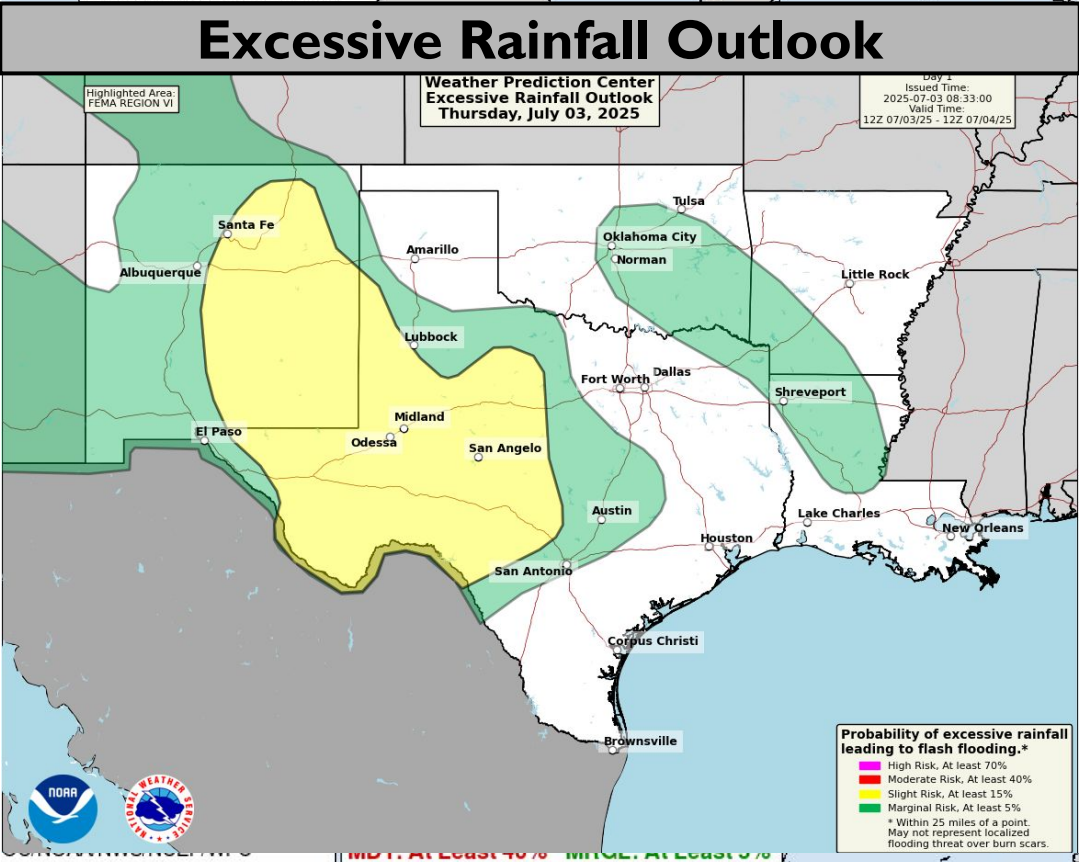
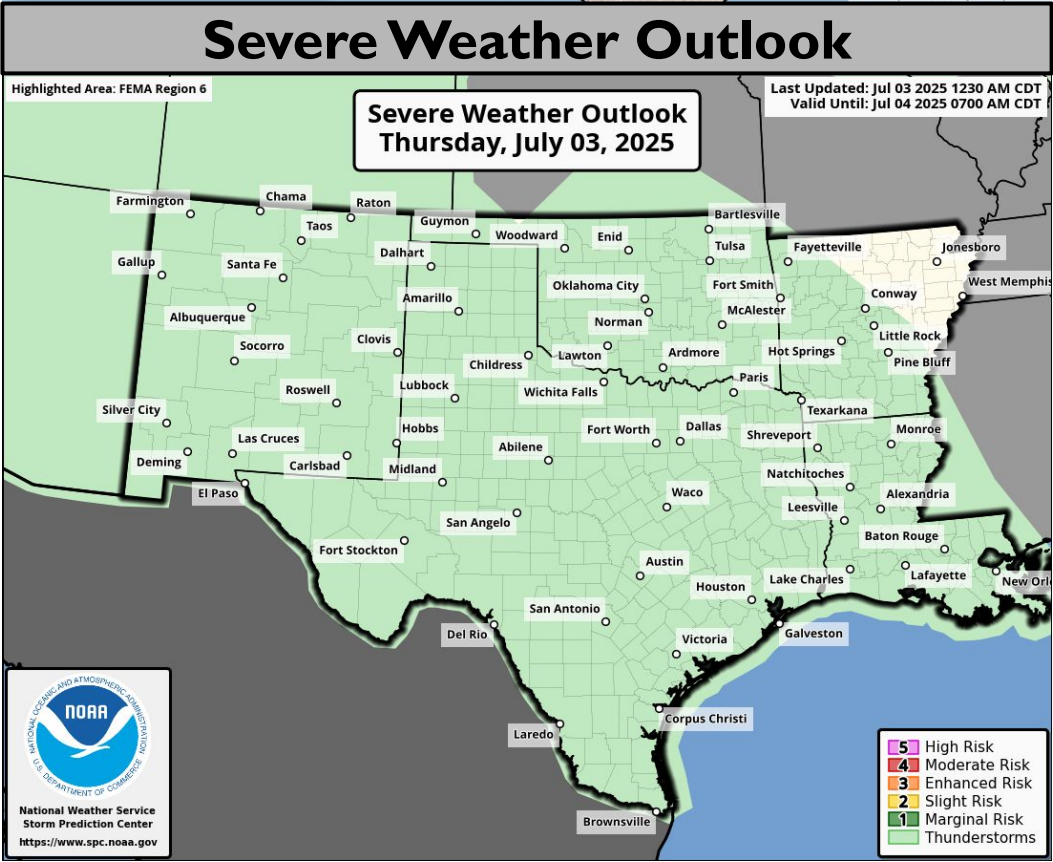




Today's Weather



Slight risk (level 2 of 4) for flash flooding outside of burn scars today in S NM, C/W TX.

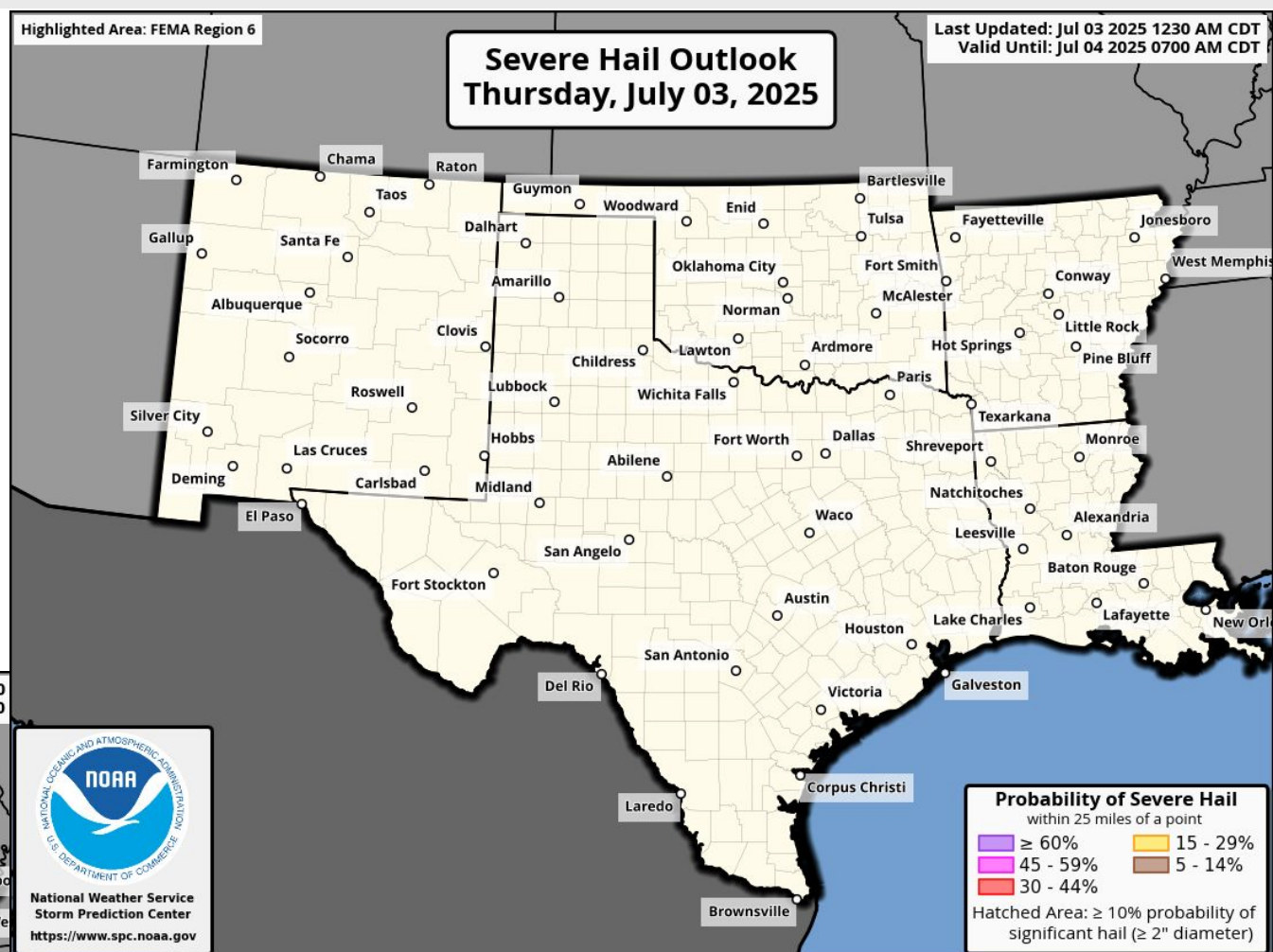
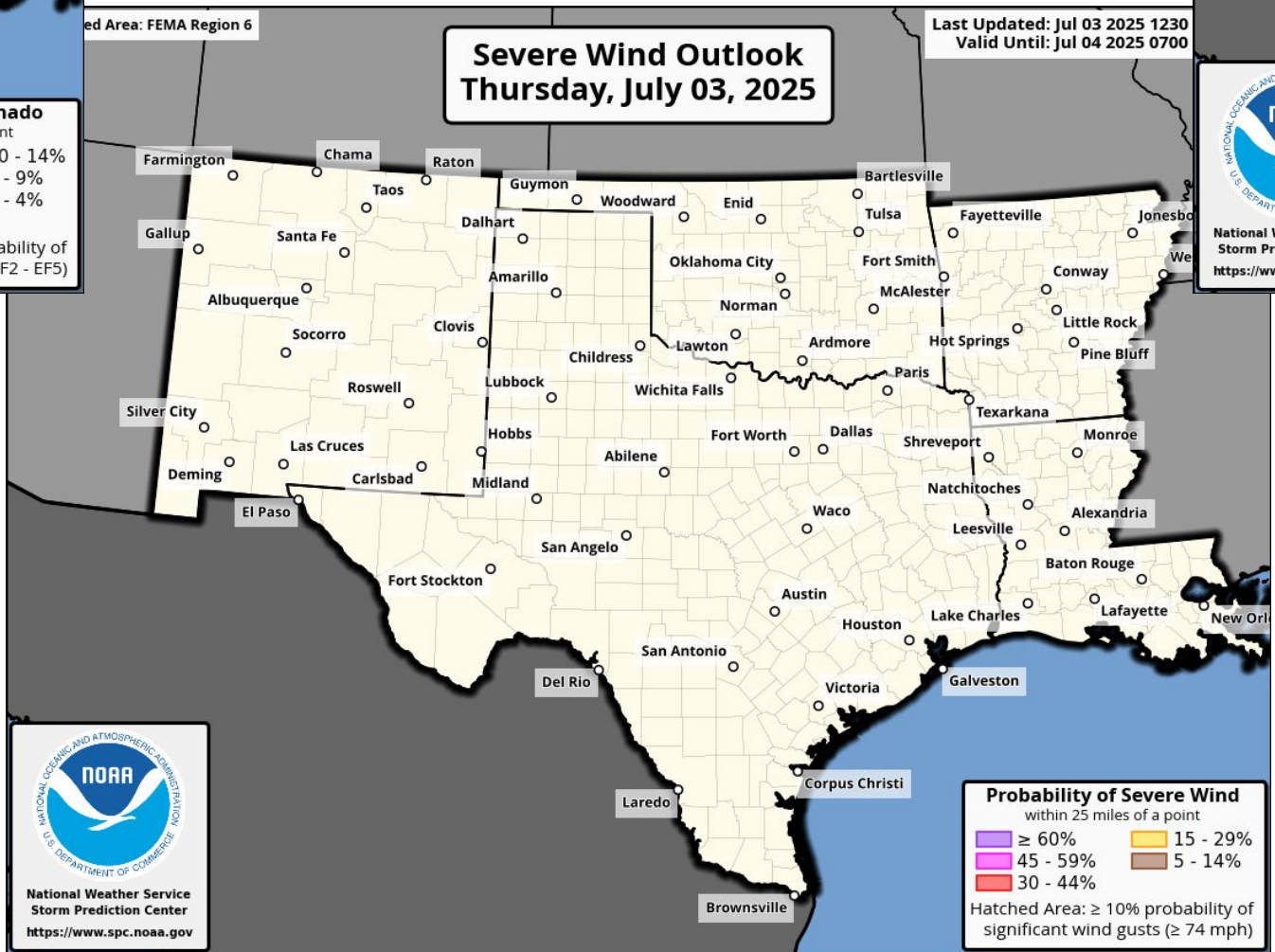
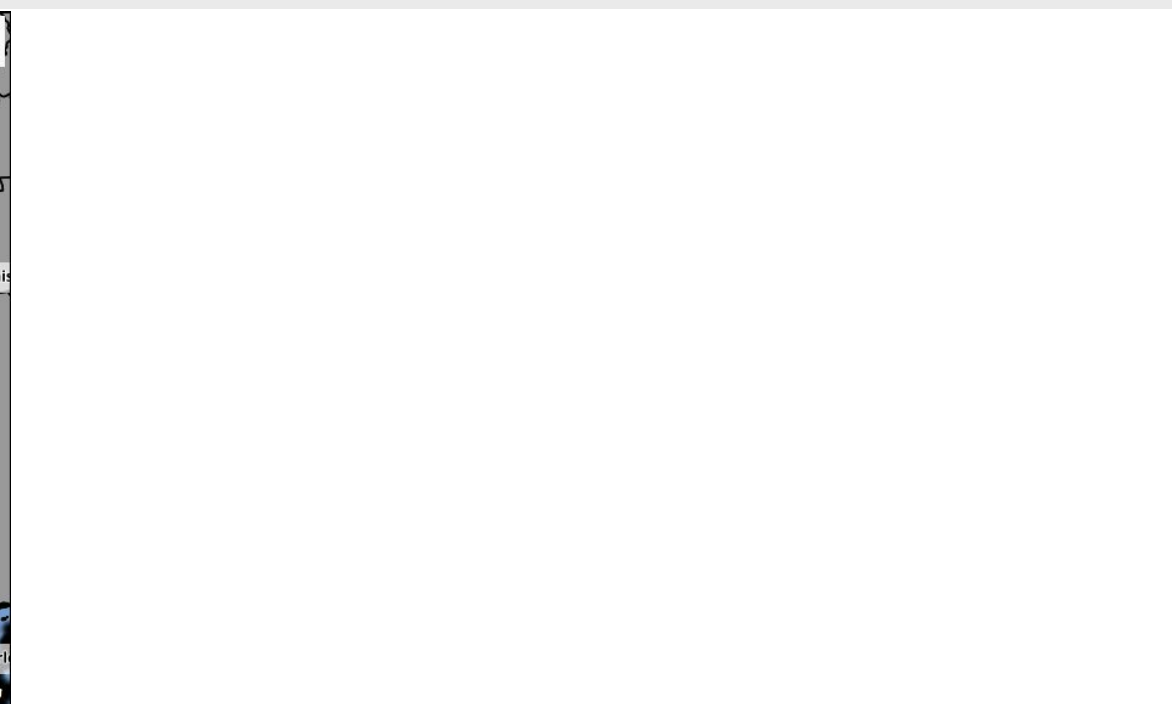
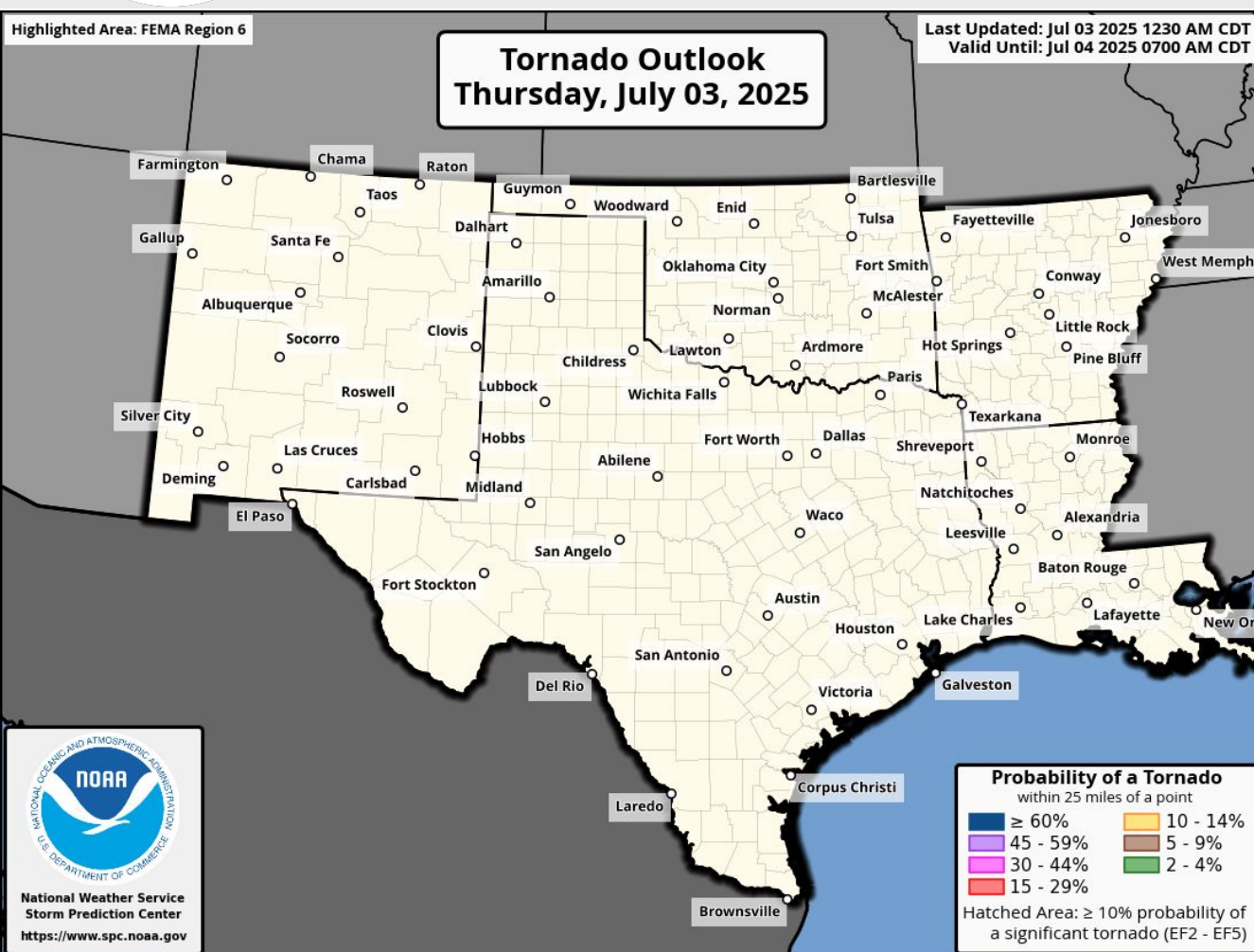


Burn Scar Flash Flooding information on Burn Scar Matrix slides





Today's Tornado & Severe Wind / Hail Probabilities

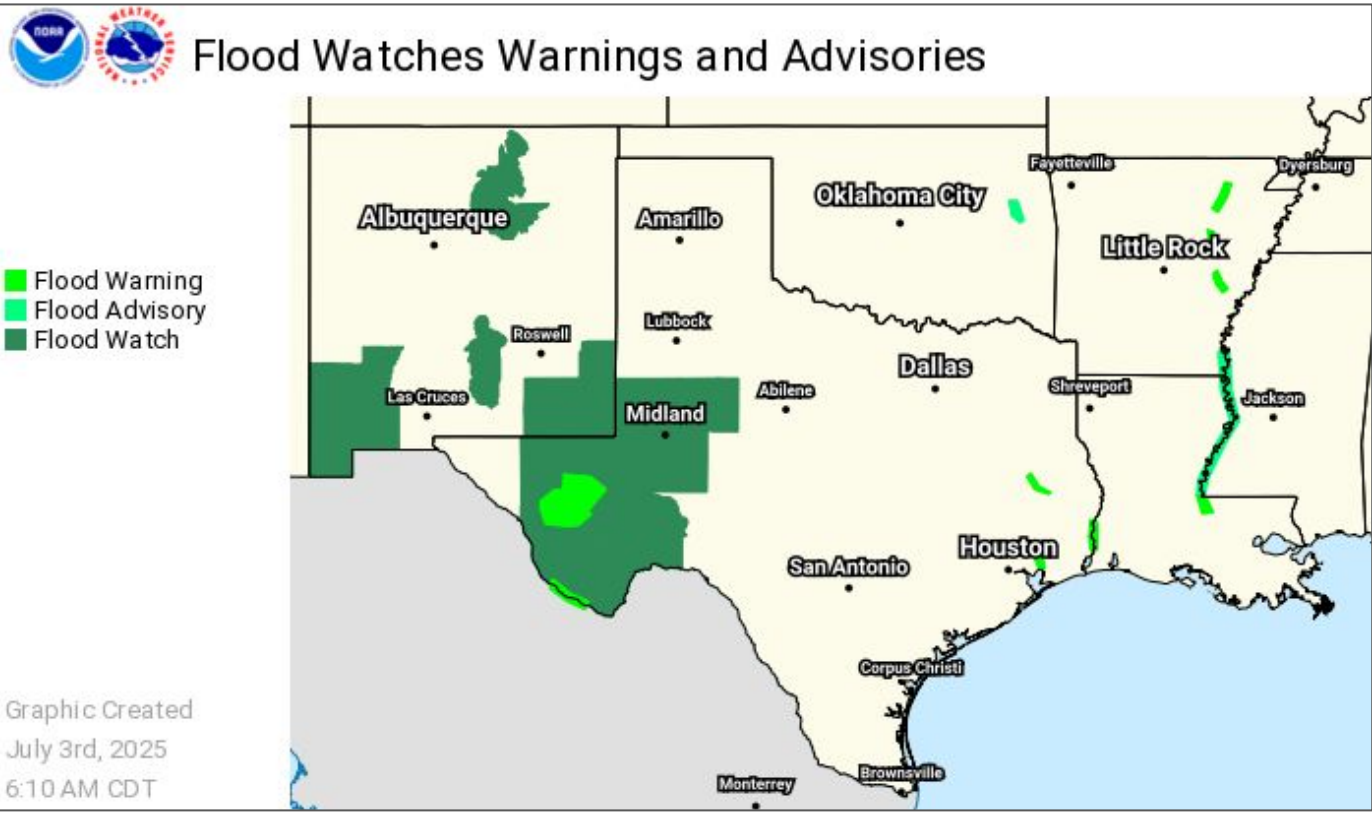
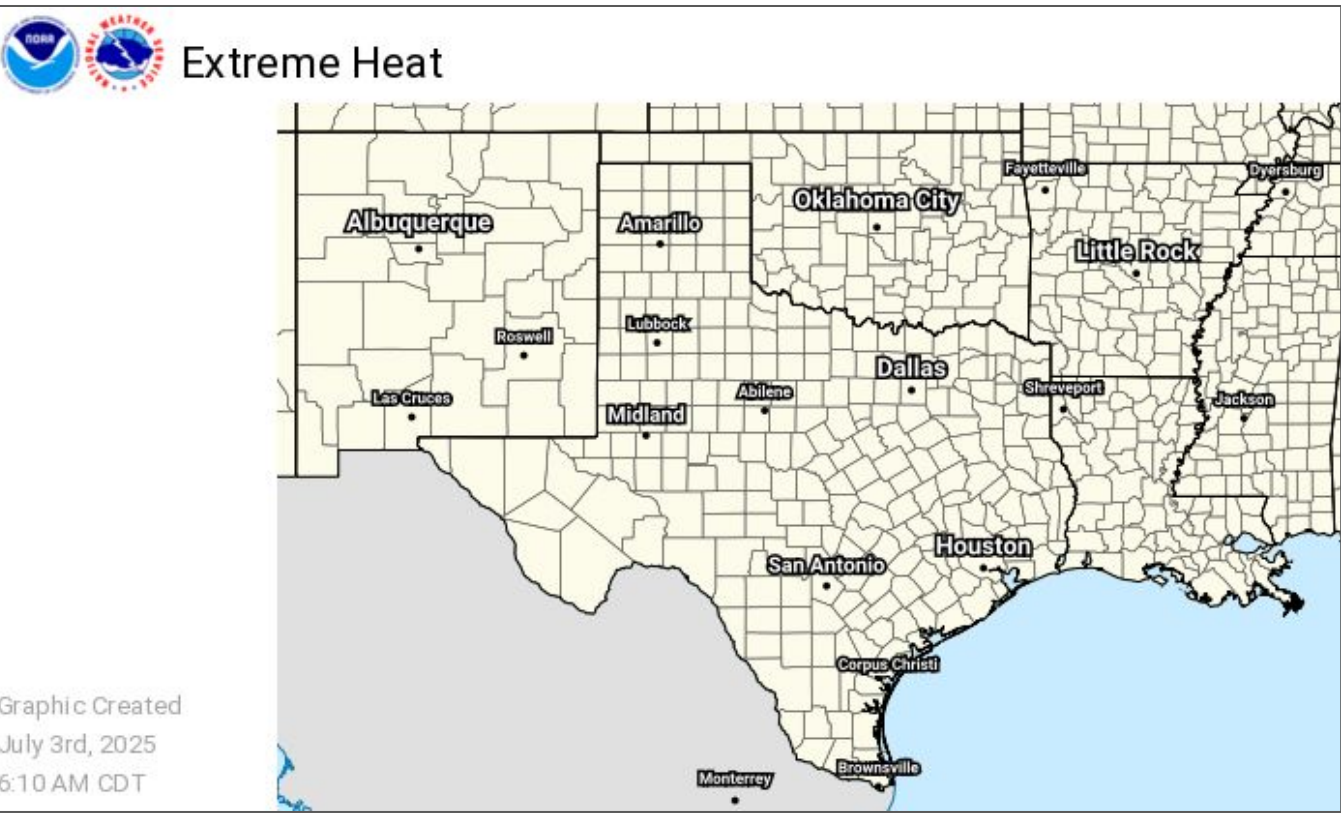
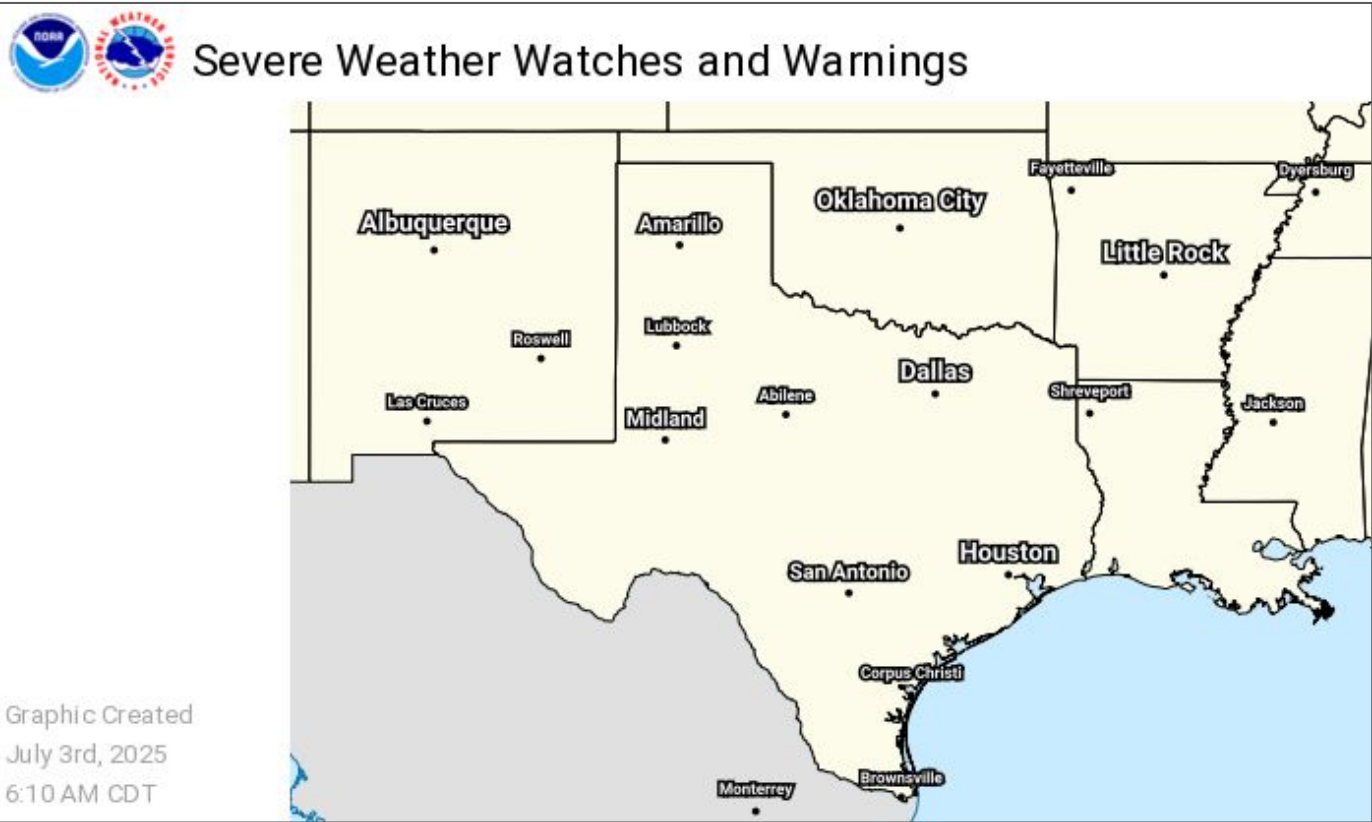




Watches, Warnings, and Advisories

Wind, Severe, Heat, and Flood Hazards

Flood Watches over NM, Far West Texas through this evening.

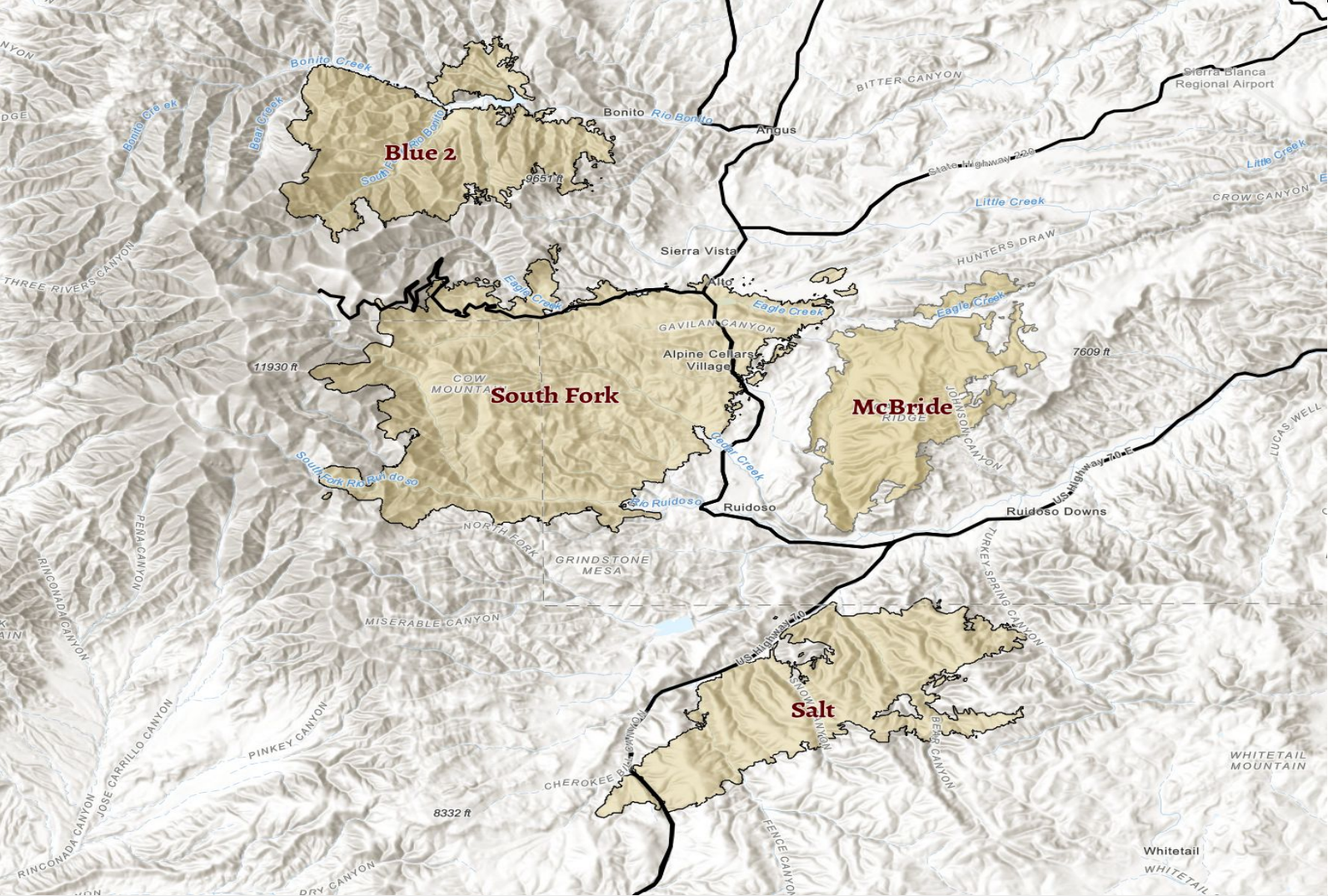




Burn Scar Debris Flow Risk - Ruidoso, New Mexico

Sacramento Complex

	Thursday, Jul 3	Friday, Jul 4	Saturday, Jul 5	Sunday, Jul 6
Flash Flooding	Major			Moderate
Timing - CDT	Noon-10 PM			Afternoon



Little to None	No Flash Flood Threat
Minor (level 1 of 4)	Slight Risk of Flash Flooding
Moderate (level 2 of 4)	Probability of Flash Flooding Issuance 40% to 60%
Major (level 3 of 4)	Flood Watch Issued OR Debris Flow Probability > 50%
Extreme (level 4 of 4)	Life Threatening Flash Flooding Likely - Historic Type Day
<ul style="list-style-type: none">WPC's Excessive Rainfall Outlook is <i>Not Applicable</i> to burn scars.*Note* 2nd year burn scars can be <u>more dangerous</u> than year 1.	

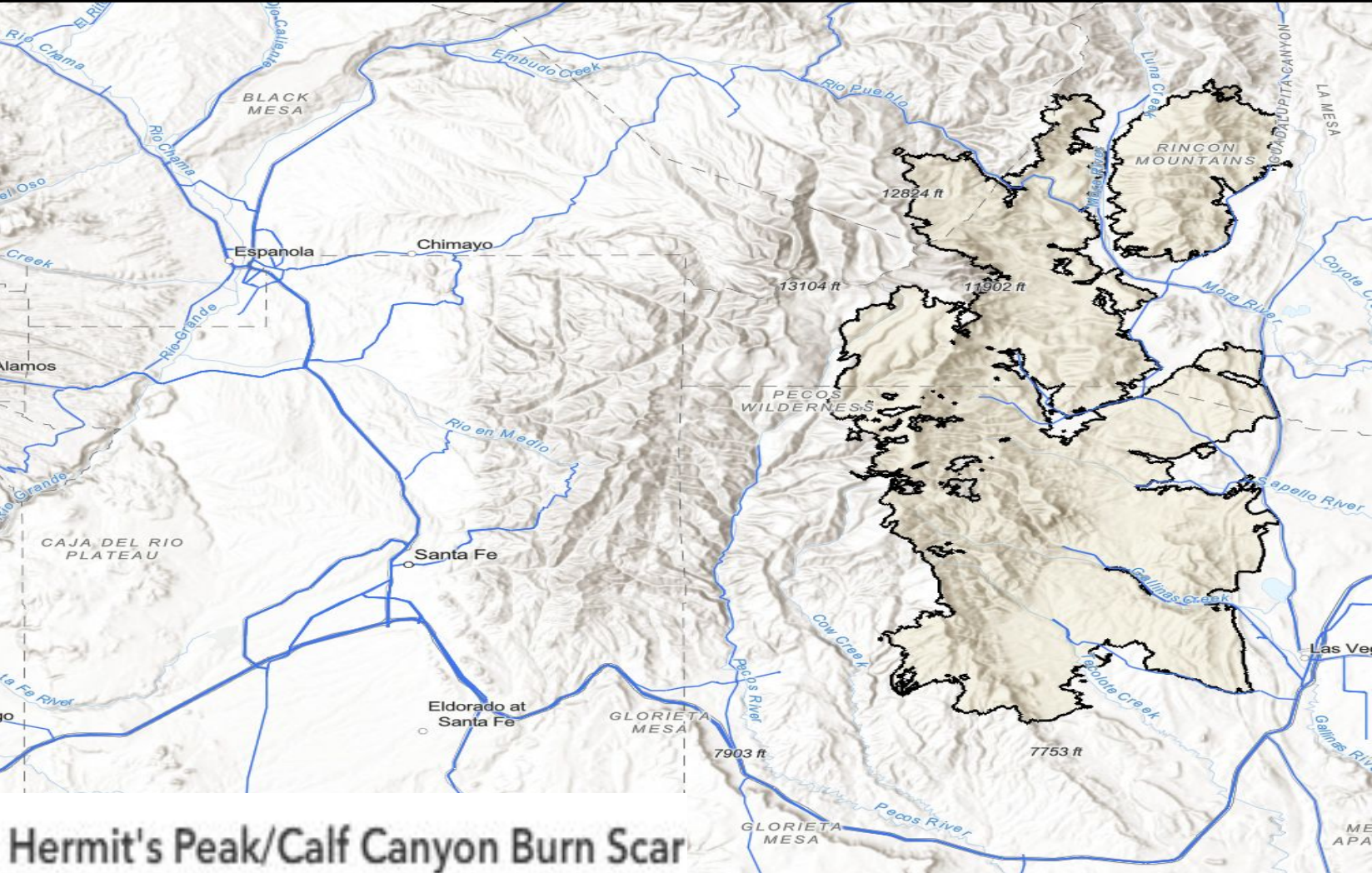




Burn Scar Debris Flow Risk - HPCC Scars New Mexico

Hermit's Peak/Calf Canyon Burn Scar

	Thursday, Jul 3	Friday, Jul 4	Saturday, Jul 5	Sunday, Jul 6
Flash Flooding	Major			Moderate
Timing - CDT	Noon-10 PM			Afternoon

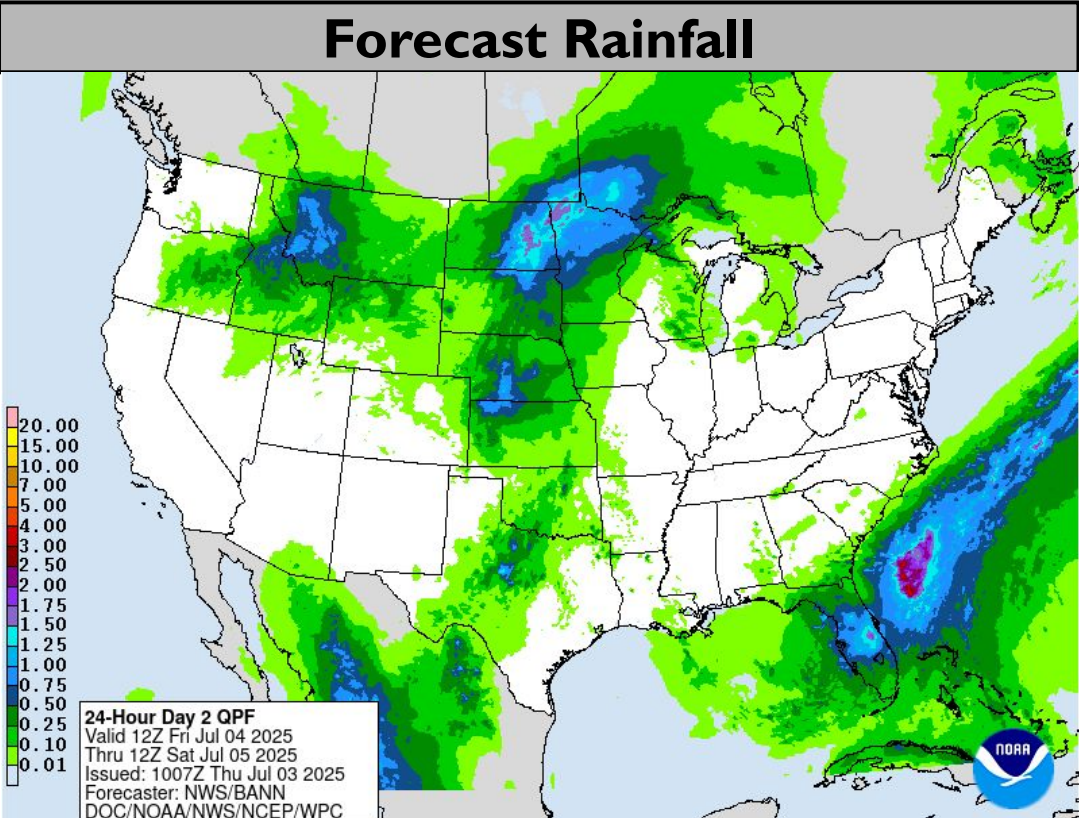
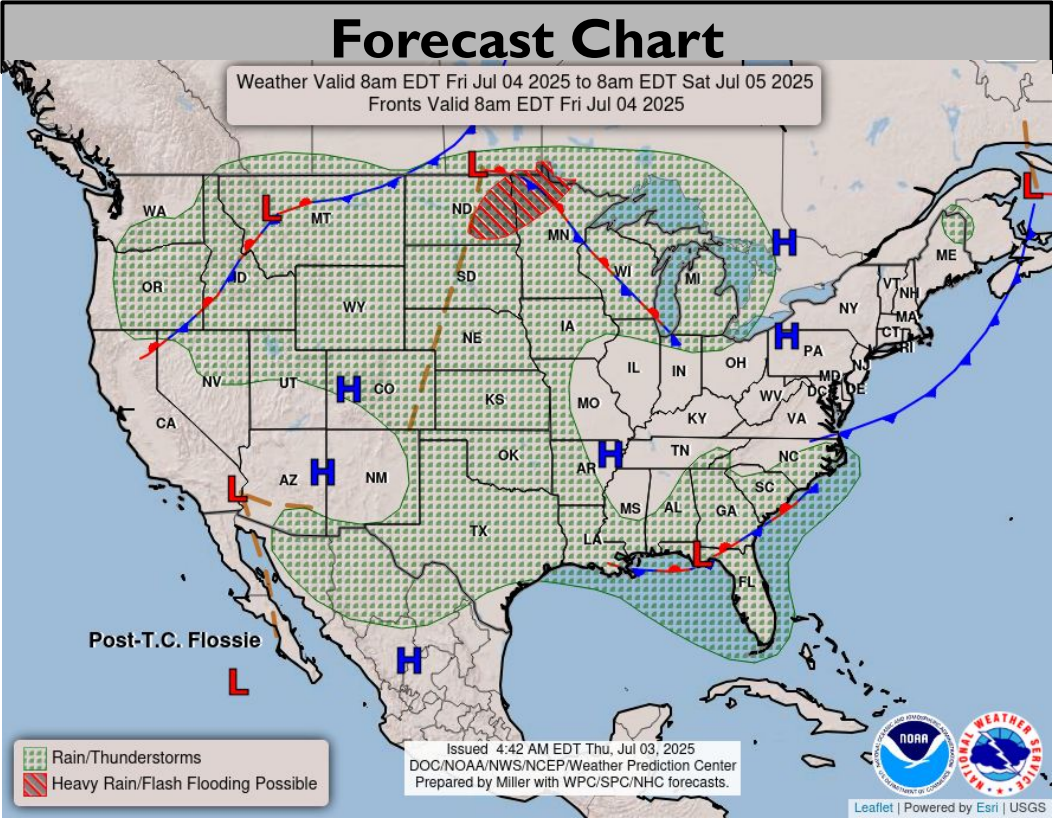


Little to None	No Flash Flood Threat
Minor (level 1 of 4)	Slight Risk of Flash Flooding
Moderate (level 2 of 4)	Probability of Flash Flooding Issuance 40% to 60%
Major (level 3 of 4)	Flood Watch Issued OR Debris Flow Probability > 50%
Extreme (level 4 of 4)	Life Threatening Flash Flooding Likely - Historic Type Day
<ul style="list-style-type: none">WPC's Excessive Rainfall Outlook is <i>Not Applicable</i> to burn scars.	

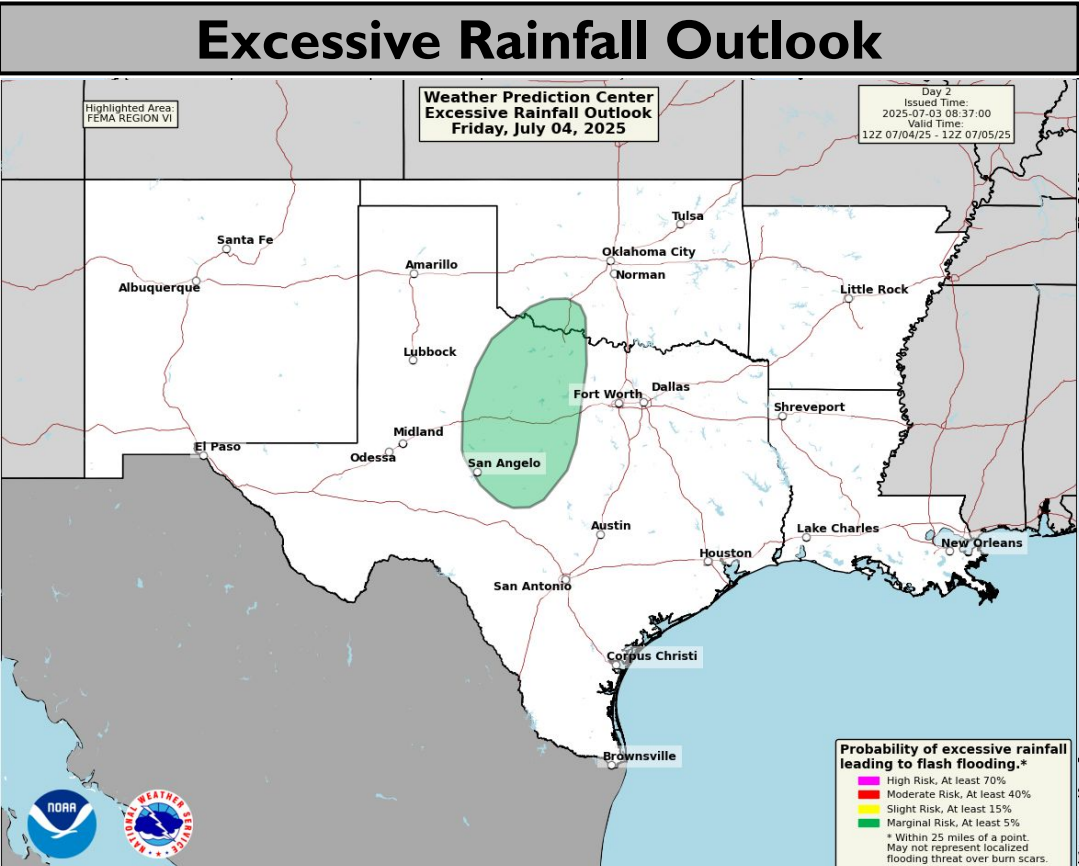
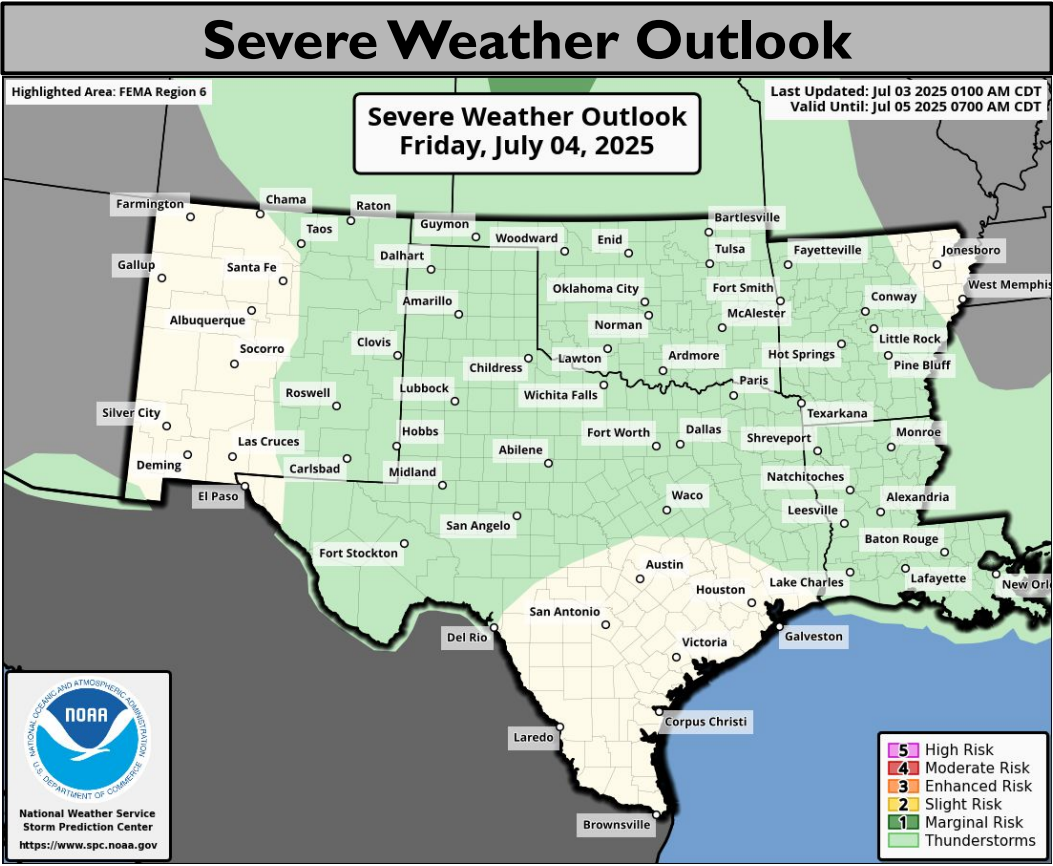




Tomorrow's Weather



Marginal risk (level 1 of 4) for flash flooding in N/CTX, S OK.

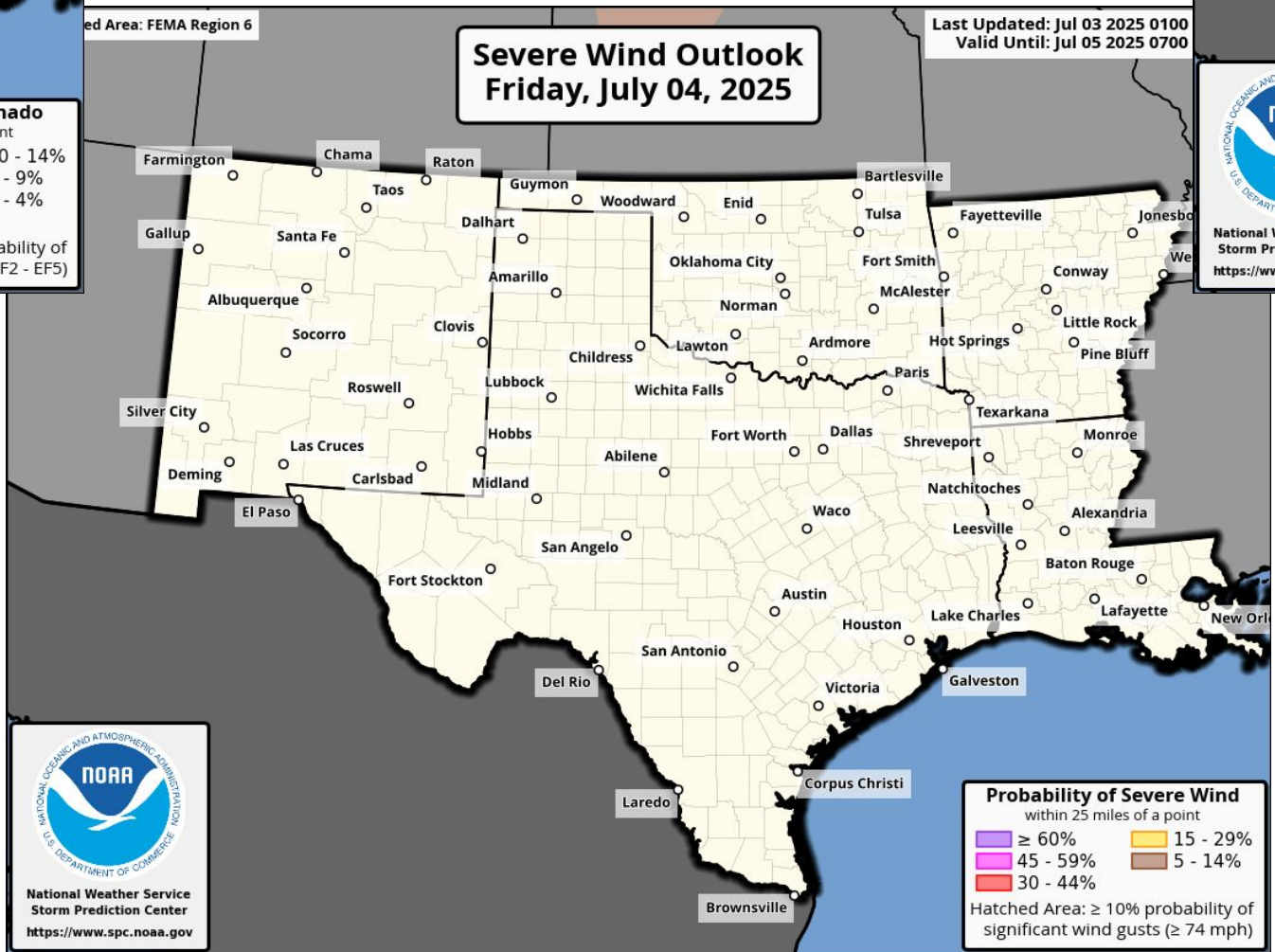
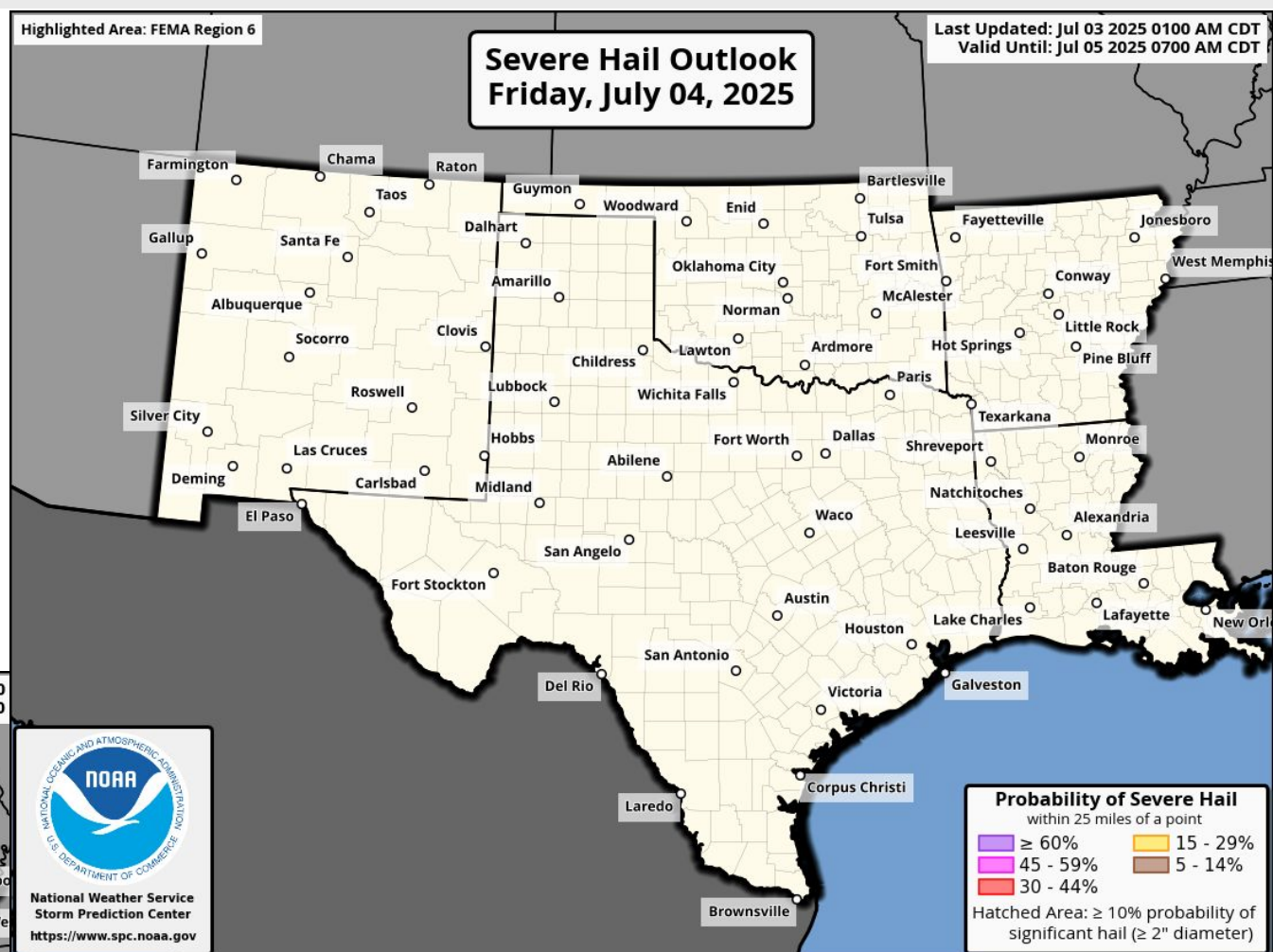
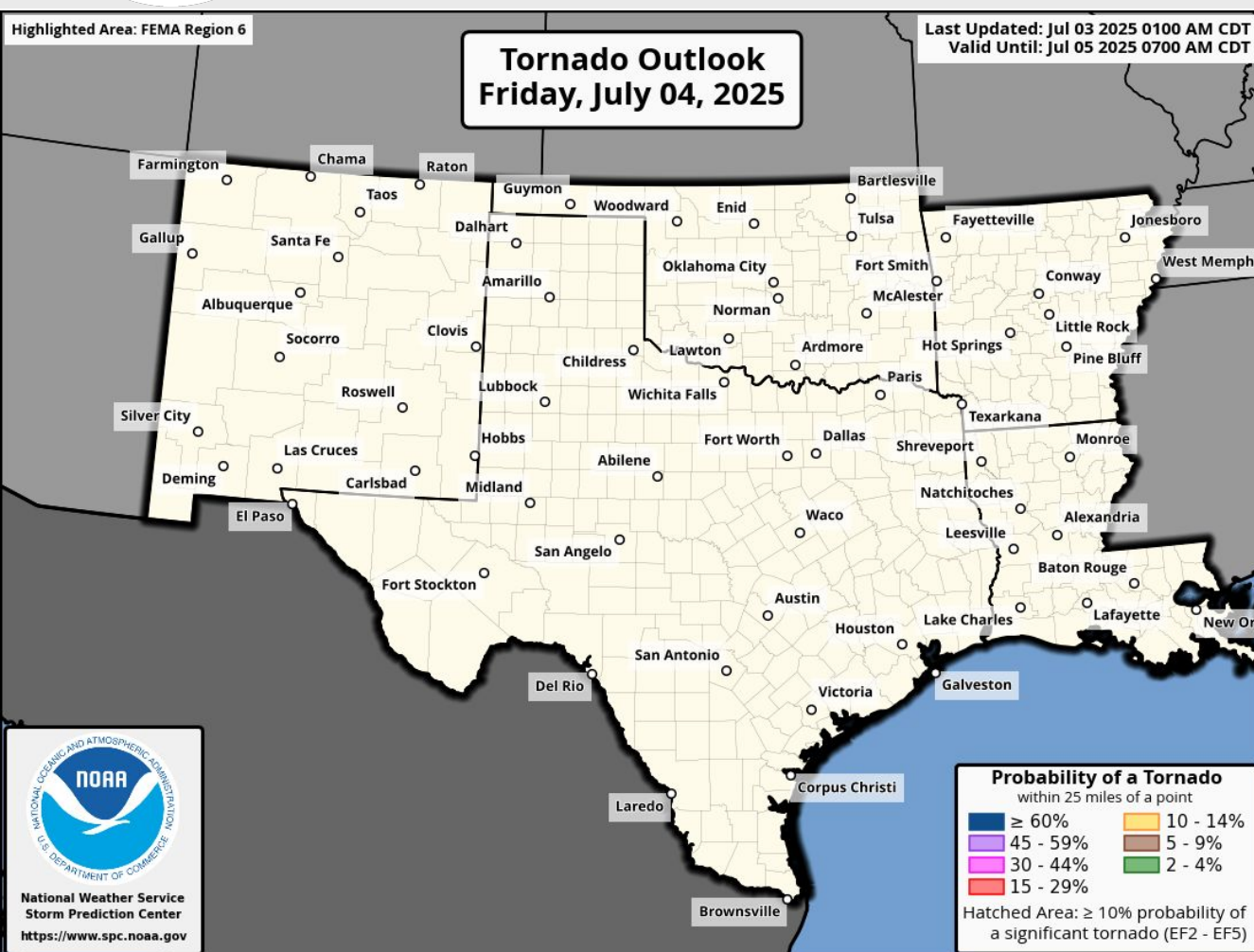


Burn Scar Flash Flooding information on Burn Scar Matrix slides



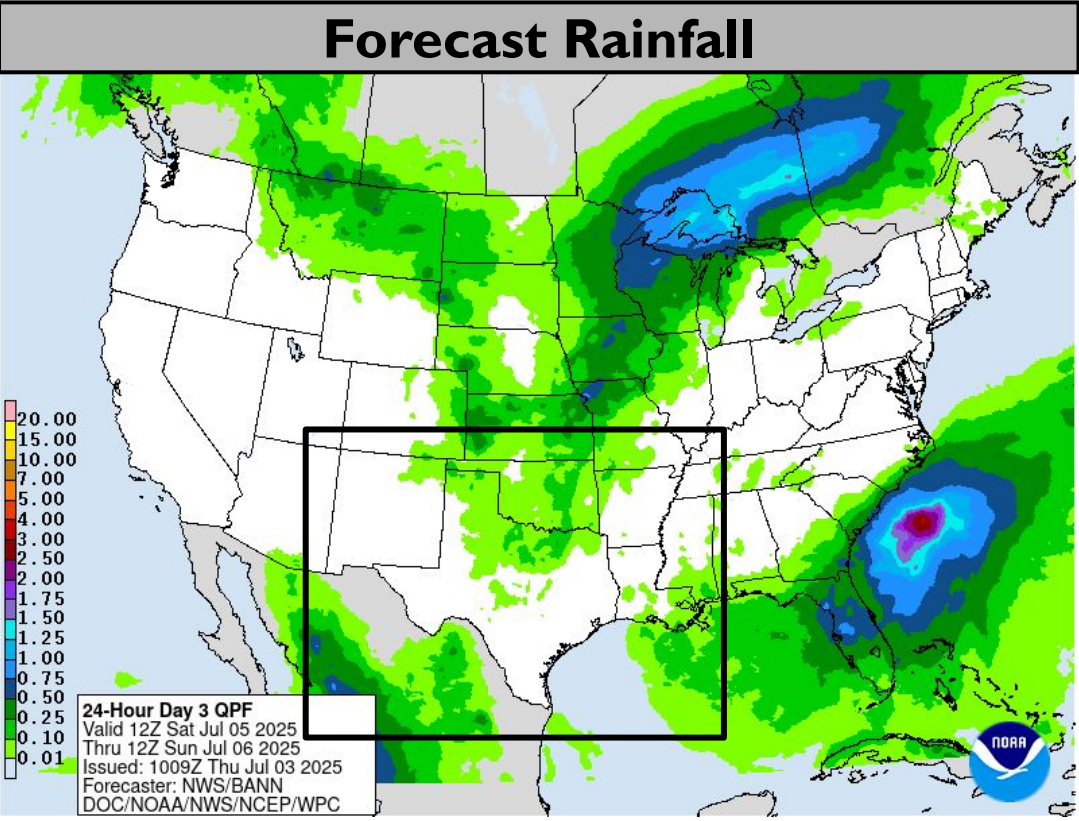
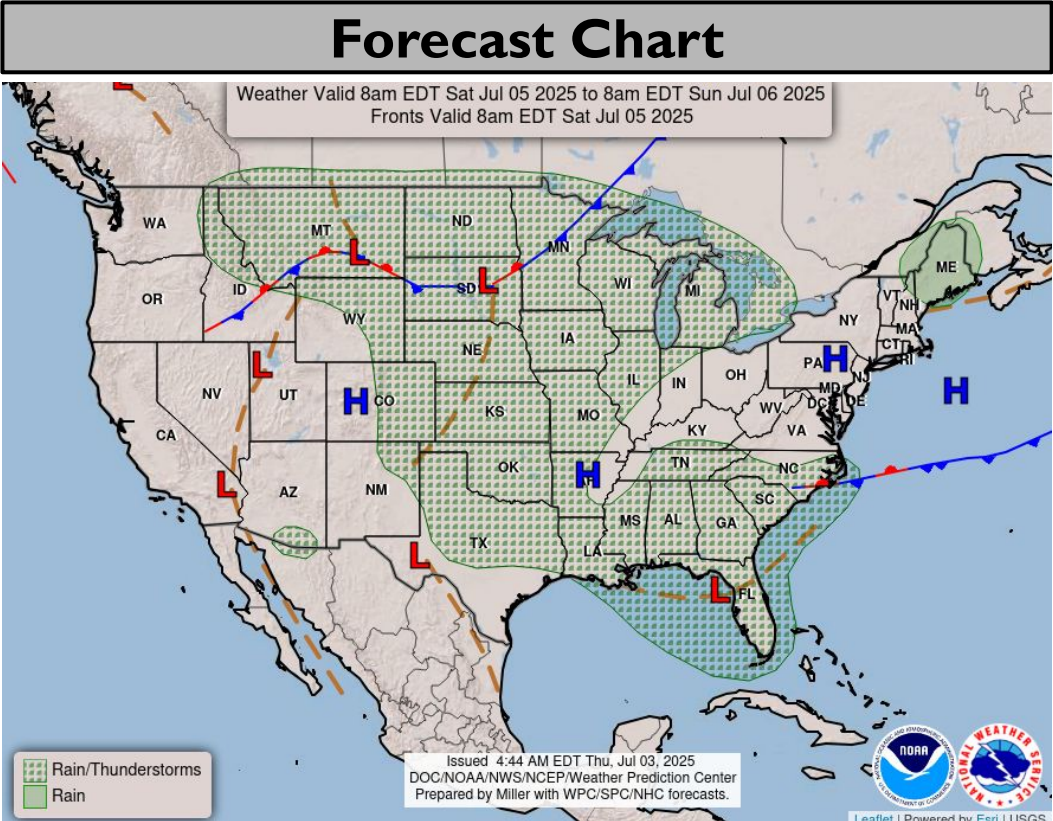


Tomorrow's Tornado & Severe Wind / Hail Probabilities

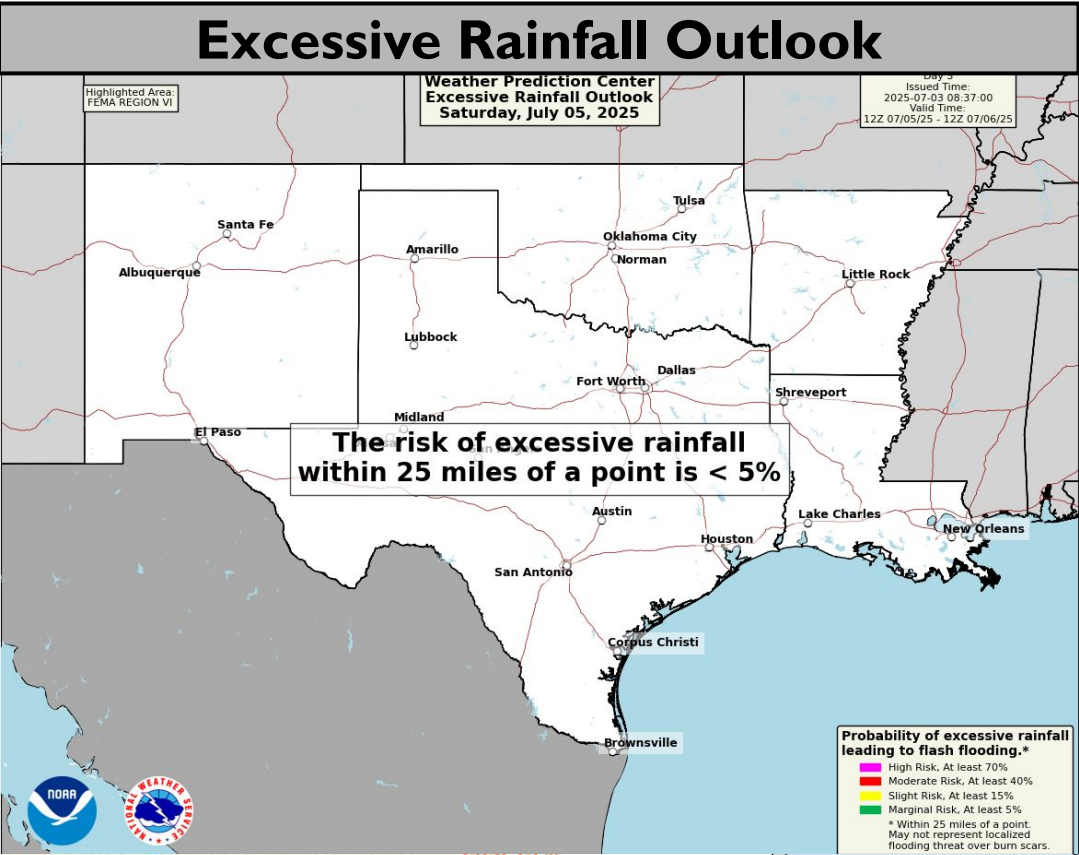
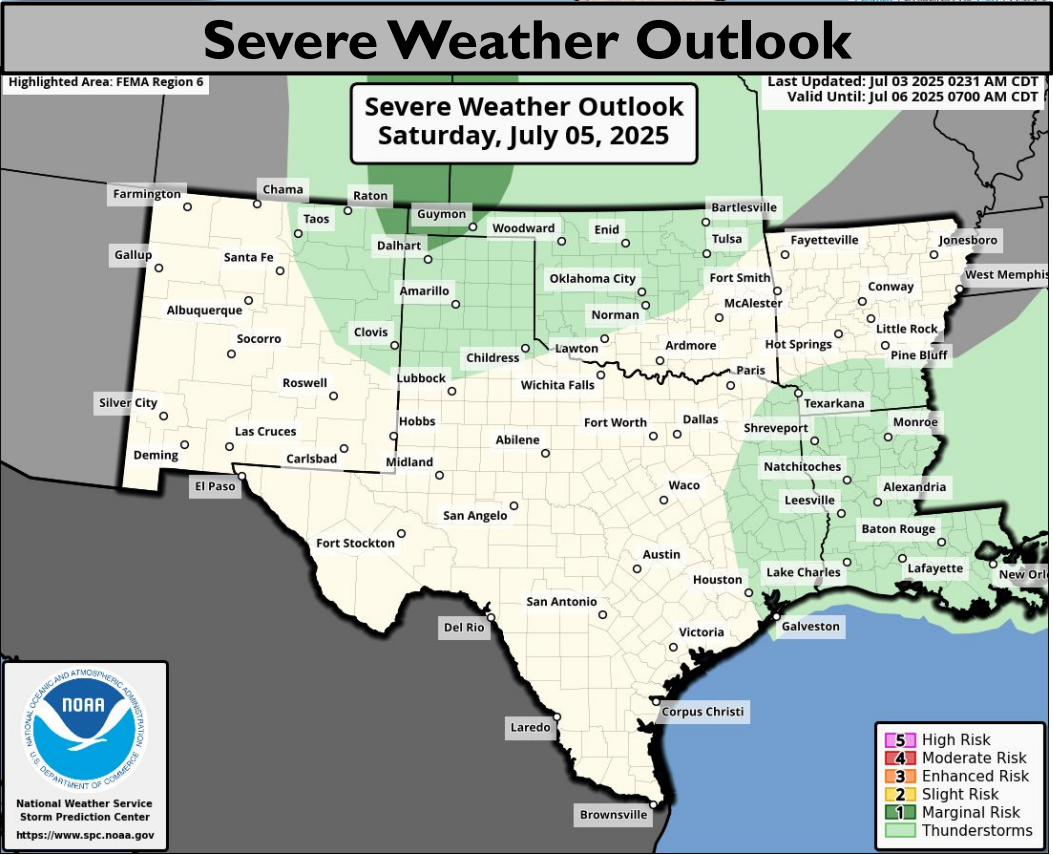




Saturday's Weather



Marginal risk (level 1 of 5) for severe storms in NE NM, TX/OK Panhandles.



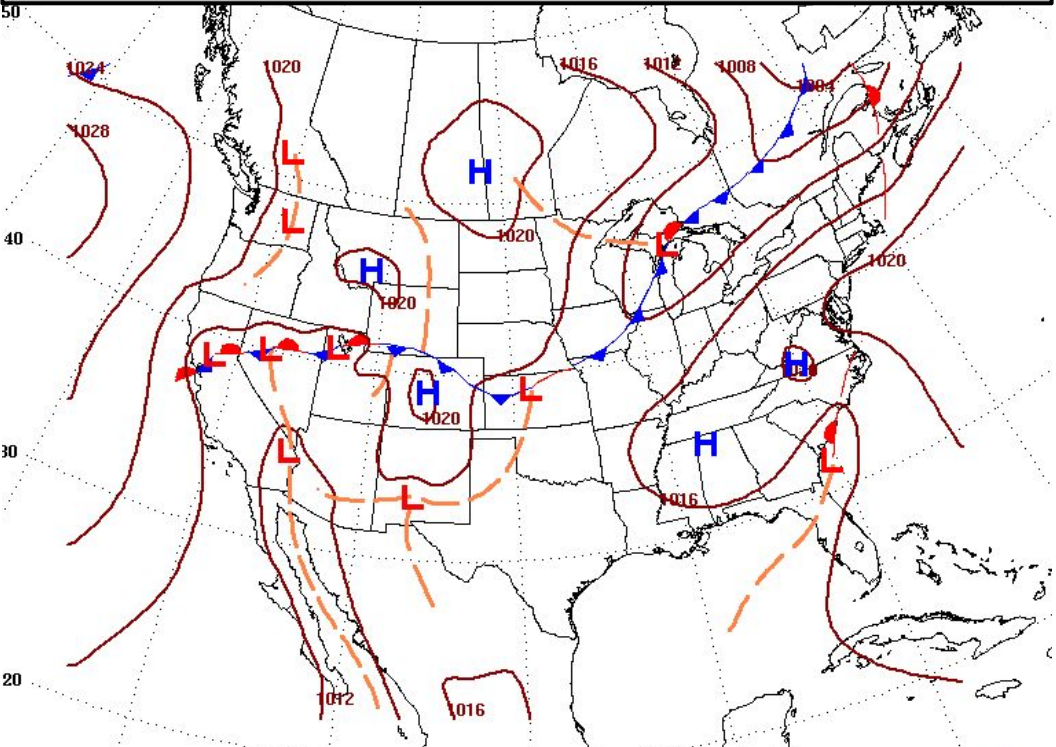
Burn Scar Flash Flooding information on Burn Scar Matrix slides



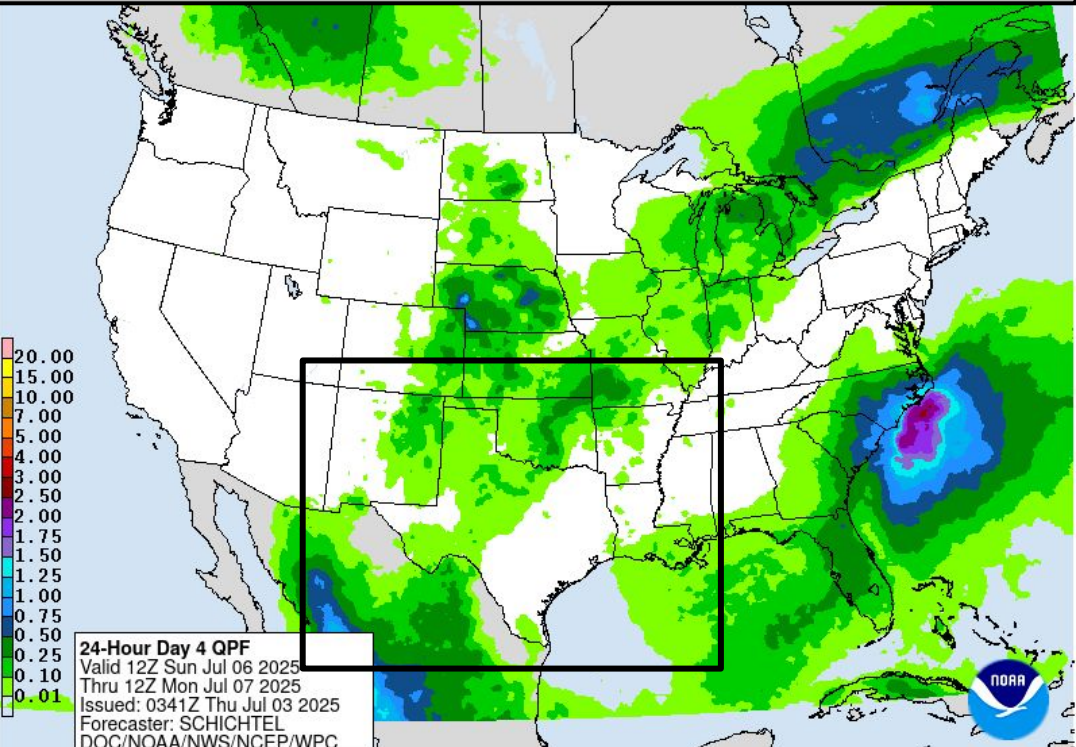


Sunday's Weather

Forecast Chart

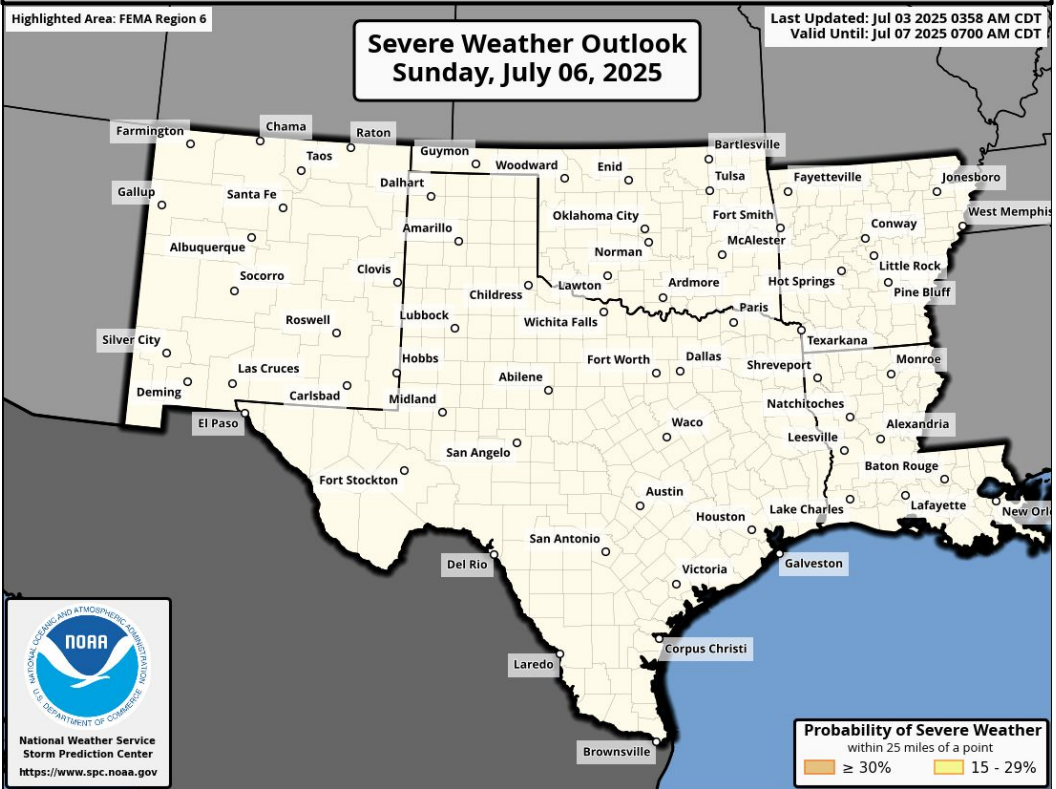


Forecast Rainfall

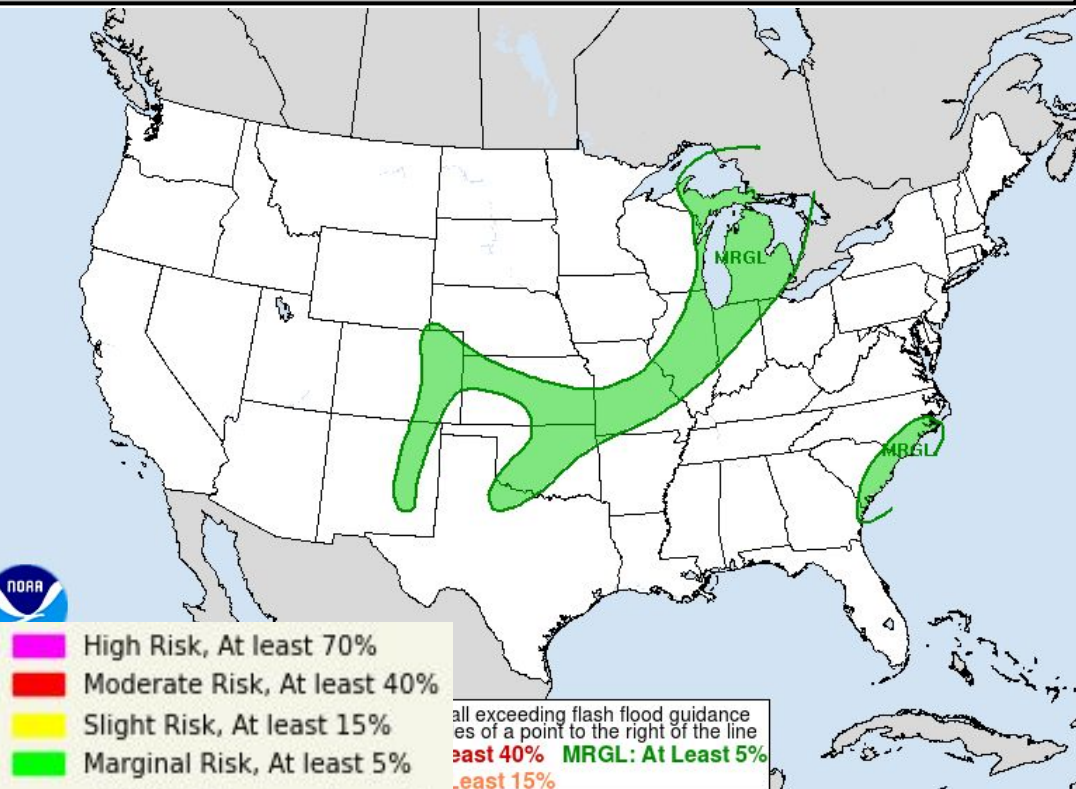


Marginal risk (level I of 4) of flash flooding in E NM, N/CTX, OK.

Severe Weather Outlook



Excessive Rainfall Outlook

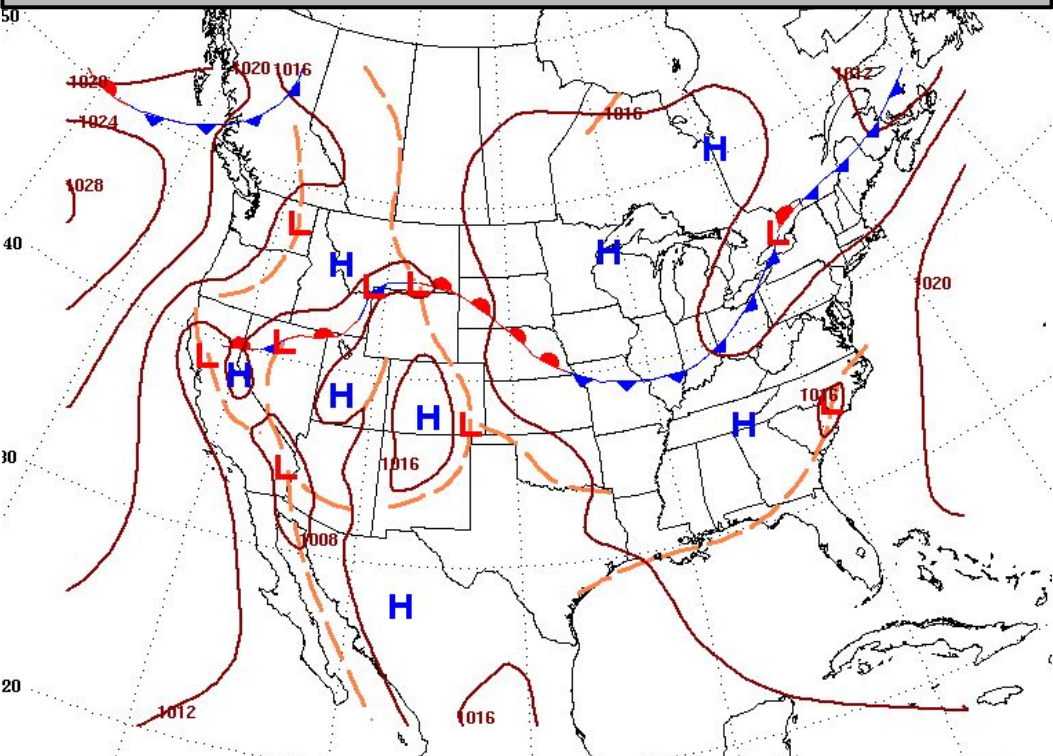


Burn Scar Flash Flooding information on Burn Scar Matrix slides

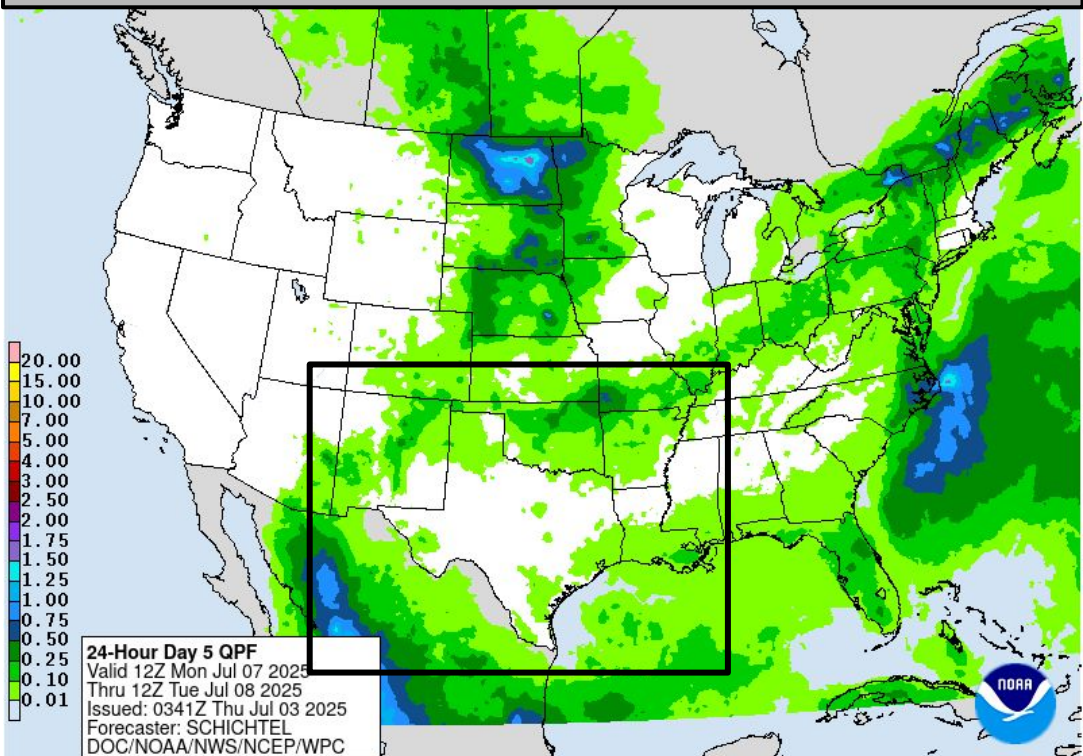


Monday's Weather

Forecast Chart

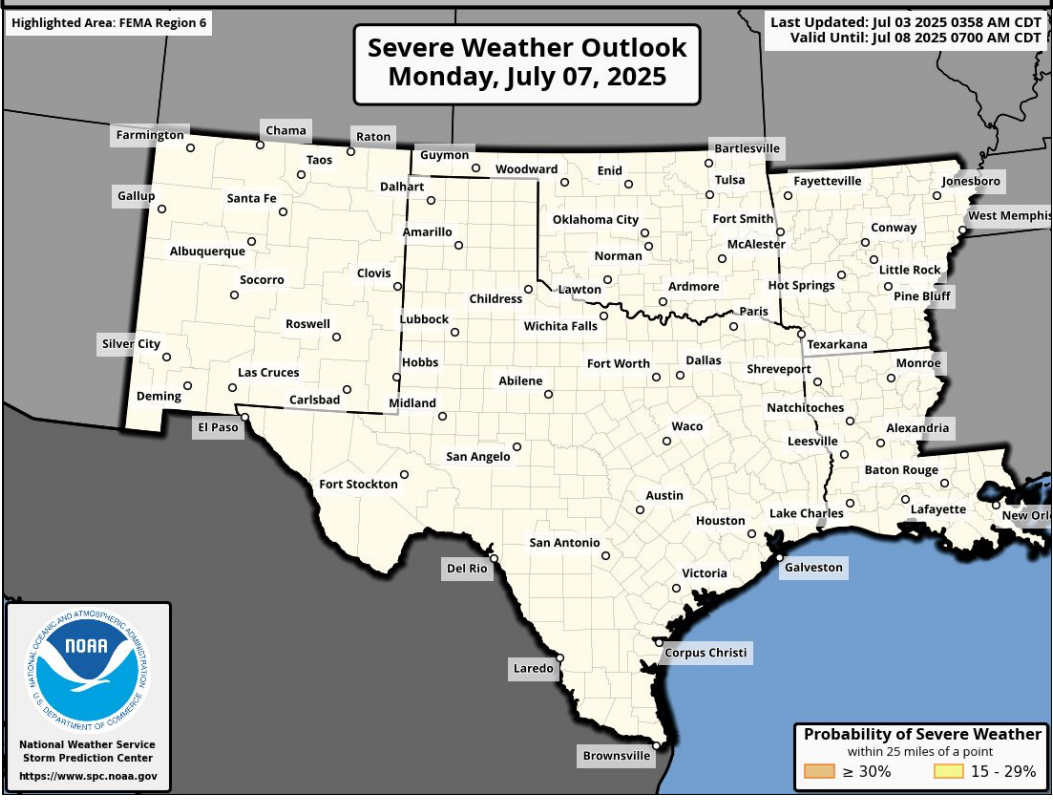


Forecast Rainfall

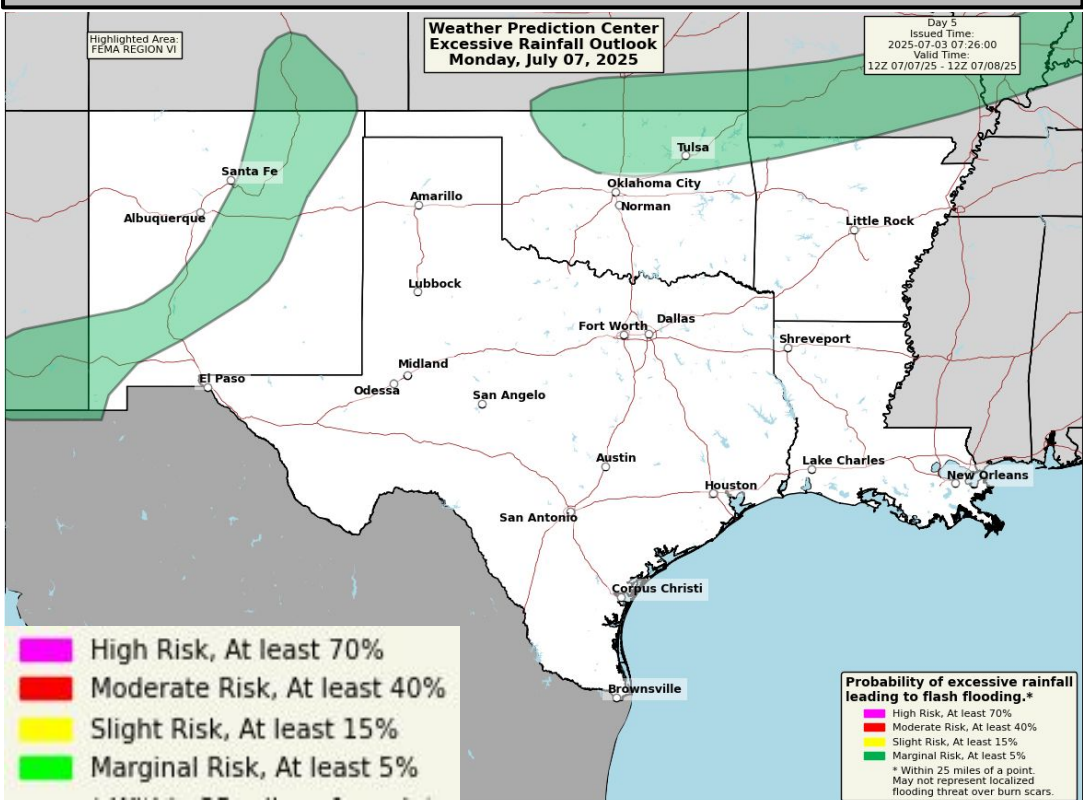


Marginal risk (level I of 4) of flash flooding in SW-NE NM, N OK, NW AR.

Severe Weather Outlook



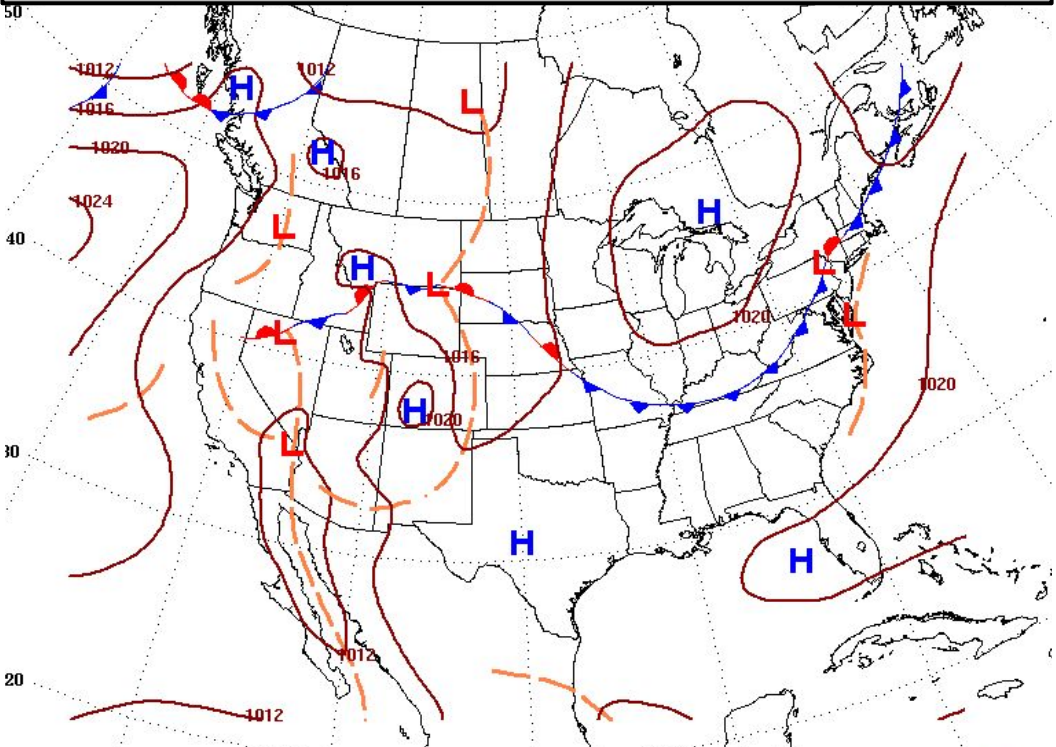
Excessive Rainfall Outlook



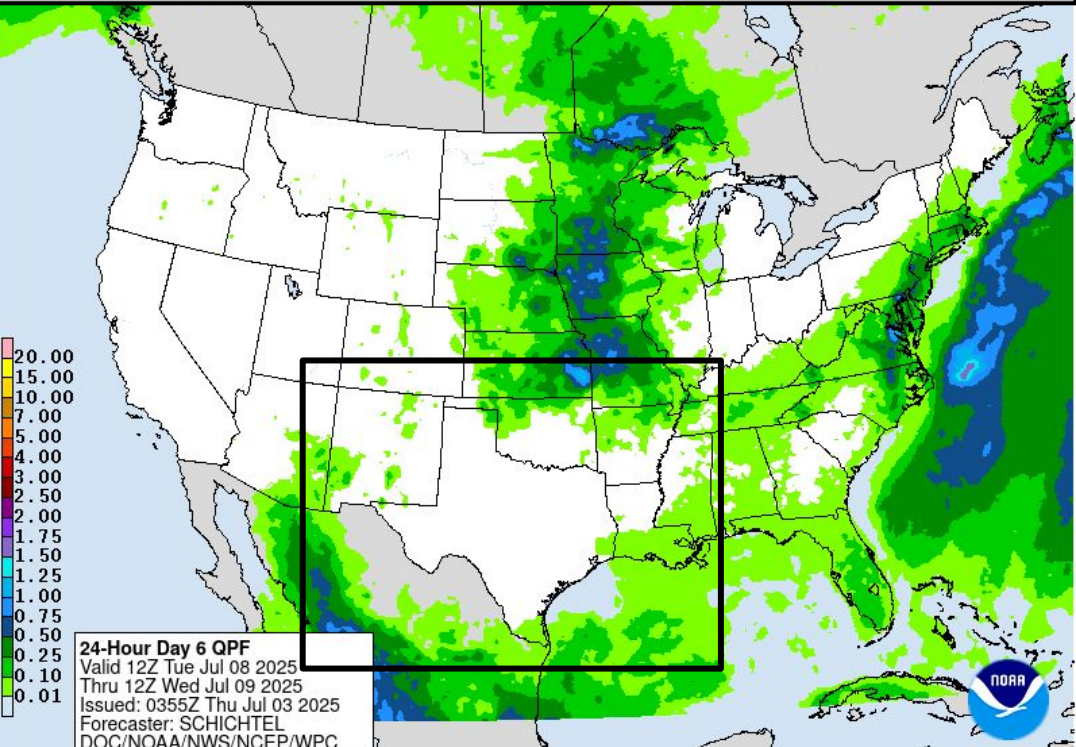


Tuesday's Weather

Forecast Chart

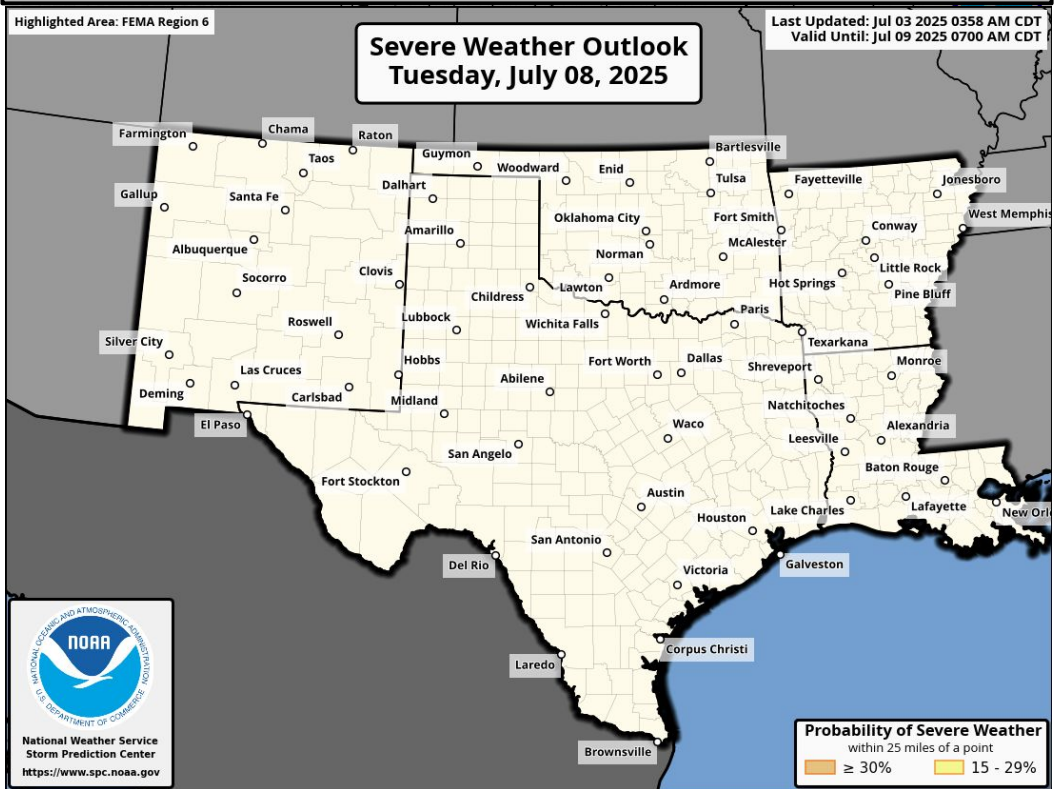


Forecast Rainfall



No significant weather expected.

Severe Weather Outlook

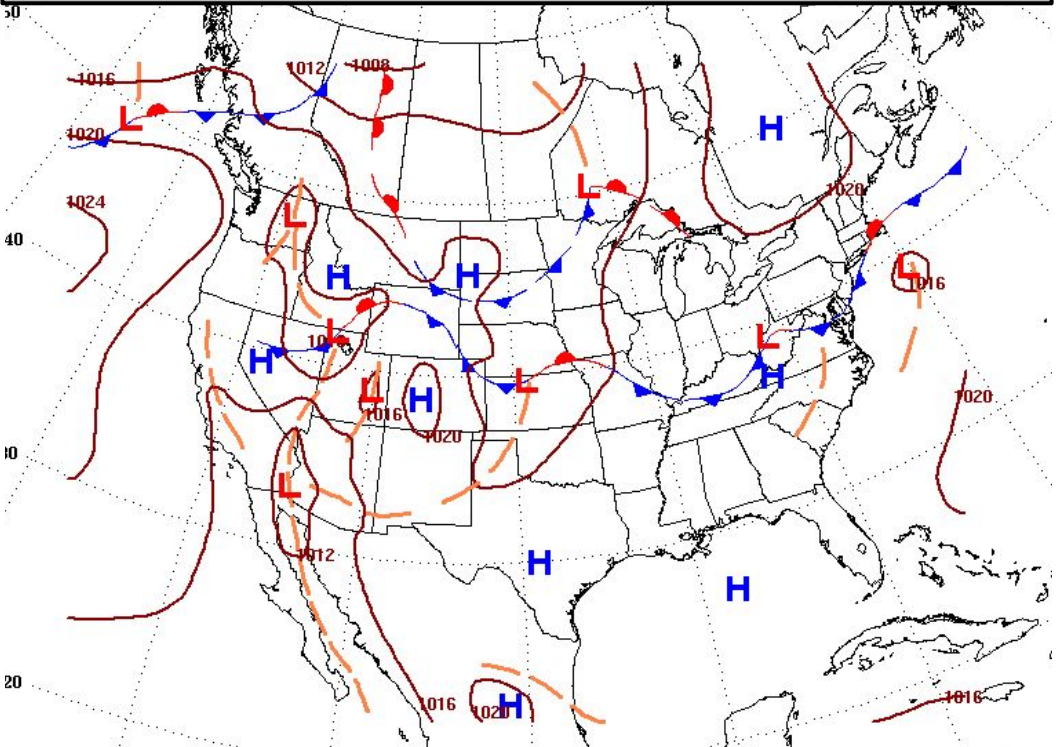


Excessive Rainfall Outlooks
not available beyond Day 5

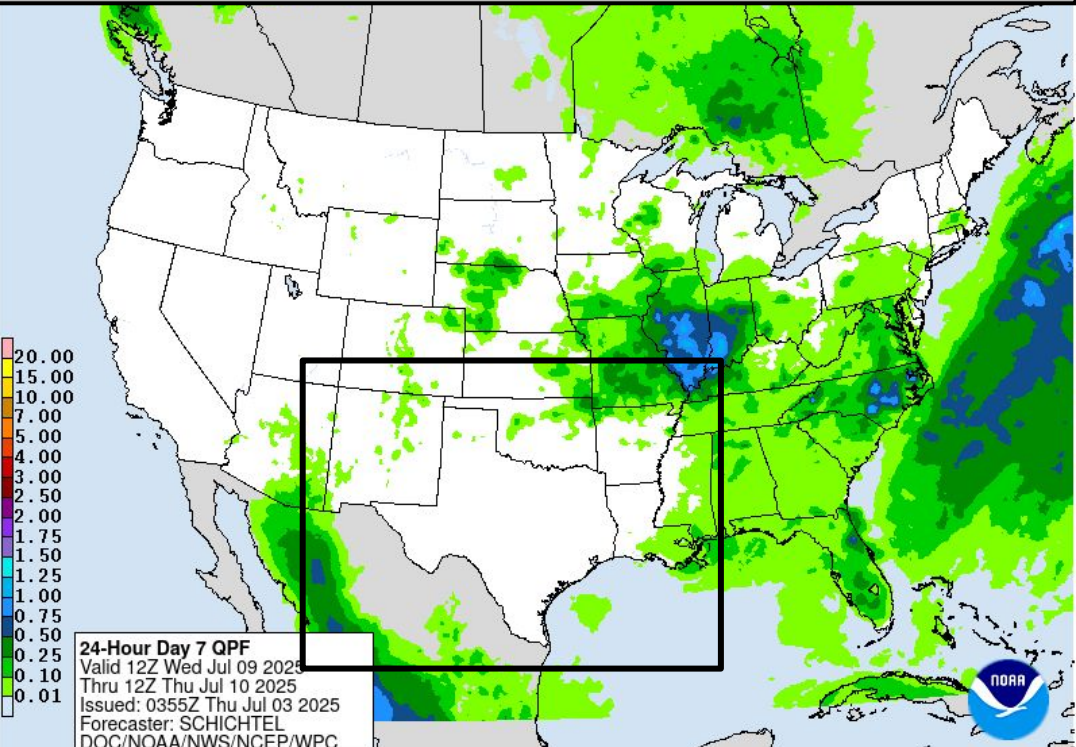


Wednesday's Weather

Forecast Chart

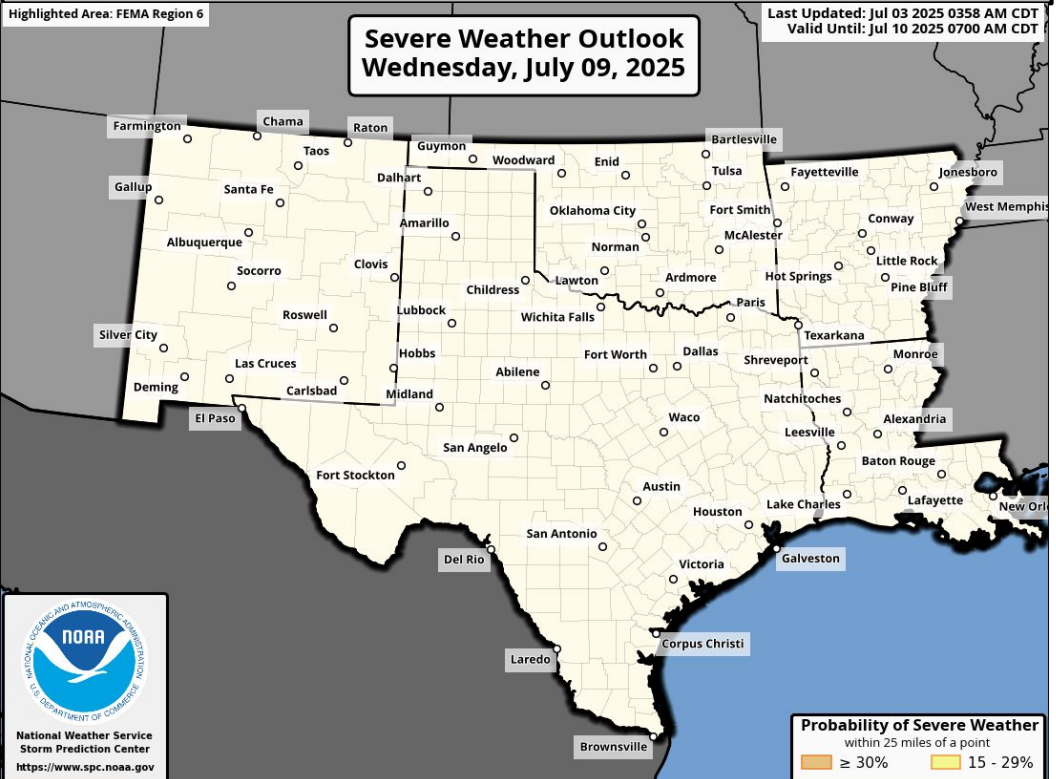


Forecast Rainfall



No significant weather expected.

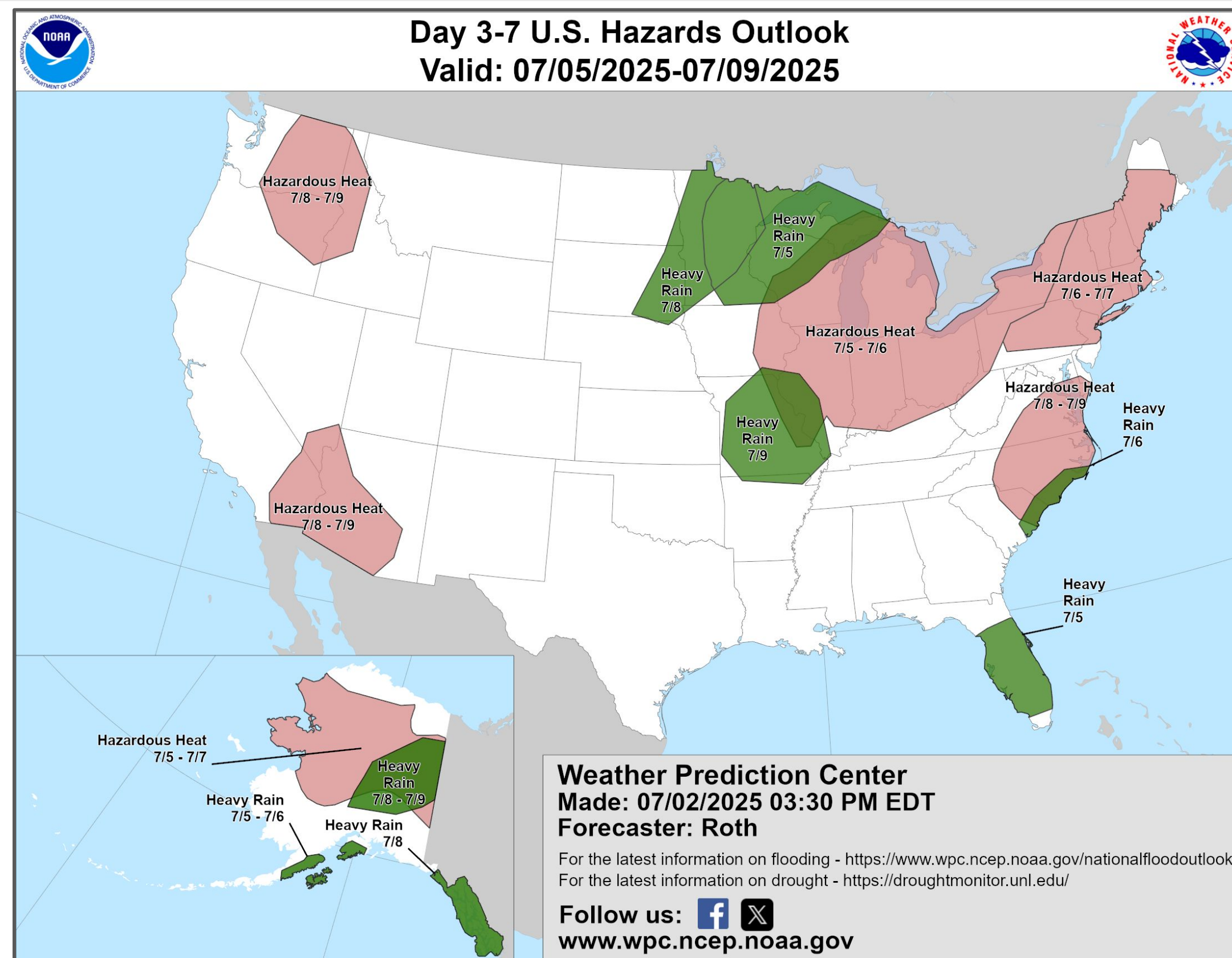
Severe Weather Outlook



Excessive Rainfall Outlooks
not available beyond Day 5



“Day 3-7” Hazards Outlook



NOTE: These outlooks are issued in the afternoon and only issued on weekdays. Because of that and the fact that these slides are issued in the mornings:

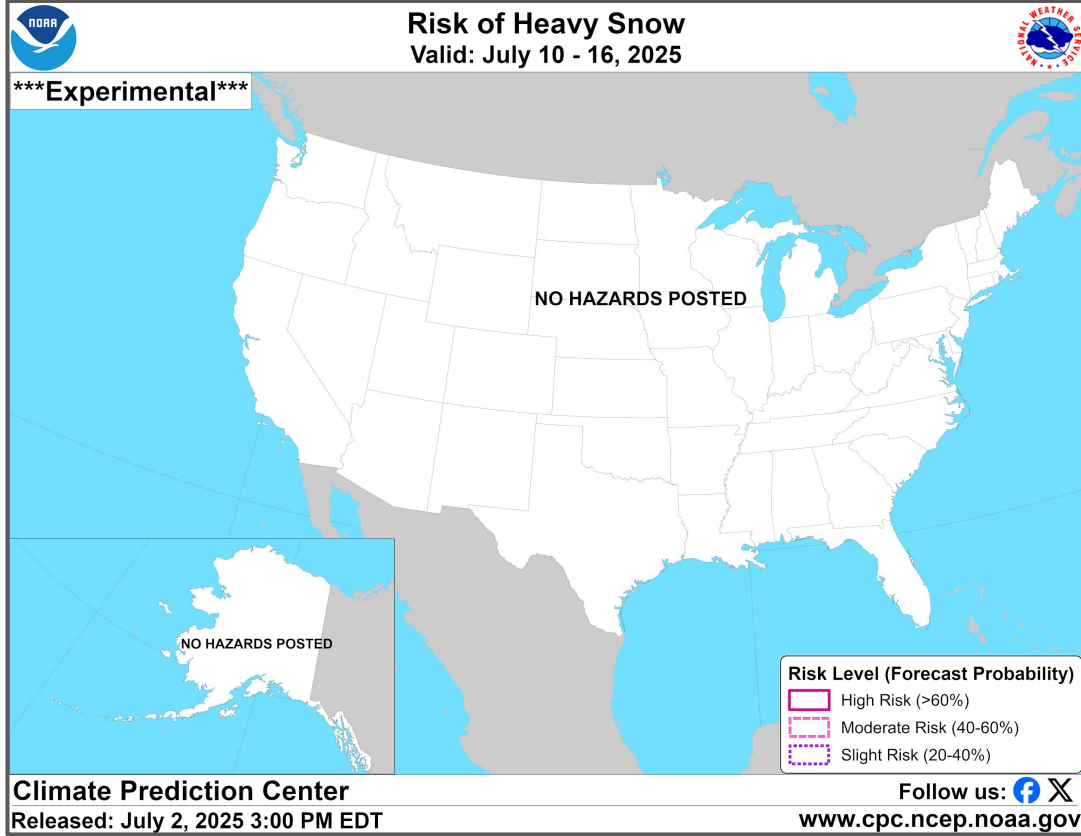
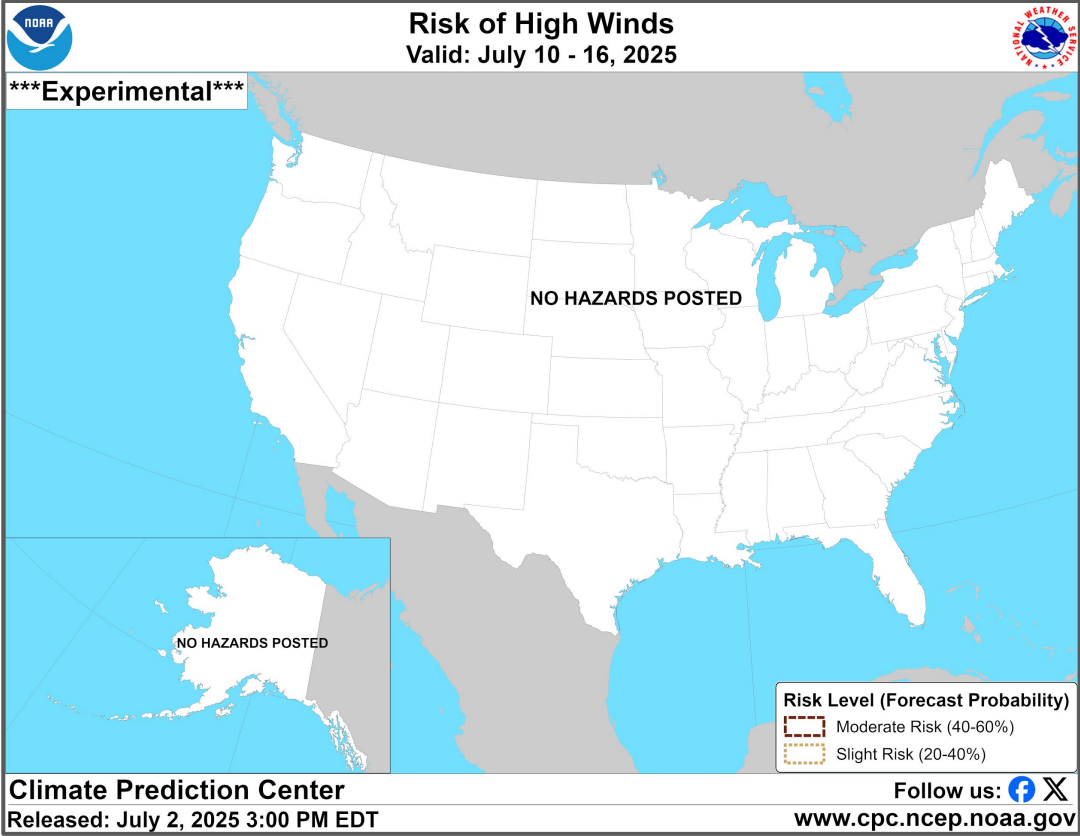
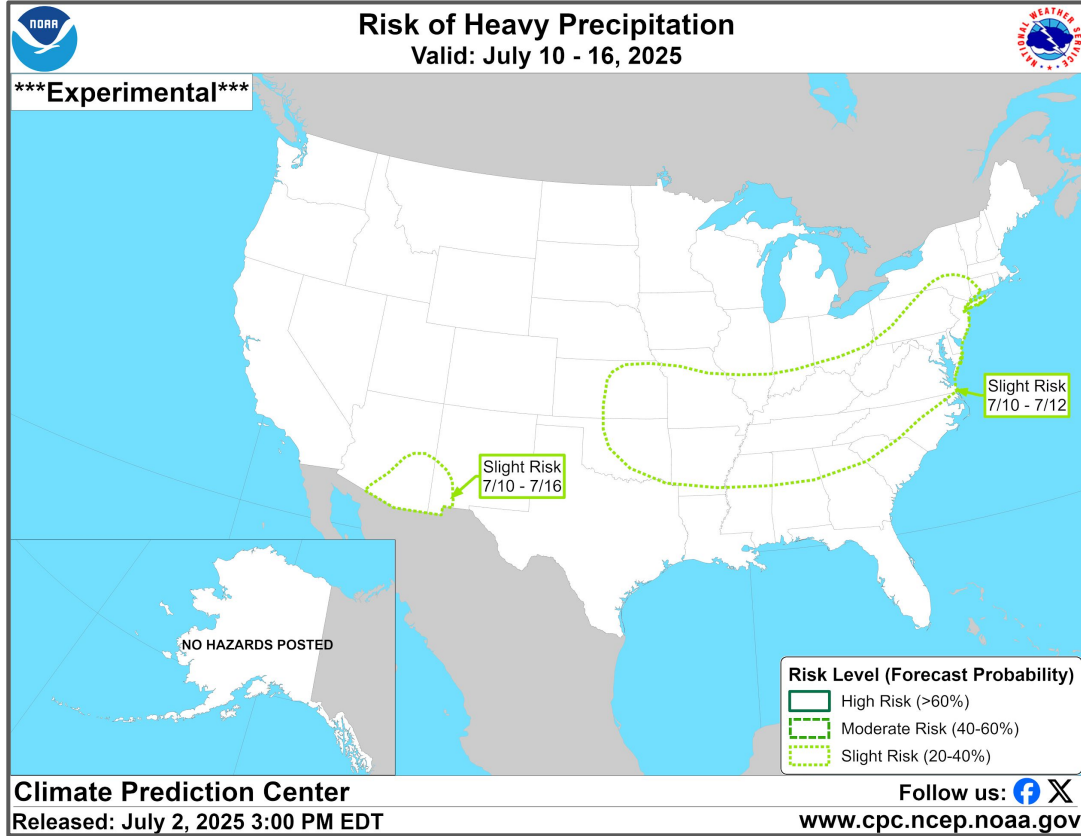
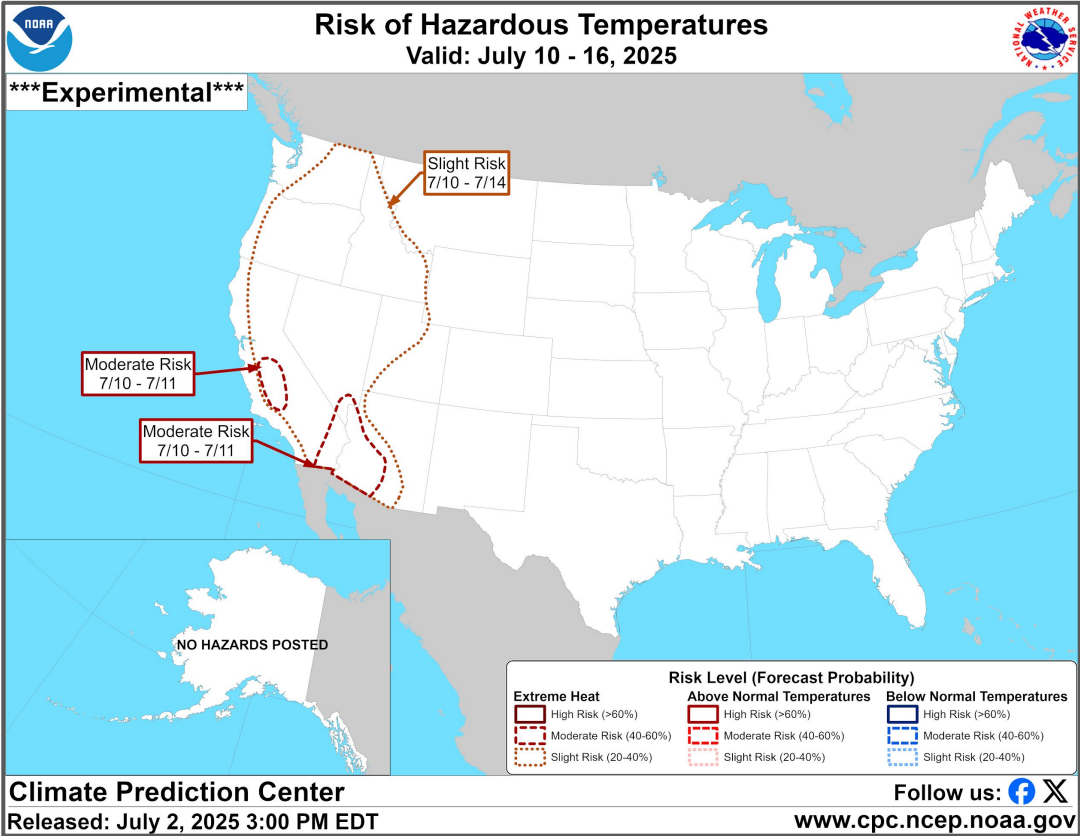
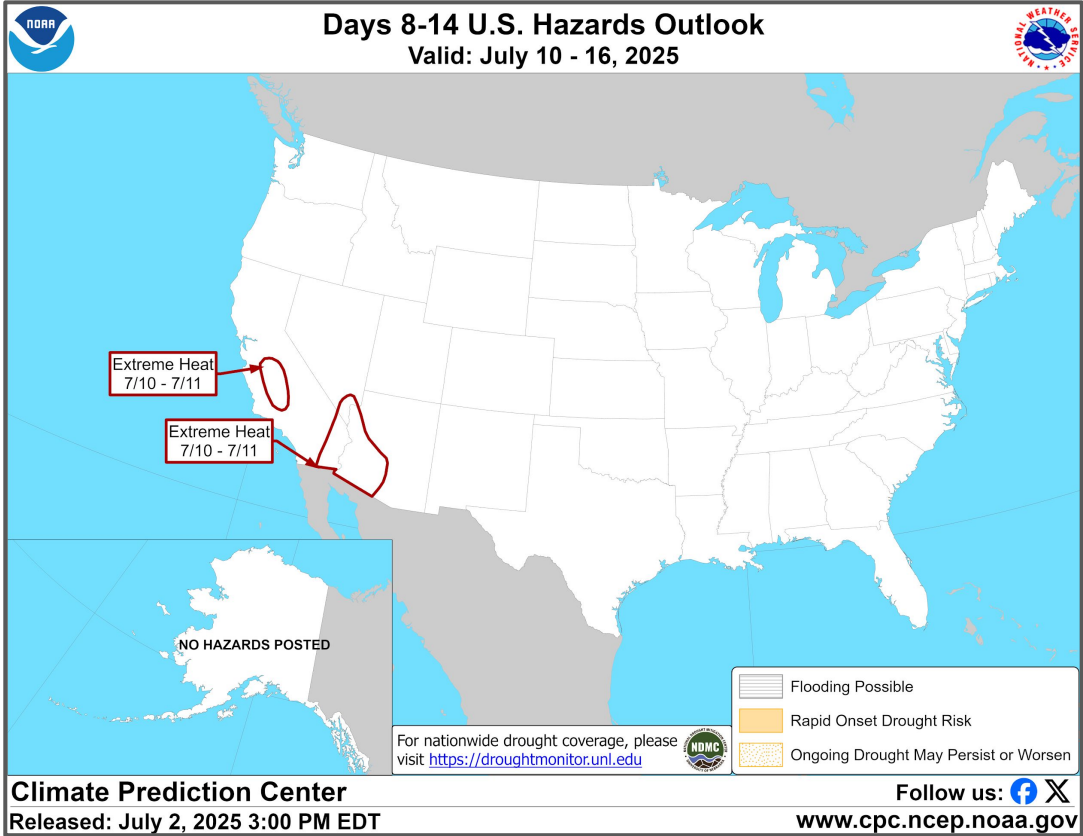
1. The “day 3-7” will really be days 2-6
2. This slide will be hidden on Mondays and Sundays so the data/information is not too old

For additional information on this outlook go to <https://www.wpc.ncep.noaa.gov/threats/threats.php>





“Day 8-14” Hazards Outlook



NOTE: These outlooks are issued in the afternoon and only issued on weekdays. Because of that and the fact that these slides are issued in the mornings:

1. The “day 8-14” will really be days 7-13
2. This slide will be hidden on Mondays and Sundays so the data/information is not too old

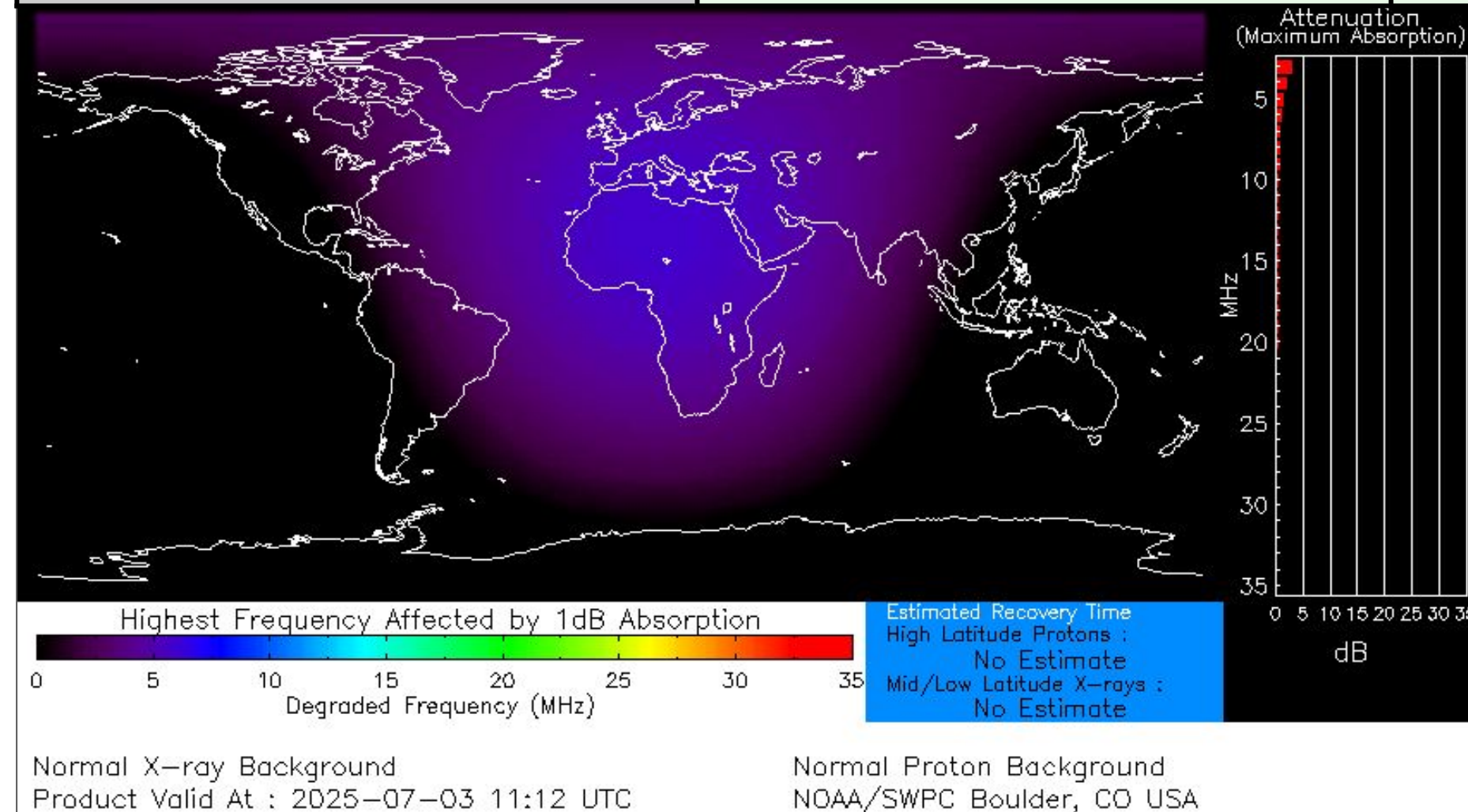
For additional information on this outlook go to <https://www.cpc.ncep.noaa.gov/products/predictions/threats/threats.php>





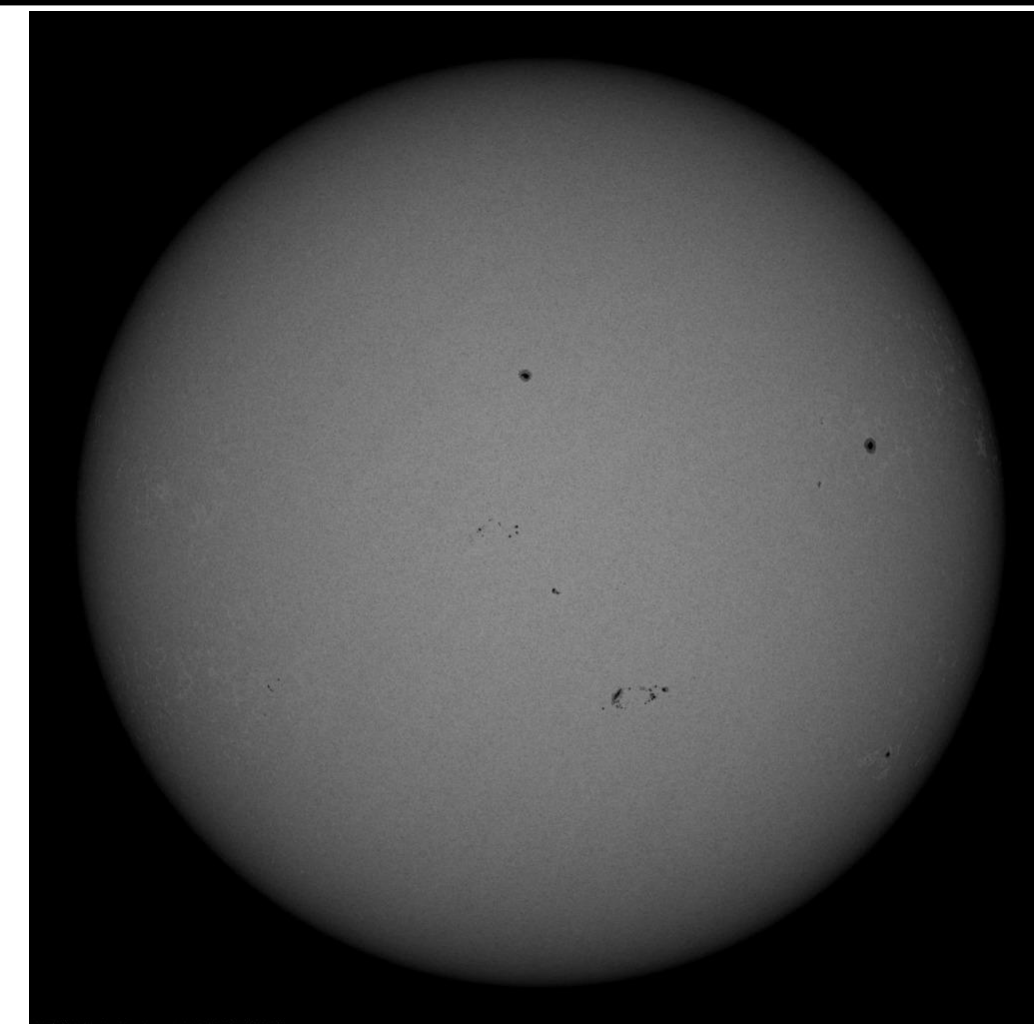
Space Weather 3-Day Forecast

	Thursday, Jul 3	Friday, Jul 4	Saturday, Jul 5
Geomagnetic Storms	Active (Max Kp = 4)	Unsettled (Max Kp = 3)	Unsettled (Max Kp = 3)
Solar Radiation Storm (S1-S5)	1%	1%	1%
Radio Blackout (R1-R2)	15%	15%	15%
Radio Blackout (R3-R5)	1%	1%	1%



[Description of the Space Weather Storm Scales](#)

[Latest 3-Day Space Weather Forecast](#)



Weather “Threat” Matrix for FEMA Region VI

Color	Definition	Criteria	Example(s)
Green	Little to None Safety: Rarely a Direct Threat to Life and Property Impact Potential: Typically Results in Little Inconvenience to Daily Routines	Severe: Marginal Risk from SPC Flooding: Minor flooding expected over localized areas Tropical: None Fire Weather: No Watches/Warnings, fuel moisture above 10% or green up active	<ul style="list-style-type: none"> Thunderstorms expected over LA this afternoon; a few may produce winds to knock down a few trees Something that happens almost every day in a particular season such as seabreeze storms in coastal TX
Yellow	Minor Safety: Rarely a Direct Threat to Life and Property Impact Potential: Typically Results in Some Inconvenience to Daily Life	Severe: Slight Risk from SPC Flooding: Nuisance flooded expected for a widespread area, or Minor flooding expected over isolated areas Tropical: A weak tropical wave expected to move towards or near any coastline Fire Weather: Red Flag Watches/Warnings and/or SPC outlines enhanced or critical fire outlook	<ul style="list-style-type: none"> 2-3 inches of rainfall expected over central AR today and tonight; some minor (brief) street flooding possible Scattered severe storms possible, one or two tornadoes expected, along with reports of strong winds/wind damage and ~1” hail
Orange	Moderate Safety: Often Threatening to Life and Property, Some Damage Unavoidable Impact Potential: Typically Results in Minor Disruption to Daily Life	Severe: Enhanced Risk from SPC Flooding: Minor flooding expected over a widespread area (including urban locations), or Moderate flooding expected over isolated areas Tropical: A Tropical Storm expected to move towards or near any coastline Fire: Critical fire outlook for more than 2 consecutive days, Warnings for 2 or more consecutive days, D3-D4 drought conditions	<ul style="list-style-type: none"> A snow/sleet mix is expected to move through or near the DFW area tomorrow morning; travel impacts likely Numerous severe storms possible, a few tornadoes possible along with several reports of wind damage along with damaging hail Some large fires reported, burn bans advertised, critical conditions expected
Red	Major Safety: Extensive Property Damage Likely, Life Saving Actions Also will be Needed Impact Potential: Will likely result in Large Disruption to Daily Life	Severe: Moderate Risk from SPC Flooding: Moderate flooding expected over a widespread area (including urban locations) Tropical: A Hurricane expected to move towards or near any coastline Fire: Large areas of critical conditions for 2 or more days, Warnings for 3 or more days, Severe to extreme drought	<ul style="list-style-type: none"> A Category 1 hurricane will be moving towards the NW Gulf in the next few days Widespread severe storms likely, strong tornadoes, widespread wind damage, and destructive hail Large fires ongoing throughout the area with critical fire weather conditions expected to continue
Purple	Extreme Safety: Property Damage Unavoidable, Immediate Action to Save Life will be Needed Impact Potential: Typically Results in Long-Lived Widespread Major Disruption to Daily Life	Severe: High Risk from SPC Flooding: Major flooding expected over a widespread area (including urban locations) Tropical: A Major Hurricane (Cat3 or greater) expected to move towards or near any coastline Fire: Large area of critical conditions for 2 or more days, Warnings for 3 or more days, Long term (months) of severe to extreme drought	<ul style="list-style-type: none"> A Category 4 hurricane is headed towards the SE LA; major storm surge, flooding and damaging winds anticipated to begin tomorrow Widespread severe storms expected, tornado outbreak probable with long-lived, very widespread and particularly intense storms

Criteria for the color codes in this briefing is to the left, please provide any feedback to
sr-srh.roc@noaa.gov



National Weather Service

Southern Region Headquarters

Regional Operations Center

Fort Worth, TX



Phone: (682) 703-3747



Facebook: NWSSouthern



E-mail: sr-srh.roc@noaa.gov



X: NWSSouthern

WWW

Web: www.weather.gov/srh

