



FEMA



Prepared by
Mark Wiley

FEMA Region 6 Weather Threat Briefing

Monday, July 07, 2025

Disclaimer: The purpose of this briefing is to provide a **Regional** weather threat assessment and is meant as a general overview. County/Parish decision makers should consult their local NWS forecast offices for the latest detailed, local weather information. To find your local NWS forecast office, go to www.weather.gov/srh.



National Oceanic and
Atmospheric Administration
U.S. Department of Commerce

National Weather Service
Southern Region



Summary

- **Flash Flooding:** Slight risk (level 2 of 4) continues over SW, Cntrl TX today with locally higher threat if rainfall occurs over already saturated grounds. Pockets of 2-4” are the high end today, Moderate to Major risk (levels 2-3 of 4) over the NM burn scar areas today through Tuesday.
- **River Flooding:** Rivers have dropped back to minor, but with more heavy rain anticipated today, quick responses will occur where the ground is saturated.
- **Tropical:** TD Chantal continues to weaken and will have no impacts to FEMA 6. No tropical impacts expected over the next 7 days.





FEMA Region 6 Threat Matrix

Next 7 days

	Monday, Jul 7	Tuesday, Jul 8	Wednesday, Jul 9	Thursday, Jul 10	Friday, Jul 11	Saturday, Jul 12	Sunday, Jul 13
Severe Storms	NE NM,TX/OK Panhandles	OK,TX Panhandle, NE NM, NTX					
Heavy Rain / Flash Flooding	Cntrl/SW TX	NM, E OK, AR	S AR, N LA, ETX		TX/OK Panhandles, W OK, NW TX		
Burn Scars		NM		NM			
	S NM		S NM				
Tropical							
Heat							
River Flooding	CTX	CTX	CTX				

Threat levels are based on FEMA Region 6 criteria. State or local threat level criteria may differ.
For more details on the colors in the threat matrix refer to the last slide in this briefing.

Risk Levels	Little to None	Minor	Moderate	Major	Extreme
-------------	----------------	-------	----------	-------	---------



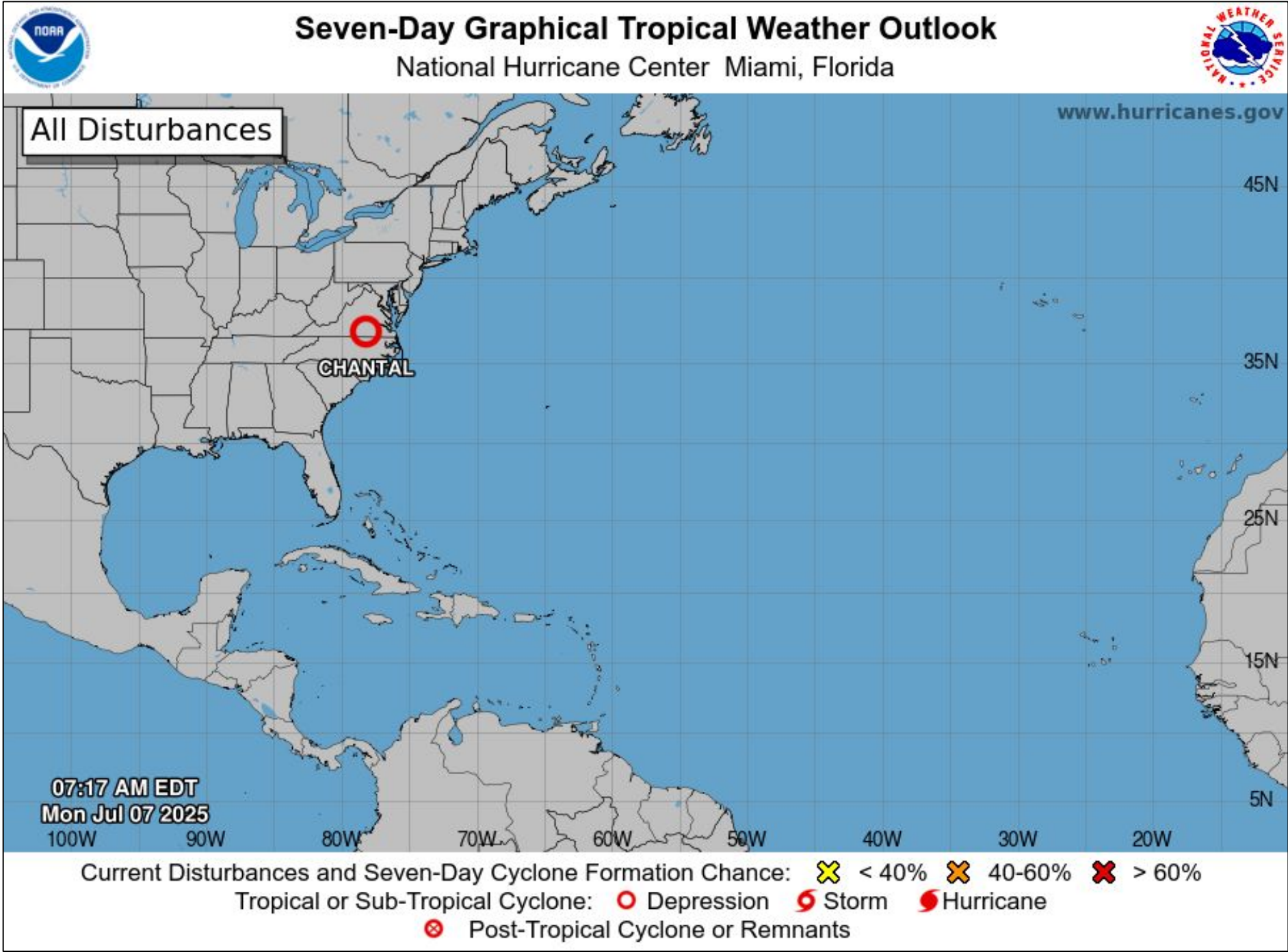
Tropical Weather Outlook – Atlantic/Gulf

Areas of Possible Development

Area	Chance of Development	Potential Impacts to FEMA 6

Active Tropical Cyclones

Storm	Potential Impacts to FEMA 6
Chantal	No impacts to FEMA 6.



See <http://www.hurricanes.gov> for the latest on the tropics or any active storms

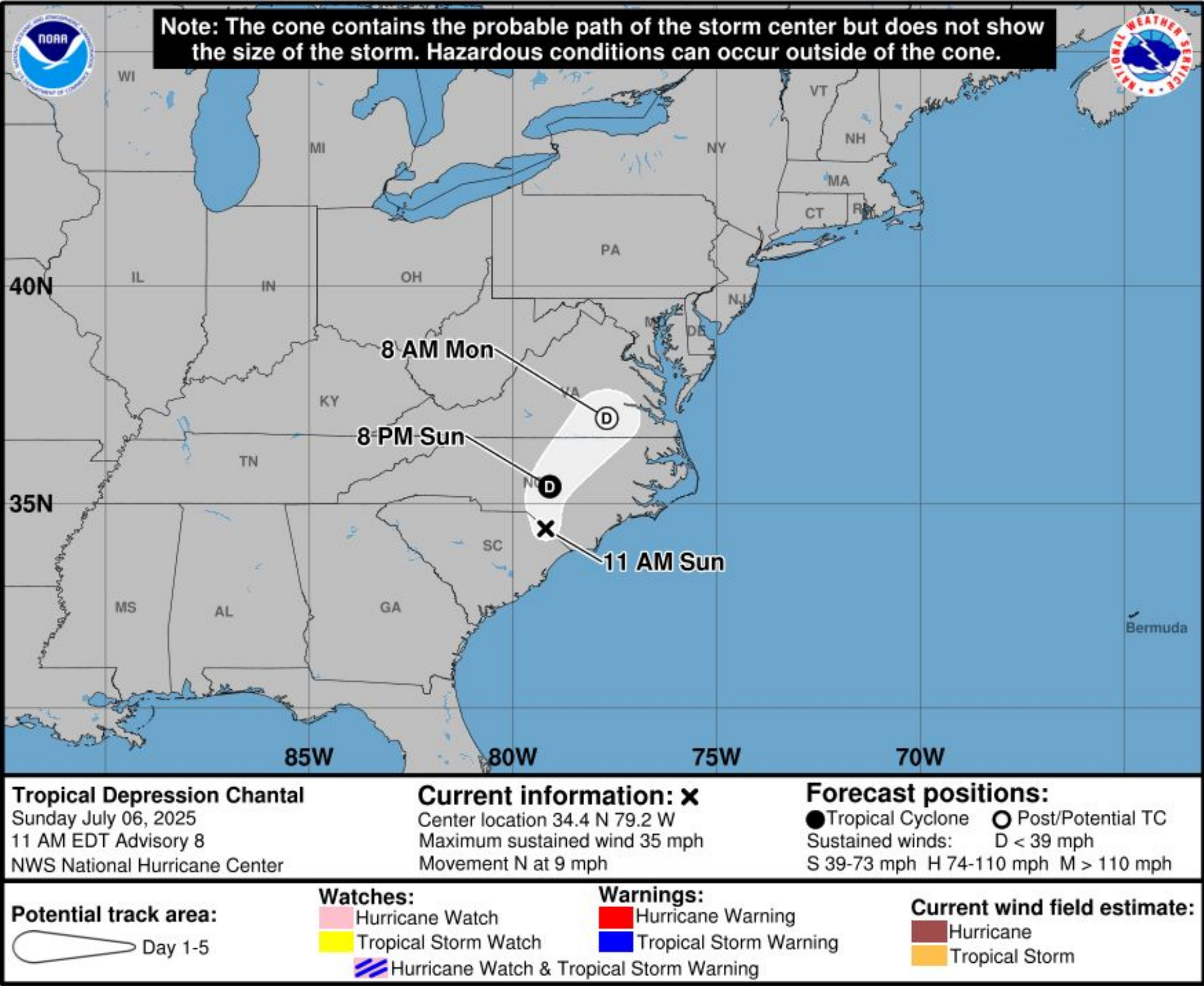




Chantal

July 7, 2025
2:31 PM

See <http://www.hurricanes.gov> for the latest on the tropics or any active storms



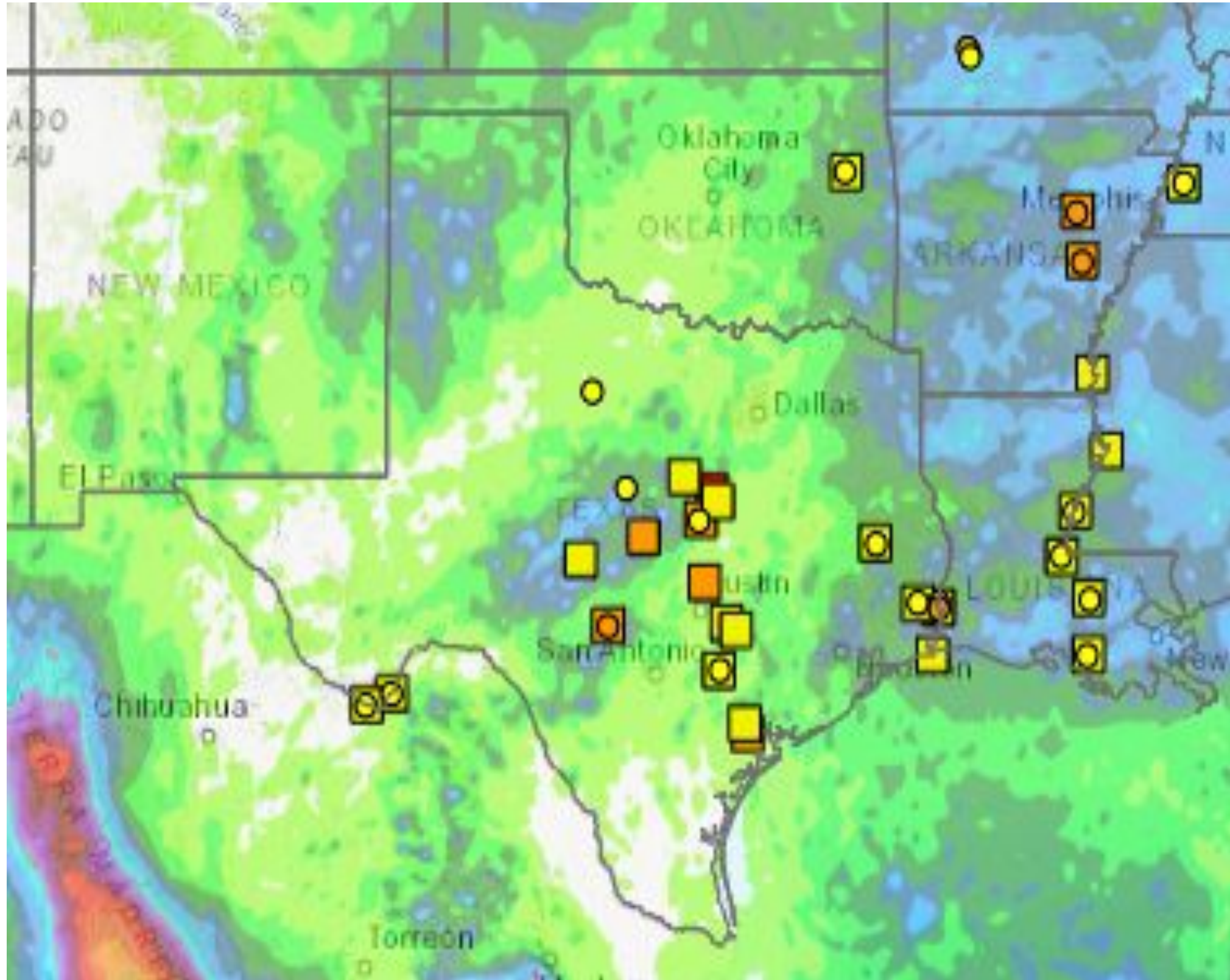
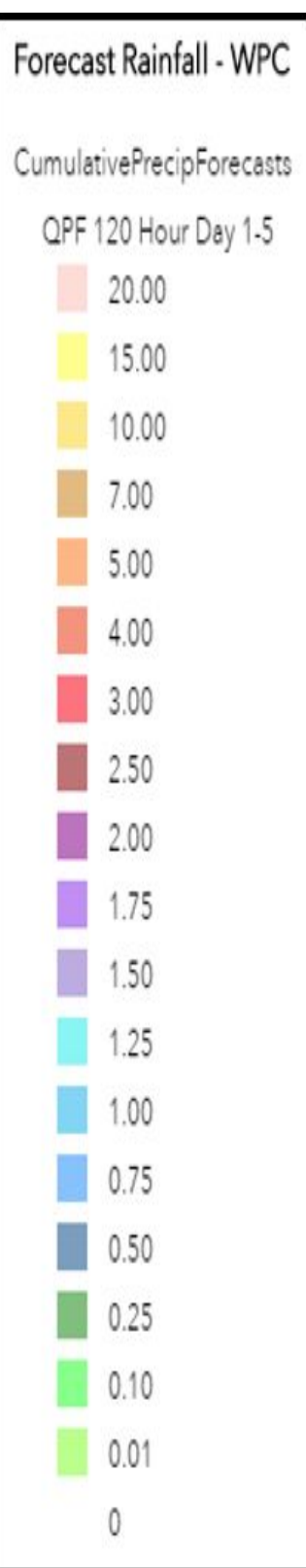
**Tropical Storm Chantal made landfall
in SC. No impacts to FEMA 6.**





5-Day Precipitation Forecast & River Flood Status

Note: Even though the image displays 5 days of forecasted rainfall, river forecasts only include 1-2 days of rainfall



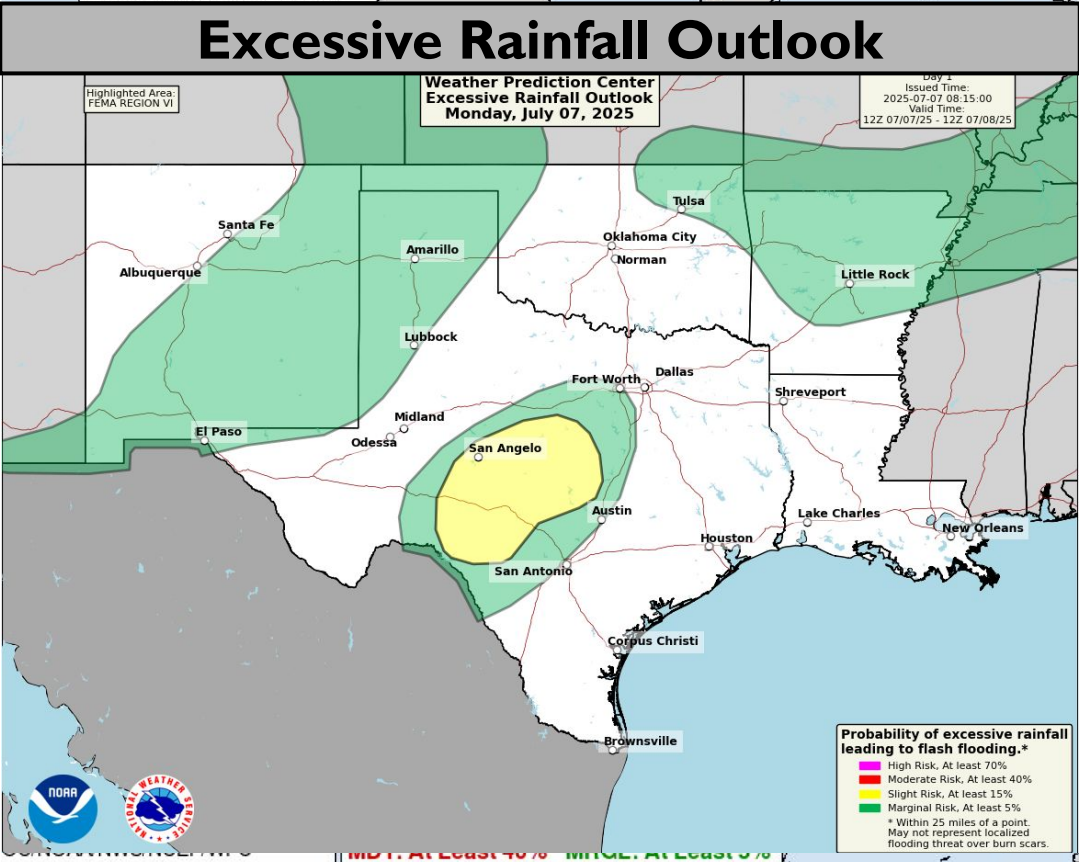
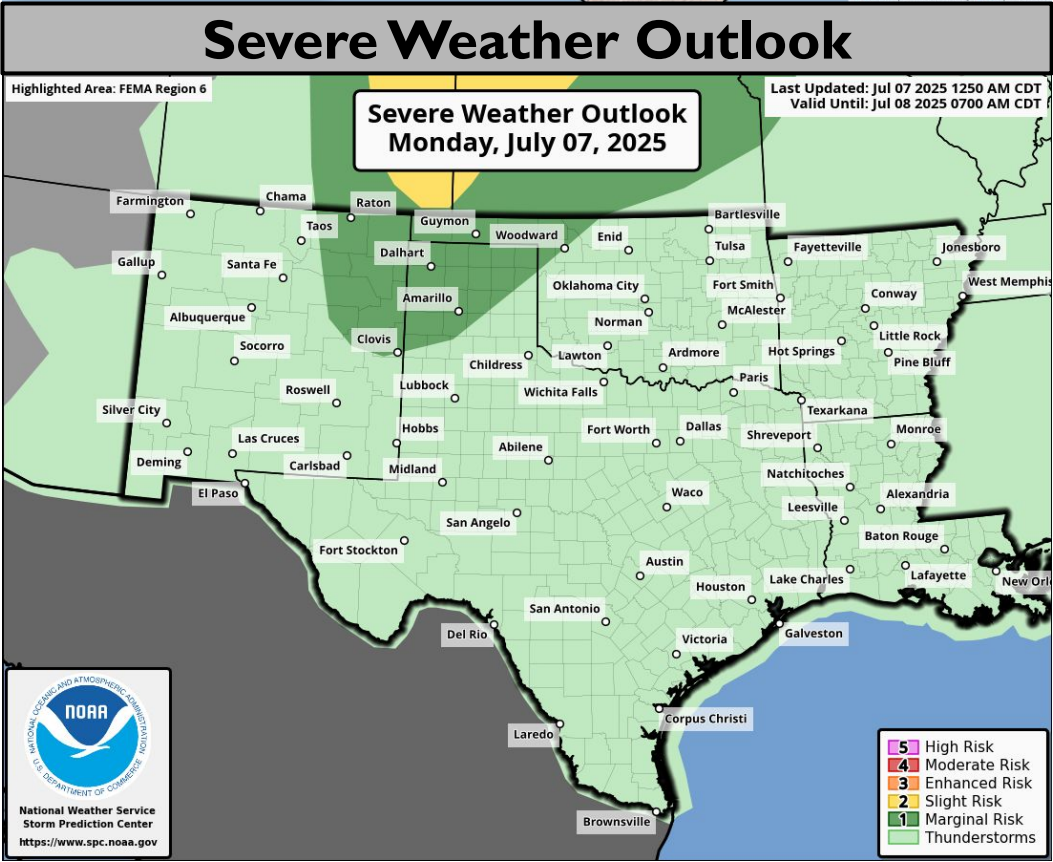
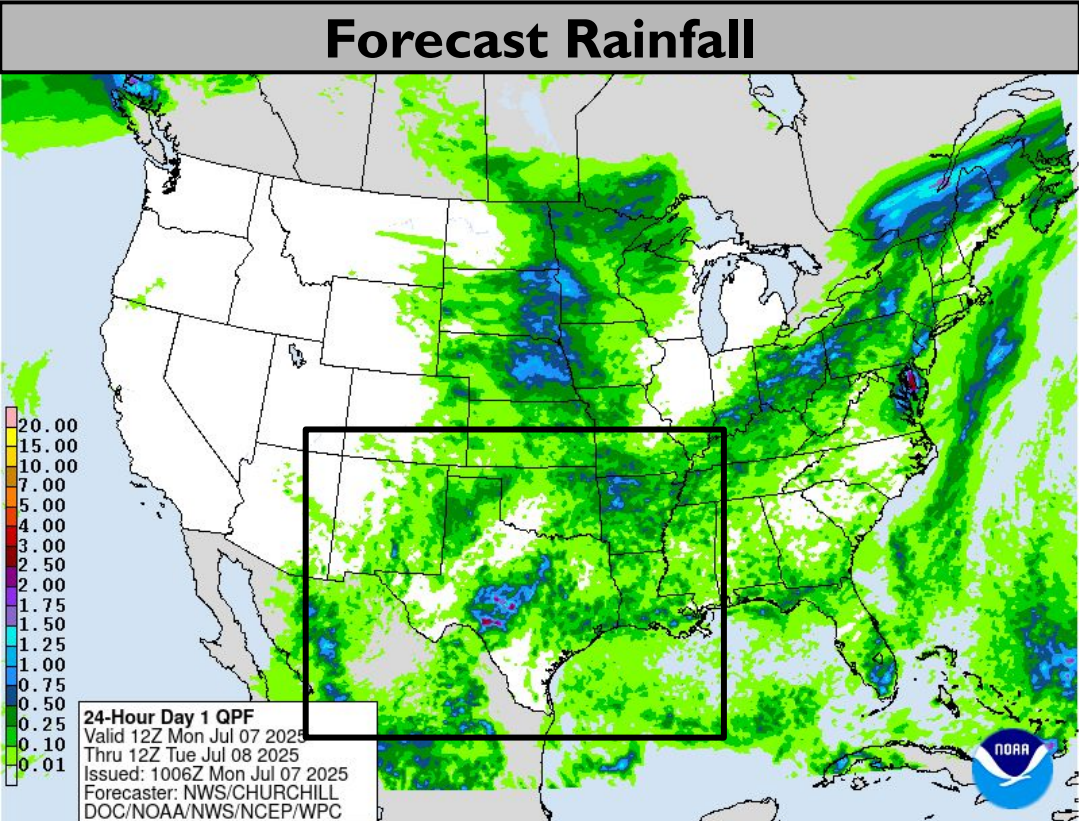
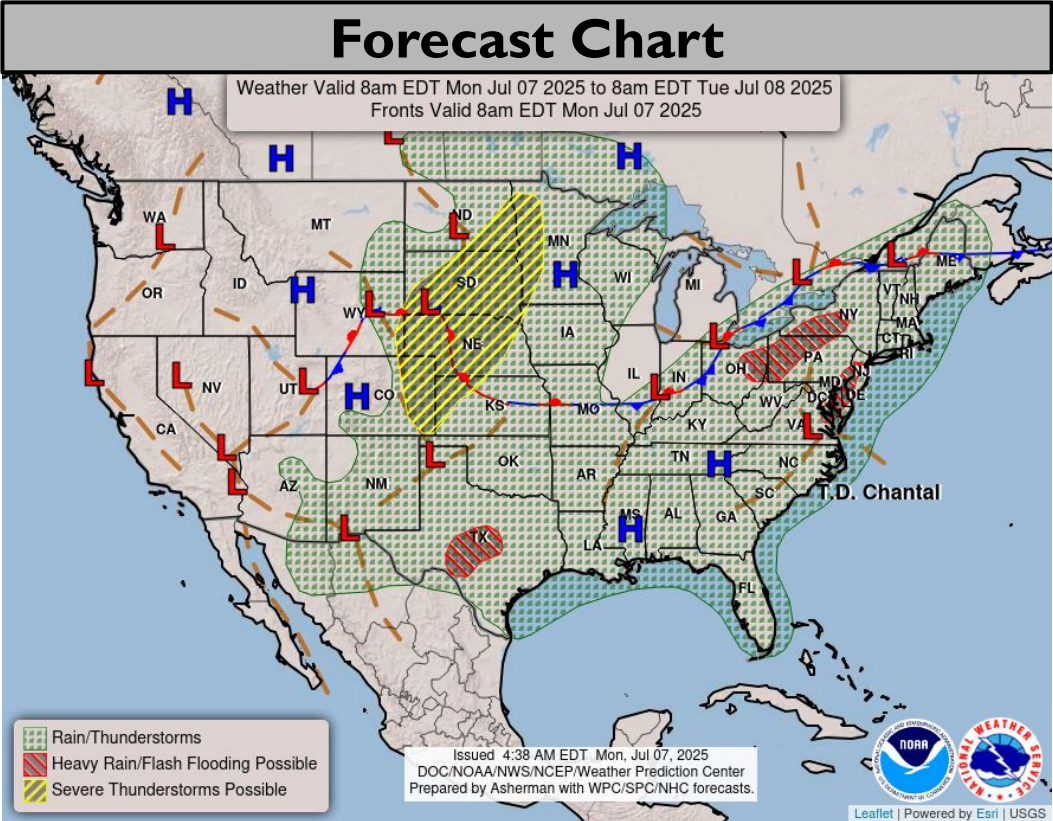
Rivers in TX have dropped back to minor, but heavy rainfall could produce quick rises where ground is saturated.

Note: Numerical levels (e.g. level 1 of 4) will not be assigned to riverine flooding due to the varying levels of impacts across flood categories.





Today's Weather



Slight risk (level 2 of 4) of flash flooding in Cntrl/SW TX

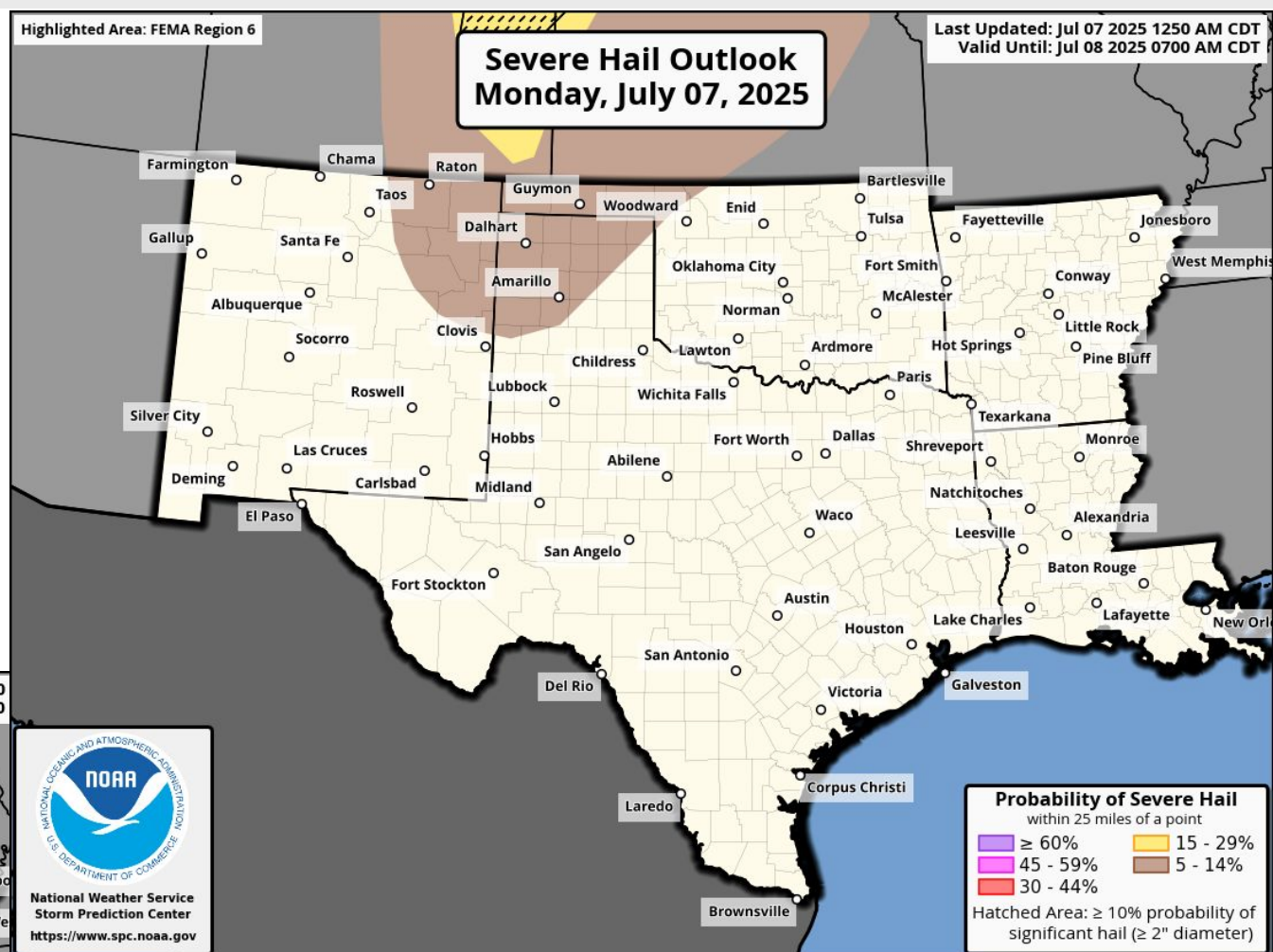
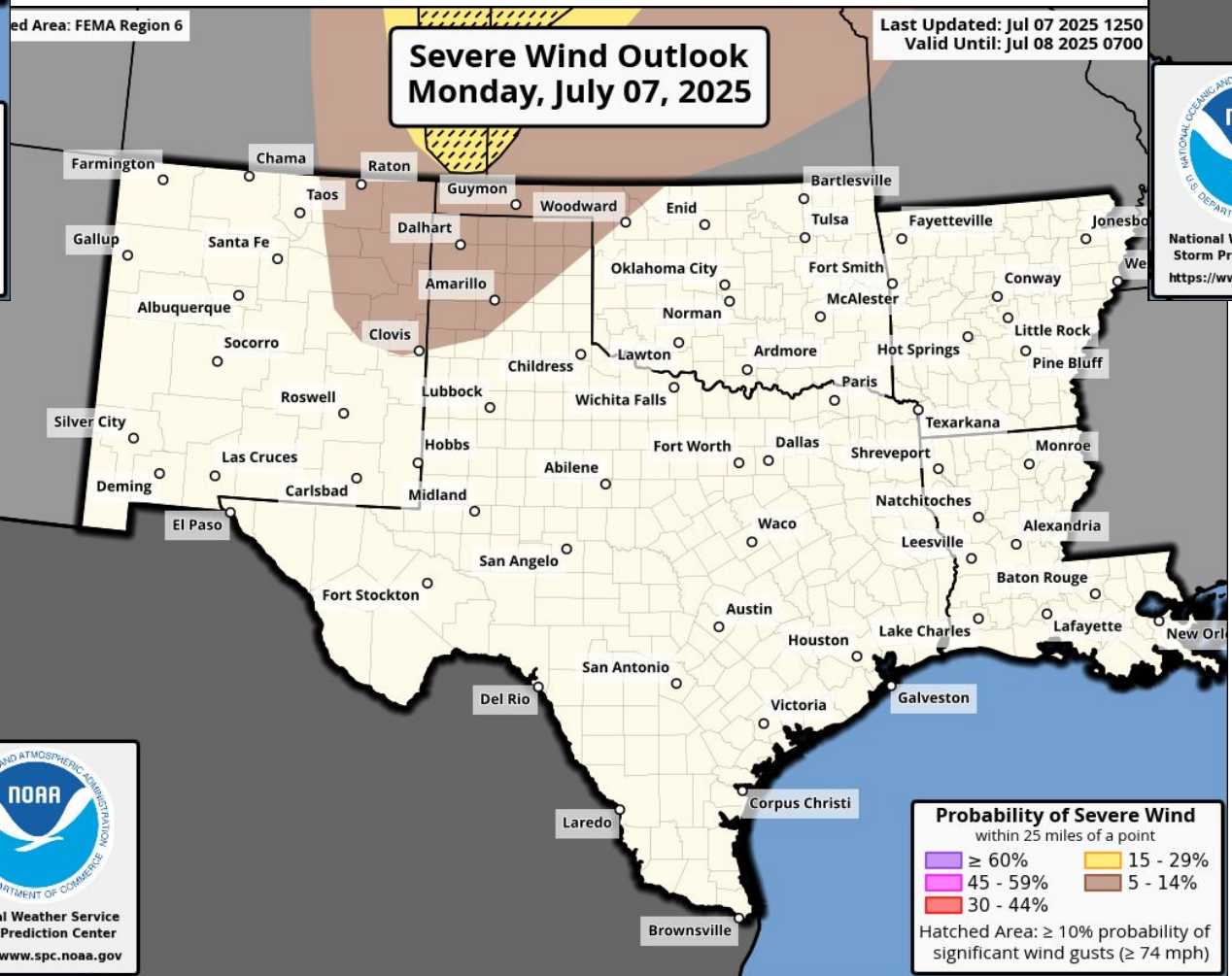
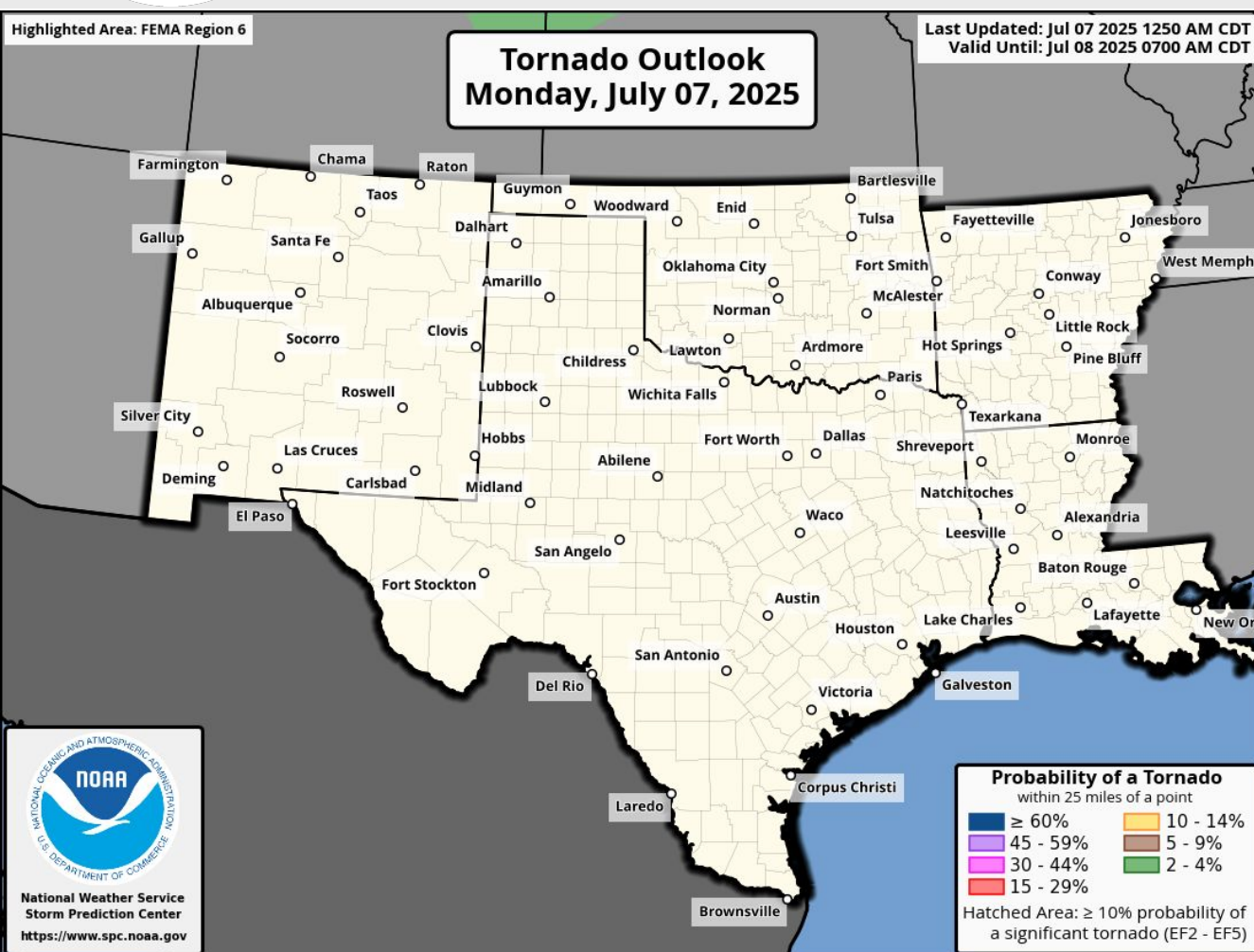
Marginal risk for severe storms (level 1 of 5) over NE NM, TX/OK Panhandles.

****Burn Scar Flash Flooding information on Burn Scar Matrix slides****





Today's Tornado & Severe Wind / Hail Probabilities

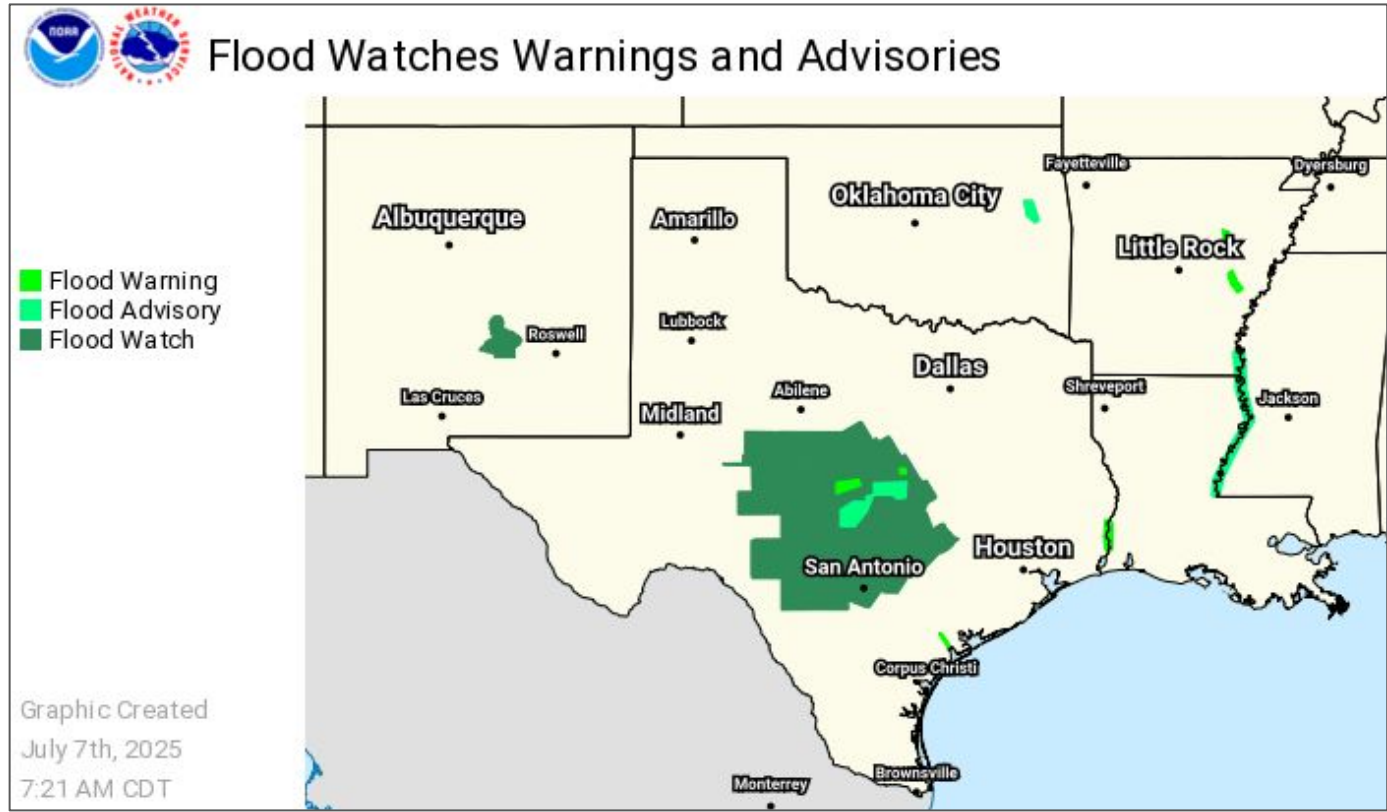
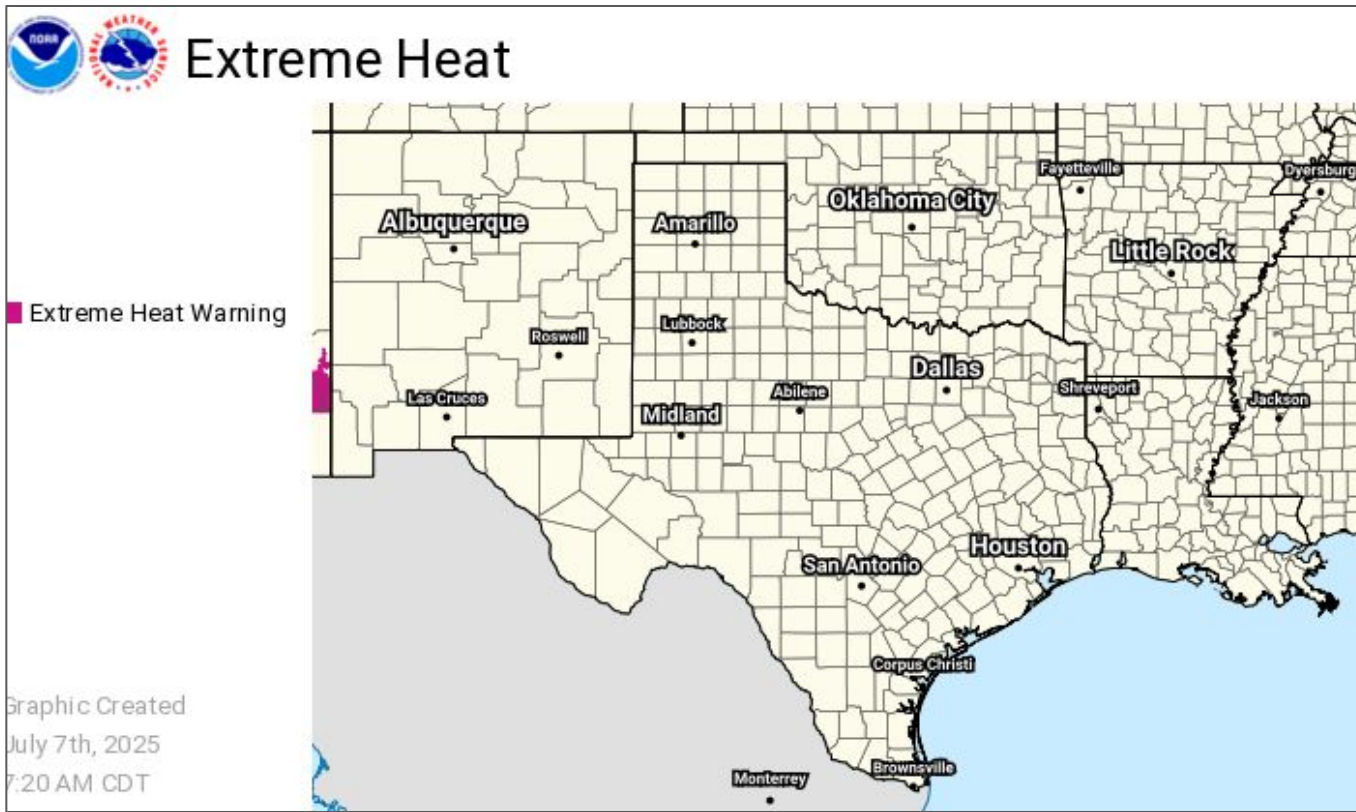
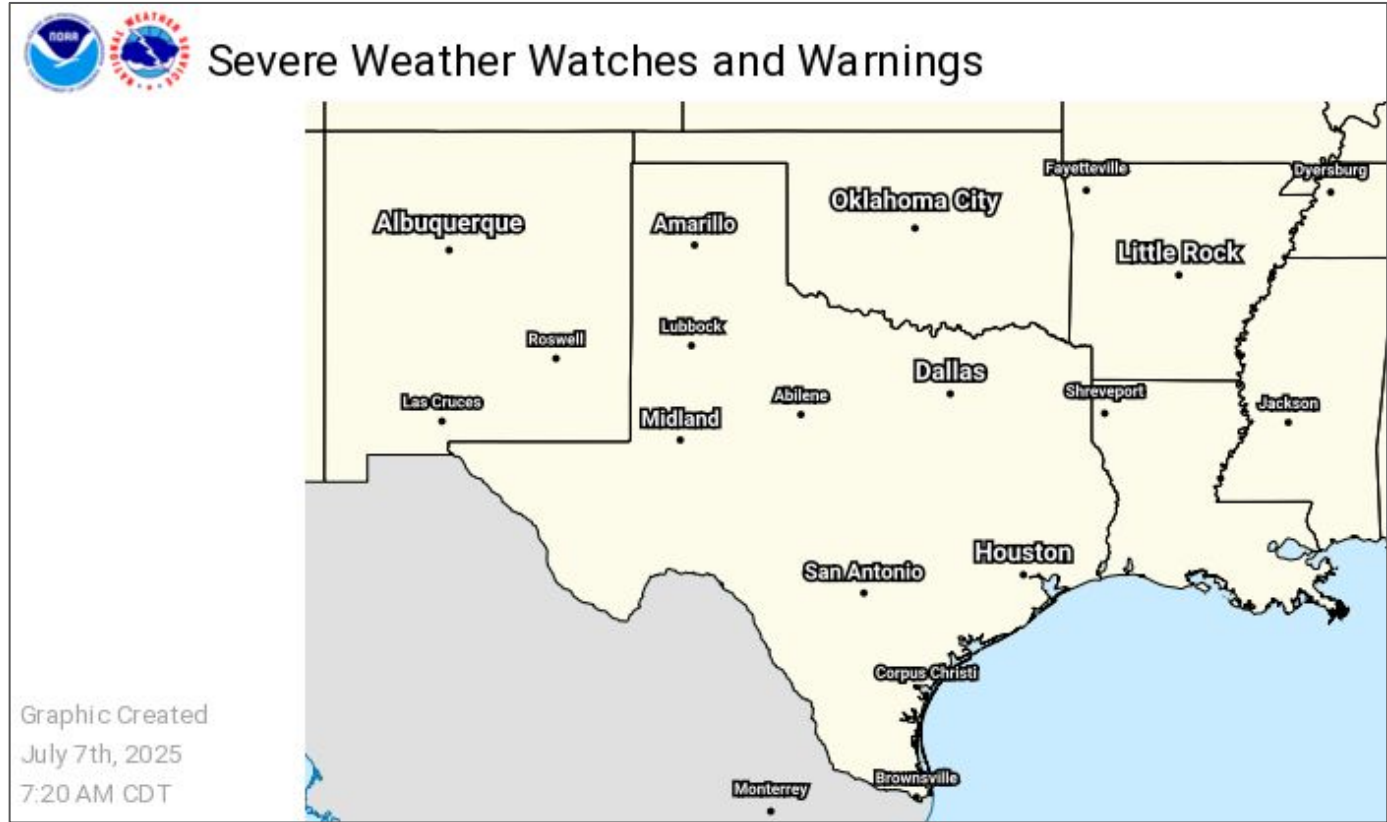




Watches, Warnings, and Advisories

Wind, Severe, Heat, and Flood Hazards

**Flood Watch Cntrl TX
through 7 pm.**

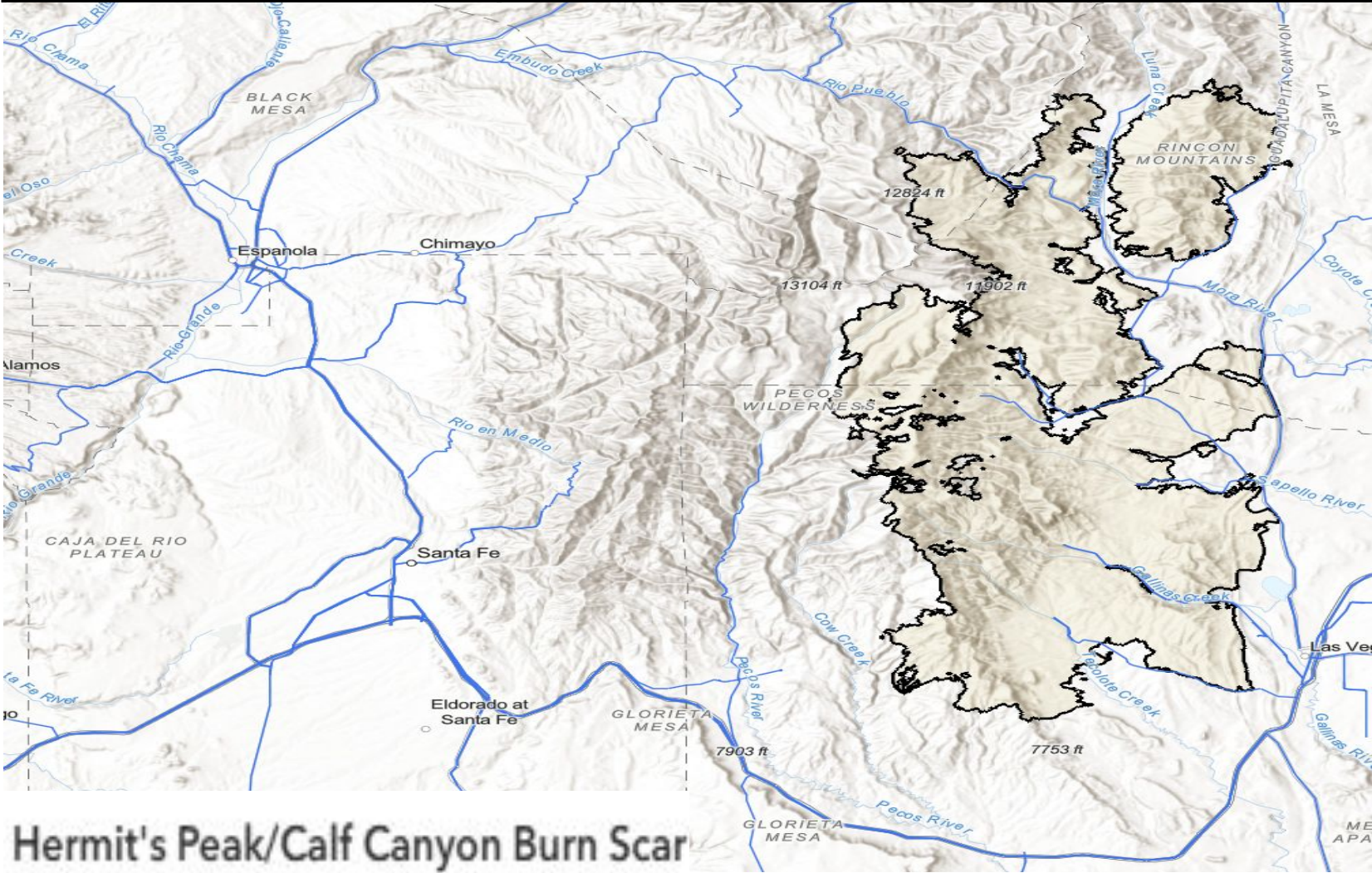




Burn Scar Debris Flow Risk - HPCC Scars New Mexico

Hermit's Peak/Calf Canyon Burn Scar

	Monday, Jul 7	Tuesday, Jul 8	Wednesday, Jul 9	Thursday, Jul 10
Flash Flooding	Moderate	Moderate	Slight	Slight
Timing - CDT	1-10 pm	1-10 pm	Afternoon	Afternoon



Hermit's Peak/Calf Canyon Burn Scar

Little to None	No Flash Flood Threat
Minor (level 1 of 4)	Slight Risk of Flash Flooding
Moderate (level 2 of 4)	Probability of Flash Flooding Issuance 40% to 60%
Major (level 3 of 4)	Flood Watch Issued OR Debris Flow Probability > 50%
Extreme (level 4 of 4)	Life Threatening Flash Flooding Likely - Historic Type Day
<ul style="list-style-type: none">WPC's Excessive Rainfall Outlook is <i>Not Applicable</i> to burn scars.	

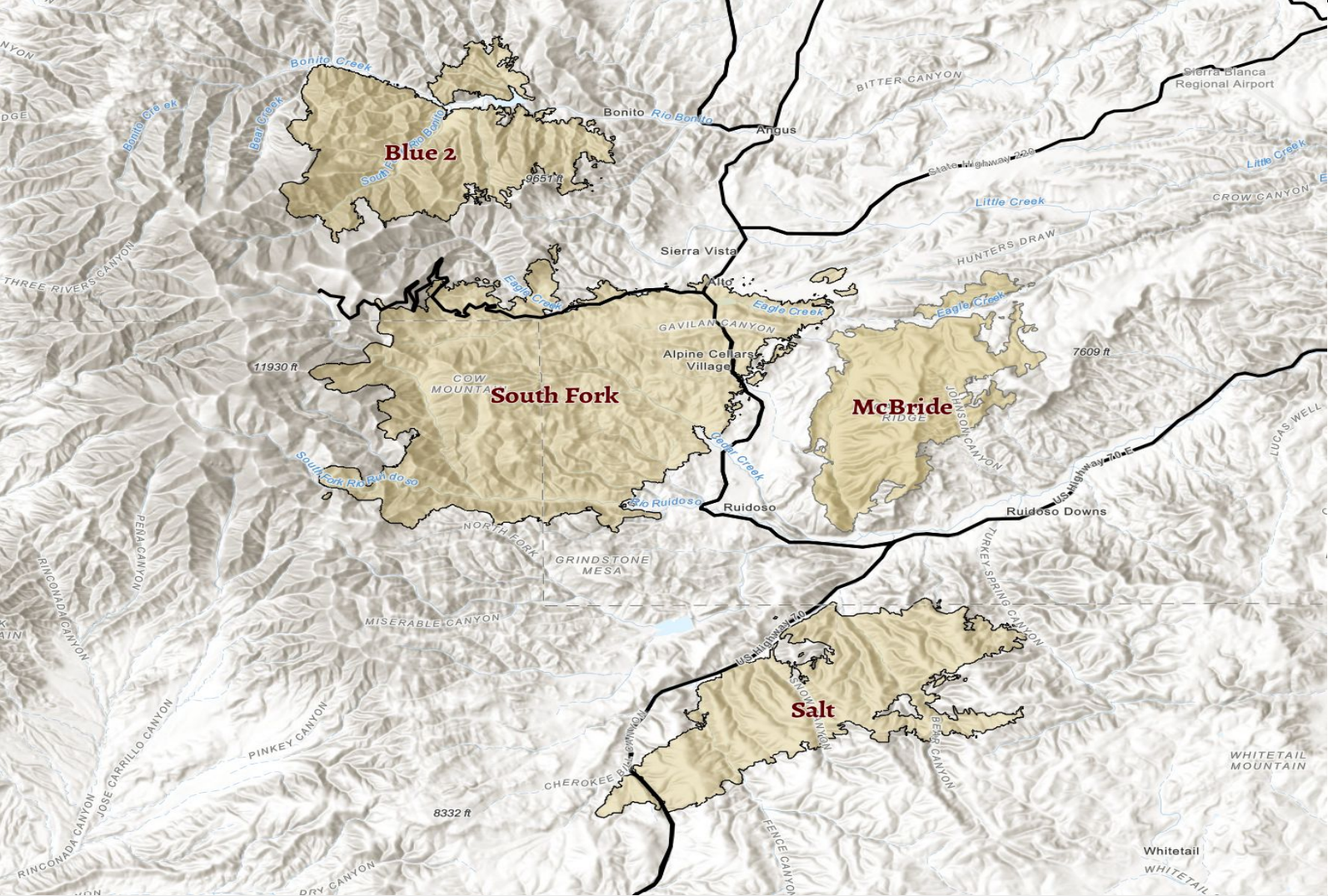




Burn Scar Debris Flow Risk - Ruidoso, New Mexico

Sacramento Complex

	Monday, Jul 7	Tuesday, Jul 8	Wednesday, Jul 9	Thursday, Jul 10
Flash Flooding	Major	Moderate	Moderate	Slight
Timing - CDT	1-10 pm	Afternoon	Afternoon	Afternoon

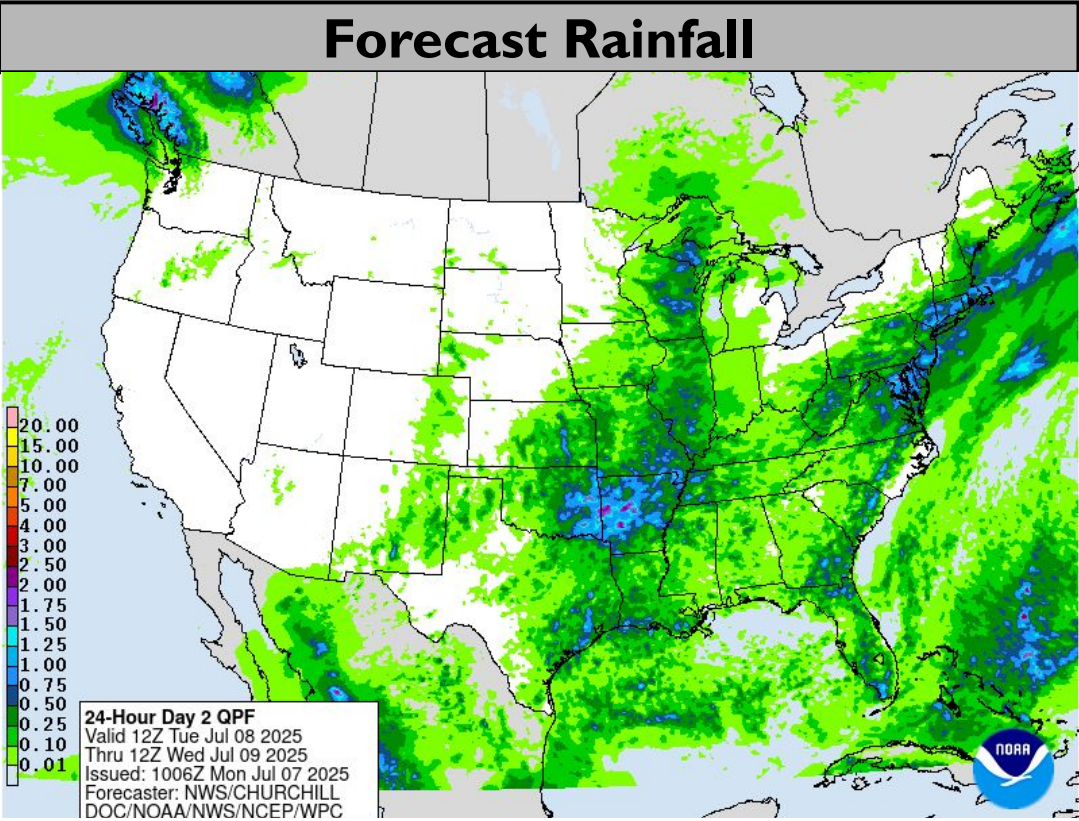
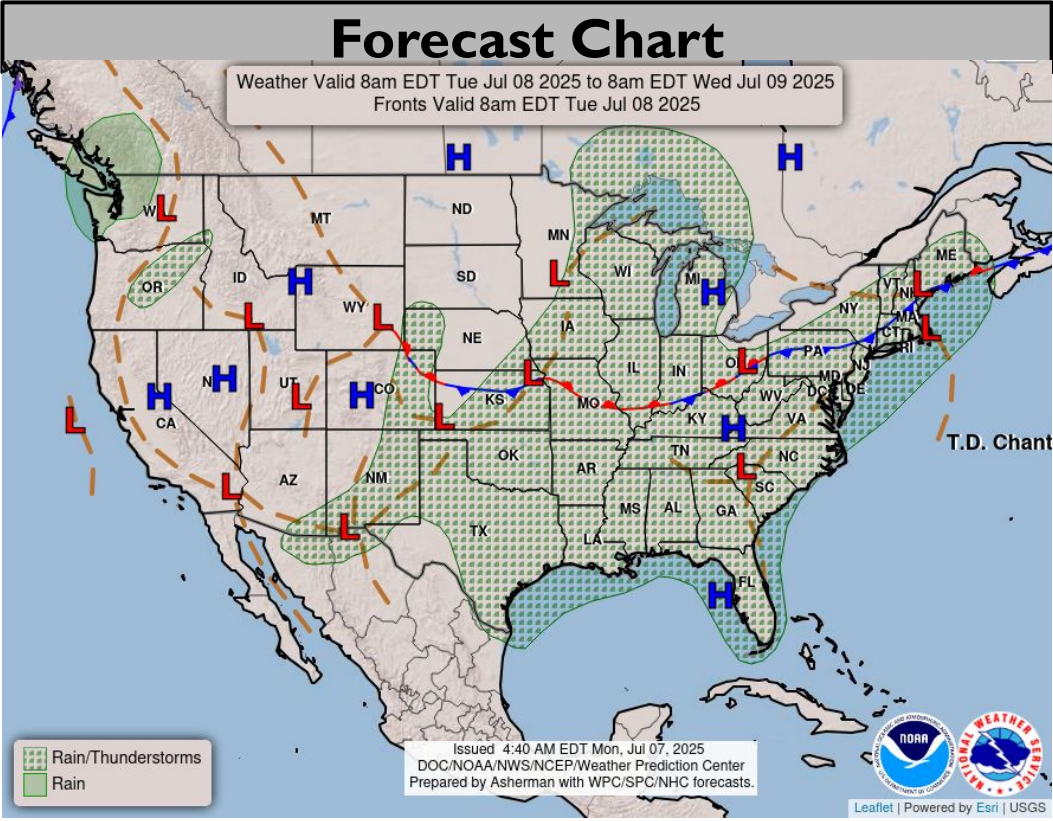


Little to None	No Flash Flood Threat
Minor (level 1 of 4)	Slight Risk of Flash Flooding
Moderate (level 2 of 4)	Probability of Flash Flooding Issuance 40% to 60%
Major (level 3 of 4)	Flood Watch Issued OR Debris Flow Probability > 50%
Extreme (level 4 of 4)	Life Threatening Flash Flooding Likely - Historic Type Day
<ul style="list-style-type: none">WPC's Excessive Rainfall Outlook is <i>Not Applicable</i> to burn scars.*Note* 2nd year burn scars can be <u>more dangerous</u> than year 1.	



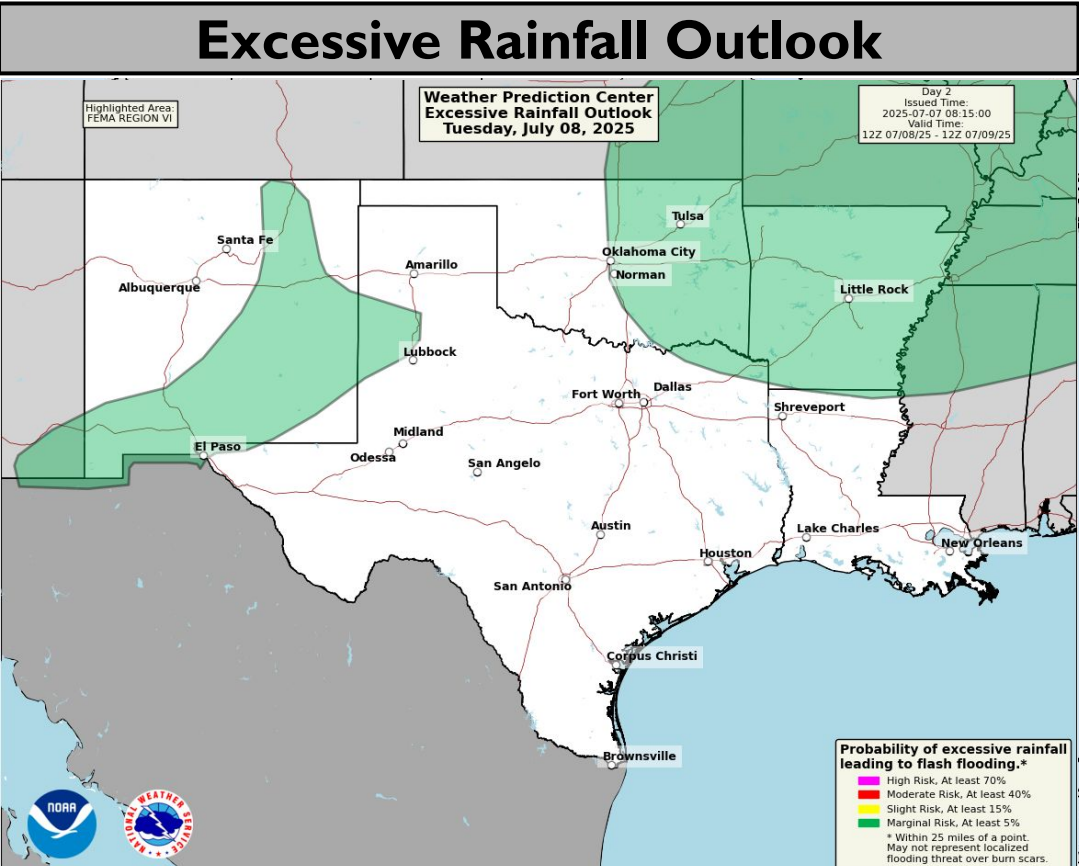
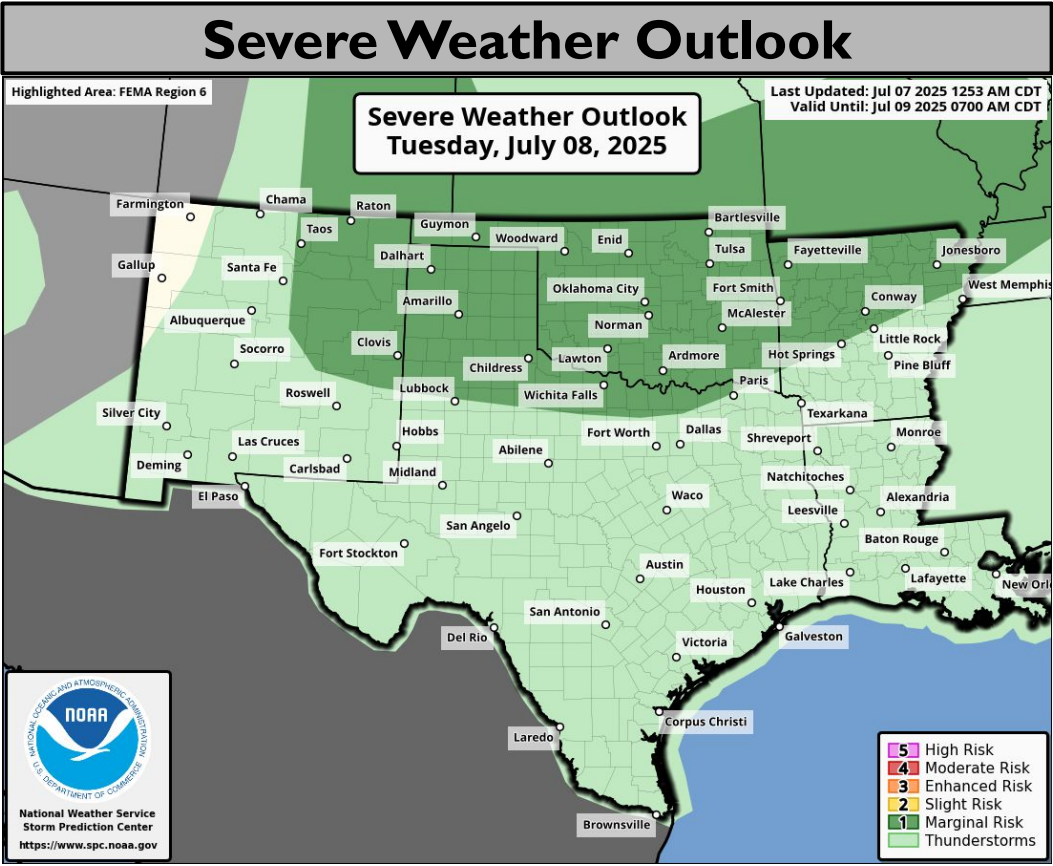


Tomorrow's Weather



Marginal risk (level 1 of 4) of flash flooding in NM, TX Panhandle, NE TX, E OK, AR.

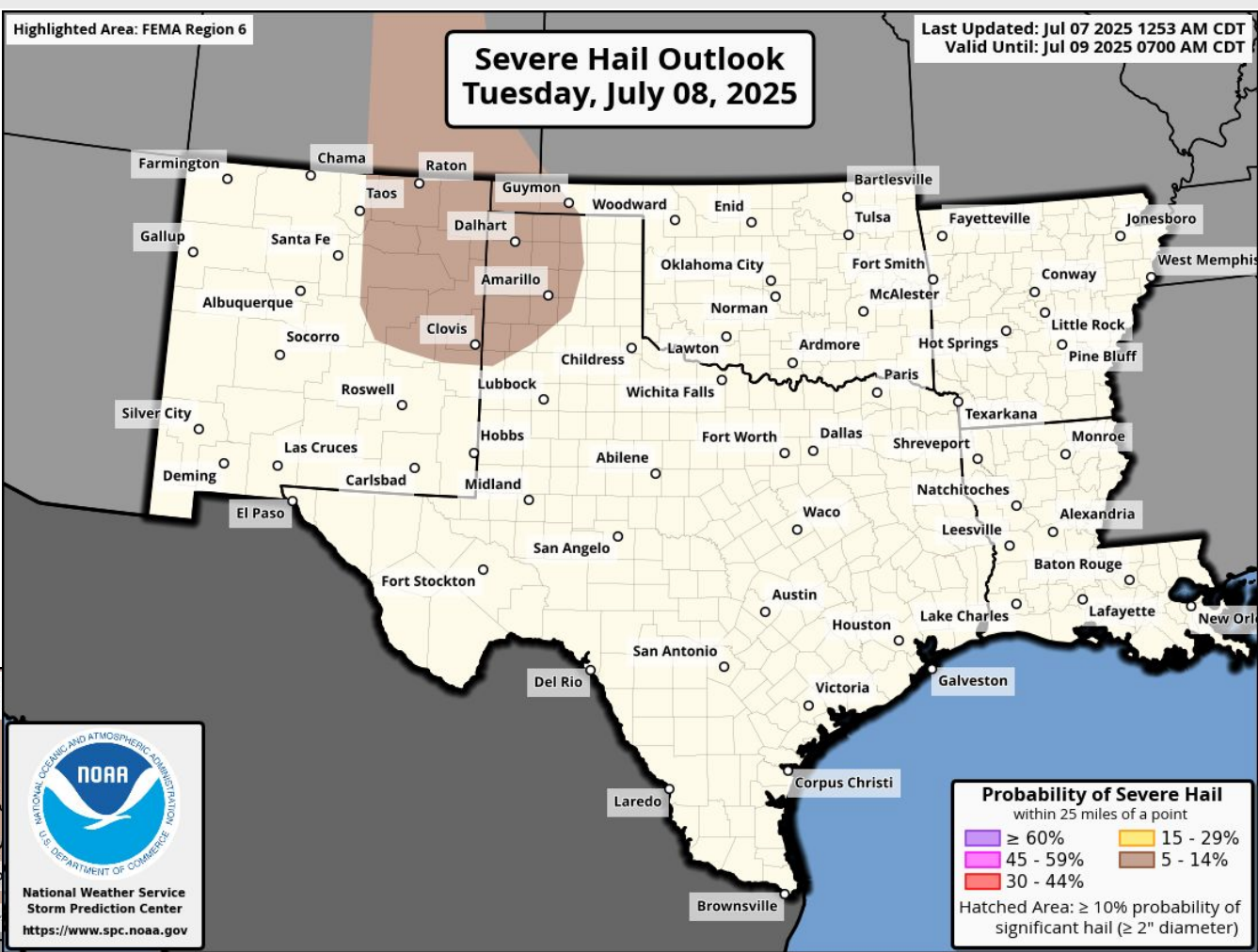
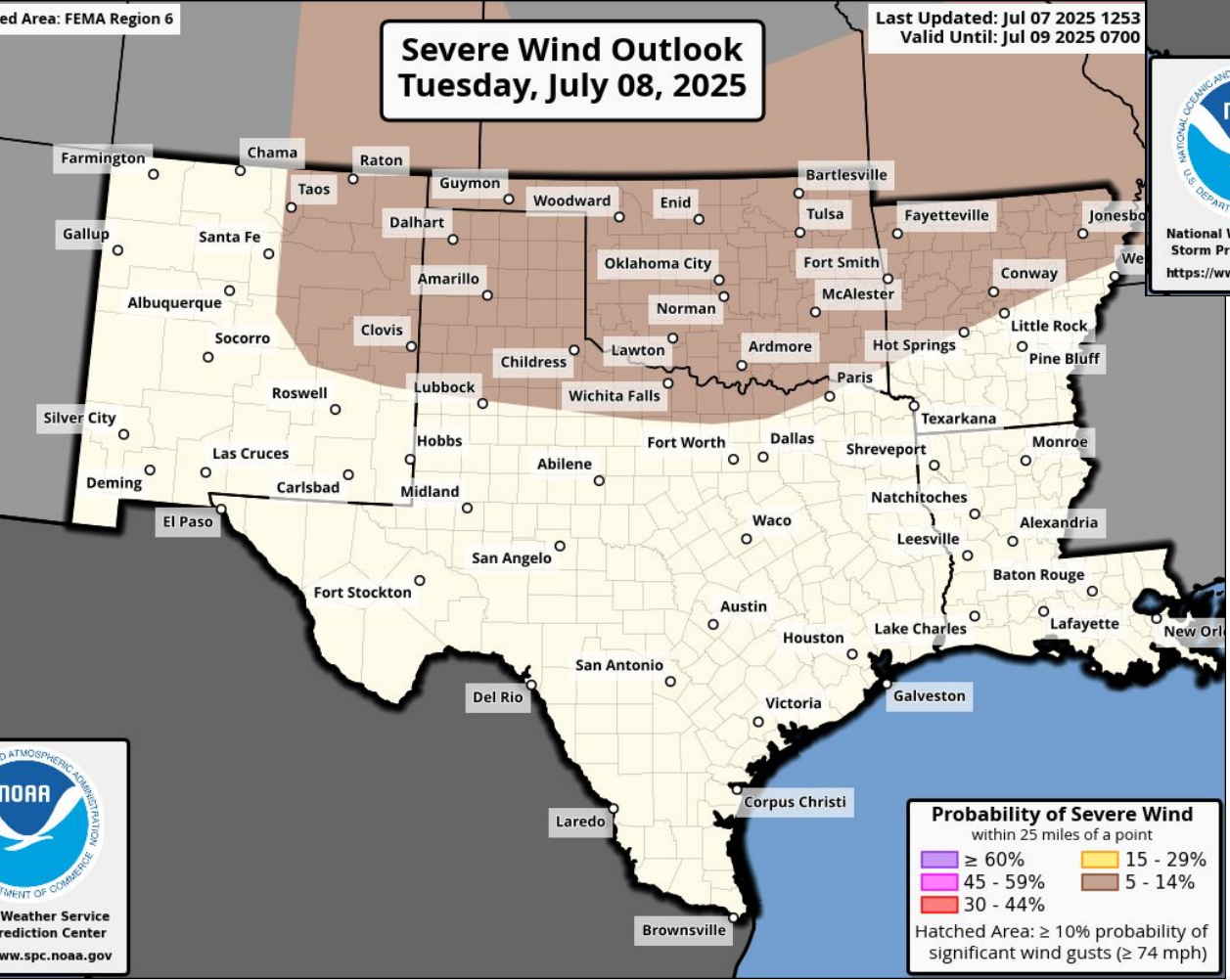
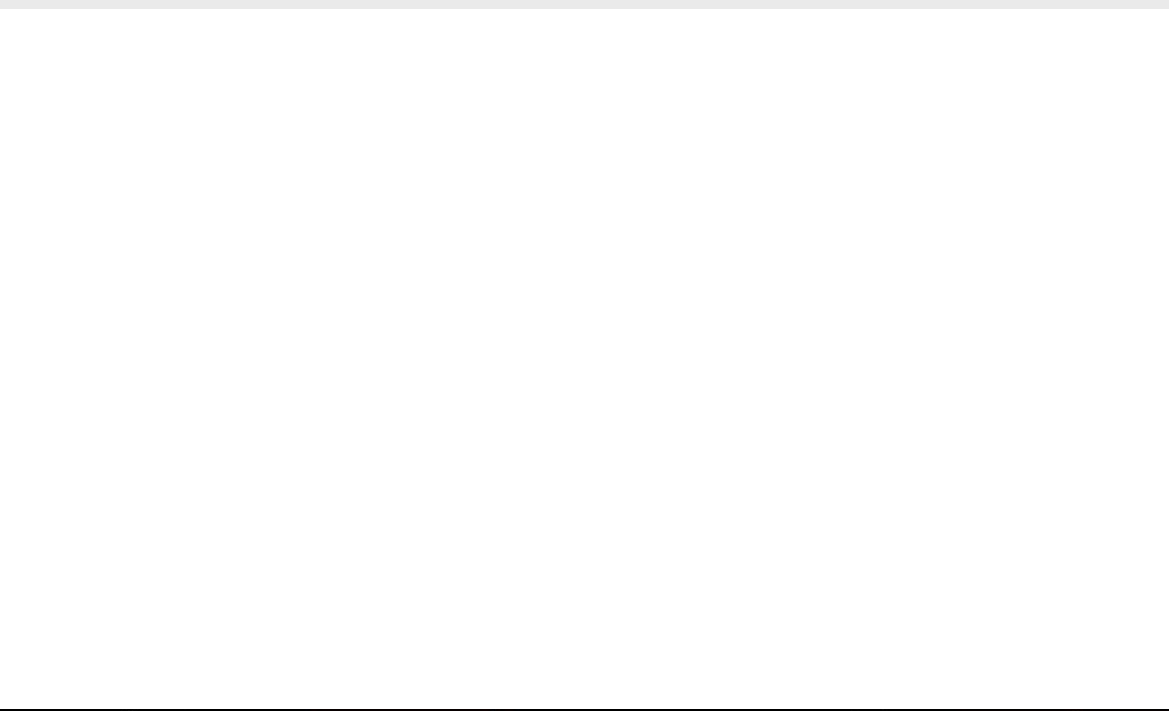
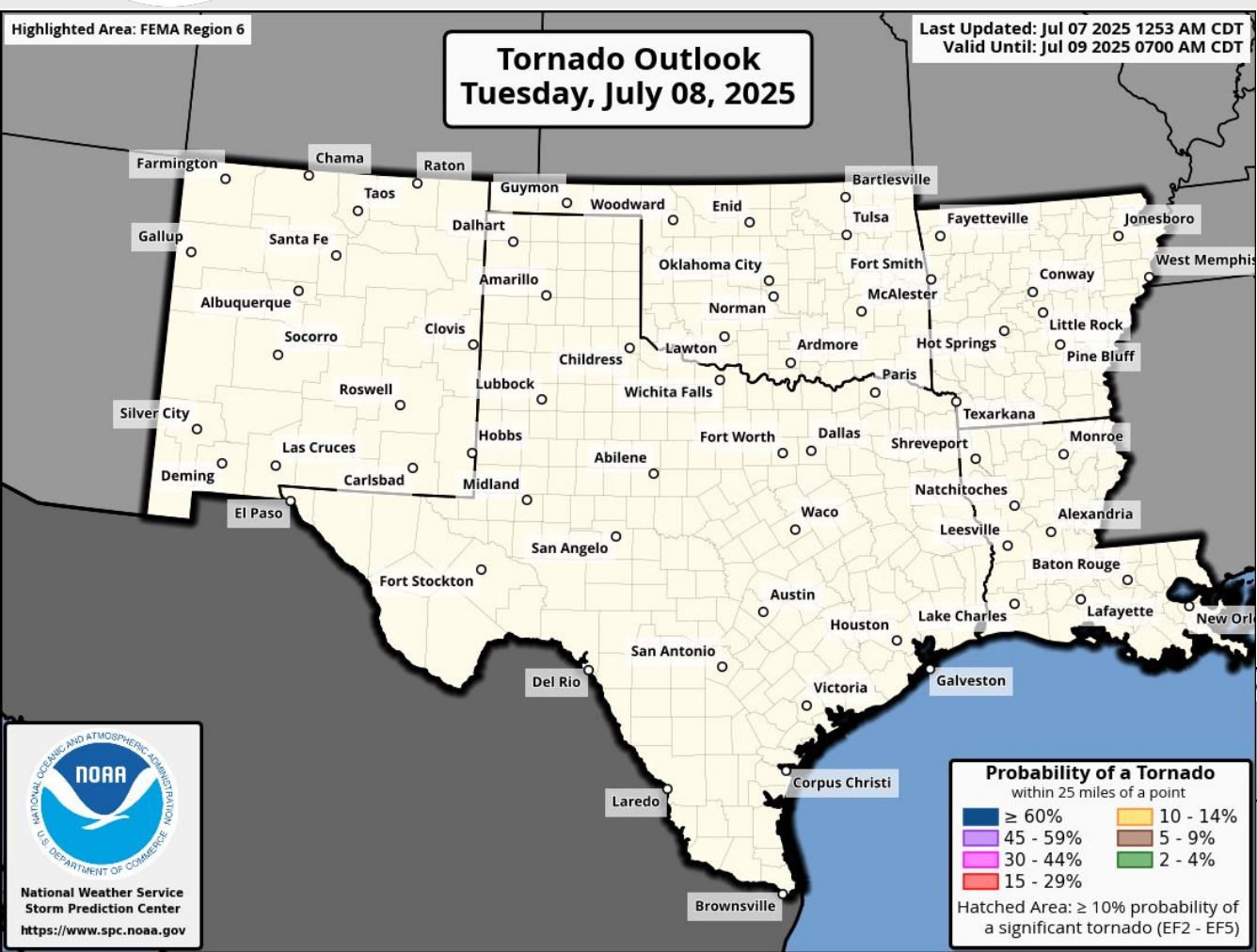
Marginal risk for severe storms (level 1 of 5) over OK, TX Panhandle, NE NM, N TX.



****Burn Scar Flash Flooding information on Burn Scar Matrix slides****



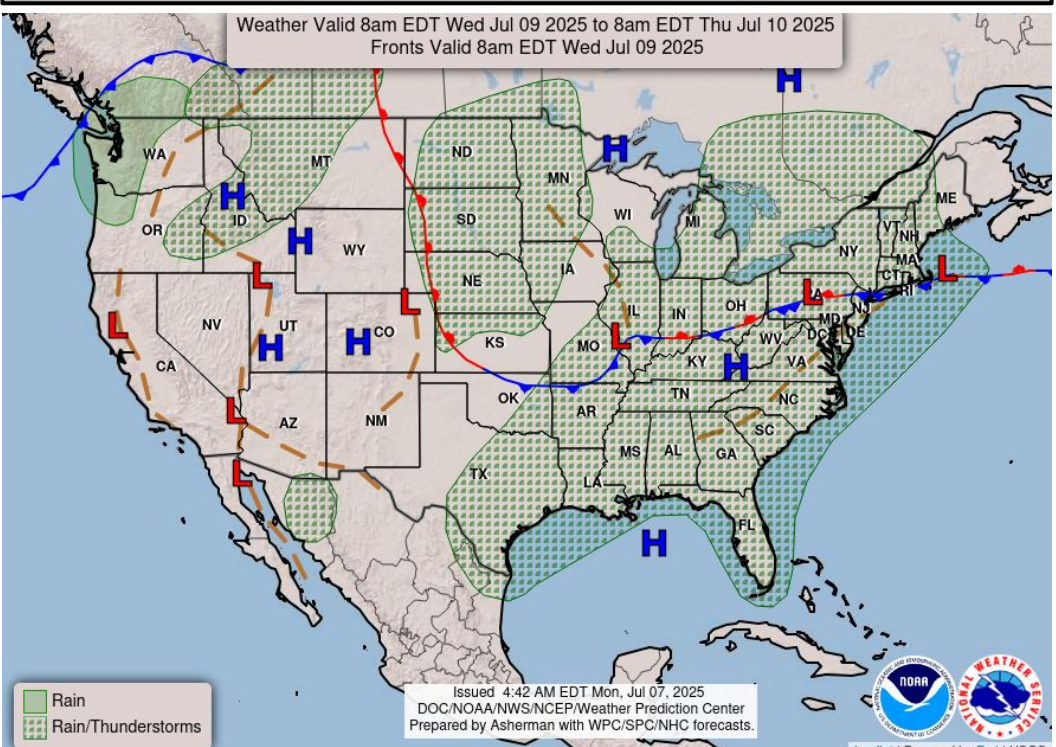
Tomorrow's Tornado & Severe Wind / Hail Probabilities



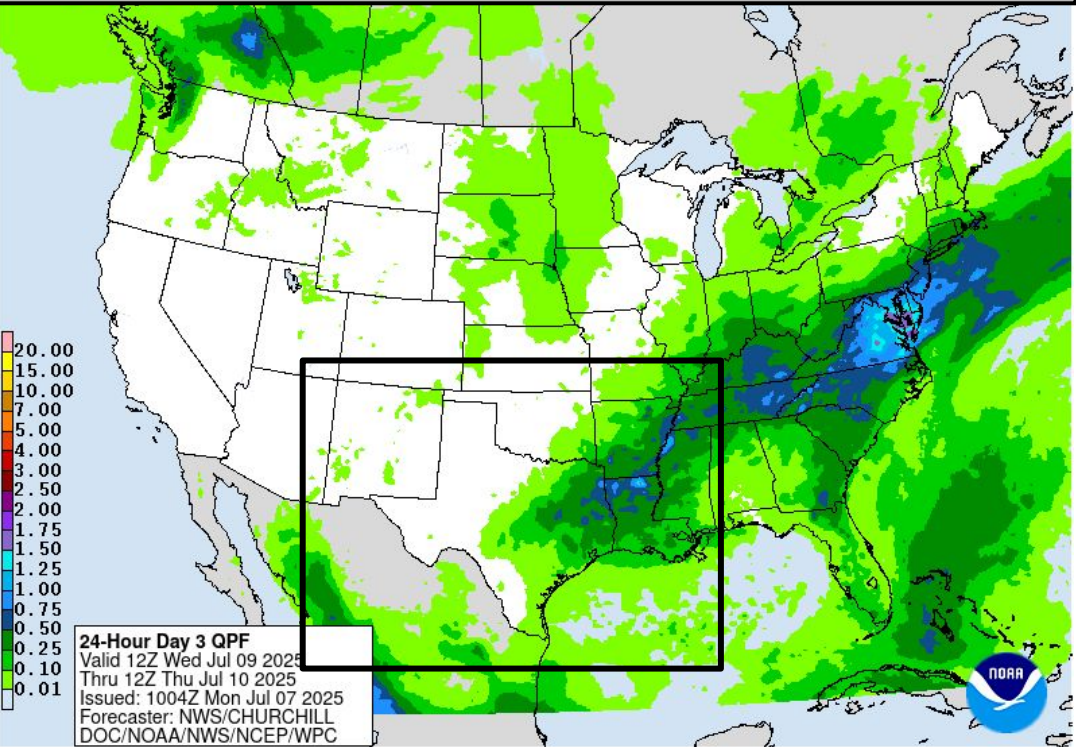


Wednesday's Weather

Forecast Chart

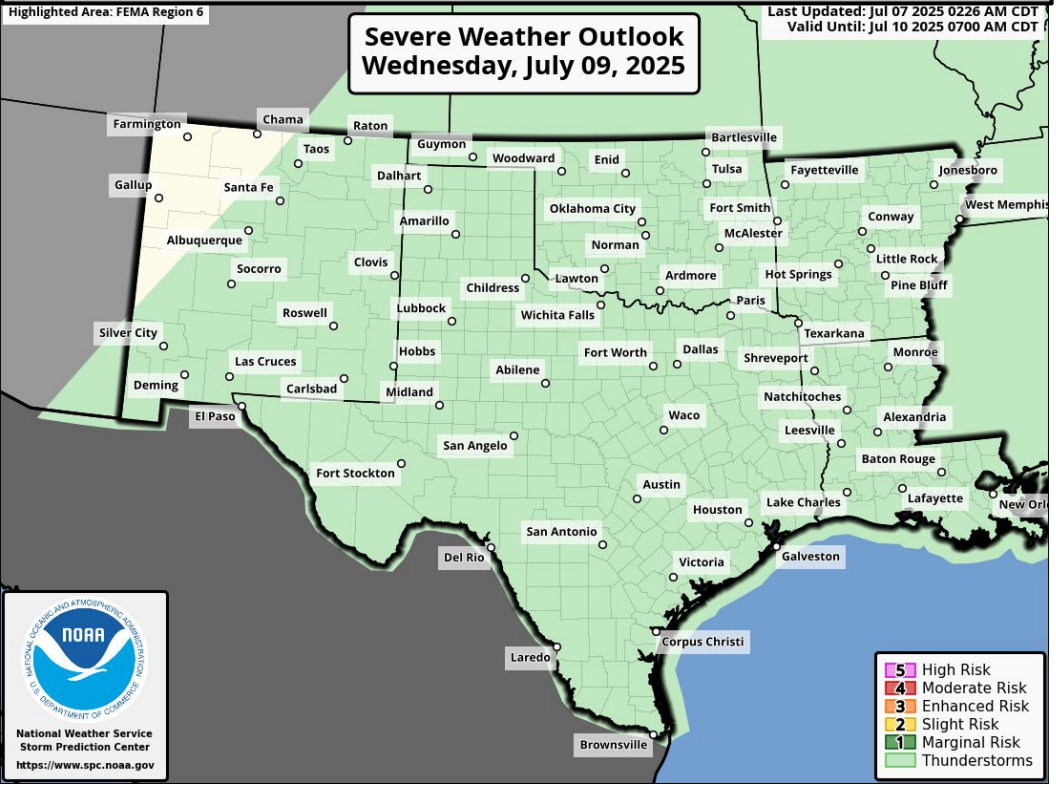


Forecast Rainfall

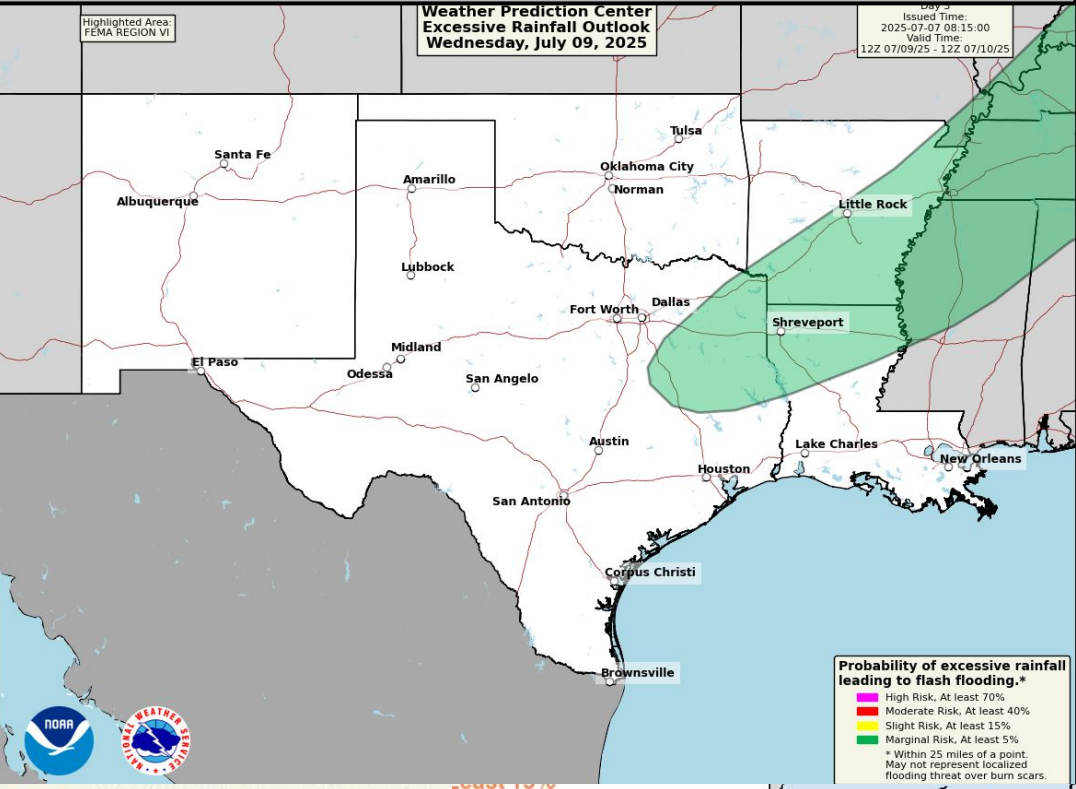


Marginal risk (level 1 of 4) of flash flooding in SAR, N LA, ETX.

Severe Weather Outlook



Excessive Rainfall Outlook

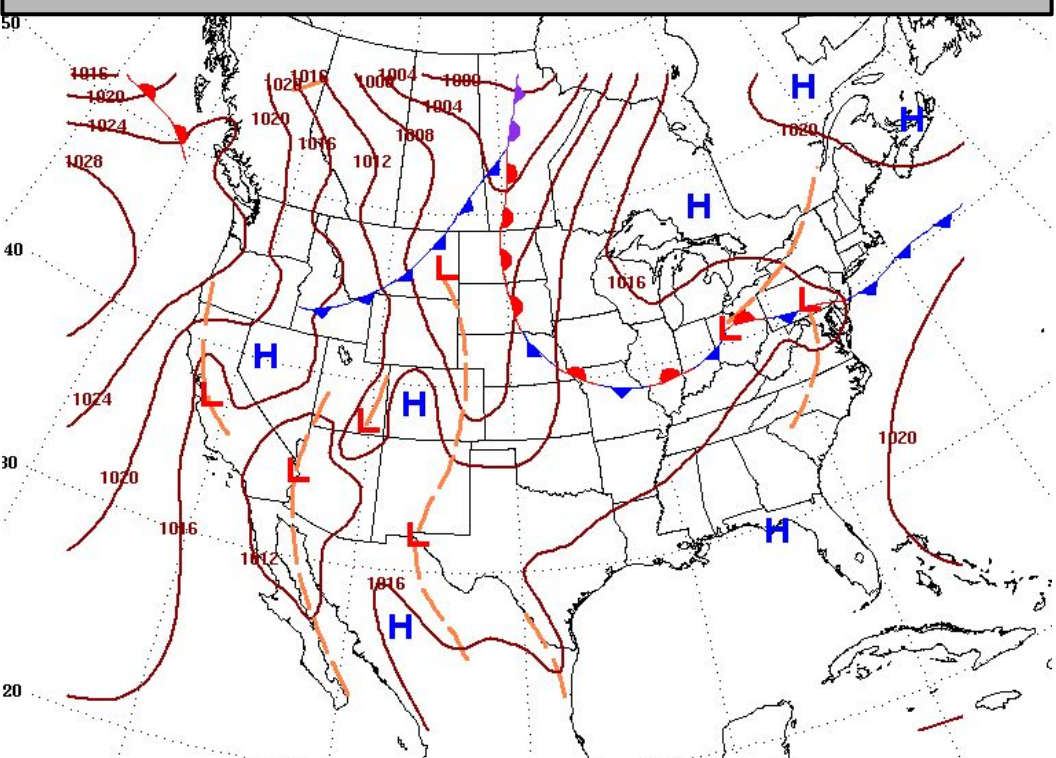


Burn Scar Flash Flooding information on Burn Scar Matrix slides

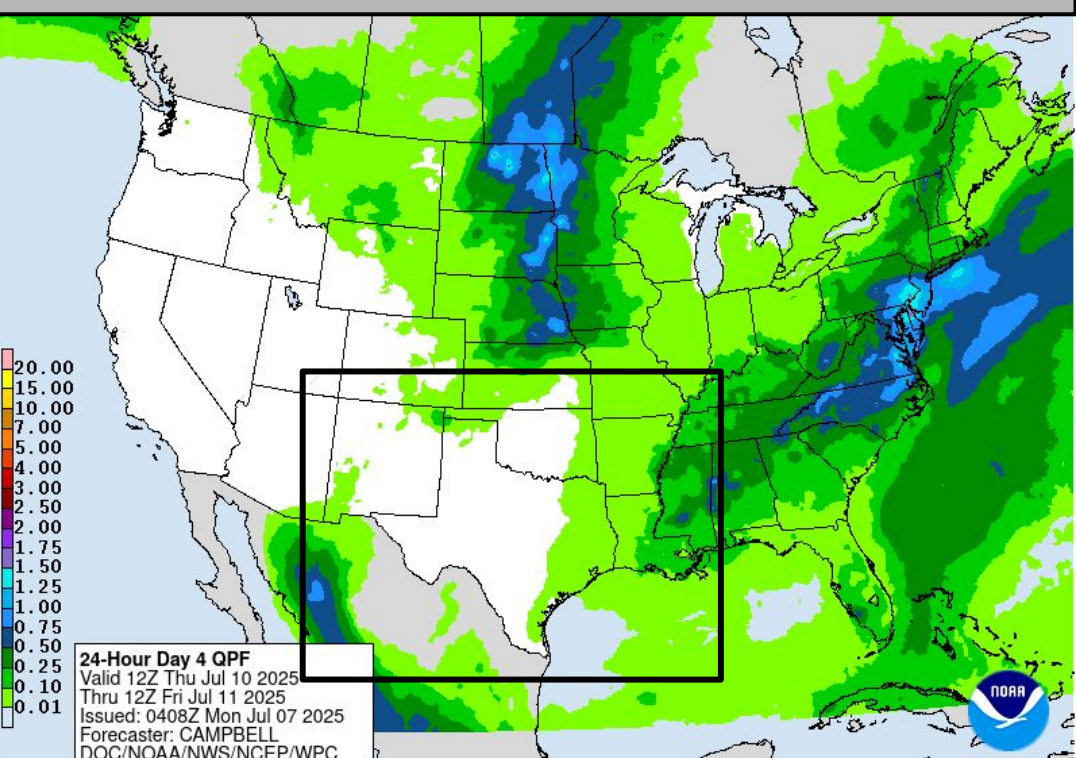


Thursday's Weather

Forecast Chart

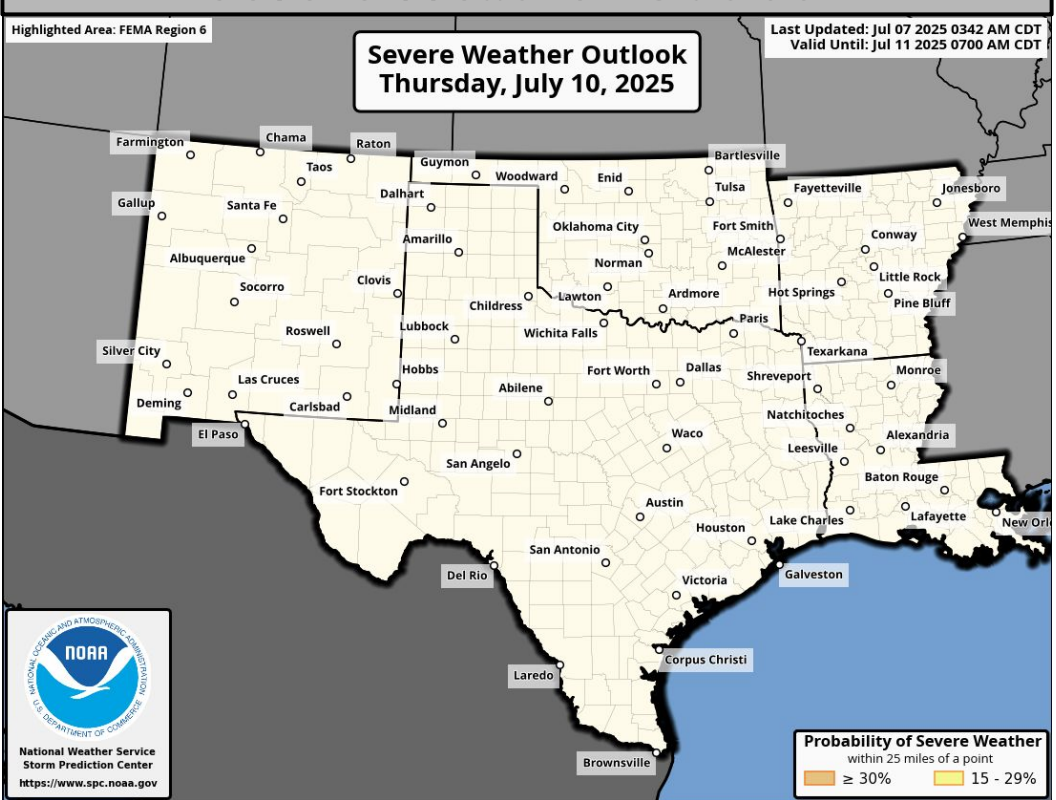


Forecast Rainfall

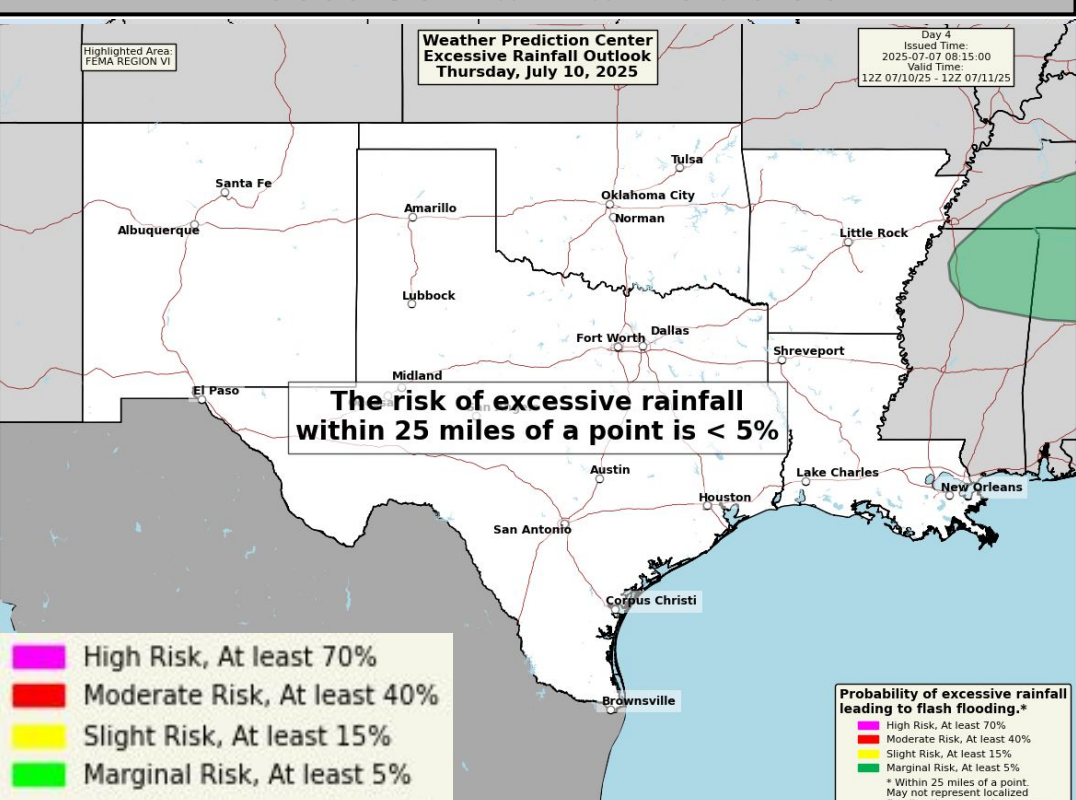


No significant weather expected.

Severe Weather Outlook



Excessive Rainfall Outlook

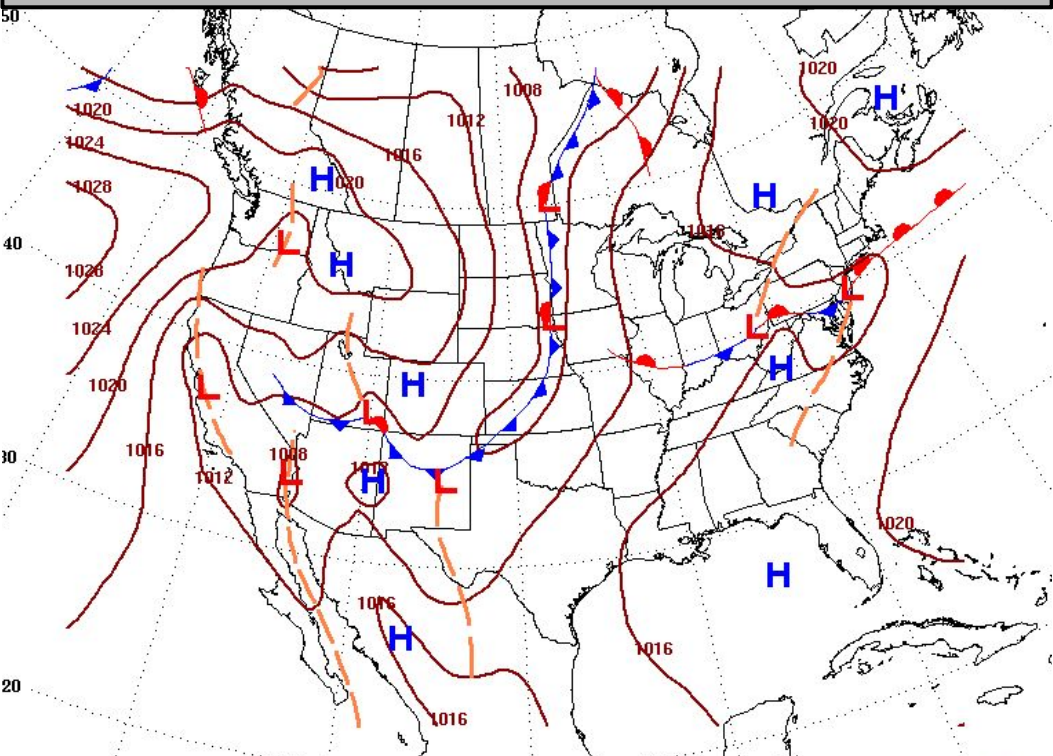


Burn Scar Flash Flooding information on Burn Scar Matrix slides

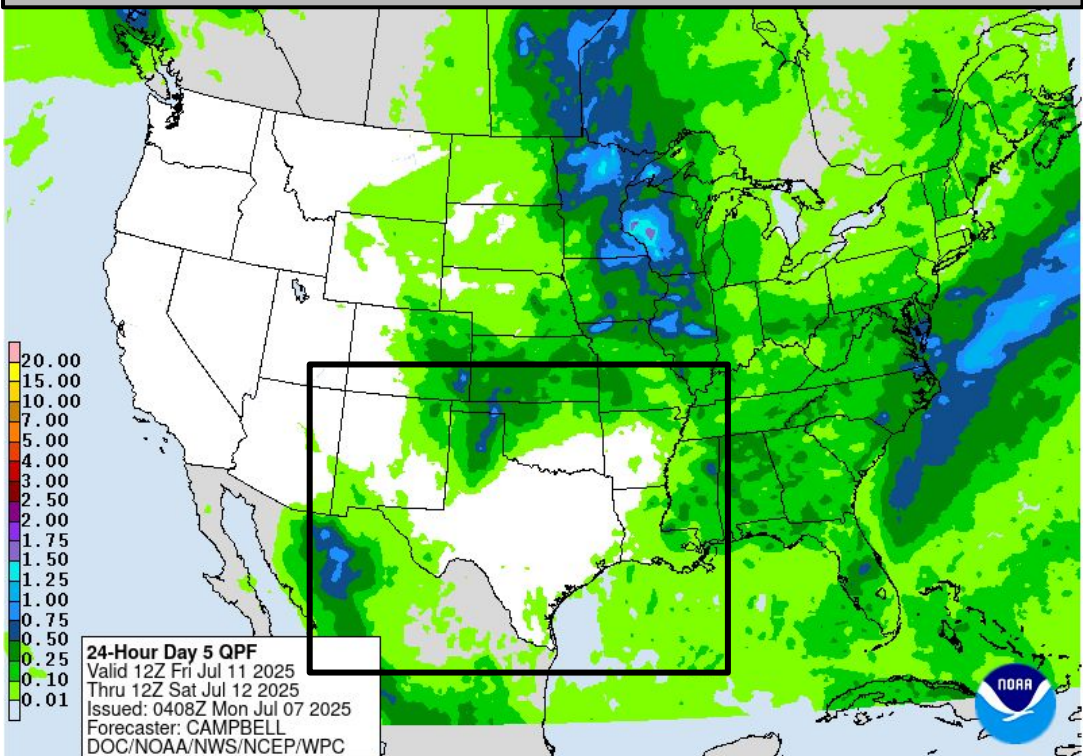


Friday's Weather

Forecast Chart

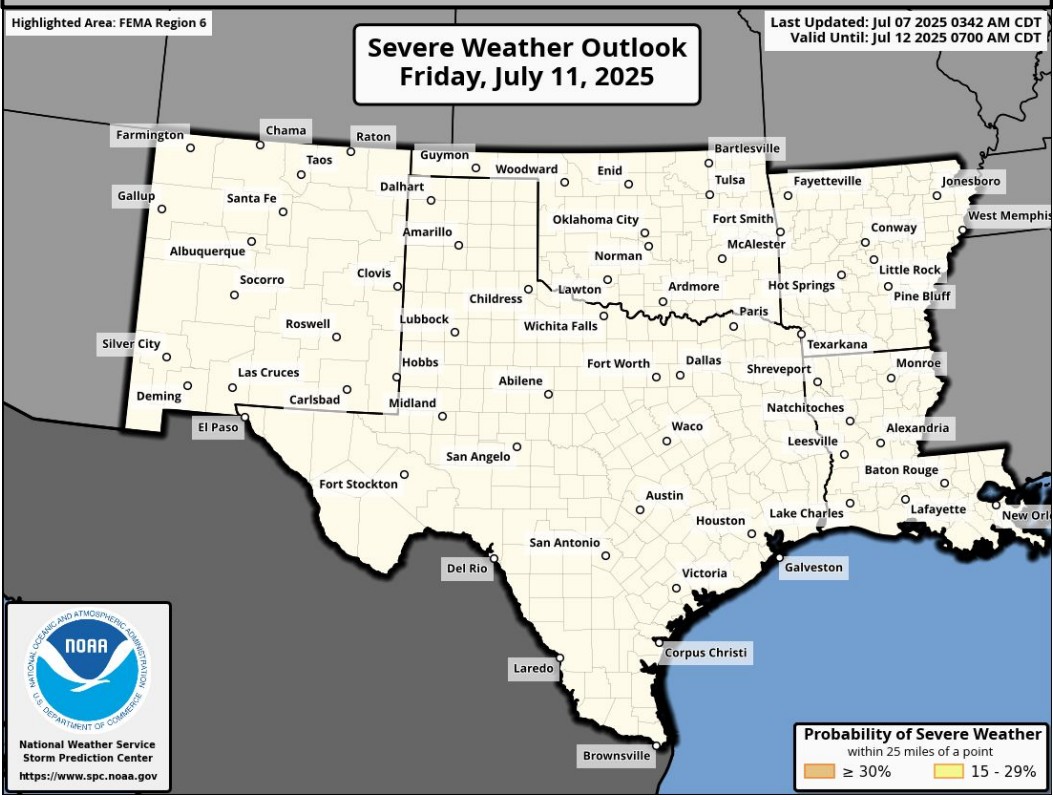


Forecast Rainfall

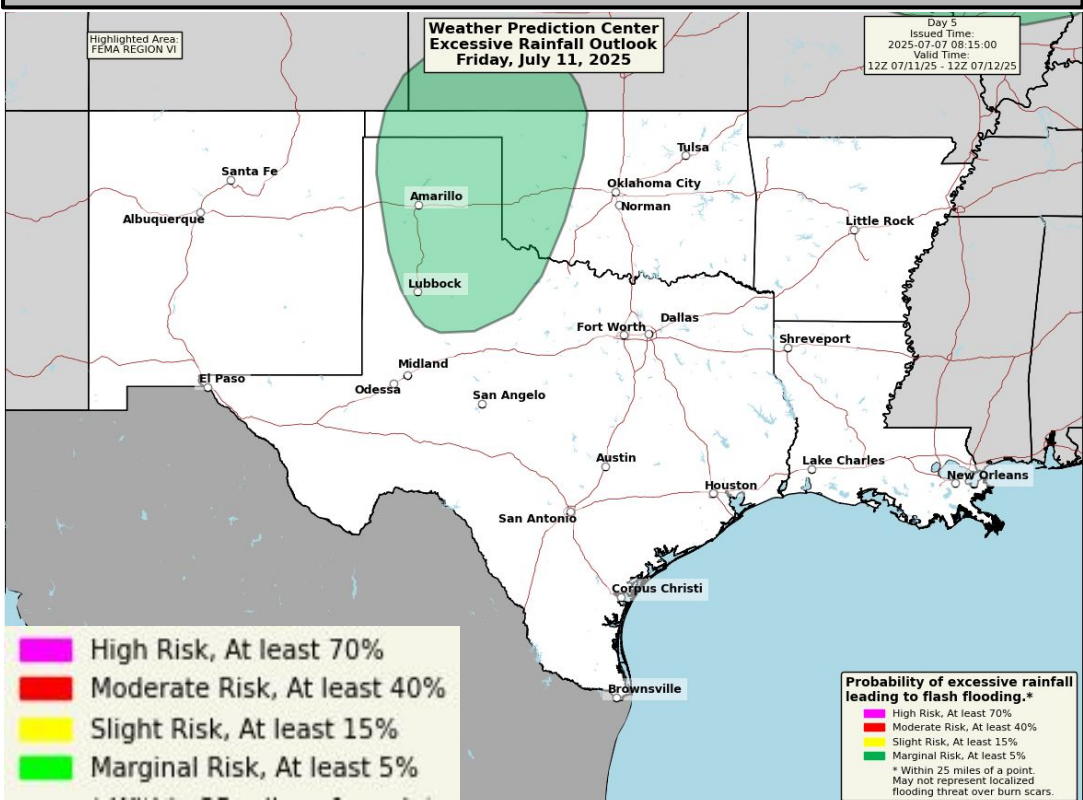


Marginal risk (level I of 4) of flash flooding in TX/OK Panhandles, W OK.

Severe Weather Outlook



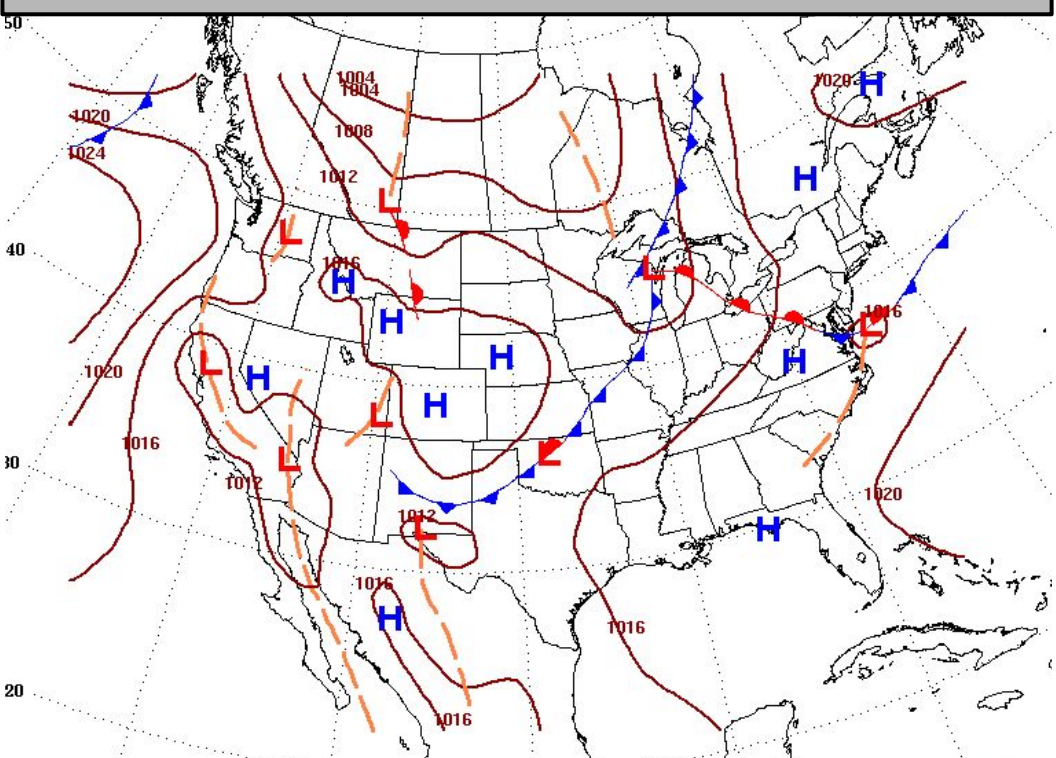
Excessive Rainfall Outlook



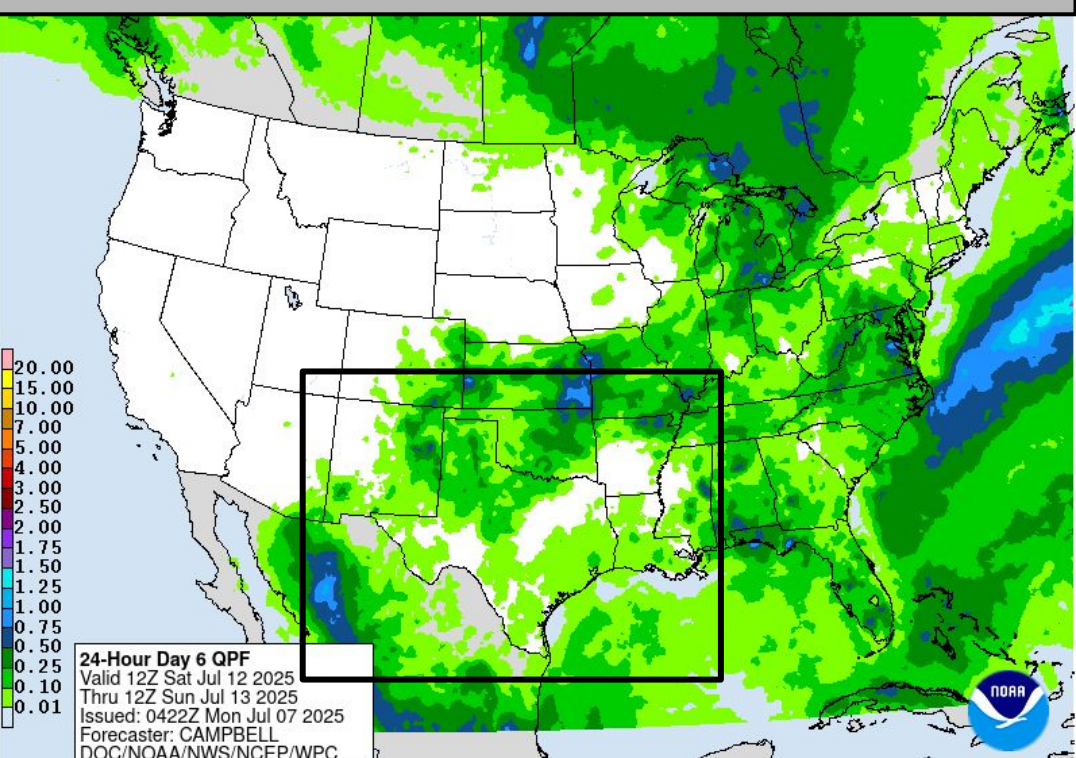


Saturday's Weather

Forecast Chart

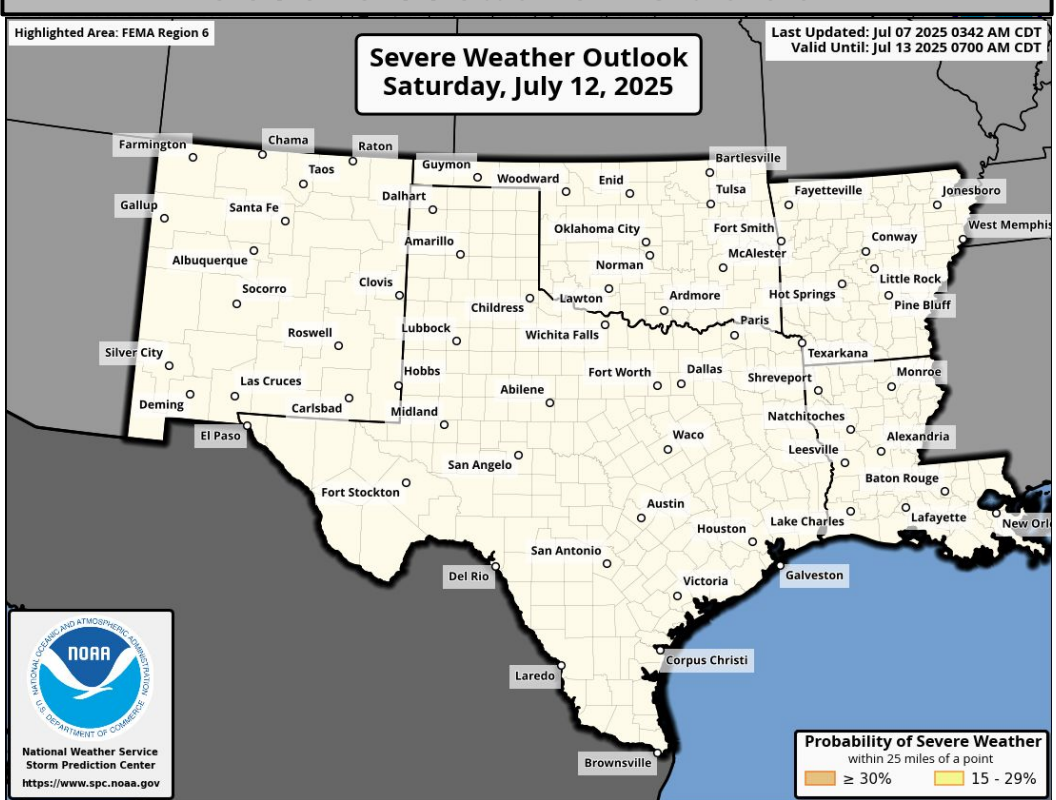


Forecast Rainfall



No significant weather expected.

Severe Weather Outlook



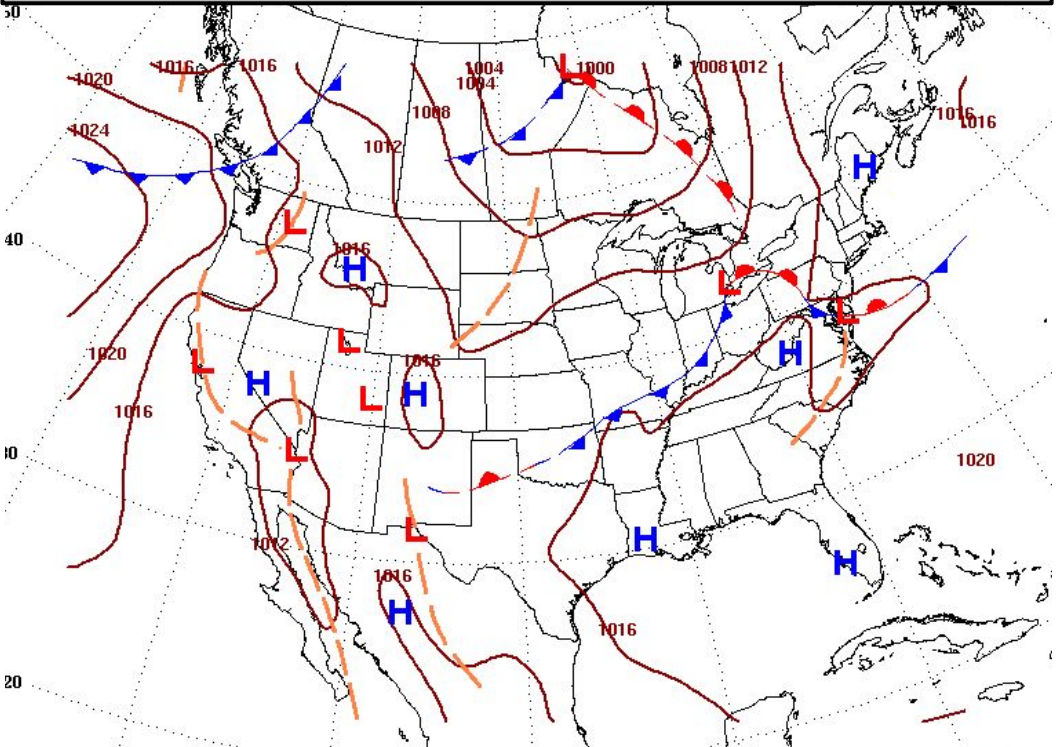
Excessive Rainfall Outlooks
not available beyond Day 5



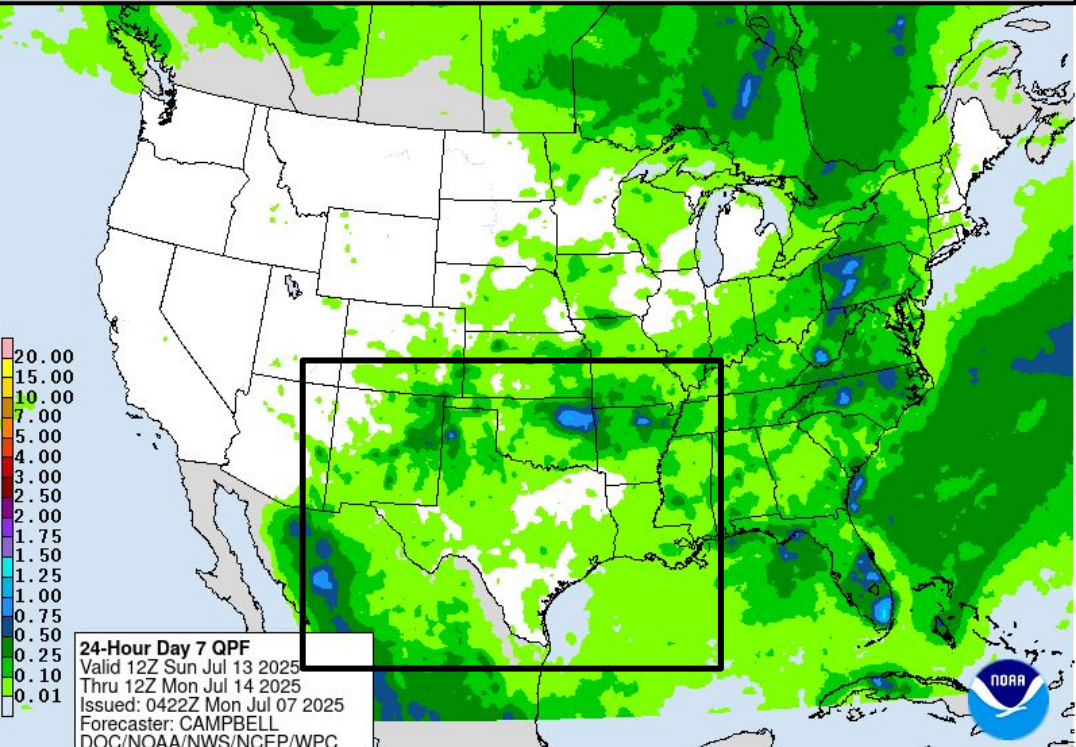


Sunday's Weather

Forecast Chart

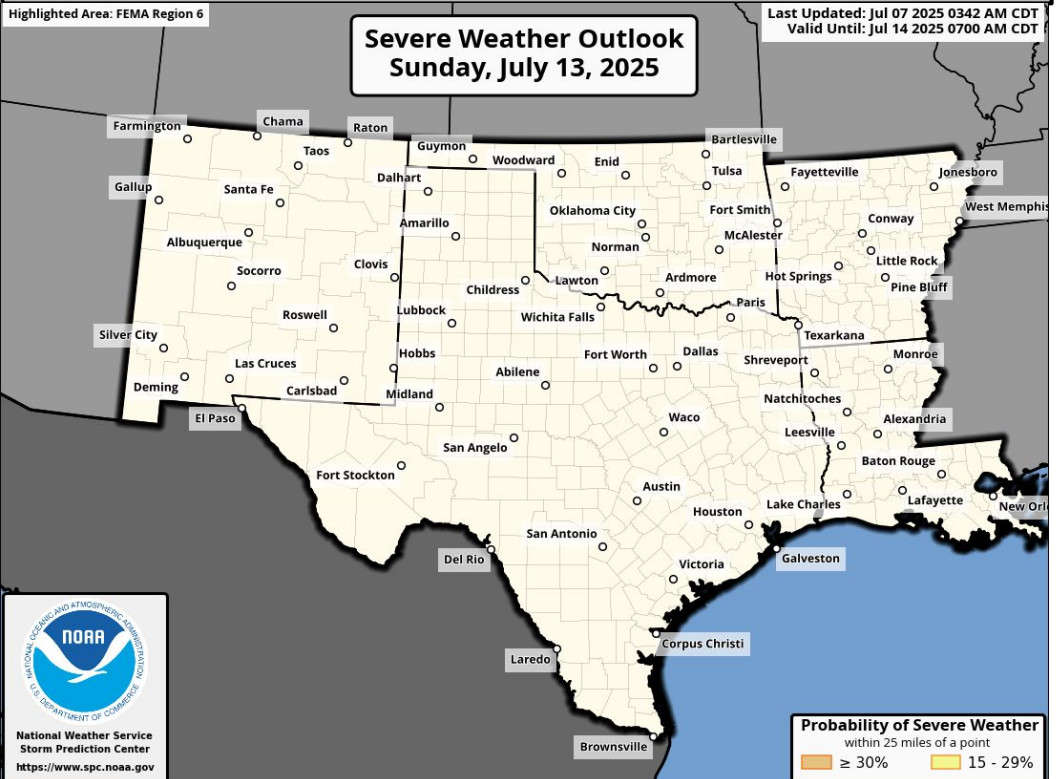


Forecast Rainfall



No significant weather expected.

Severe Weather Outlook



Excessive Rainfall Outlooks
not available beyond Day 5

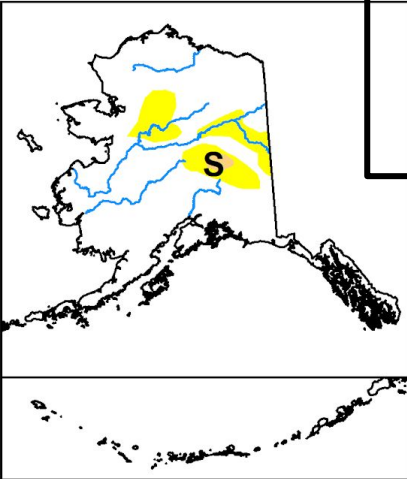
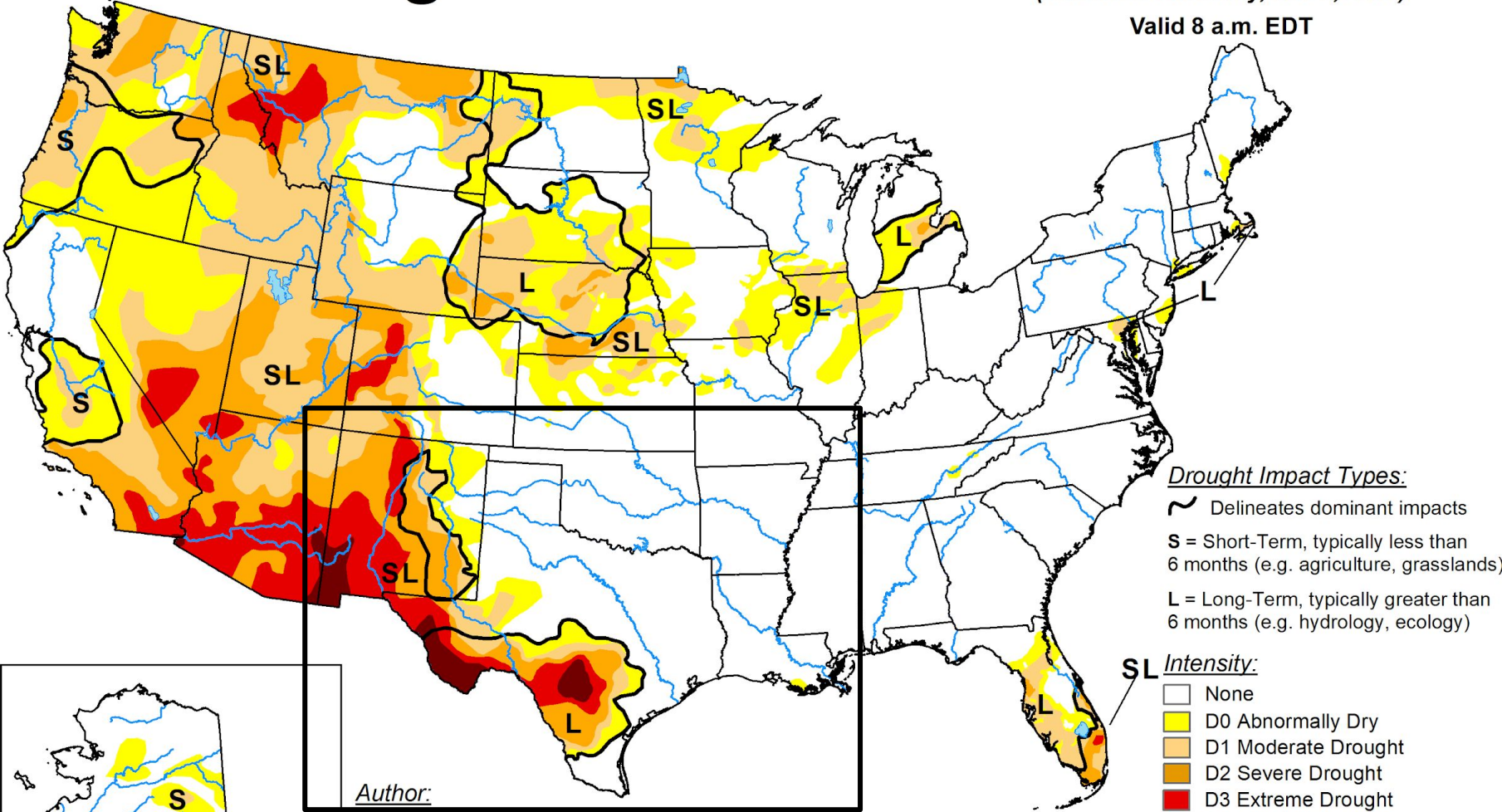




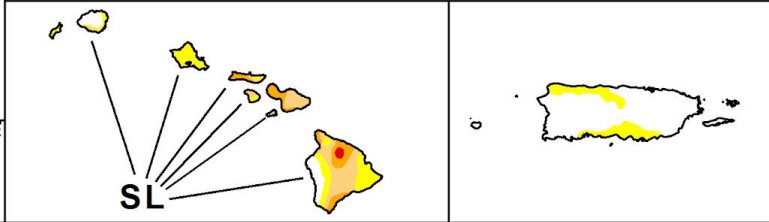
Drought Monitor

U.S. Drought Monitor

July 1, 2025
(Released Thursday, Jul. 3, 2025)
Valid 8 a.m. EDT



Author:
Curtis Riganti
National Drought Mitigation Center



Drought Impact Types:
~ Delineates dominant impacts
S = Short-Term, typically less than 6 months (e.g. agriculture, grasslands)
L = Long-Term, typically greater than 6 months (e.g. hydrology, ecology)

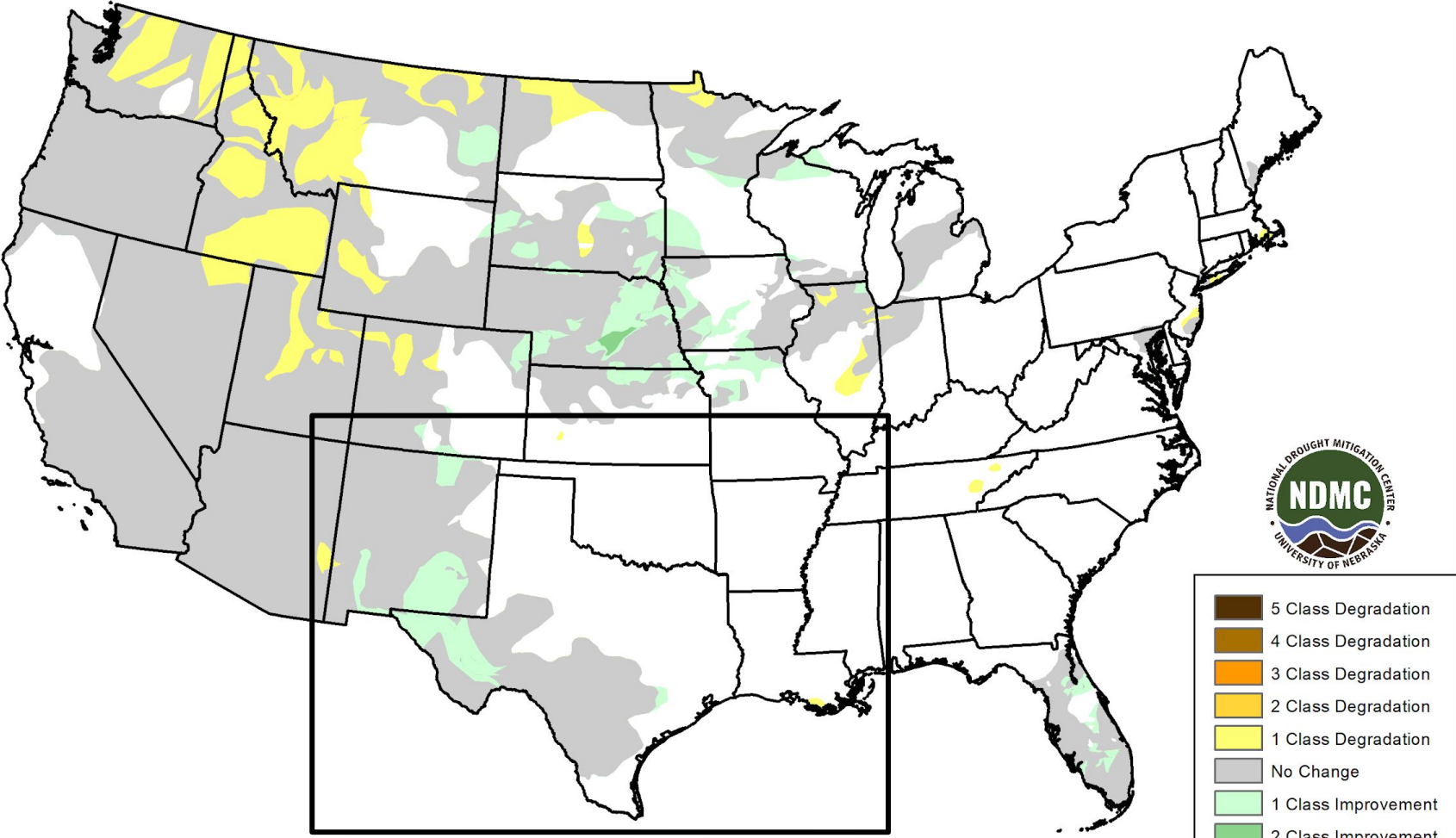
SL Intensity:
None
D0 Abnormally Dry
D1 Moderate Drought
D2 Severe Drought
D3 Extreme Drought
D4 Exceptional Drought

The Drought Monitor focuses on broad-scale conditions. Local conditions may vary. For more information on the Drought Monitor, go to <https://droughtmonitor.unl.edu/About.aspx>



droughtmonitor.unl.edu

U.S. Drought Monitor Class Change - CONUS 1 Week



July 1, 2025
compared to
June 24, 2025

droughtmonitor.unl.edu

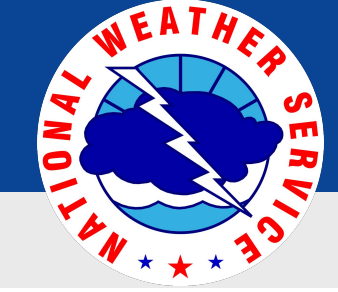


5 Class Degradation
4 Class Degradation
3 Class Degradation
2 Class Degradation
1 Class Degradation
No Change
1 Class Improvement
2 Class Improvement
3 Class Improvement
4 Class Improvement
5 Class Improvement



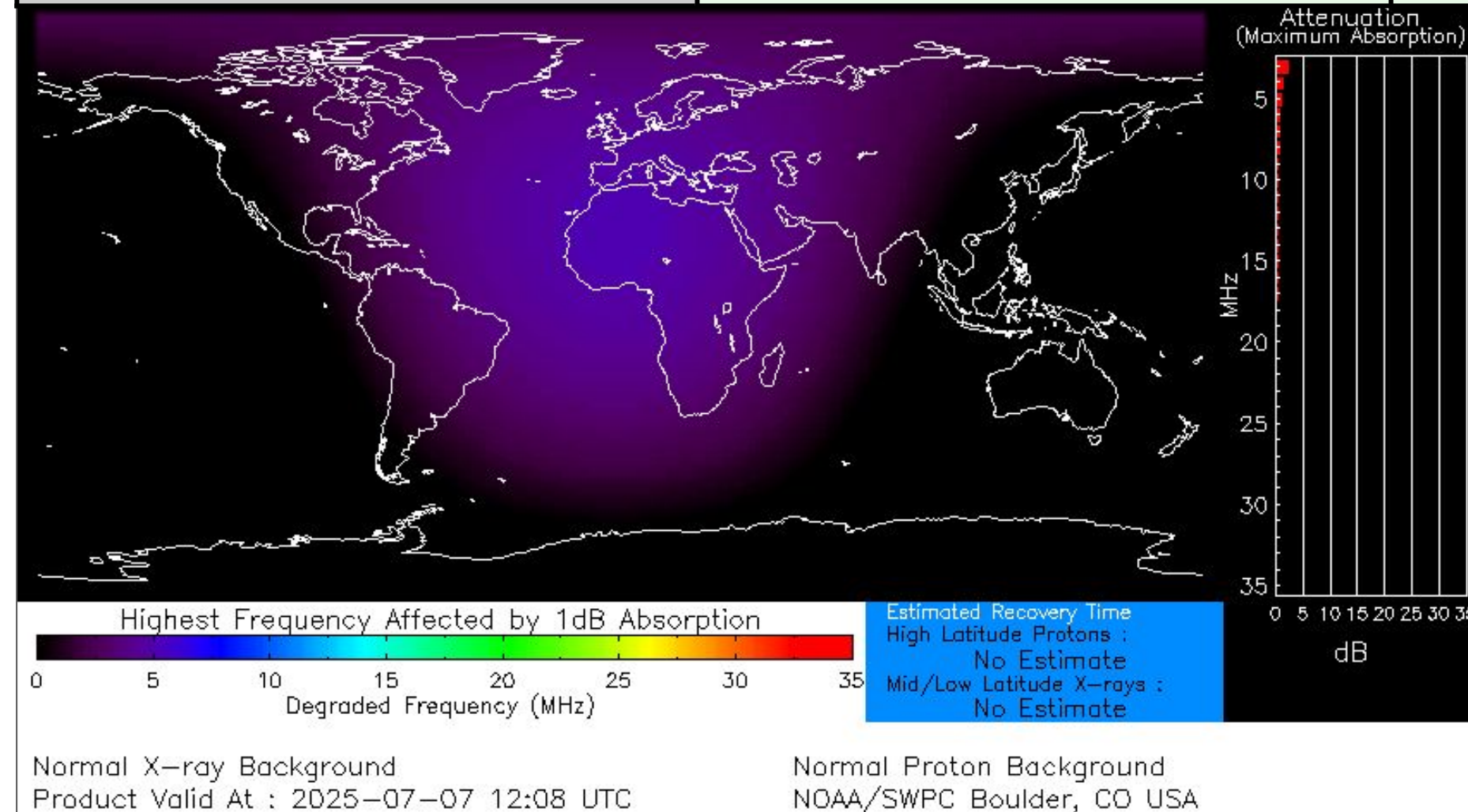
National Oceanic and
Atmospheric Administration
U.S. Department of Commerce

National Weather Service
Southern Region



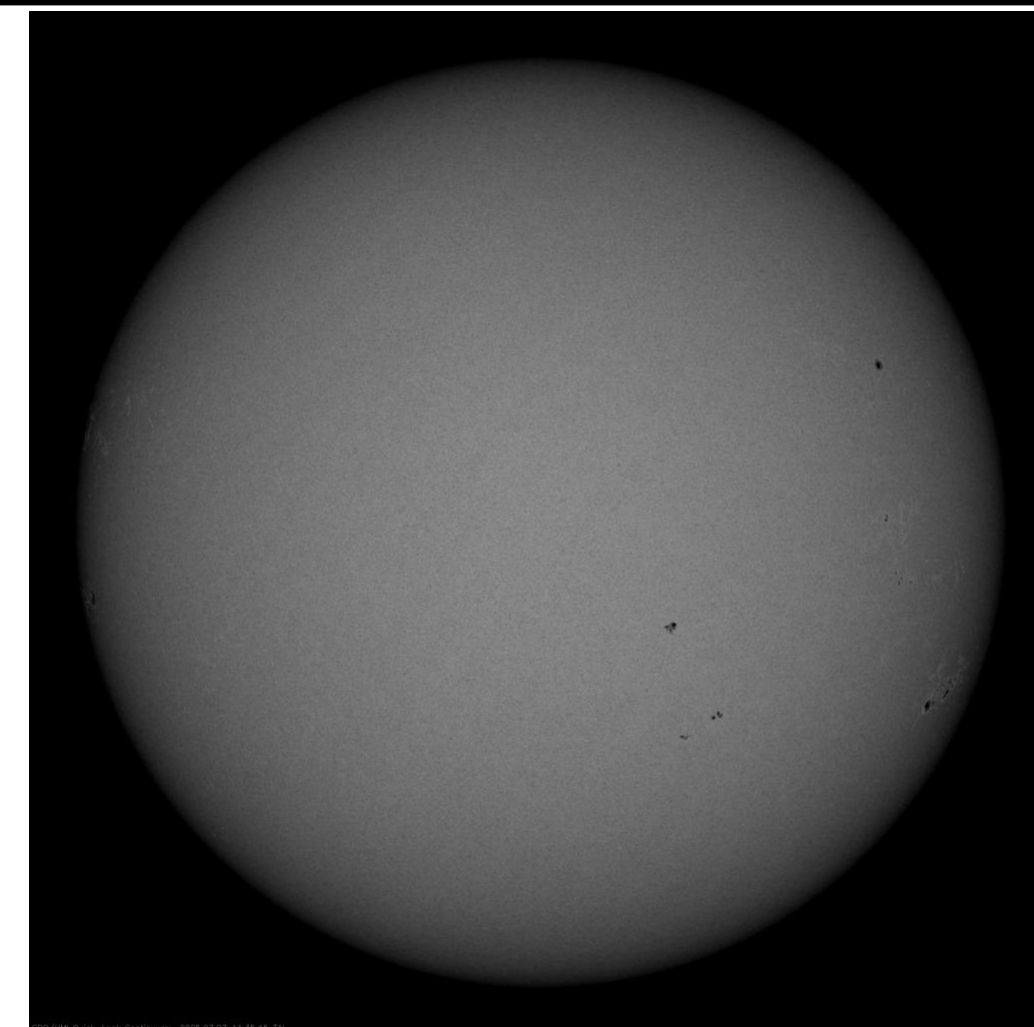
Space Weather 3-Day Forecast

	Monday, Jul 7	Tuesday, Jul 8	Wednesday, Jul 9
Geomagnetic Storms	Quiet (Max Kp = 2)	Quiet (Max Kp = 2)	Quiet (Max Kp = 2)
Solar Radiation Storm (S1-S5)	1%	1%	1%
Radio Blackout (R1-R2)	5%	5%	5%
Radio Blackout (R3-R5)	1%	1%	1%



[Description of the Space Weather Storm Scales](#)

[Latest 3-Day Space Weather Forecast](#)



Weather “Threat” Matrix for FEMA Region VI			
Color	Definition	Criteria	Example(s)
Green	Little to None Safety: Rarely a Direct Threat to Life and Property Impact Potential: Typically Results in Little Inconvenience to Daily Routines	Severe: Marginal Risk from SPC Flooding: Minor flooding expected over localized areas Tropical: None Fire Weather: No Watches/Warnings, fuel moisture above 10% or green up active	<ul style="list-style-type: none"> Thunderstorms expected over LA this afternoon; a few may produce winds to knock down a few trees Something that happens almost every day in a particular season such as seabreeze storms in coastal TX
Yellow	Minor Safety: Rarely a Direct Threat to Life and Property Impact Potential: Typically Results in Some Inconvenience to Daily Life	Severe: Slight Risk from SPC Flooding: Nuisance flooded expected for a widespread area, or Minor flooding expected over isolated areas Tropical: A weak tropical wave expected to move towards or near any coastline Fire Weather: Red Flag Watches/Warnings and/or SPC outlines enhanced or critical fire outlook	<ul style="list-style-type: none"> 2-3 inches of rainfall expected over central AR today and tonight; some minor (brief) street flooding possible Scattered severe storms possible, one or two tornadoes expected, along with reports of strong winds/wind damage and ~1” hail
Orange	Moderate Safety: Often Threatening to Life and Property, Some Damage Unavoidable Impact Potential: Typically Results in Minor Disruption to Daily Life	Severe: Enhanced Risk from SPC Flooding: Minor flooding expected over a widespread area (including urban locations), or Moderate flooding expected over isolated areas Tropical: A Tropical Storm expected to move towards or near any coastline Fire: Critical fire outlook for more than 2 consecutive days, Warnings for 2 or more consecutive days, D3-D4 drought conditions	<ul style="list-style-type: none"> A snow/sleet mix is expected to move through or near the DFW area tomorrow morning; travel impacts likely Numerous severe storms possible, a few tornadoes possible along with several reports of wind damage along with damaging hail Some large fires reported, burn bans advertised, critical conditions expected
Red	Major Safety: Extensive Property Damage Likely, Life Saving Actions Also will be Needed Impact Potential: Will likely result in Large Disruption to Daily Life	Severe: Moderate Risk from SPC Flooding: Moderate flooding expected over a widespread area (including urban locations) Tropical: A Hurricane expected to move towards or near any coastline Fire: Large areas of critical conditions for 2 or more days, Warnings for 3 or more days, Severe to extreme drought	<ul style="list-style-type: none"> A Category 1 hurricane will be moving towards the NW Gulf in the next few days Widespread severe storms likely, strong tornadoes, widespread wind damage, and destructive hail Large fires ongoing throughout the area with critical fire weather conditions expected to continue
Purple	Extreme Safety: Property Damage Unavoidable, Immediate Action to Save Life will be Needed Impact Potential: Typically Results in Long-Lived Widespread Major Disruption to Daily Life	Severe: High Risk from SPC Flooding: Major flooding expected over a widespread area (including urban locations) Tropical: A Major Hurricane (Cat3 or greater) expected to move towards or near any coastline Fire: Large area of critical conditions for 2 or more days, Warnings for 3 or more days, Long term (months) of severe to extreme drought	<ul style="list-style-type: none"> A Category 4 hurricane is headed towards the SE LA; major storm surge, flooding and damaging winds anticipated to begin tomorrow Widespread severe storms expected, tornado outbreak probable with long-lived, very widespread and particularly intense storms

Criteria for the color codes in this briefing is to the left, please provide any feedback to sr-srh.roc@noaa.gov



National Weather Service

Southern Region Headquarters

Regional Operations Center

Fort Worth, TX



Phone: (682) 703-3747



Facebook: NWSSouthern



E-mail: sr-srh.roc@noaa.gov



X: NWSSouthern



Web: www.weather.gov/srh