



FEMA



Prepared by
Melissa Beat

FEMA Region 6 Weather Threat Briefing

Friday, July 11, 2025

Disclaimer: The purpose of this briefing is to provide a **Regional** weather threat assessment and is meant as a general overview. County/Parish decision makers should consult their local NWS forecast offices for the latest detailed, local weather information. To find your local NWS forecast office, go to www.weather.gov/srh.



National Oceanic and
Atmospheric Administration
U.S. Department of Commerce

National Weather Service
Southern Region



Summary

- **Flash Flooding:**
 - Slight risk (level 2 of 4) over E NM, TX, OK, NW AR on Saturday and Sunday.
 - Marginal risk (level 1 of 4) over E NM, W TX, OK/TX Panhandles, OK, E AR, E LA today; SE NM, W/N TX, OK, NW AR on Monday.
 - Burn scars continue to be a Moderate risk with S NM ramping up Sunday as a Major risk.
- **Severe Storms:** Marginal risk (level 1 of 5) in the Southern Plains through Sunday. Main threat is winds.
- **River Flooding:** Rivers over TX and NM have receded below minor flood stage, but any localized heavy rainfall will result in quick responses where the ground is saturated.
- **Heat:** Hot temps in NM, W TX today, and then Monday into mid-late week over LA, AR, E TX.
- **Tropical:** No tropical impacts expected over the next 7 days.





FEMA Region 6 Threat Matrix

Next 7 days

	Friday, Jul 11	Saturday, Jul 12	Sunday, Jul 13	Monday, Jul 14	Tuesday, Jul 15	Wednesday, Jul 16	Thursday, Jul 17
Severe Storms	E NM, TX/OK Panhandles, NW OK, WTX	NM, N/W TX, OK, NW AR	SE NM, N/W TX, OK, AR				
Heavy Rain / Flash Flooding	E NM, WTX, OK/TX Panhandles, OK, E AR, E LA	E NM, TX, OK, NW AR	NTX, OK, W AR	SE NM, W/NTX, OK, NW AR			
Burn Scars	N NM	NM	S NM	NM			
	S NM		N NM				
Tropical							
Heat	NM, WTX			E LA	SE AR, LA	SE AR, LA	ETX, SE AR, LA
River Flooding							

Threat levels are based on FEMA Region 6 criteria. State or local threat level criteria may differ.

For more details on the colors in the threat matrix refer to the last slide in this briefing.

Risk Levels	Little to None	Minor	Moderate	Major	Extreme
-------------	----------------	-------	----------	-------	---------





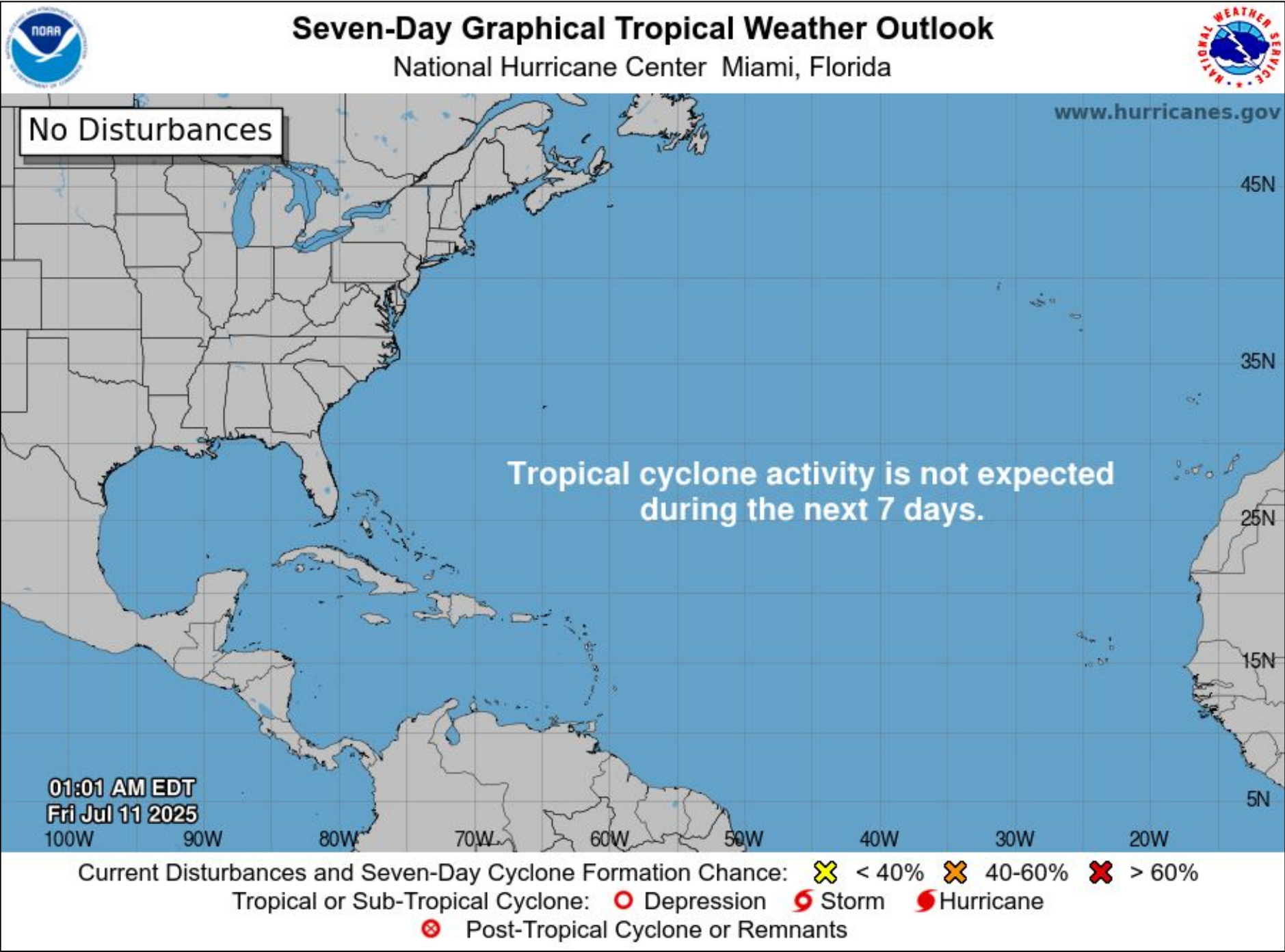
Tropical Weather Outlook – Atlantic/Gulf

Areas of Possible Development

Area	Chance of Development	Potential Impacts to FEMA 6

Active Tropical Cyclones

Storm	Potential Impacts to FEMA 6



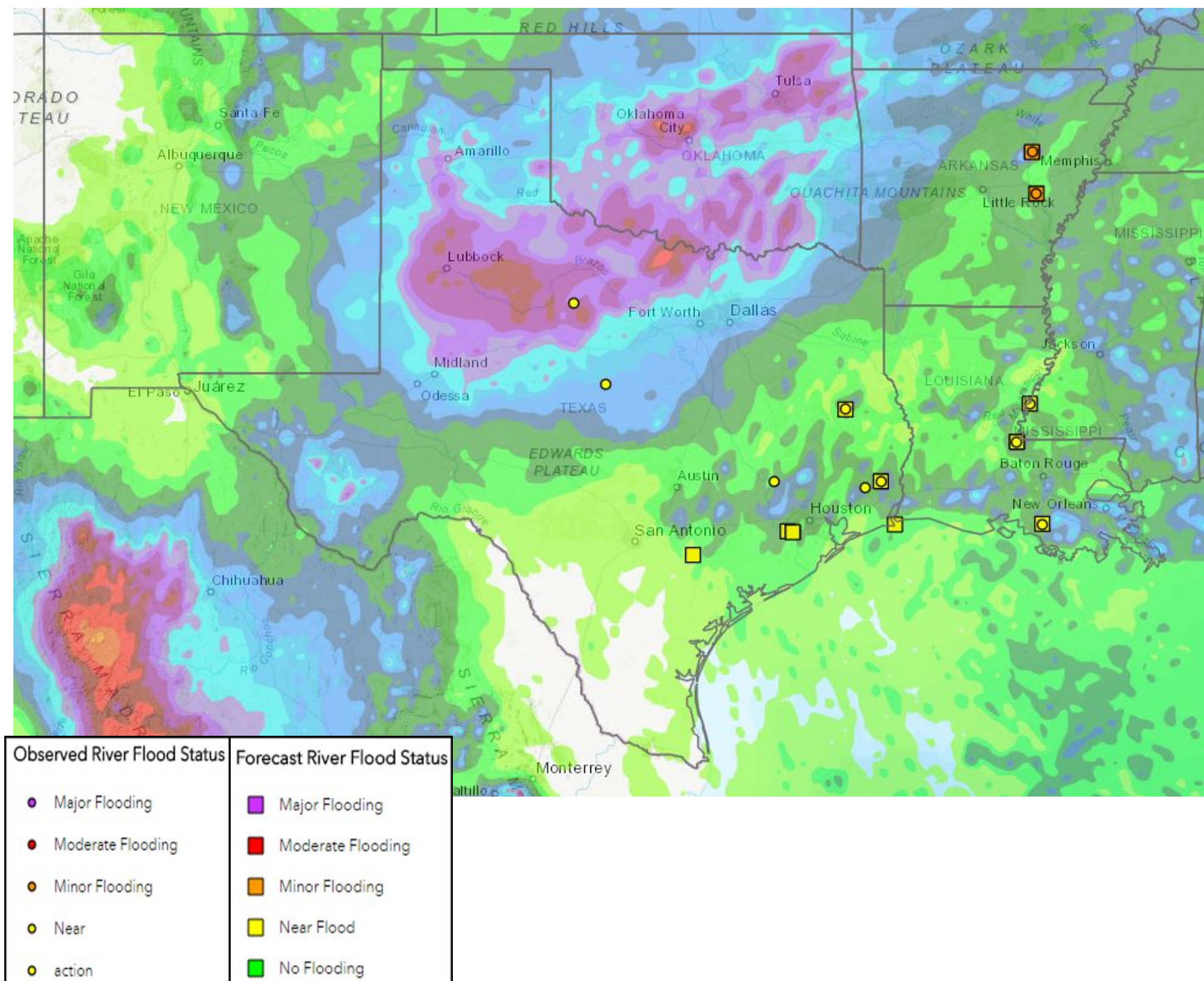
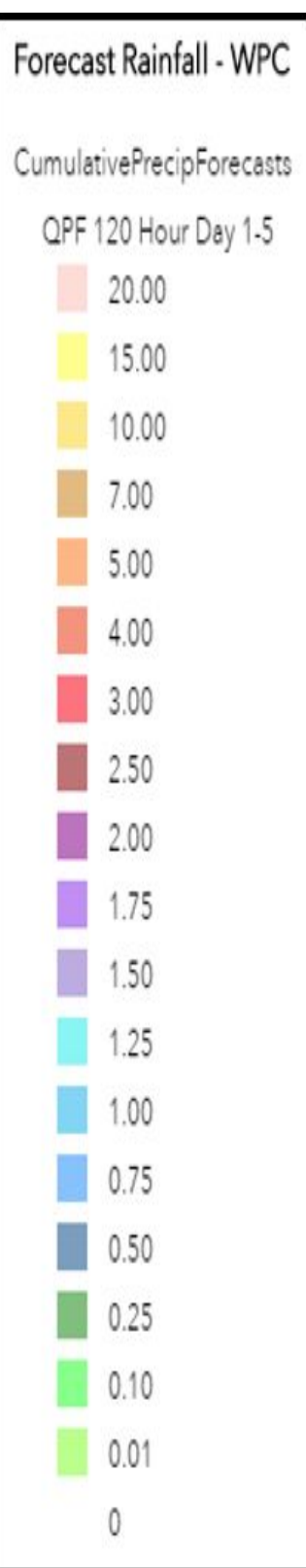
See <http://www.hurricanes.gov> for the latest on the tropics or any active storms





5-Day Precipitation Forecast & River Flood Status

Note: Even though the image displays 5 days of forecasted rainfall, river forecasts only include 1-2 days of rainfall



River levels in TX/NM have receded, but localized heavy rainfall could produce quick rises where ground is saturated.

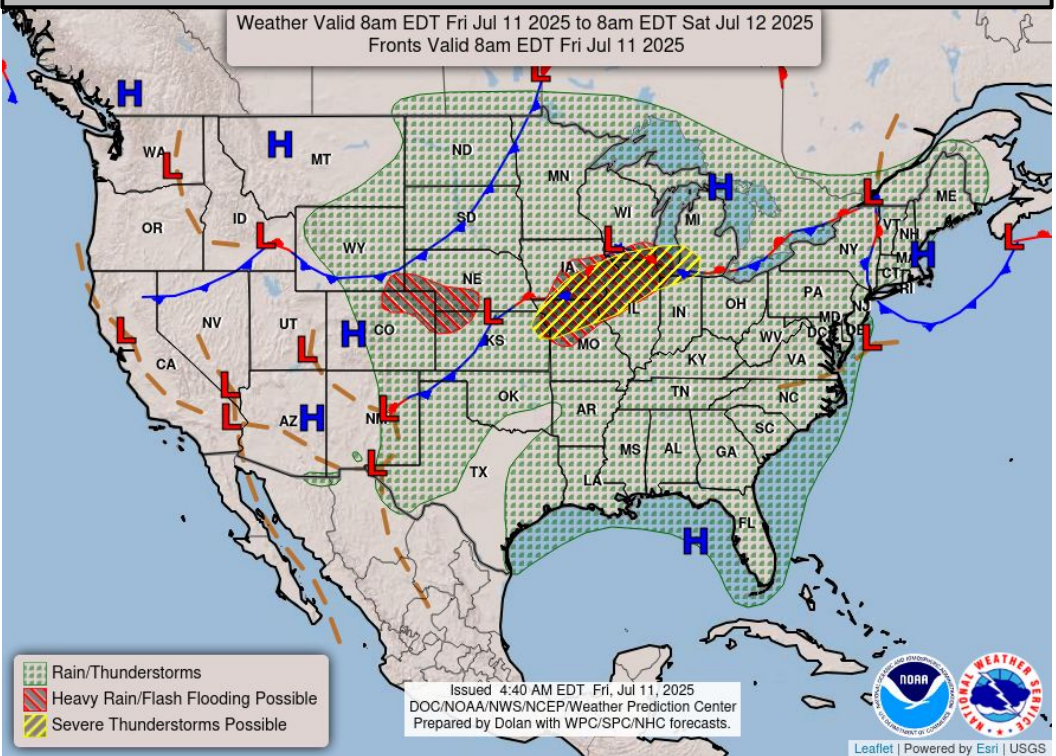
Note: Numerical levels (e.g. level 1 of 4) will not be assigned to riverine flooding due to the varying levels of impacts across flood categories.



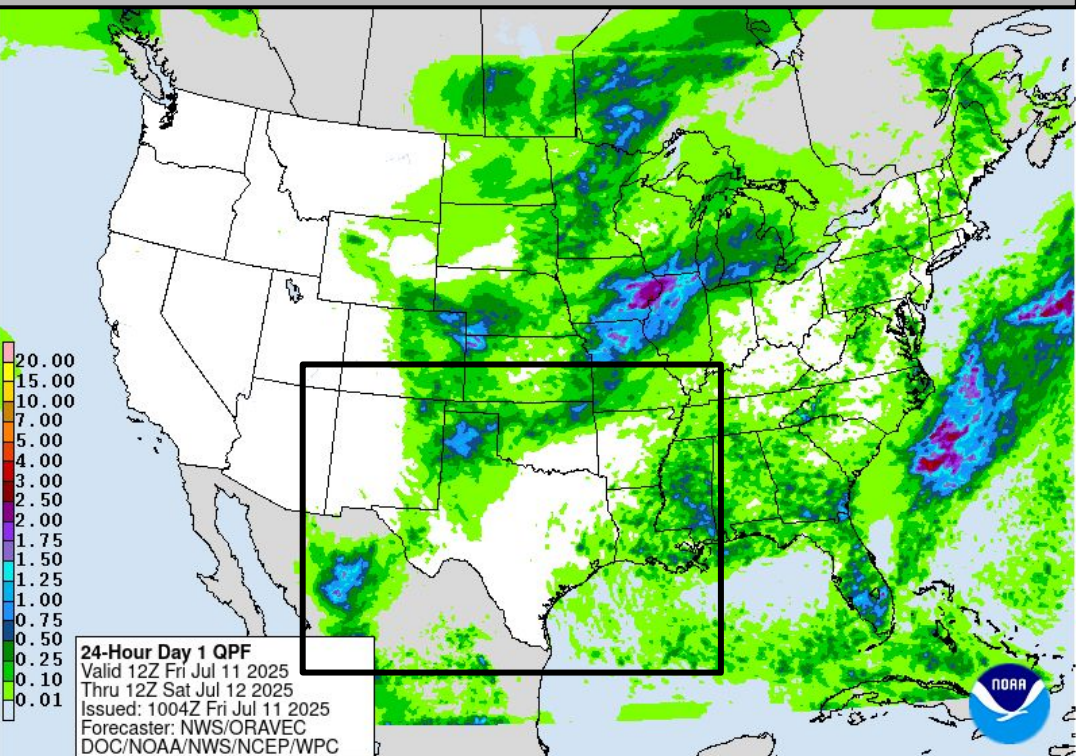


Today's Weather

Forecast Chart



Forecast Rainfall



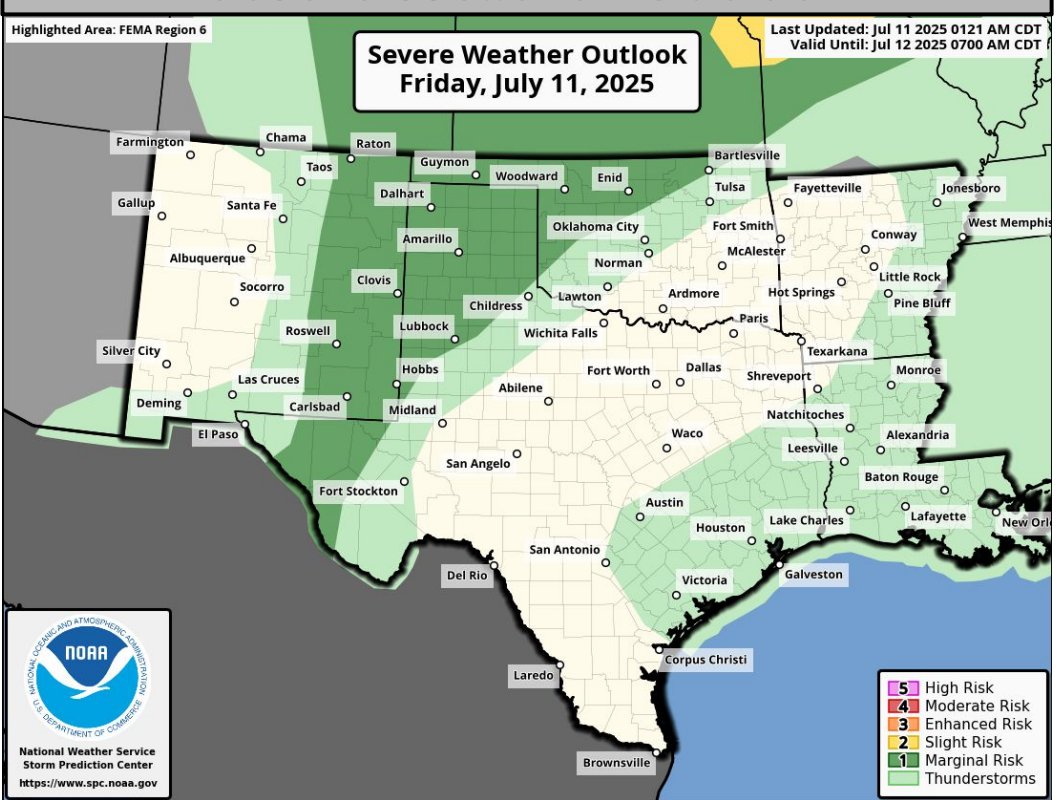
High temps of 100-110 in NM,W TX.

Marginal risk (level 1 of 4) of flash flooding in E NM,W TX, OK/TX Panhandles, OK, E AR, E LA.

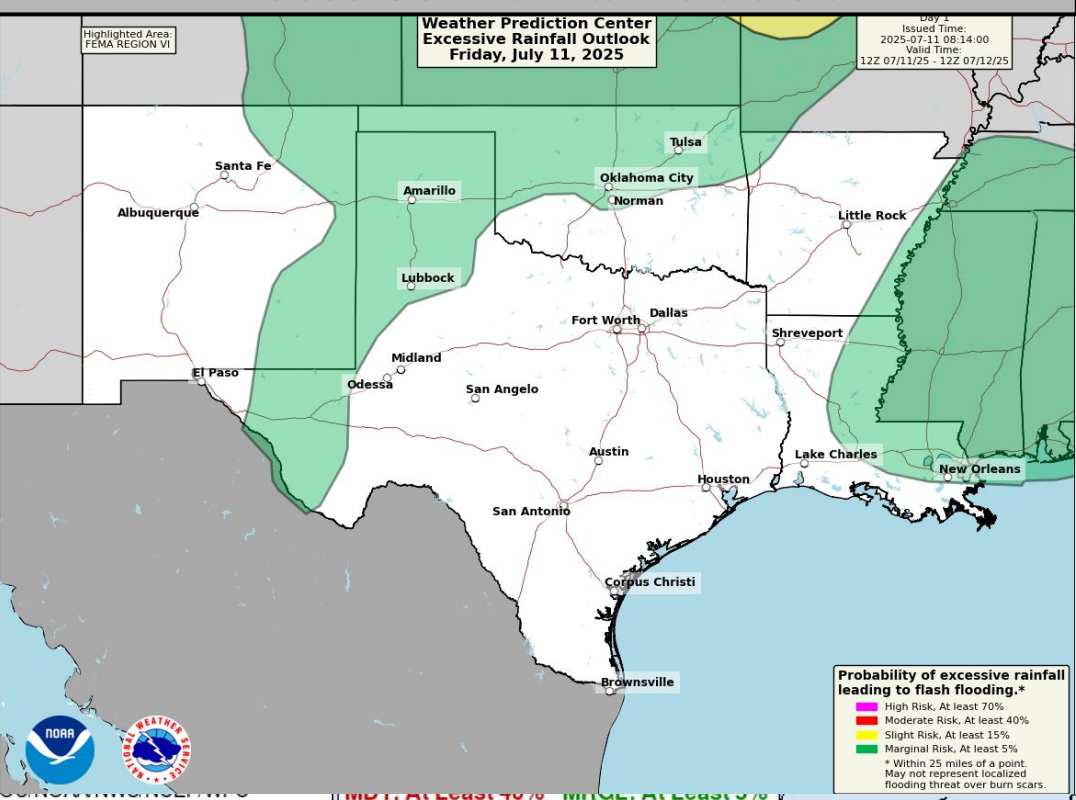
Marginal risk (level 1 of 5) of severe storms for the E NM, TX/OK Panhandles, NW OK,W TX.

****Burn Scar Flash Flooding information on Burn Scar Matrix slides****

Severe Weather Outlook



Excessive Rainfall Outlook

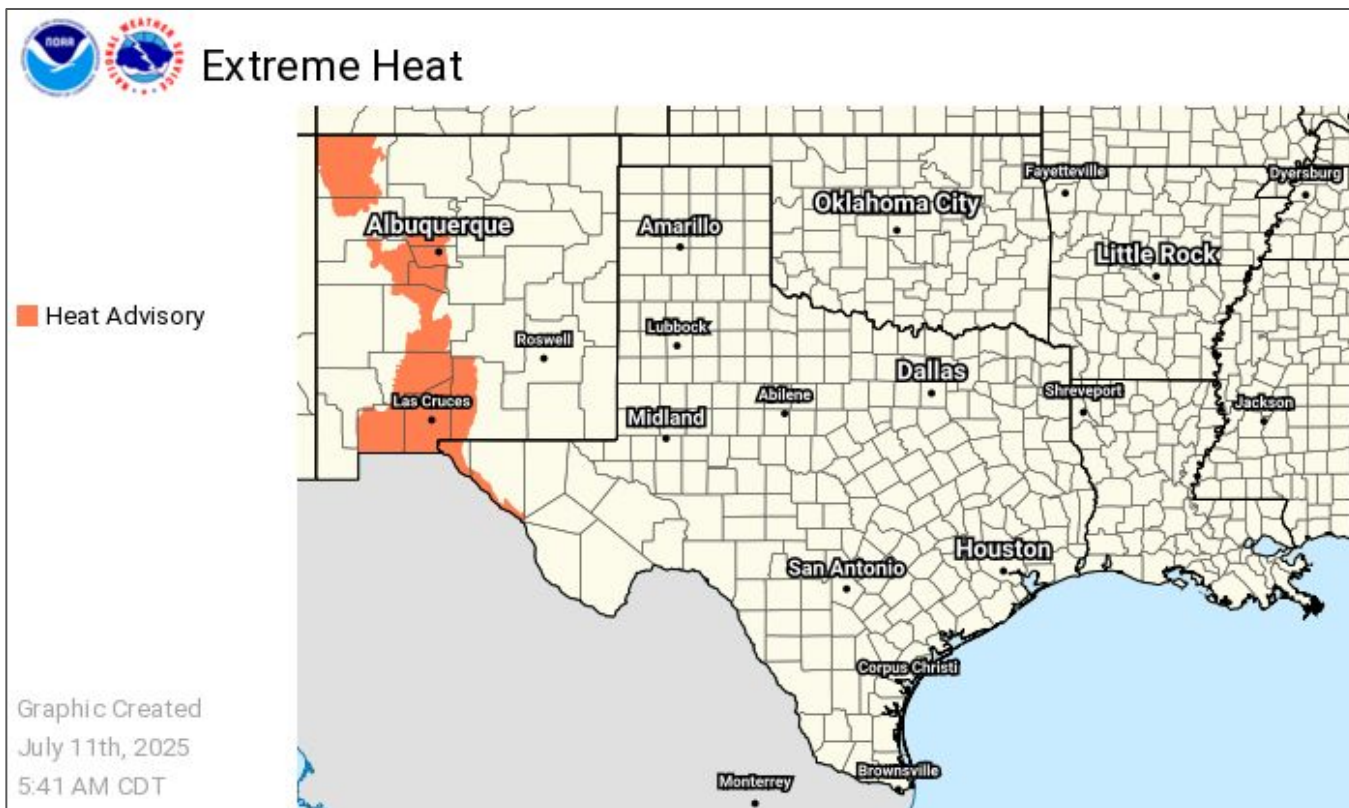
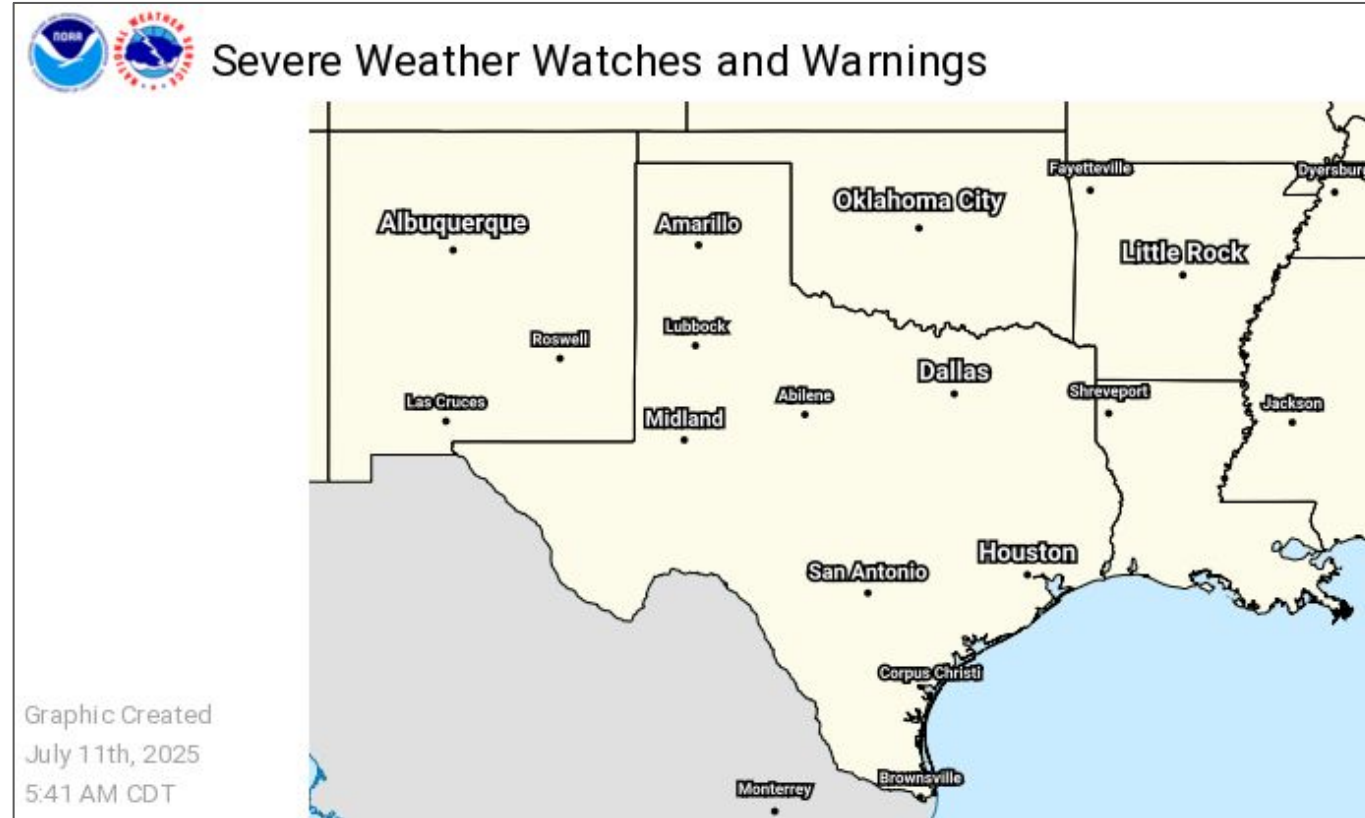




Watches, Warnings, and Advisories

Wind, Severe, Heat, and Flood Hazards

Heat Advisory for NM, W TX through 7 pm MDT.

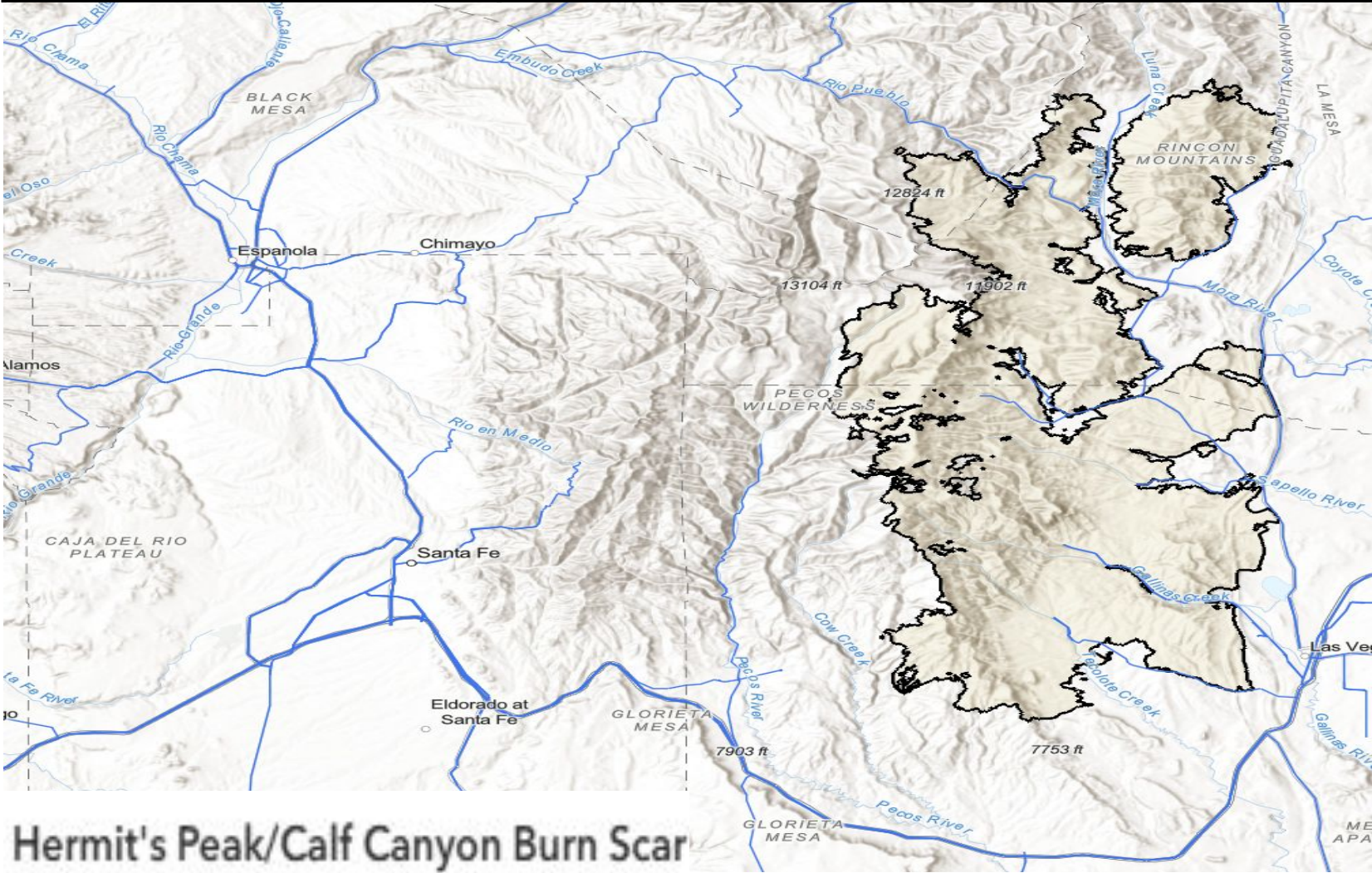




Burn Scar Debris Flow Risk - HPCC Scars New Mexico

Hermit's Peak/Calf Canyon Burn Scar

	Friday, Jul 11	Saturday, Jul 12	Sunday, Jul 13	Monday, Jul 14
Flash Flooding	Moderate	Moderate	Moderate	Moderate
Timing - CDT	2-6pm	2-10pm	Afternoon/Evening	Afternoon/Evening



Hermit's Peak/Calf Canyon Burn Scar

Little to None	No Flash Flood Threat
Minor (level 1 of 4)	Slight Risk of Flash Flooding
Moderate (level 2 of 4)	Probability of Flash Flooding Issuance 40% to 60%
Major (level 3 of 4)	Flood Watch Issued OR Debris Flow Probability > 50%
Extreme (level 4 of 4)	Life Threatening Flash Flooding Likely - Historic Type Day
<ul style="list-style-type: none">WPC's Excessive Rainfall Outlook is <i>Not Applicable</i> to burn scars.	

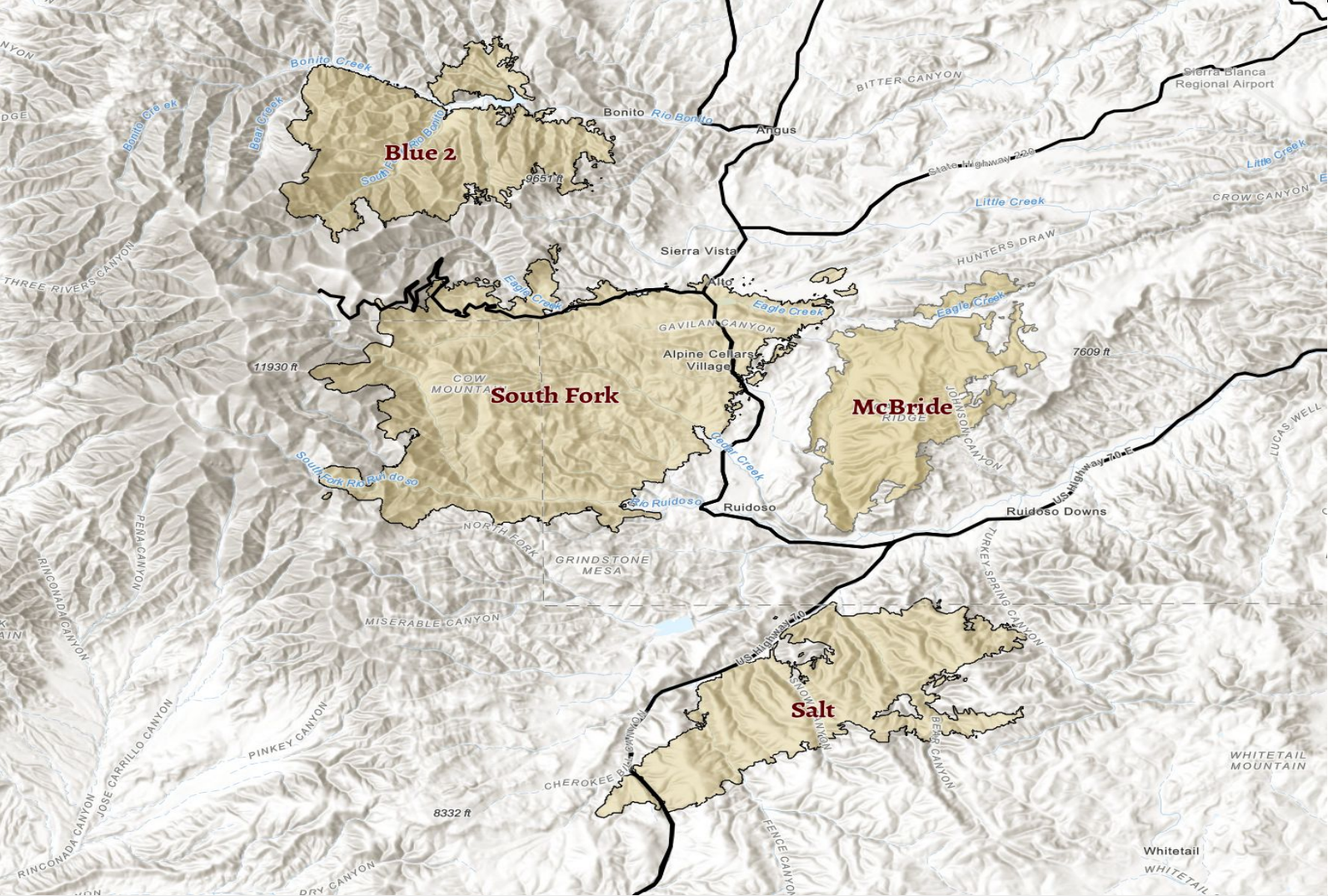




Burn Scar Debris Flow Risk - Ruidoso, New Mexico

Sacramento Complex

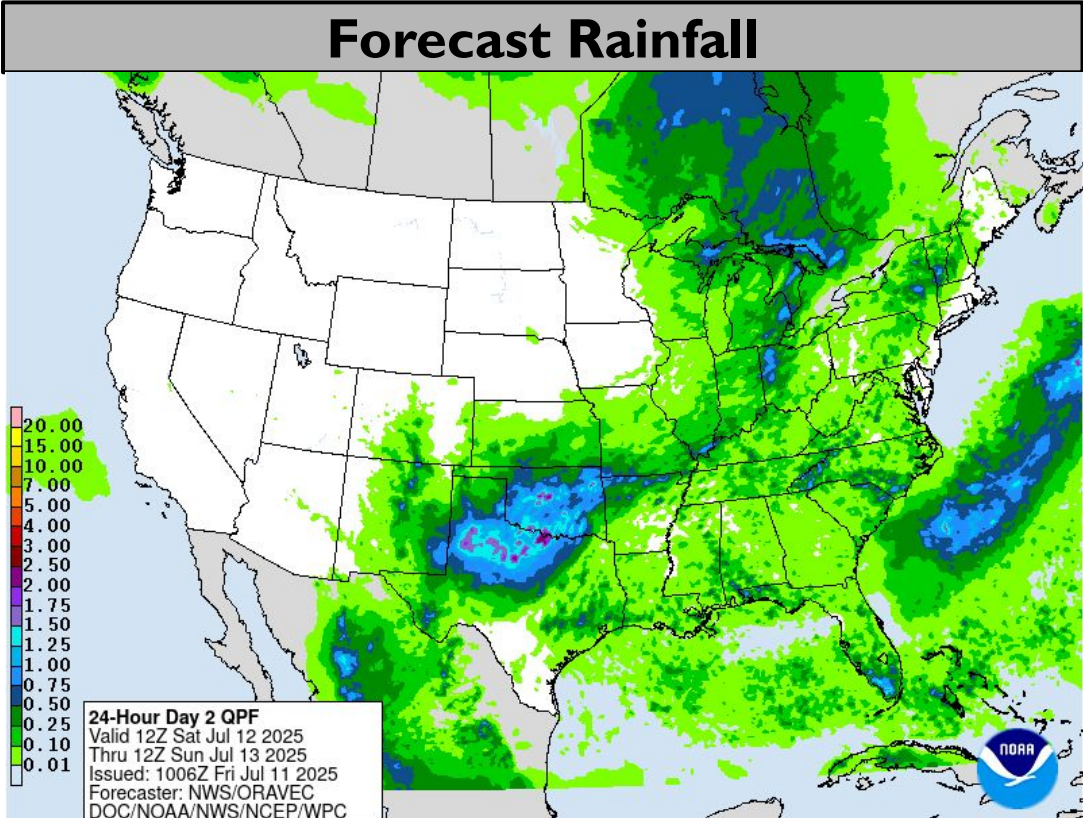
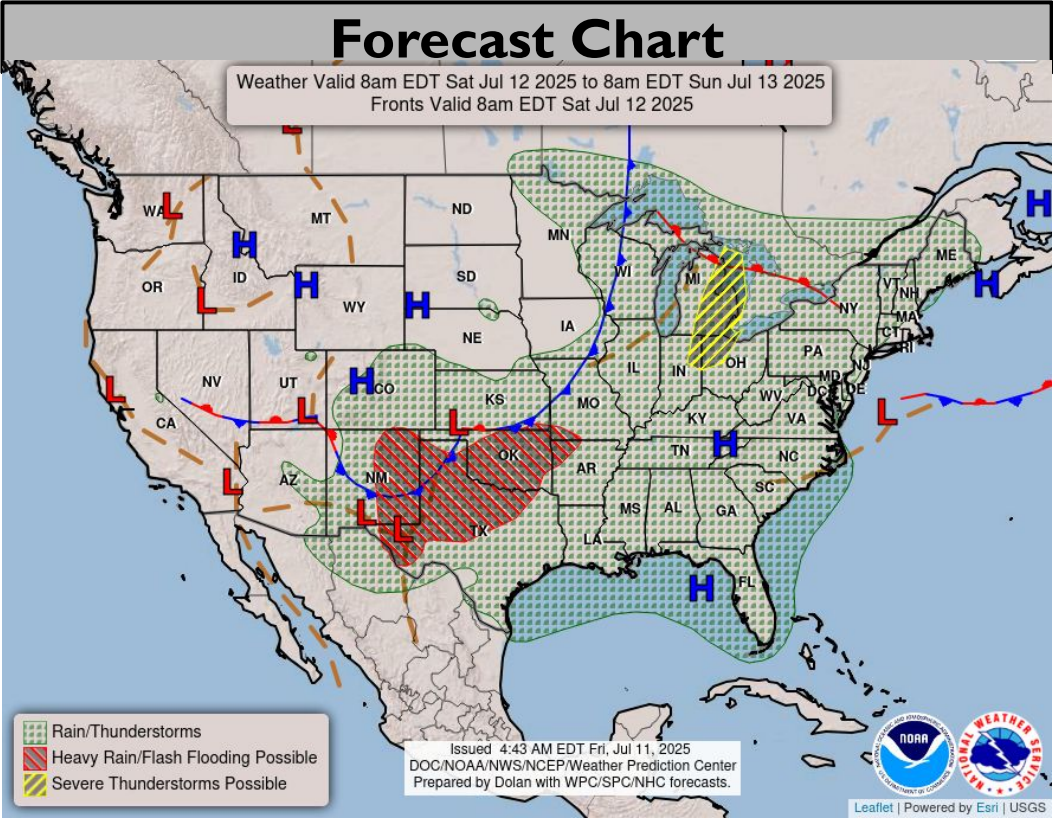
	Friday, Jul 11	Saturday, Jul 12	Sunday, Jul 13	Monday, Jul 14
Flash Flooding	Minor	Moderate	Major	Moderate
Timing - CDT	2-6pm	2-2am	Afternoon/Evening	Afternoon/Evening



Little to None	No Flash Flood Threat
Minor (level 1 of 4)	Slight Risk of Flash Flooding
Moderate (level 2 of 4)	Probability of Flash Flooding Issuance 40% to 60%
Major (level 3 of 4)	Flood Watch Issued OR Debris Flow Probability > 50%
Extreme (level 4 of 4)	Life Threatening Flash Flooding Likely - Historic Type Day
<ul style="list-style-type: none">WPC's Excessive Rainfall Outlook is <i>Not Applicable</i> to burn scars.*Note* 2nd year burn scars can be <u>more dangerous</u> than year 1.	

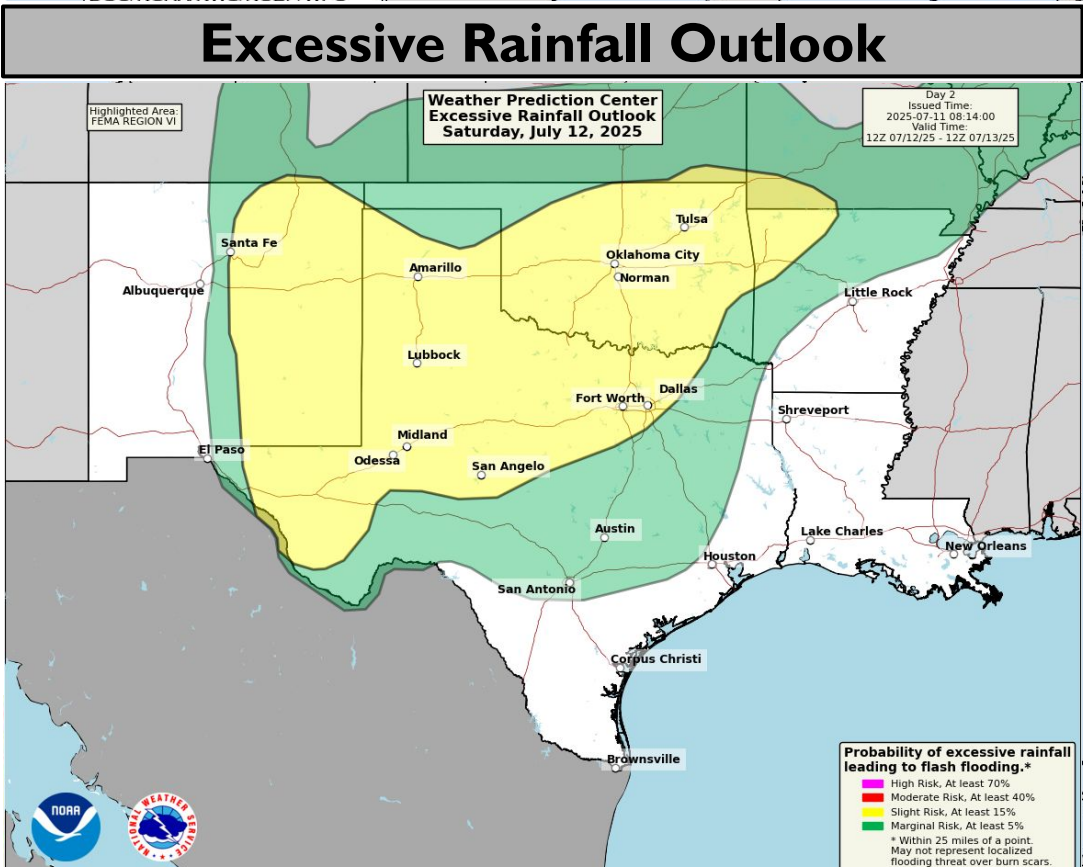
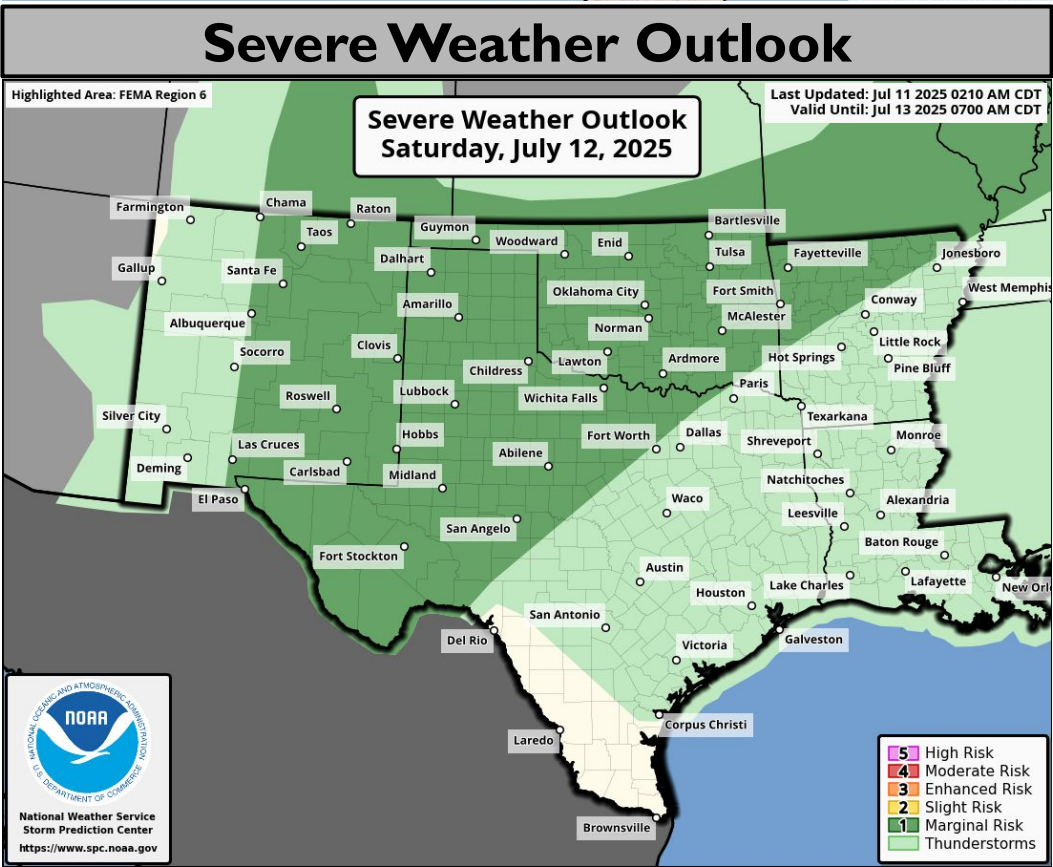


Tomorrow's Weather



Slight risk (level 2 of 4) of flash flooding for E NM, TX, OK, NW AR.

Marginal risk (level 1 of 5) for severe storms in NM, N/W TX, OK, NW AR.

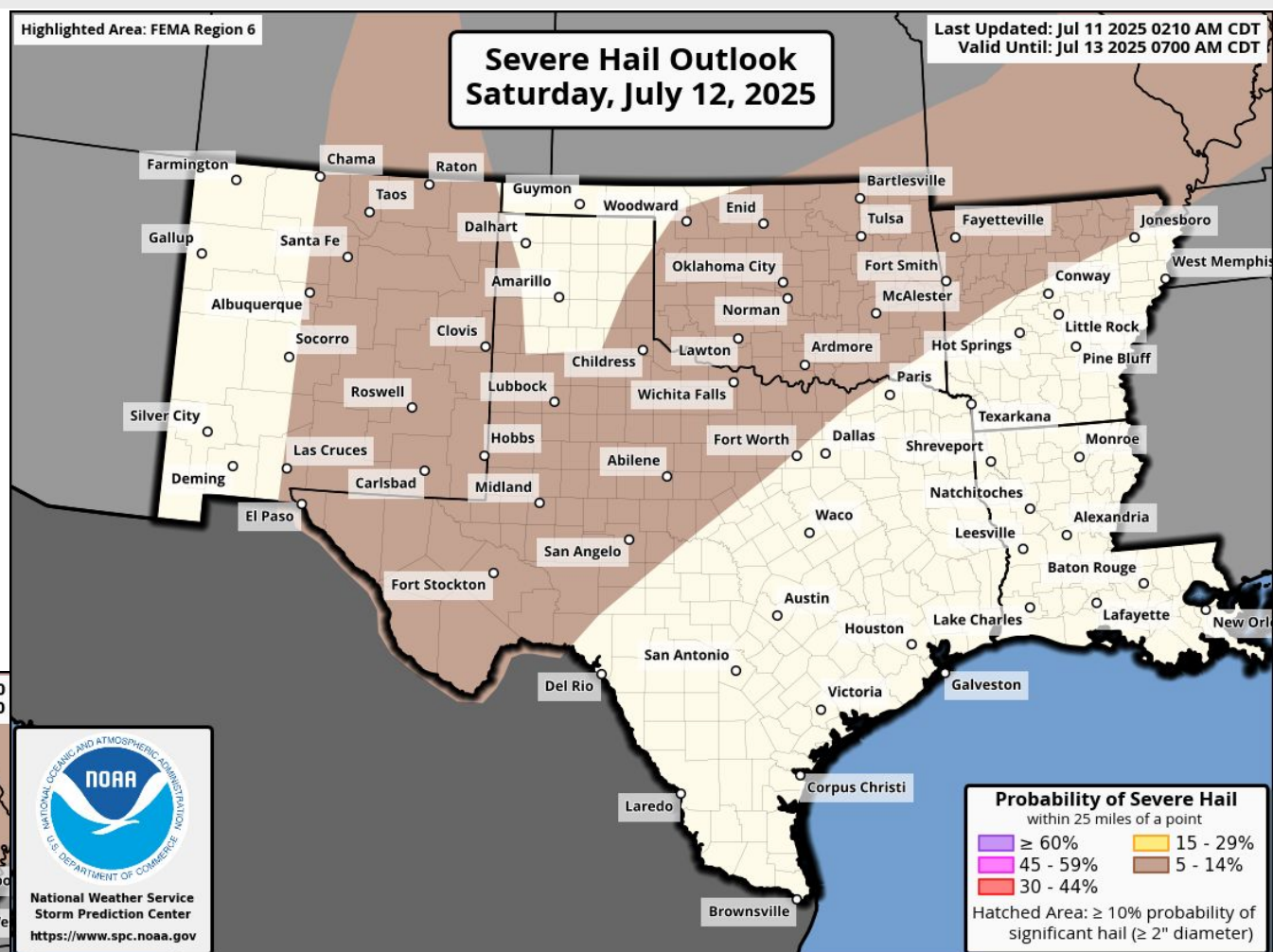
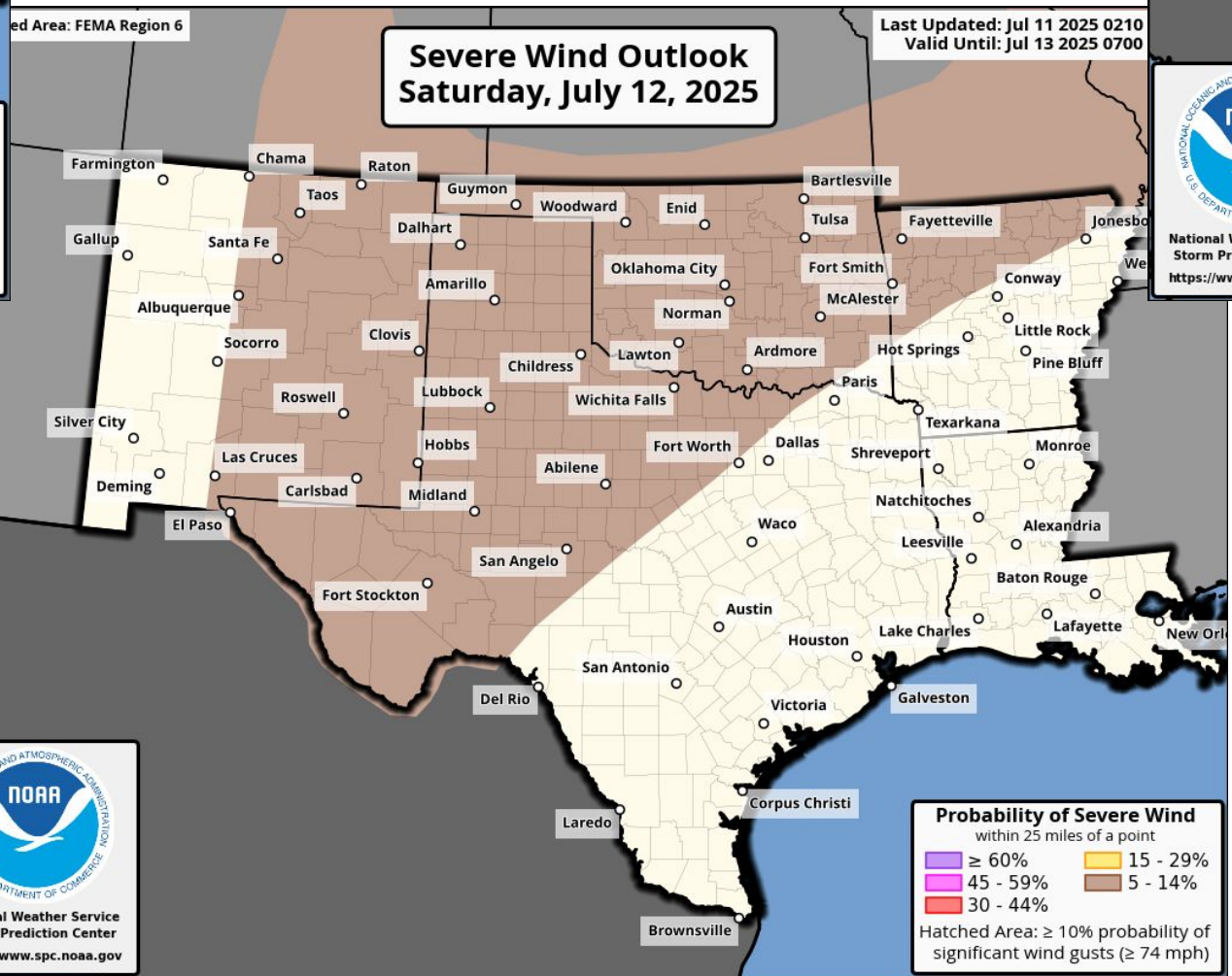
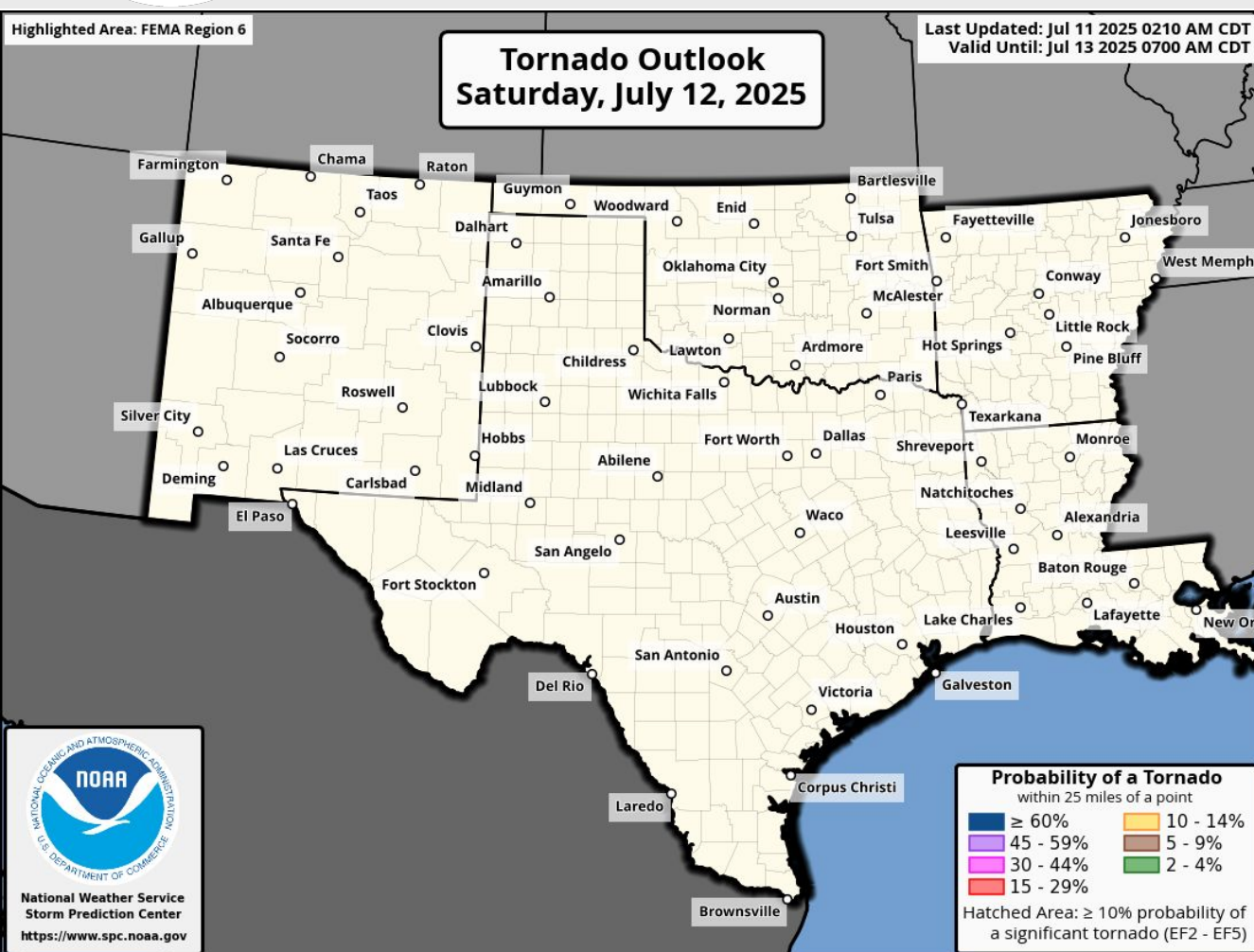


Burn Scar Flash Flooding information on Burn Scar Matrix slides





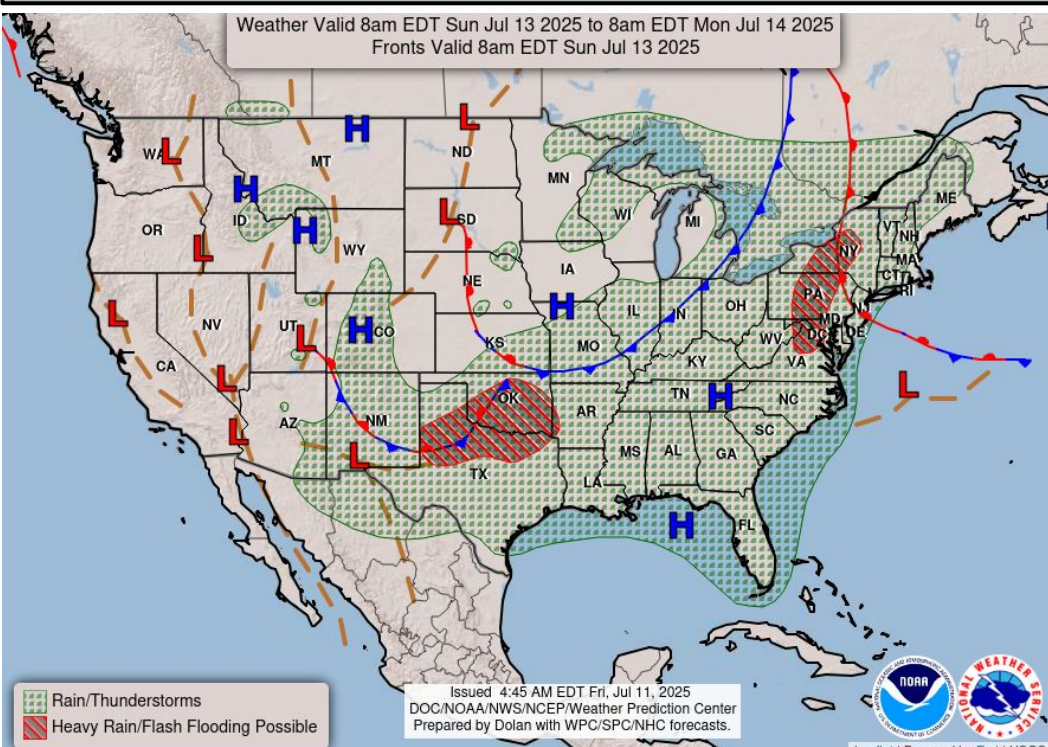
Tomorrow's Tornado & Severe Wind / Hail Probabilities



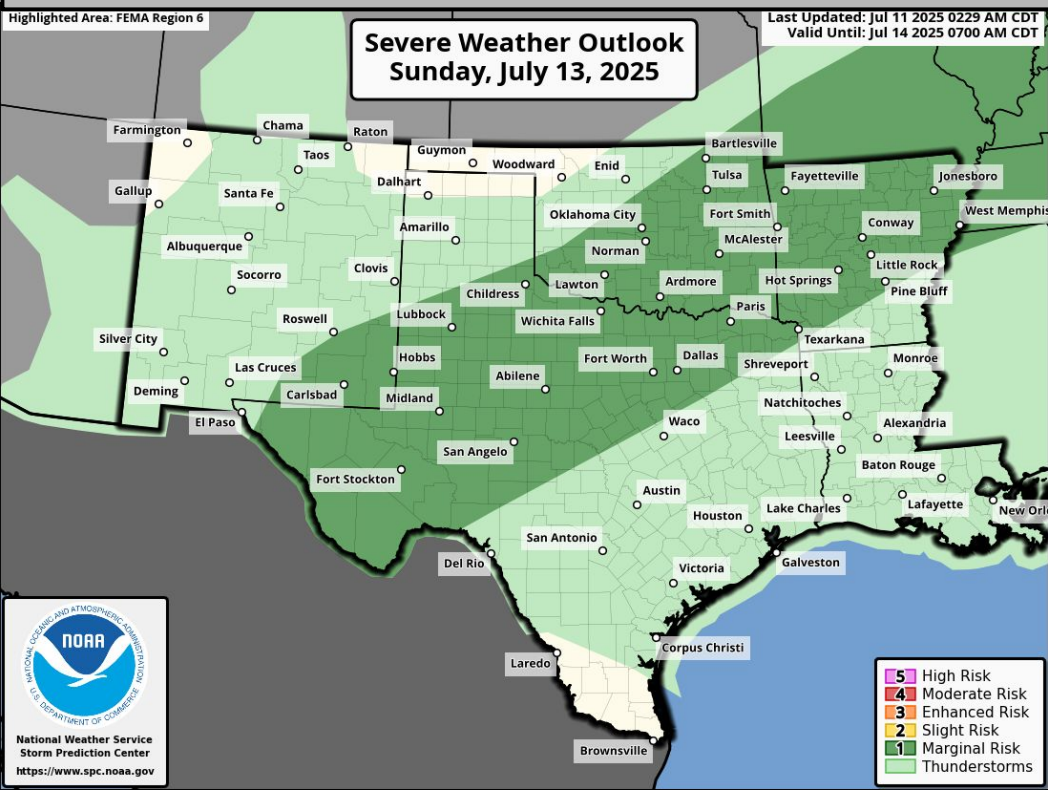


Sunday's Weather

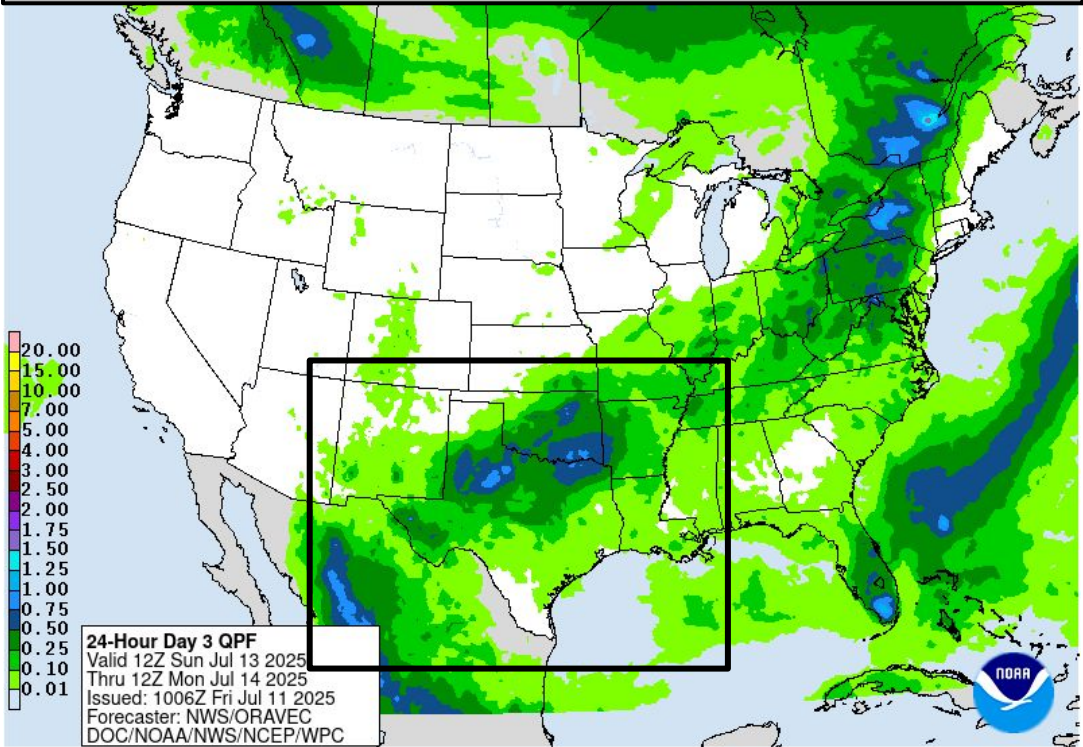
Forecast Chart



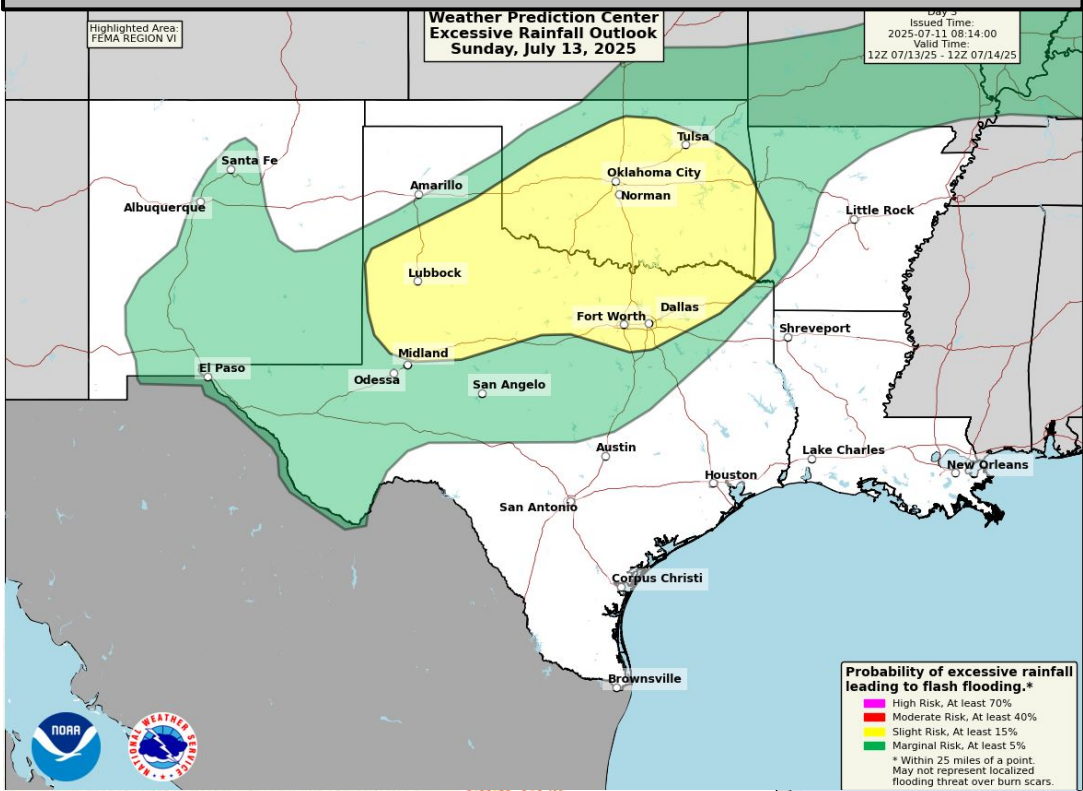
Severe Weather Outlook



Forecast Rainfall



Excessive Rainfall Outlook



Slight risk (level 2 of 4) of flash flooding in N TX, OK, W AR.

Marginal risk (level 1 of 5) for severe storms in SE NM, N/W TX, OK, AR.

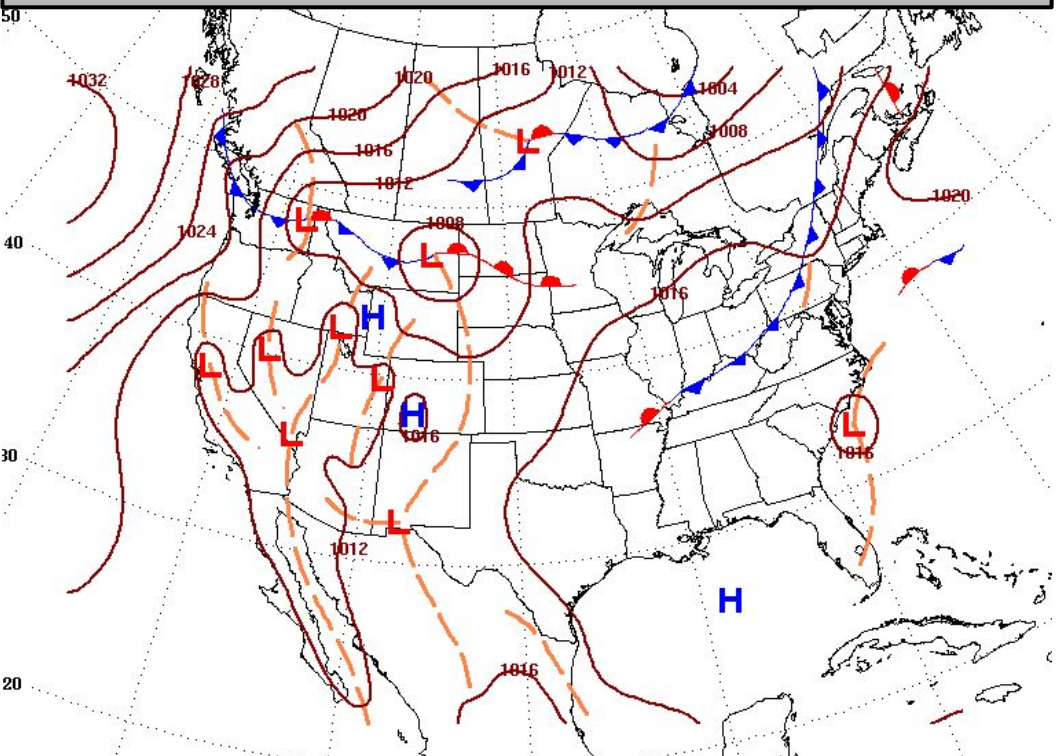
****Burn Scar Flash Flooding information on Burn Scar Matrix slides****



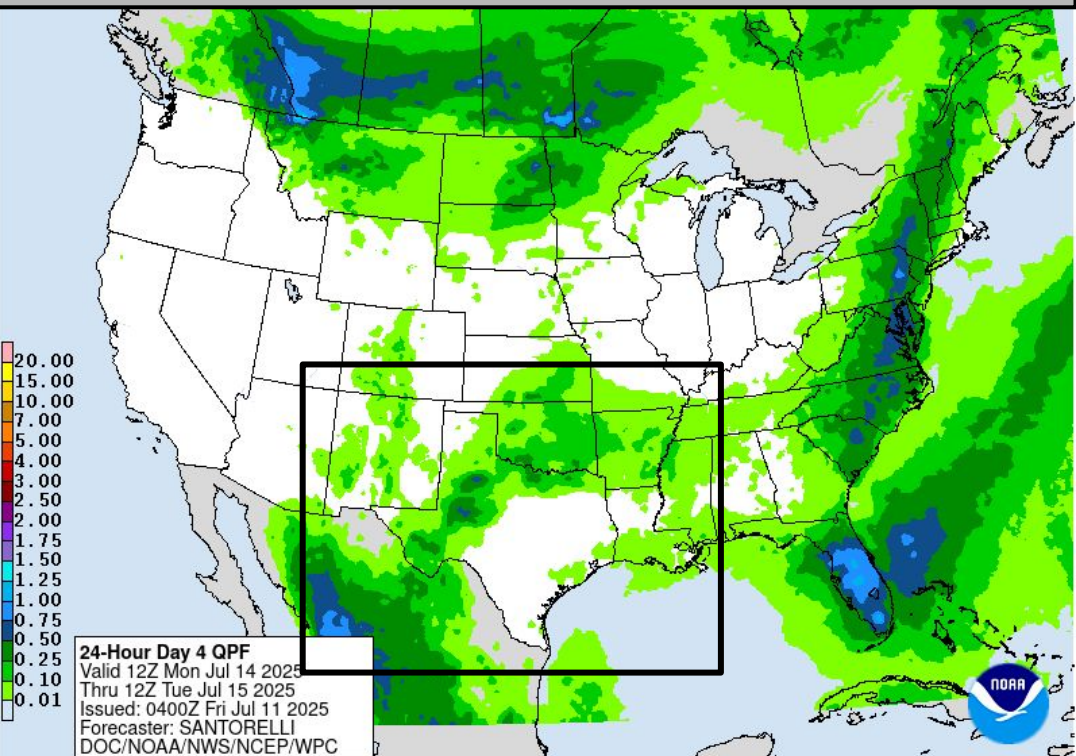


Monday's Weather

Forecast Chart



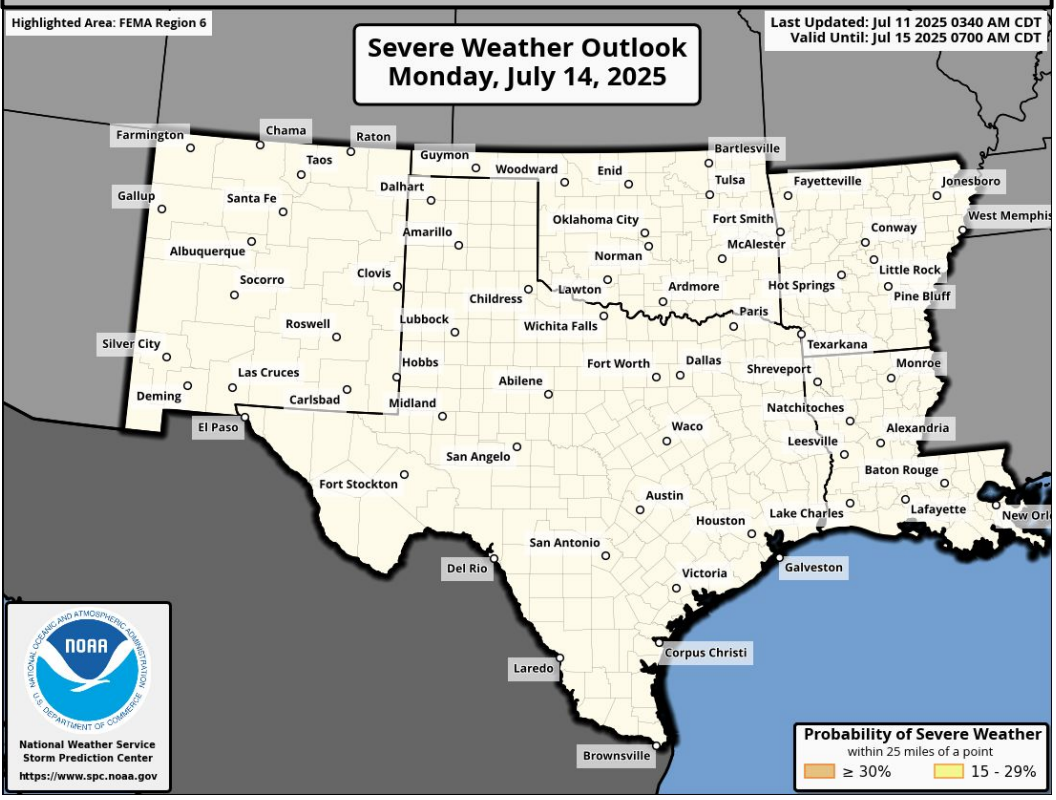
Forecast Rainfall



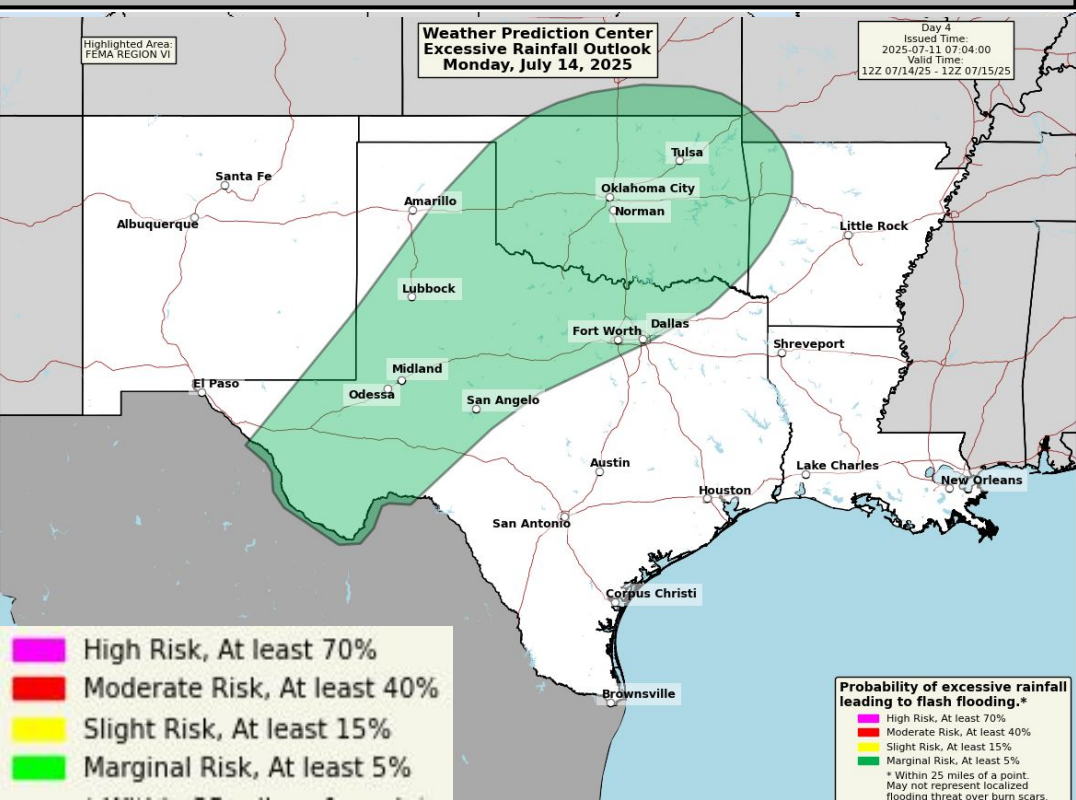
Heat Advisories likely with temps feeling like 100-110 in E LA.

Marginal risk (level 1 of 4) of flash flooding in SE NM, W/NTX, OK, NW AR.

Severe Weather Outlook



Excessive Rainfall Outlook

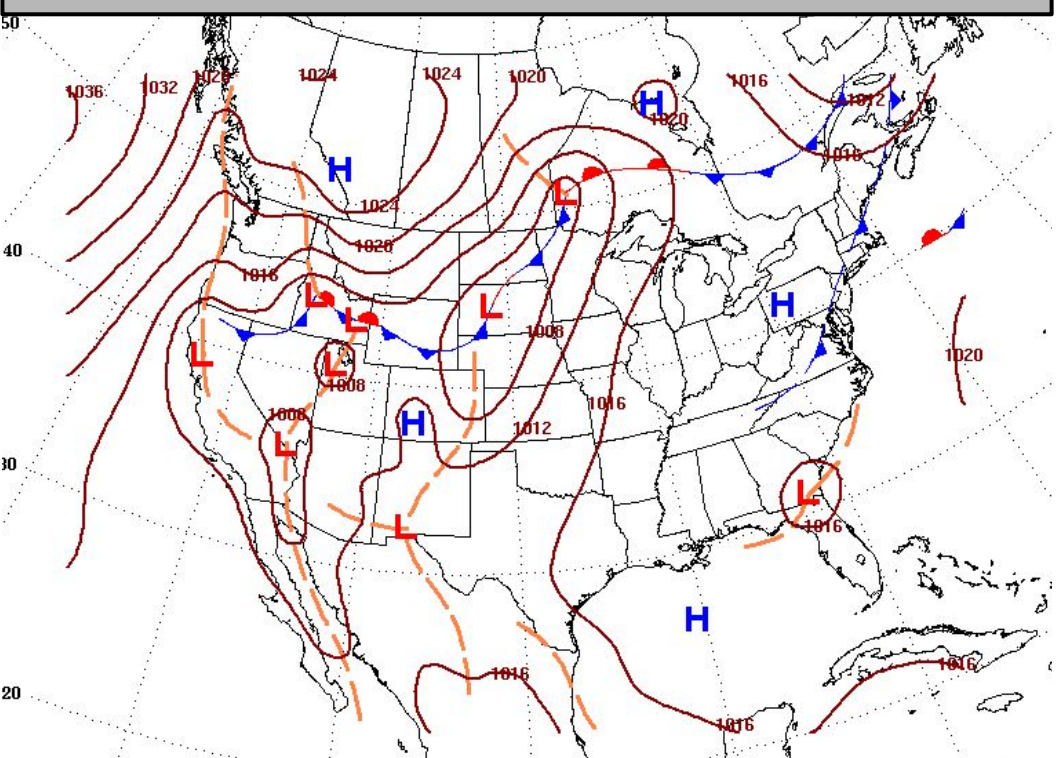


****Burn Scar Flash Flooding information on Burn Scar Matrix slides****

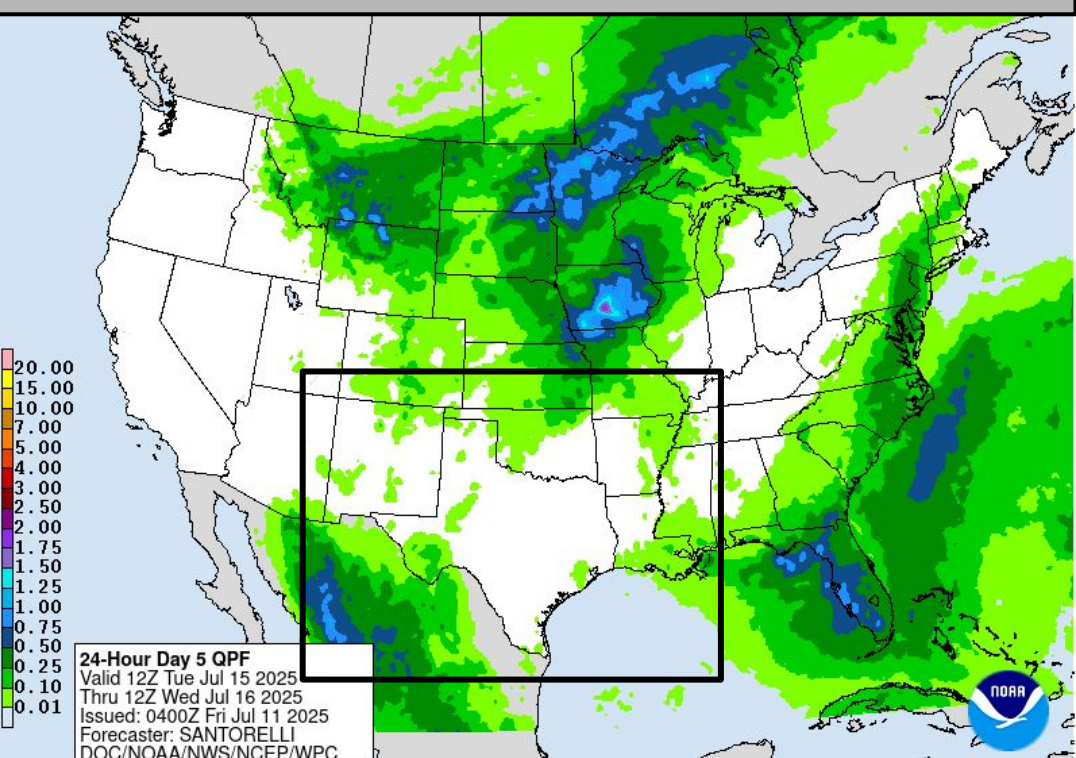


Tuesday's Weather

Forecast Chart

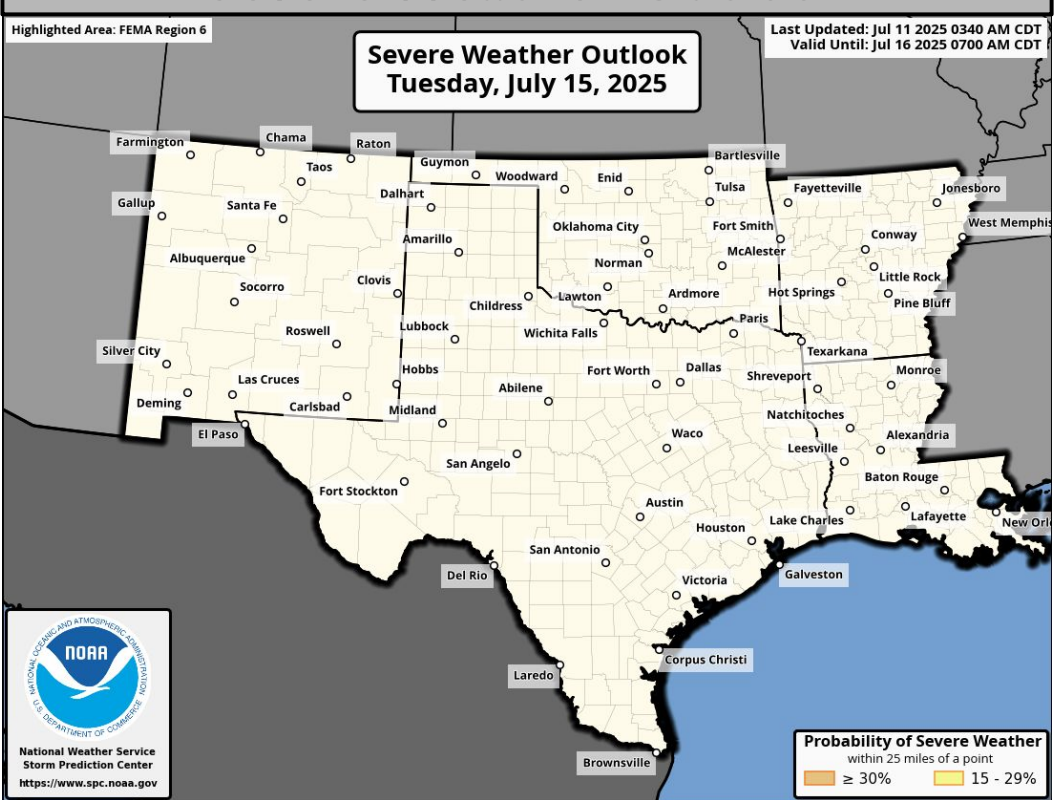


Forecast Rainfall

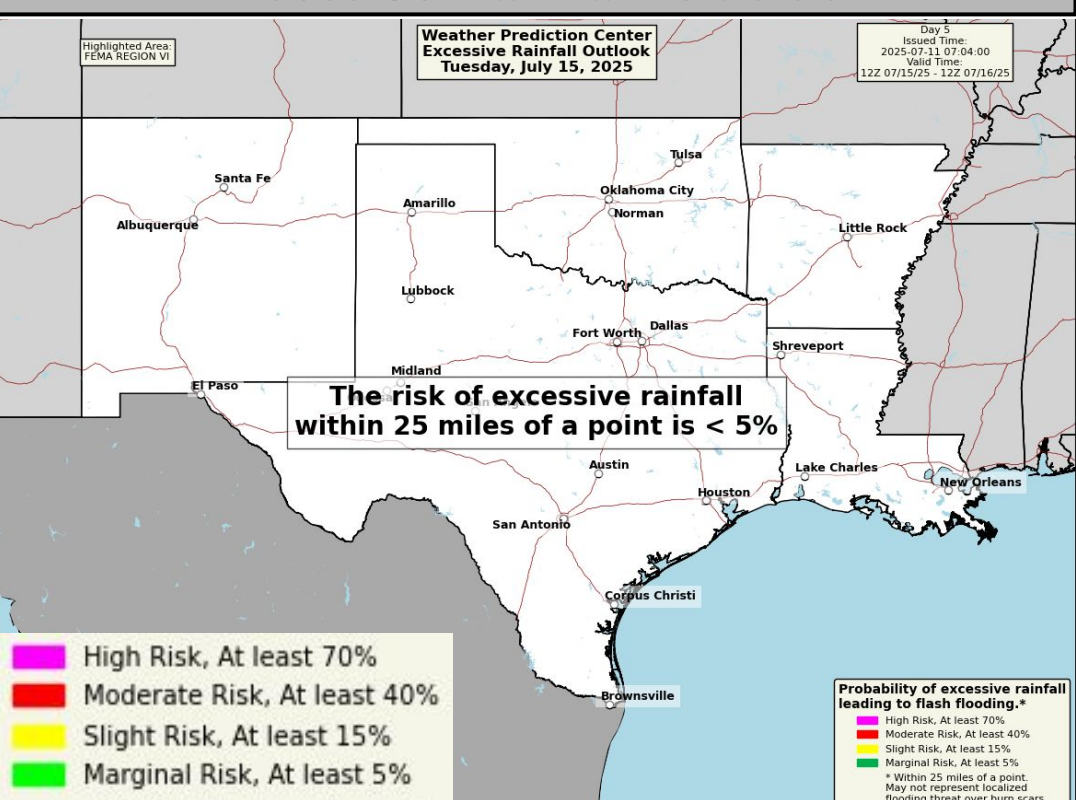


Heat Advisories likely with temps feeling like 100-110 in SE AR, LA.

Severe Weather Outlook



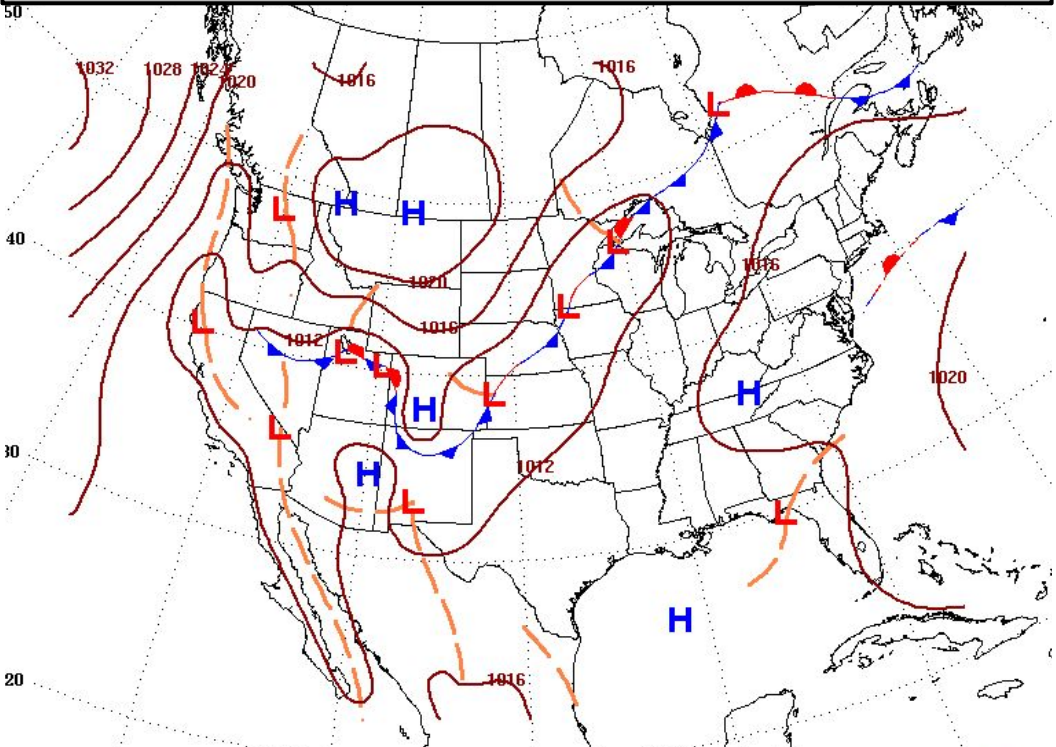
Excessive Rainfall Outlook





Wednesday's Weather

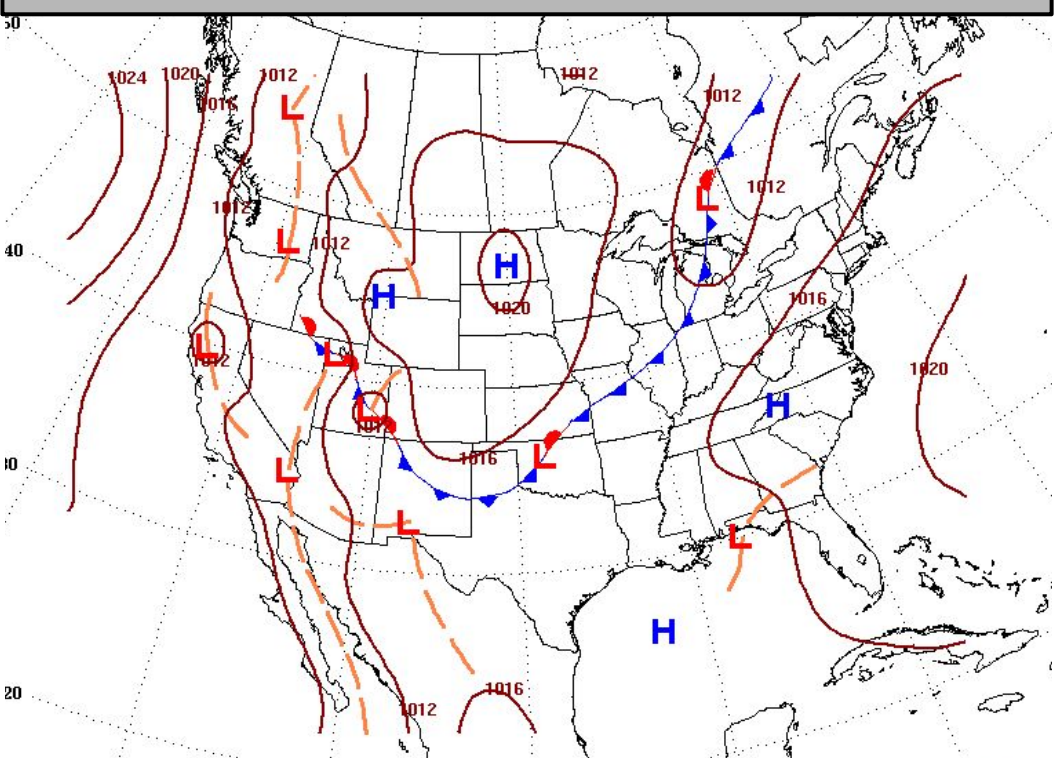
Forecast Chart



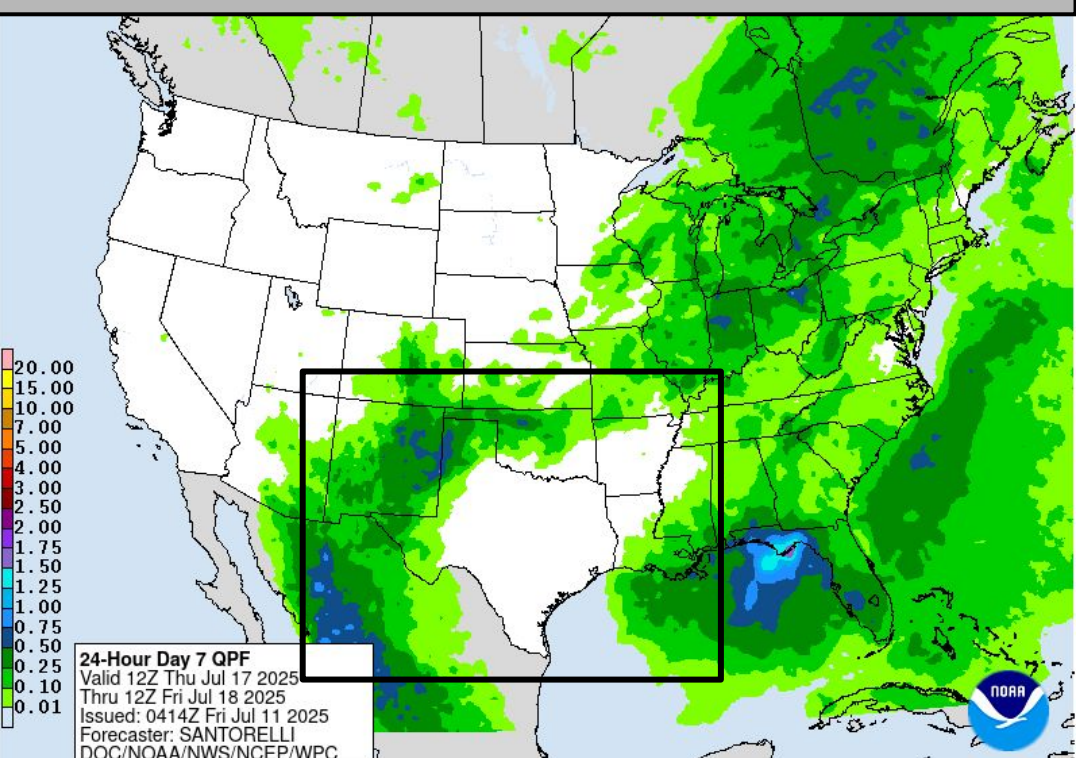


Thursday's Weather

Forecast Chart

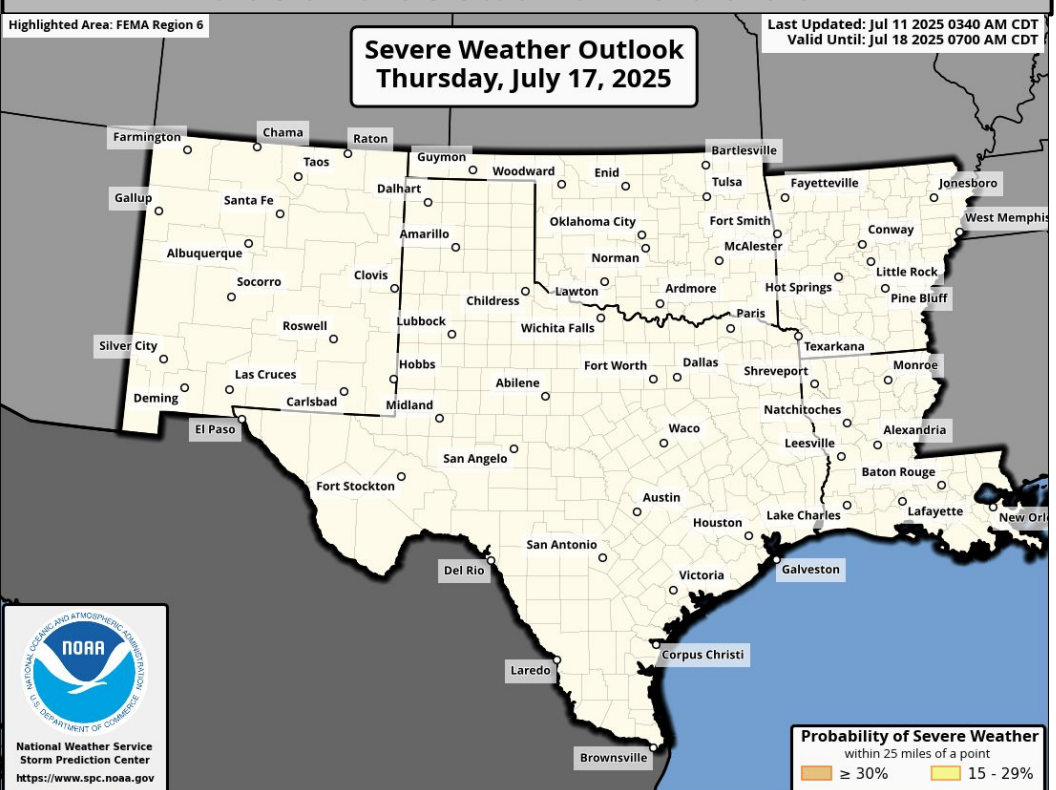


Forecast Rainfall



Heat Advisories likely with temps feeling like 100-110 in ETX, SE AR, LA.

Severe Weather Outlook

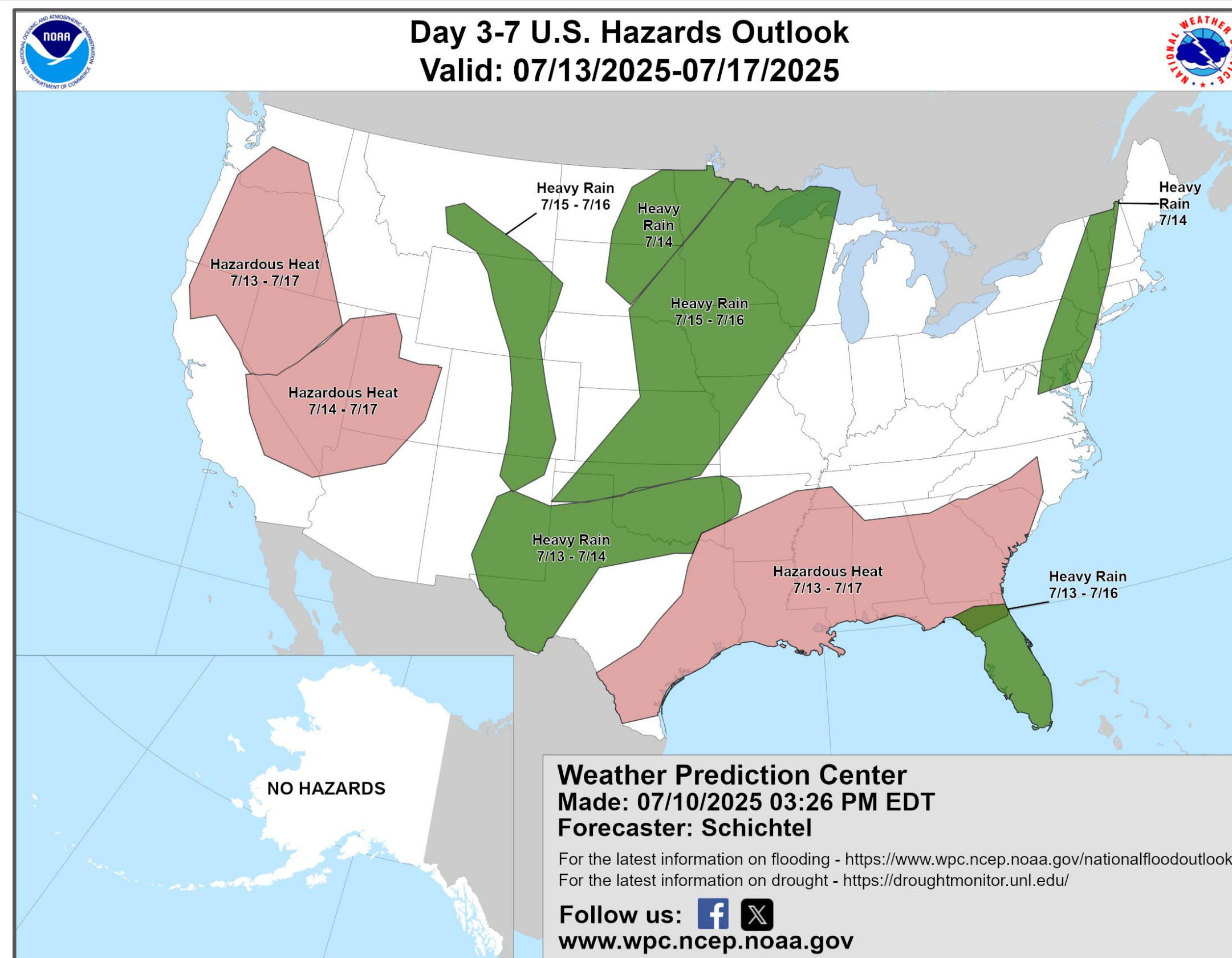


Excessive Rainfall Outlooks not available beyond Day 5





“Day 3-7” Hazards Outlook



NOTE: These outlooks are issued in the afternoon and only issued on weekdays. Because of that and the fact that these slides are issued in the mornings:

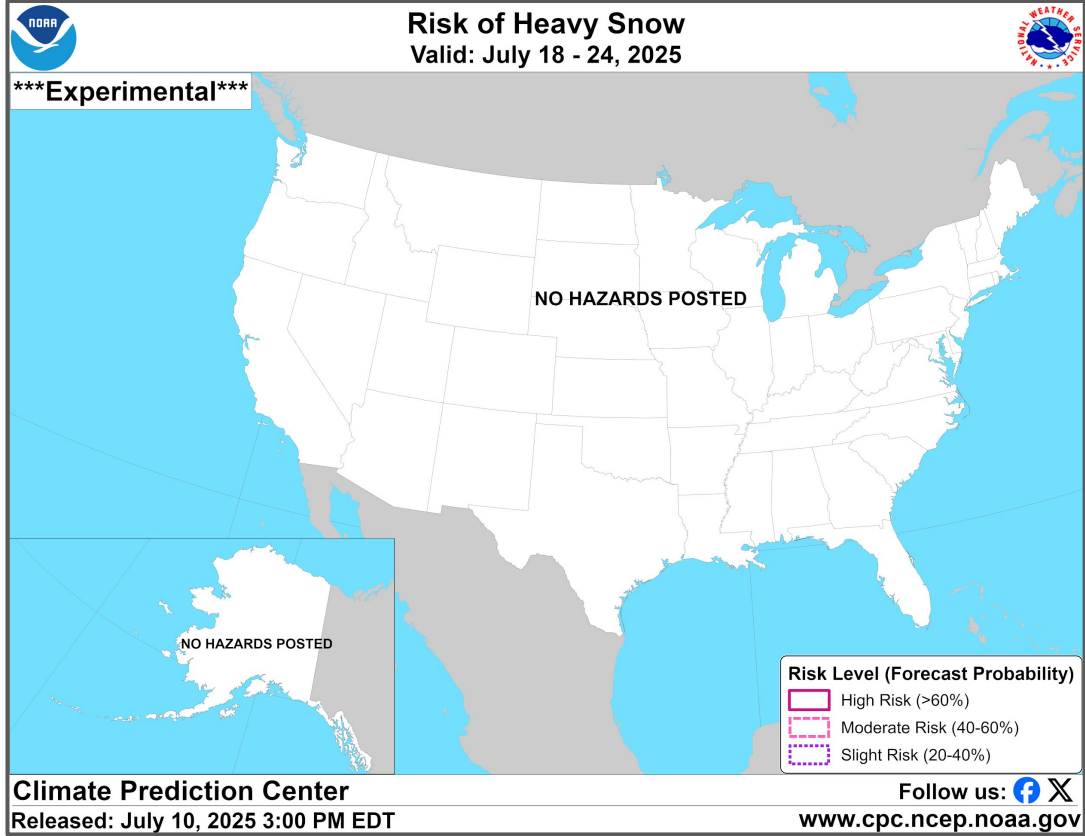
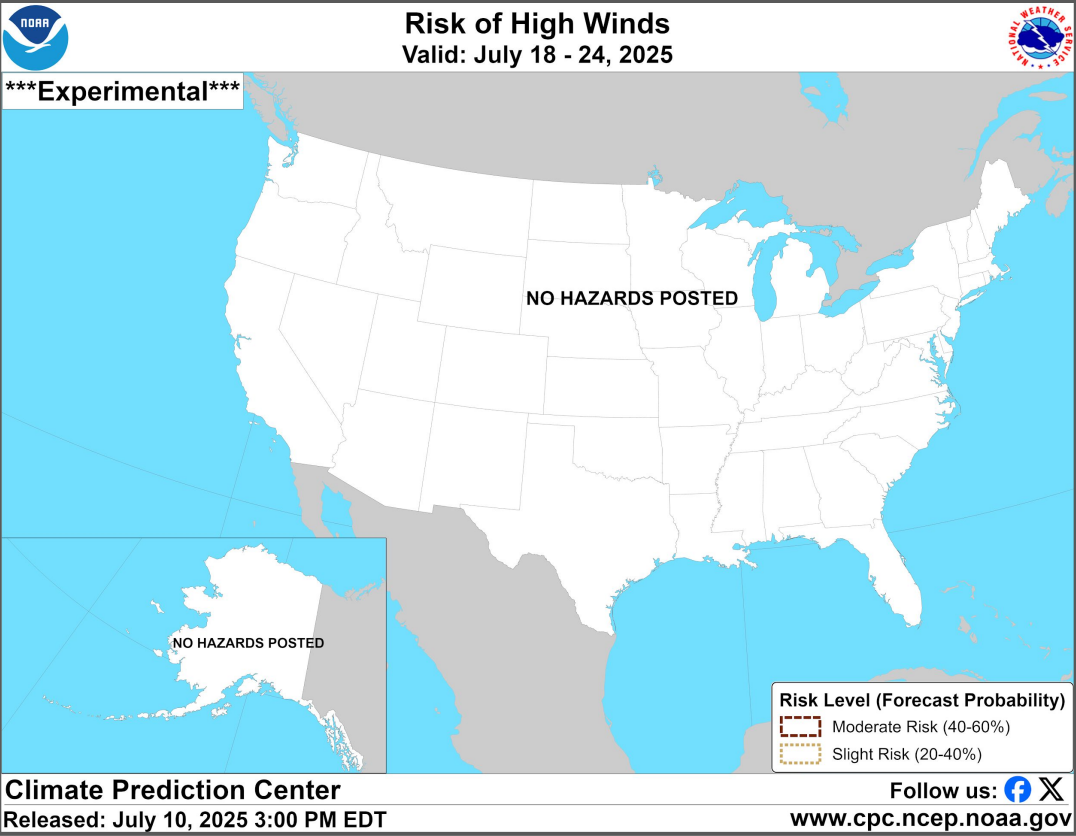
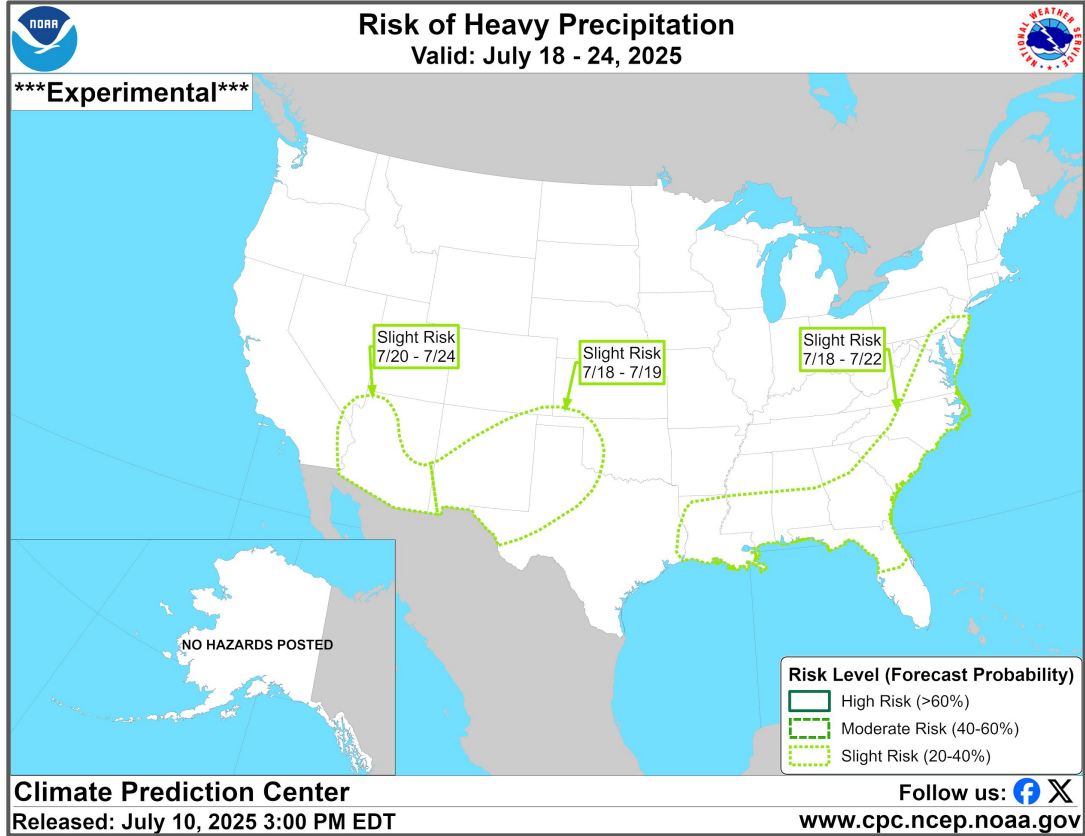
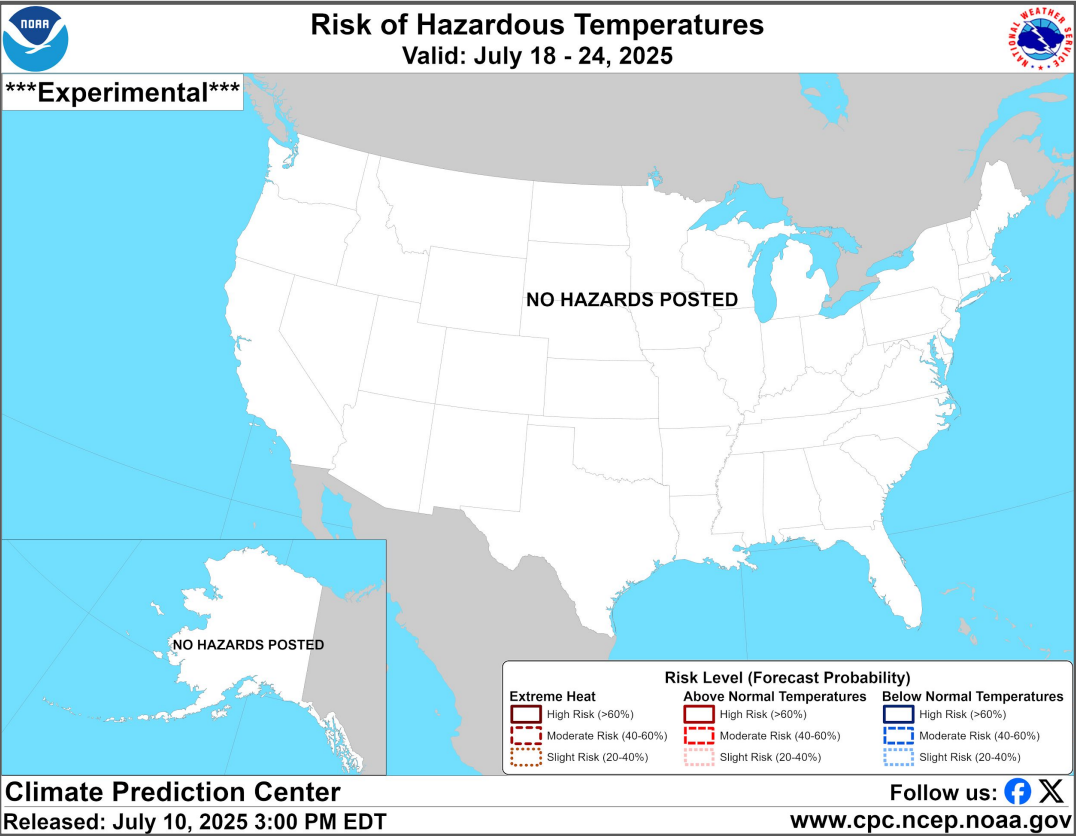
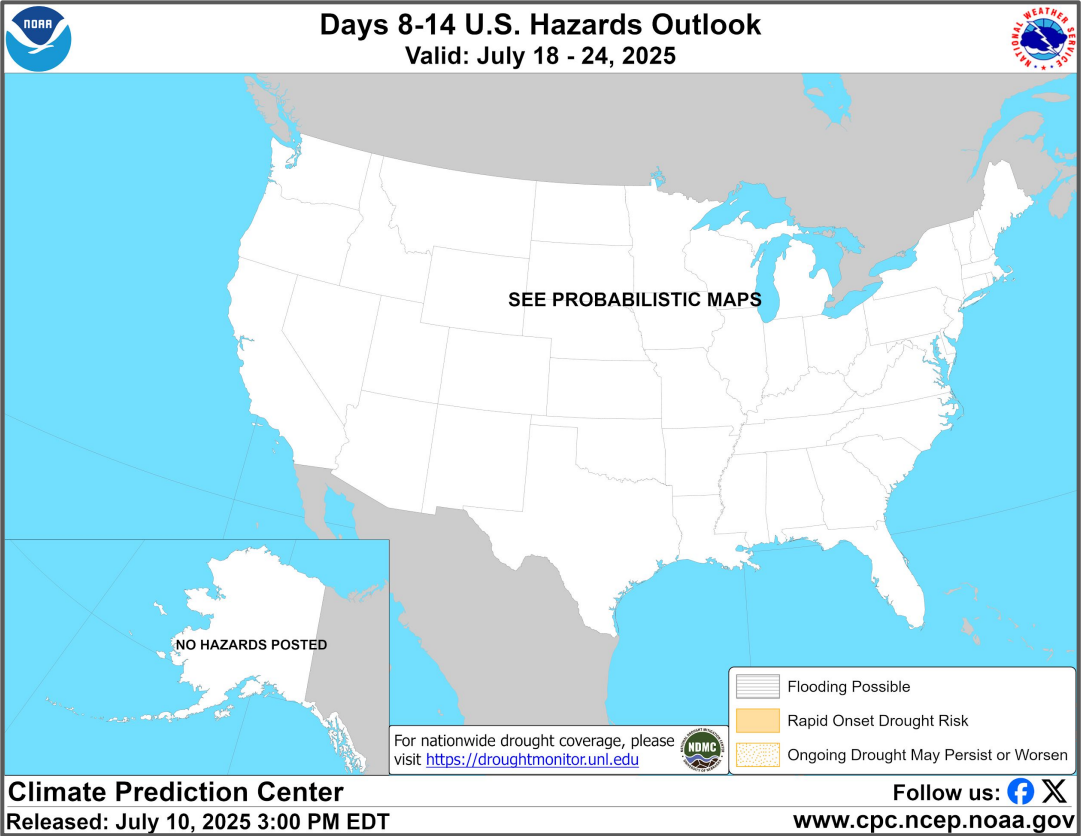
1. The “day 3-7” will really be days 2-6
2. This slide will be hidden on Mondays and Sundays so the data/information is not too old

For additional information on this outlook go to <https://www.wpc.ncep.noaa.gov/threats/threats.php>





“Day 8-14” Hazards Outlook



NOTE: These outlooks are issued in the afternoon and only issued on weekdays. Because of that and the fact that these slides are issued in the mornings:

1. The “day 8-14” will really be days 7-13
2. This slide will be hidden on Mondays and Sundays so the data/information is not too old

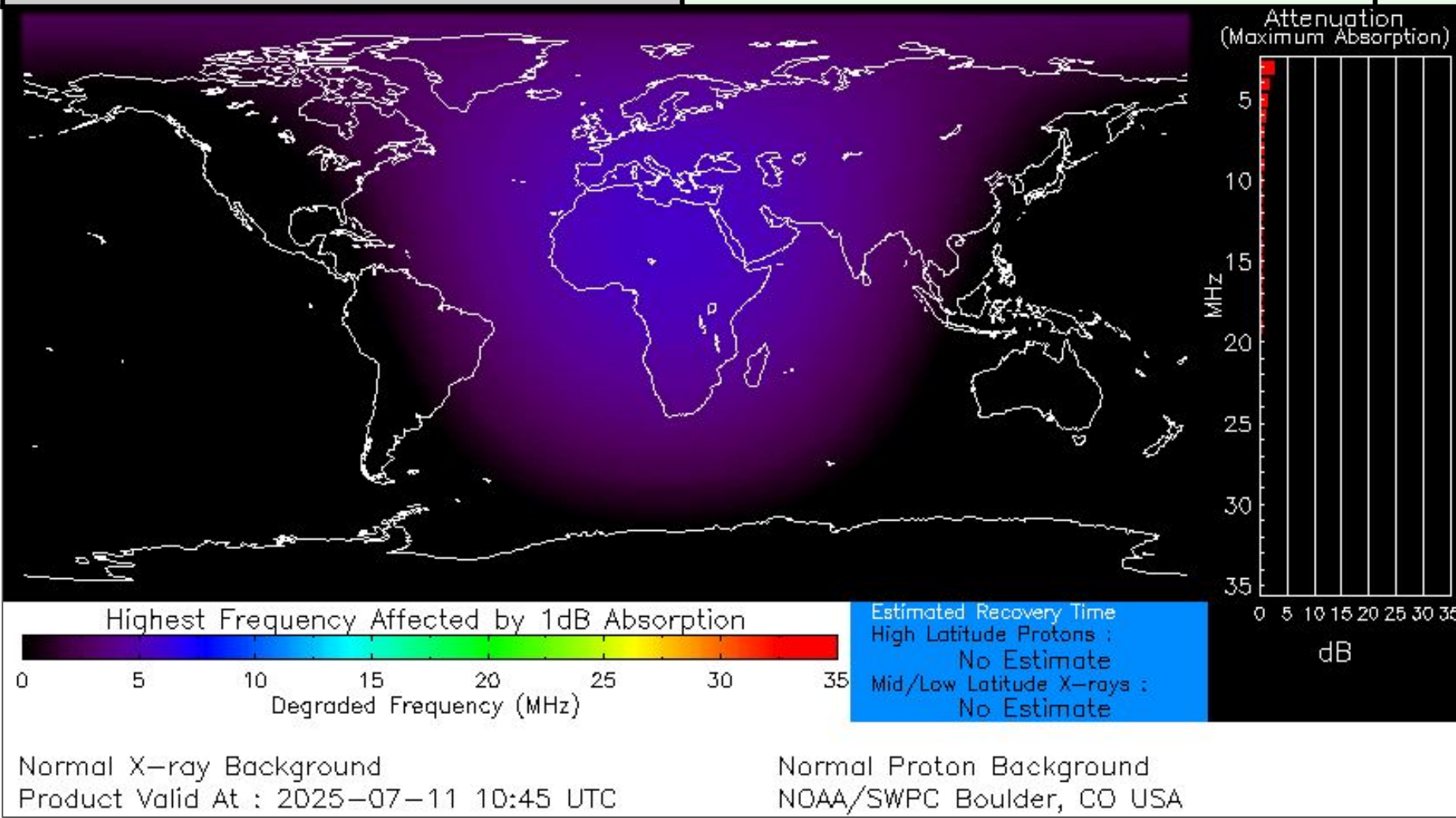
For additional information on this outlook go to <https://www.cpc.ncep.noaa.gov/products/predictions/threats/threats.php>





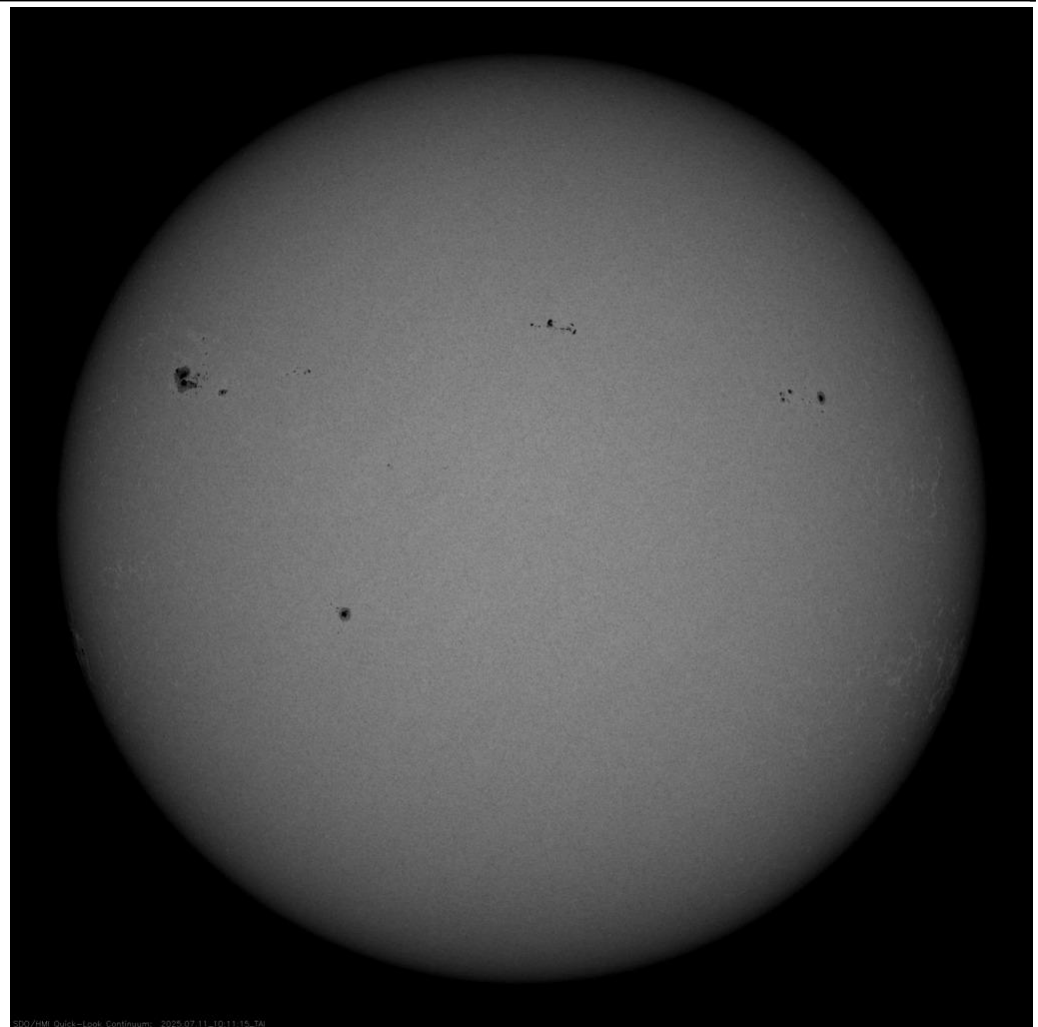
Space Weather 3-Day Forecast

	Friday, Jul 11	Saturday, Jul 12	Sunday, Jul 13
Geomagnetic Storms	Quiet (Max Kp = 2)	Quiet (Max Kp = 2)	Quiet (Max Kp = 2)
Solar Radiation Storm (S1-S5)	1%	1%	1%
Radio Blackout (R1-R2)	35%	35%	35%
Radio Blackout (R3-R5)	1%	1%	1%



[Description of the Space Weather Storm Scales](#)

[Latest 3-Day Space Weather Forecast](#)



Weather “Threat” Matrix for FEMA Region VI			
Color	Definition	Criteria	Example(s)
Green	Little to None Safety: Rarely a Direct Threat to Life and Property Impact Potential: Typically Results in Little Inconvenience to Daily Routines	Severe: Marginal Risk from SPC Flooding: Minor flooding expected over localized areas Tropical: None Fire Weather: No Watches/Warnings, fuel moisture above 10% or green up active	<ul style="list-style-type: none"> Thunderstorms expected over LA this afternoon; a few may produce winds to knock down a few trees Something that happens almost every day in a particular season such as seabreeze storms in coastal TX
Yellow	Minor Safety: Rarely a Direct Threat to Life and Property Impact Potential: Typically Results in Some Inconvenience to Daily Life	Severe: Slight Risk from SPC Flooding: Nuisance flooded expected for a widespread area, or Minor flooding expected over isolated areas Tropical: A weak tropical wave expected to move towards or near any coastline Fire Weather: Red Flag Watches/Warnings and/or SPC outlines enhanced or critical fire outlook	<ul style="list-style-type: none"> 2-3 inches of rainfall expected over central AR today and tonight; some minor (brief) street flooding possible Scattered severe storms possible, one or two tornadoes expected, along with reports of strong winds/wind damage and ~1” hail
Orange	Moderate Safety: Often Threatening to Life and Property, Some Damage Unavoidable Impact Potential: Typically Results in Minor Disruption to Daily Life	Severe: Enhanced Risk from SPC Flooding: Minor flooding expected over a widespread area (including urban locations), or Moderate flooding expected over isolated areas Tropical: A Tropical Storm expected to move towards or near any coastline Fire: Critical fire outlook for more than 2 consecutive days, Warnings for 2 or more consecutive days, D3-D4 drought conditions	<ul style="list-style-type: none"> A snow/sleet mix is expected to move through or near the DFW area tomorrow morning; travel impacts likely Numerous severe storms possible, a few tornadoes possible along with several reports of wind damage along with damaging hail Some large fires reported, burn bans advertised, critical conditions expected
Red	Major Safety: Extensive Property Damage Likely, Life Saving Actions Also will be Needed Impact Potential: Will likely result in Large Disruption to Daily Life	Severe: Moderate Risk from SPC Flooding: Moderate flooding expected over a widespread area (including urban locations) Tropical: A Hurricane expected to move towards or near any coastline Fire: Large areas of critical conditions for 2 or more days, Warnings for 3 or more days, Severe to extreme drought	<ul style="list-style-type: none"> A Category 1 hurricane will be moving towards the NW Gulf in the next few days Widespread severe storms likely, strong tornadoes, widespread wind damage, and destructive hail Large fires ongoing throughout the area with critical fire weather conditions expected to continue
Purple	Extreme Safety: Property Damage Unavoidable, Immediate Action to Save Life will be Needed Impact Potential: Typically Results in Long-Lived Widespread Major Disruption to Daily Life	Severe: High Risk from SPC Flooding: Major flooding expected over a widespread area (including urban locations) Tropical: A Major Hurricane (Cat3 or greater) expected to move towards or near any coastline Fire: Large area of critical conditions for 2 or more days, Warnings for 3 or more days, Long term (months) of severe to extreme drought	<ul style="list-style-type: none"> A Category 4 hurricane is headed towards the SE LA; major storm surge, flooding and damaging winds anticipated to begin tomorrow Widespread severe storms expected, tornado outbreak probable with long-lived, very widespread and particularly intense storms

Criteria for the color codes in this briefing is to the left, please provide any feedback to sr-srh.roc@noaa.gov



National Weather Service

Southern Region Headquarters

Regional Operations Center

Fort Worth, TX



Phone: (682) 703-3747



Facebook: NWSSouthern



E-mail: sr-srh.roc@noaa.gov



X: NWSSouthern

WWW

Web: www.weather.gov/srh

