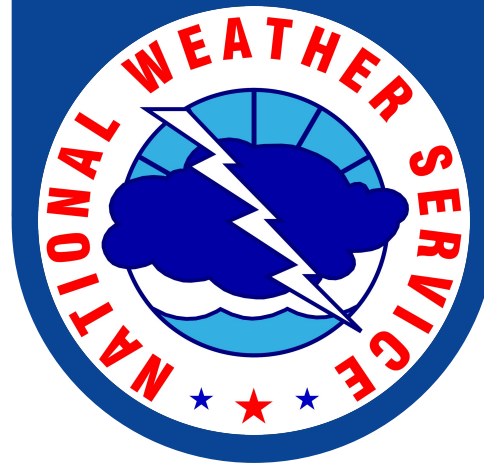




# FEMA



Prepared by  
*Brian Hoeth*

# FEMA Region 6 Weather Threat Briefing

## Monday, September 15, 2025

**Disclaimer:** The purpose of this briefing is to provide a **Regional** weather threat assessment and is meant as a general overview. County/Parish decision makers should consult their local NWS forecast offices for the latest detailed, local weather information. To find your local NWS forecast office, go to [www.weather.gov/srh](http://www.weather.gov/srh).



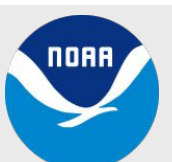
National Oceanic and  
Atmospheric Administration  
U.S. Department of Commerce

National Weather Service  
Southern Region



# Summary

- **Flooding:**
  - **Flash Flooding: Marginal risk (level 1 of 4) for SW NM Tue; NE NM, TX/OK Panhandles Wed.**
  - **NM Burn Scars: Minor to moderate risk (levels 1-2 of 4) Tue-Thu.**
- **Tropical Weather:**
  - **A tropical depression is likely (80% chance) to form mid to late week in the central Atlantic. No impacts to FEMA 6.**





# FEMA Region 6 Threat Matrix

Next 7 days

	Monday, Sep 15	Tuesday, Sep 16	Wednesday, Sep 17	Thursday, Sep 18	Friday, Sep 19	Saturday, Sep 20	Sunday, Sep 21
Severe Storms							
Heavy Rain / Flash Flooding		SW NM	NE NM, TX/OK Panhandles				
Burn Scars		NM	S NM	S NM			
			N NM				
Tropical							
Heat							
River Flooding							

*\*Threat levels are based on FEMA Region 6 criteria. State or local threat level criteria may differ.\**  
*For more details on the colors in the threat matrix refer to the last slide in this briefing.*

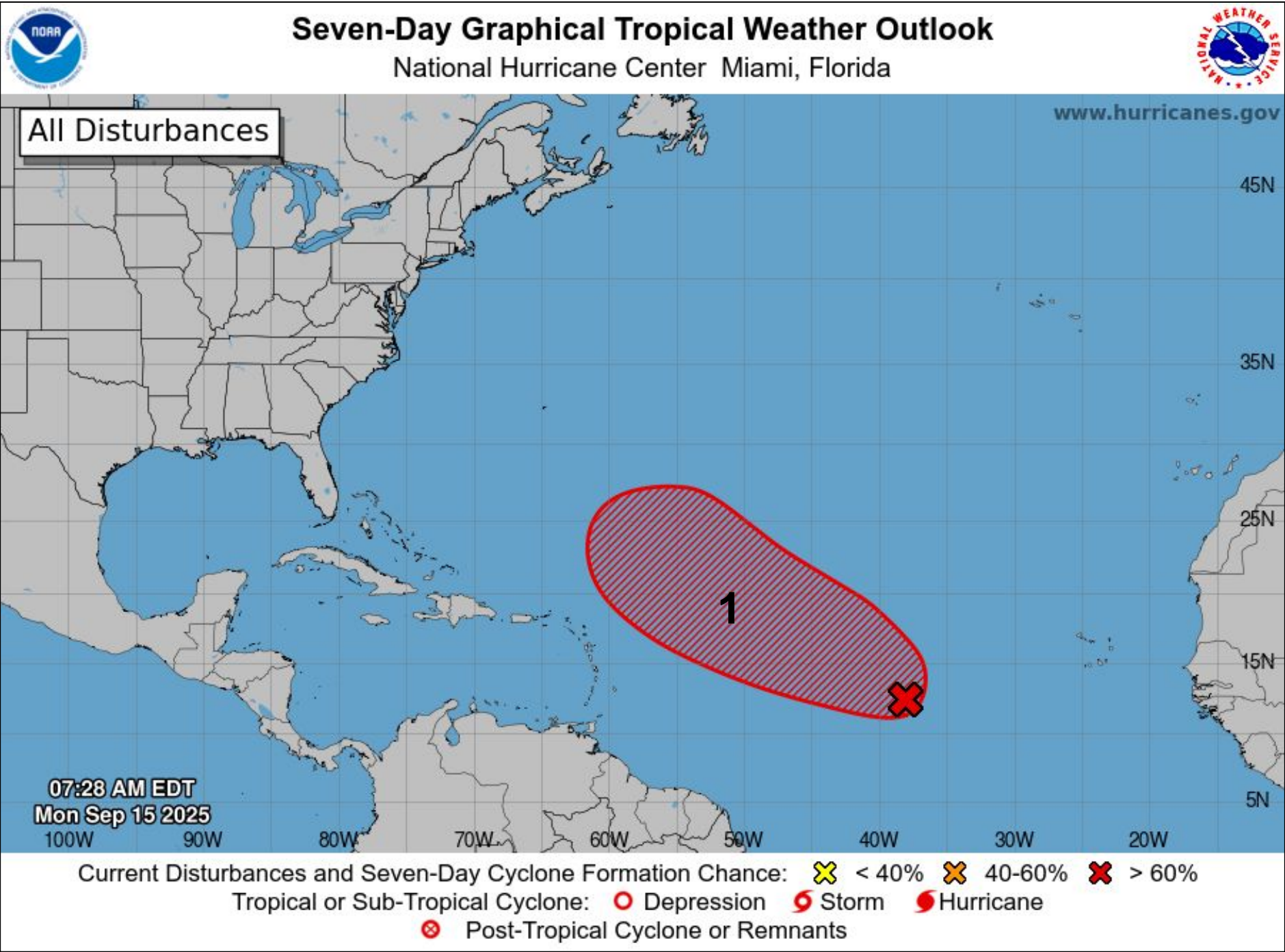
Risk Levels	Little to None	Minor	Moderate	Major	Extreme
-------------	----------------	-------	----------	-------	---------



# Tropical Weather Outlook – Atlantic/Gulf

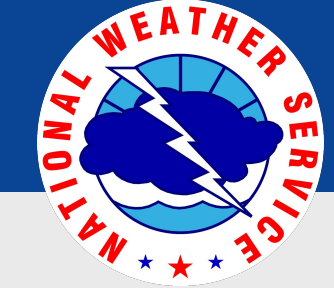
Areas of Possible Development		
Area	Chance of Development	Potential Impacts to FEMA 6
1	High	None

Active Tropical Cyclones	
Storm	Potential Impacts to FEMA 6



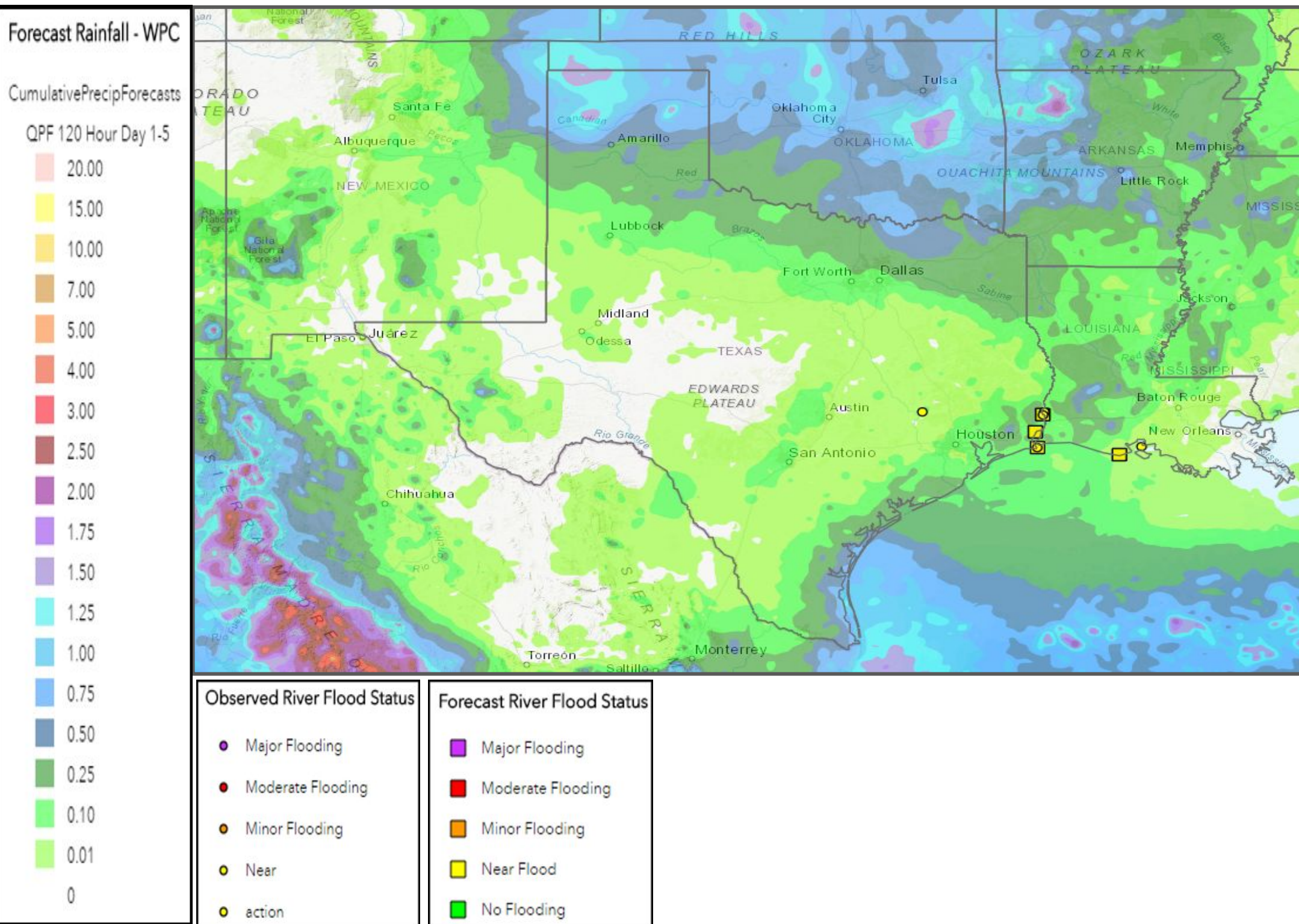
See <http://www.hurricanes.gov> for the latest on the tropics or any active storms





# 5-Day Precipitation Forecast & River Flood Status

*Note: Even though the image displays 5 days of forecasted rainfall, river forecasts only include 1-2 days of rainfall*



**Significant river flooding is not expected.**

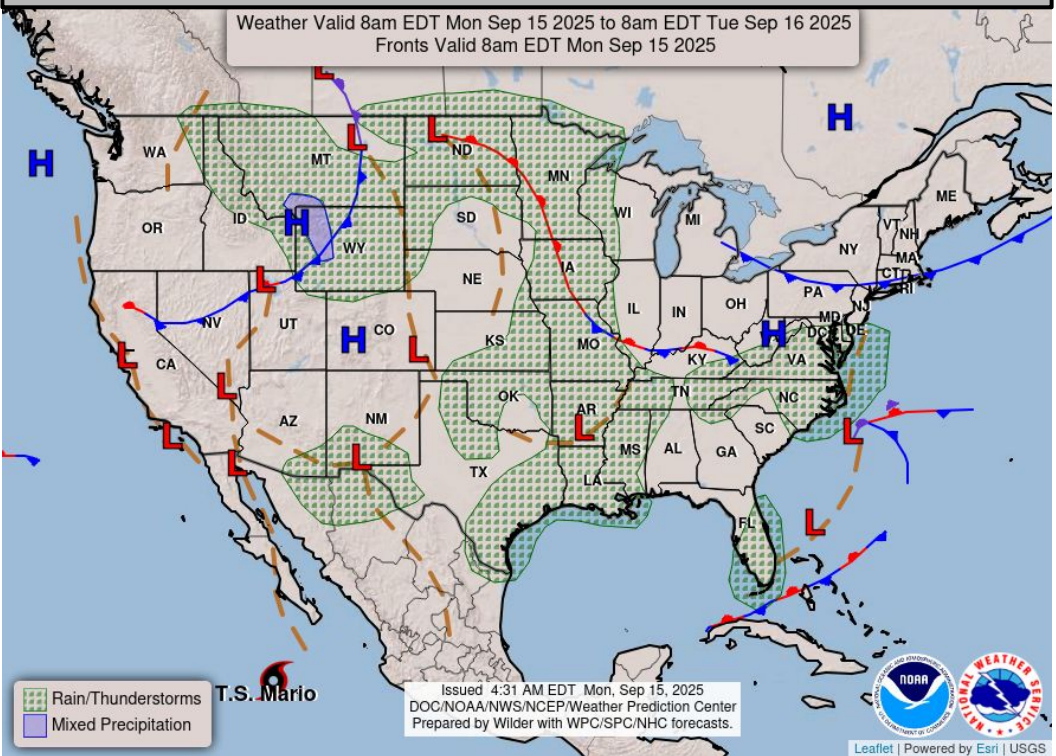
*Note: Numerical levels (e.g. level 1 of 4) will not be assigned to riverine flooding due to the varying levels of impacts across flood categories.*



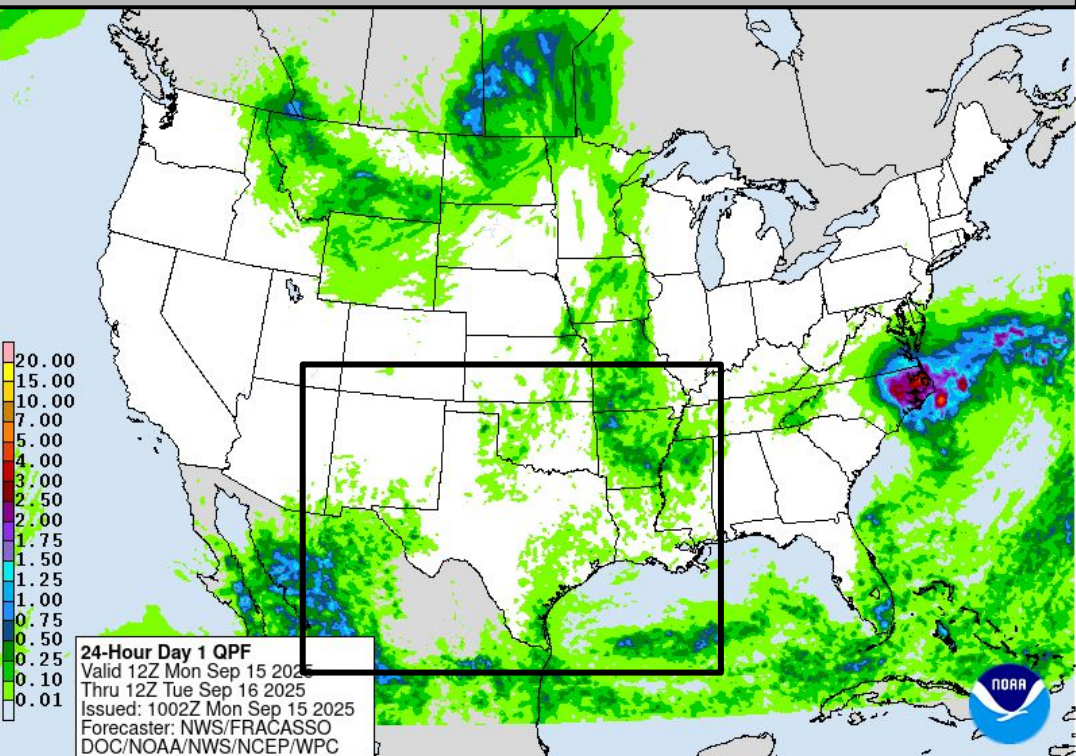


# Today's Weather

## Forecast Chart

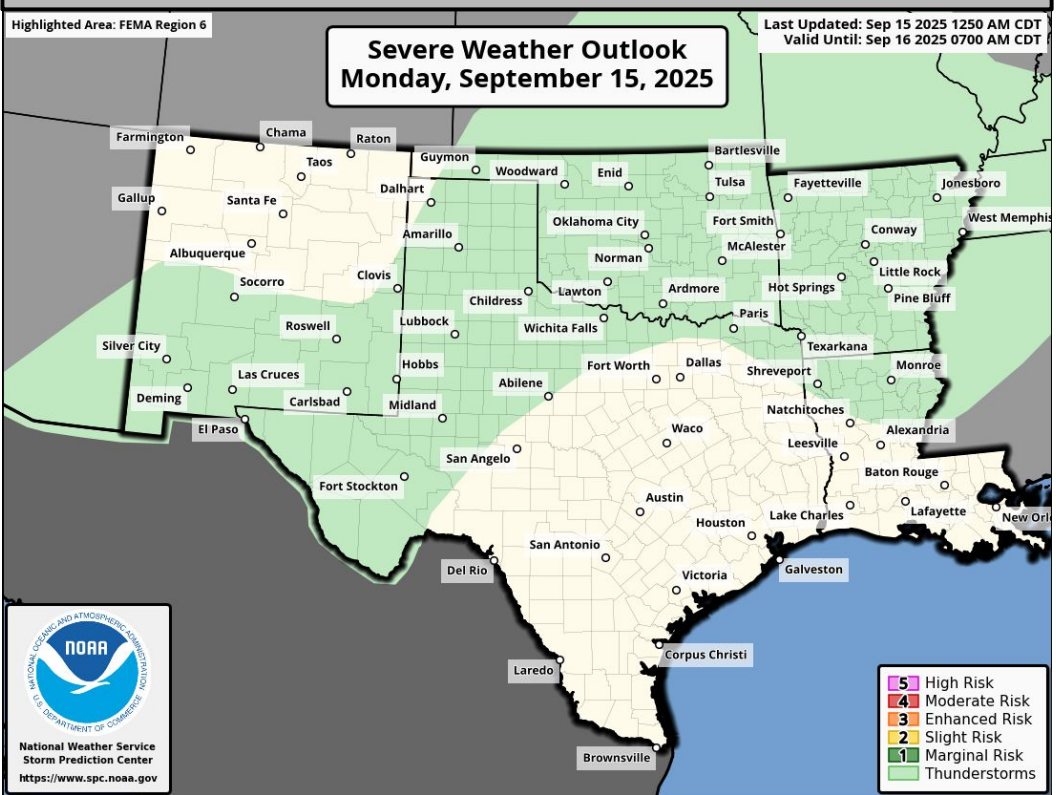


## Forecast Rainfall

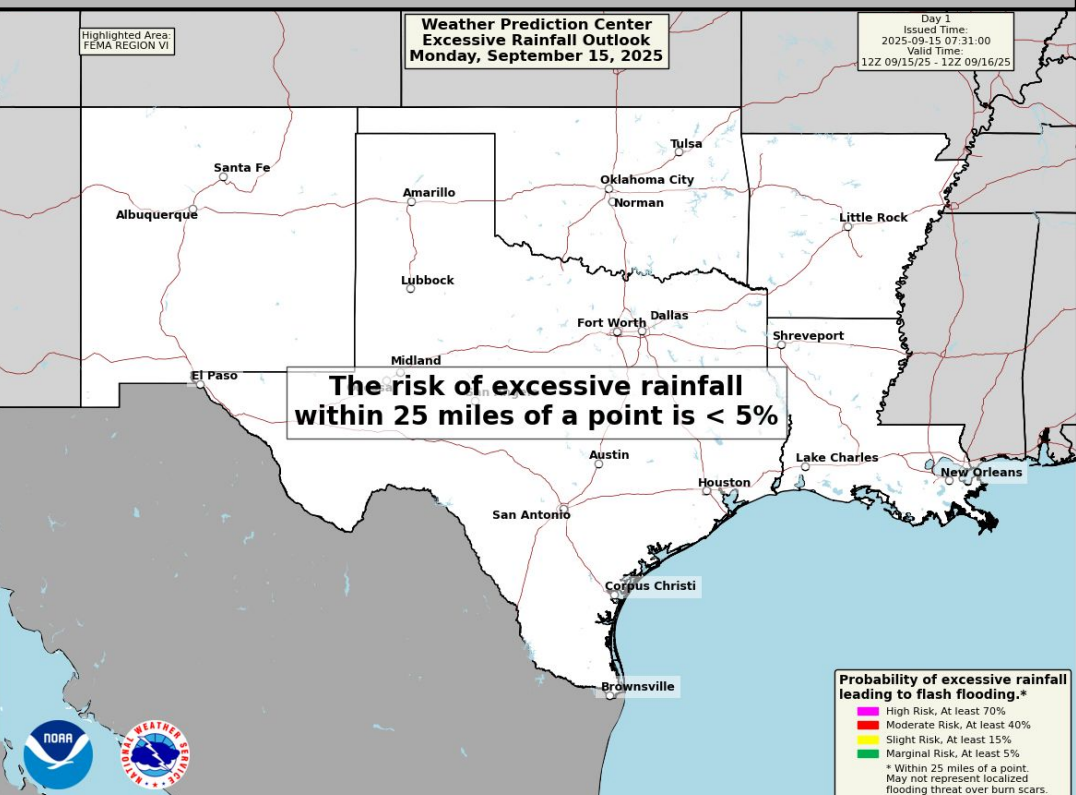


No significant weather expected.

## Severe Weather Outlook



## Excessive Rainfall Outlook

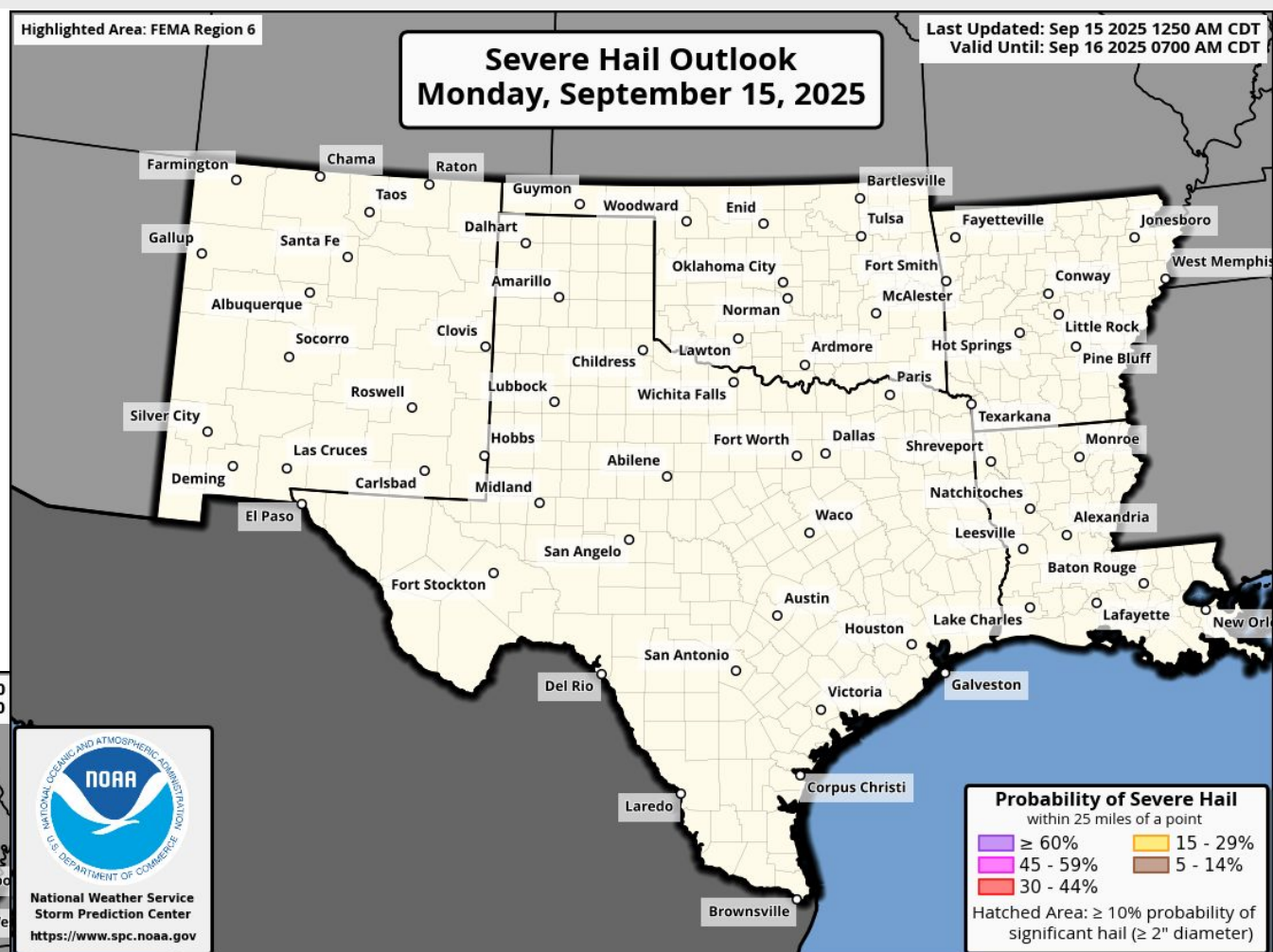
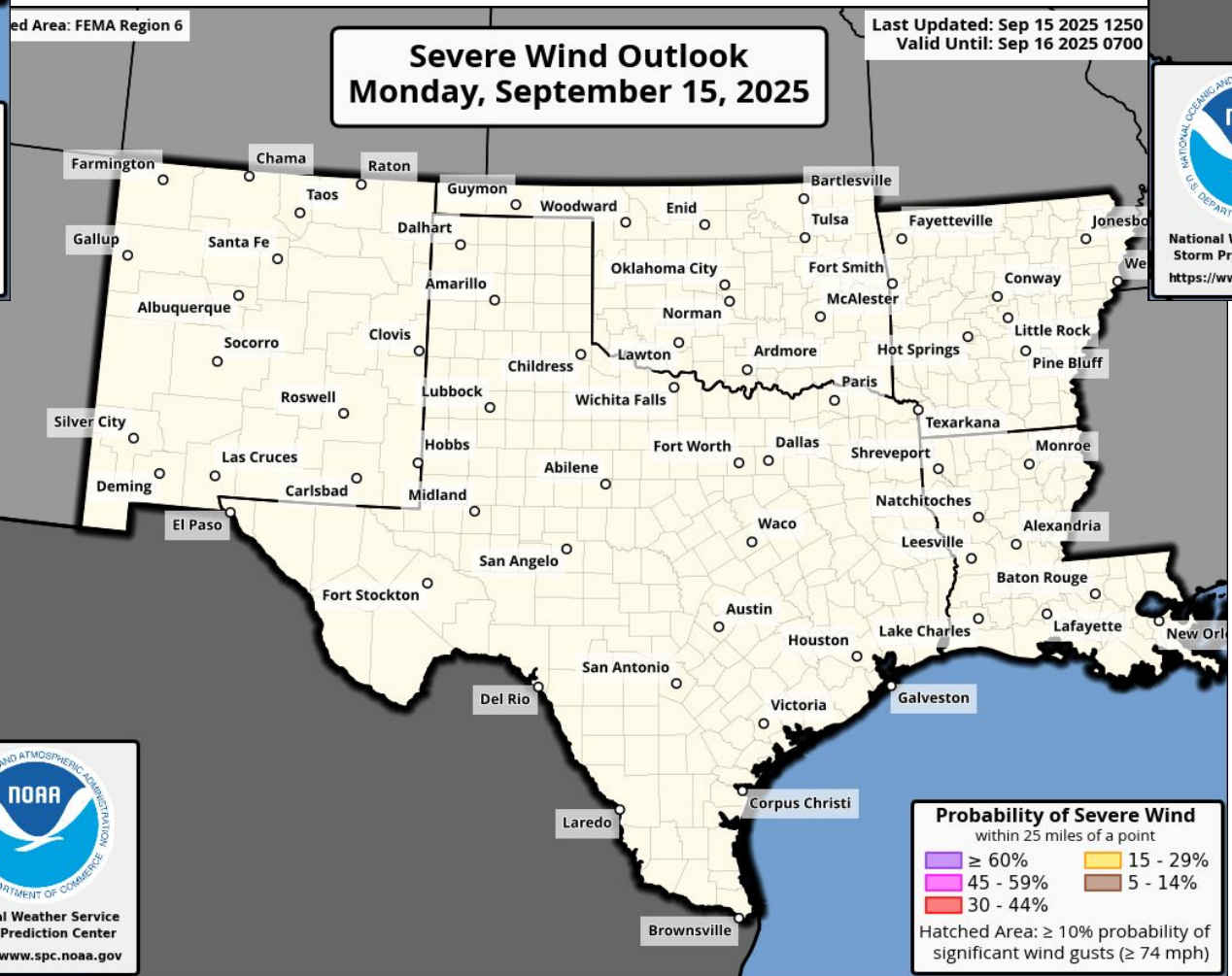
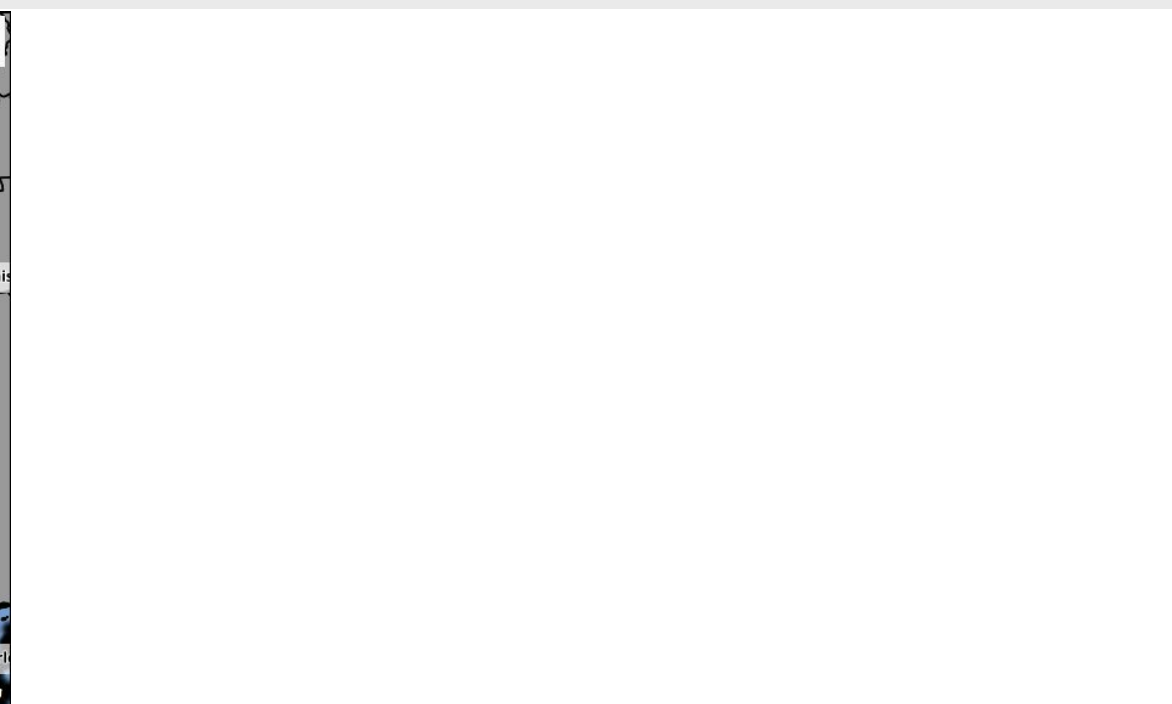
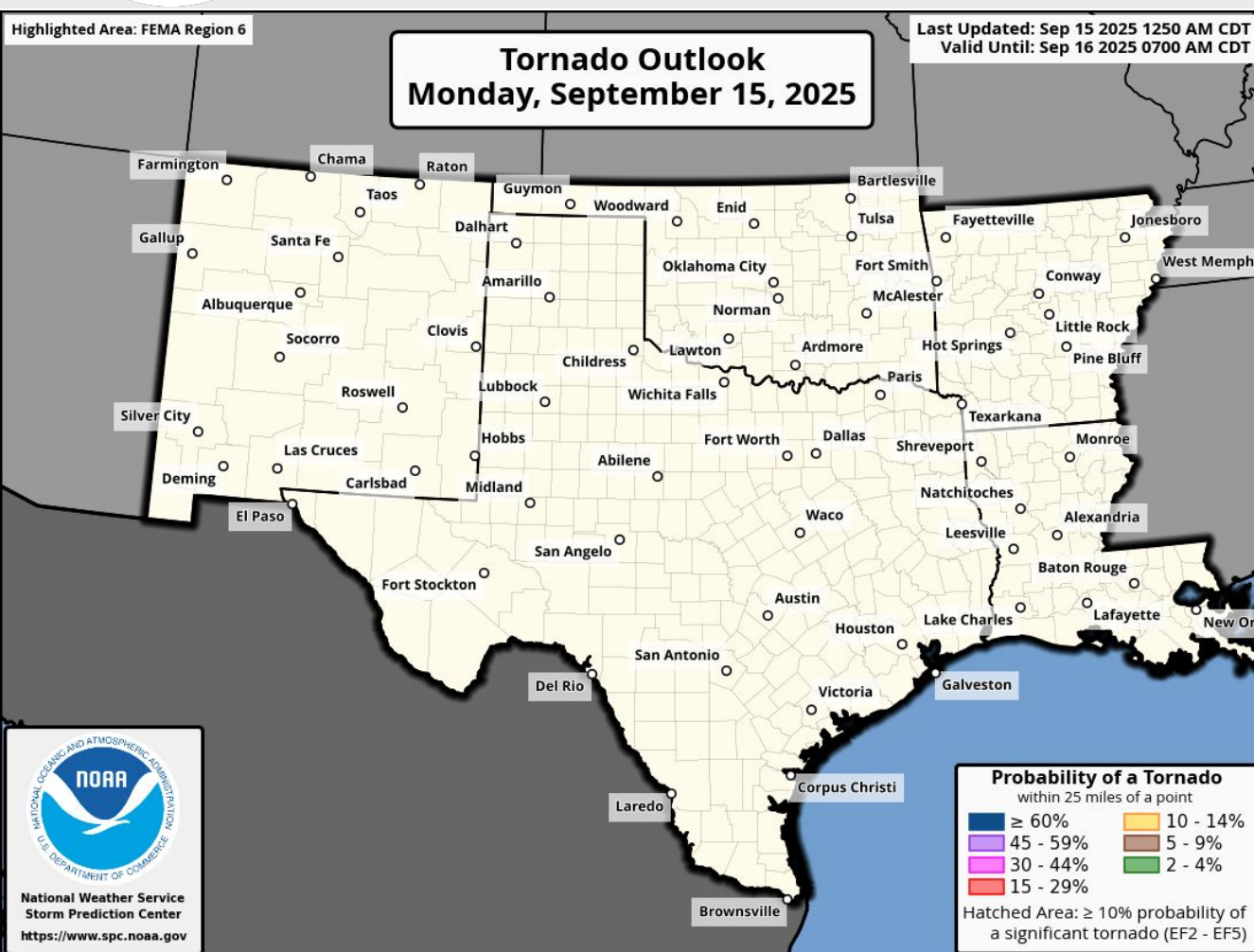


*\*Burn Scar Flash Flooding information on Burn Scar Matrix slides\**





# Today's Tornado & Severe Wind / Hail Probabilities

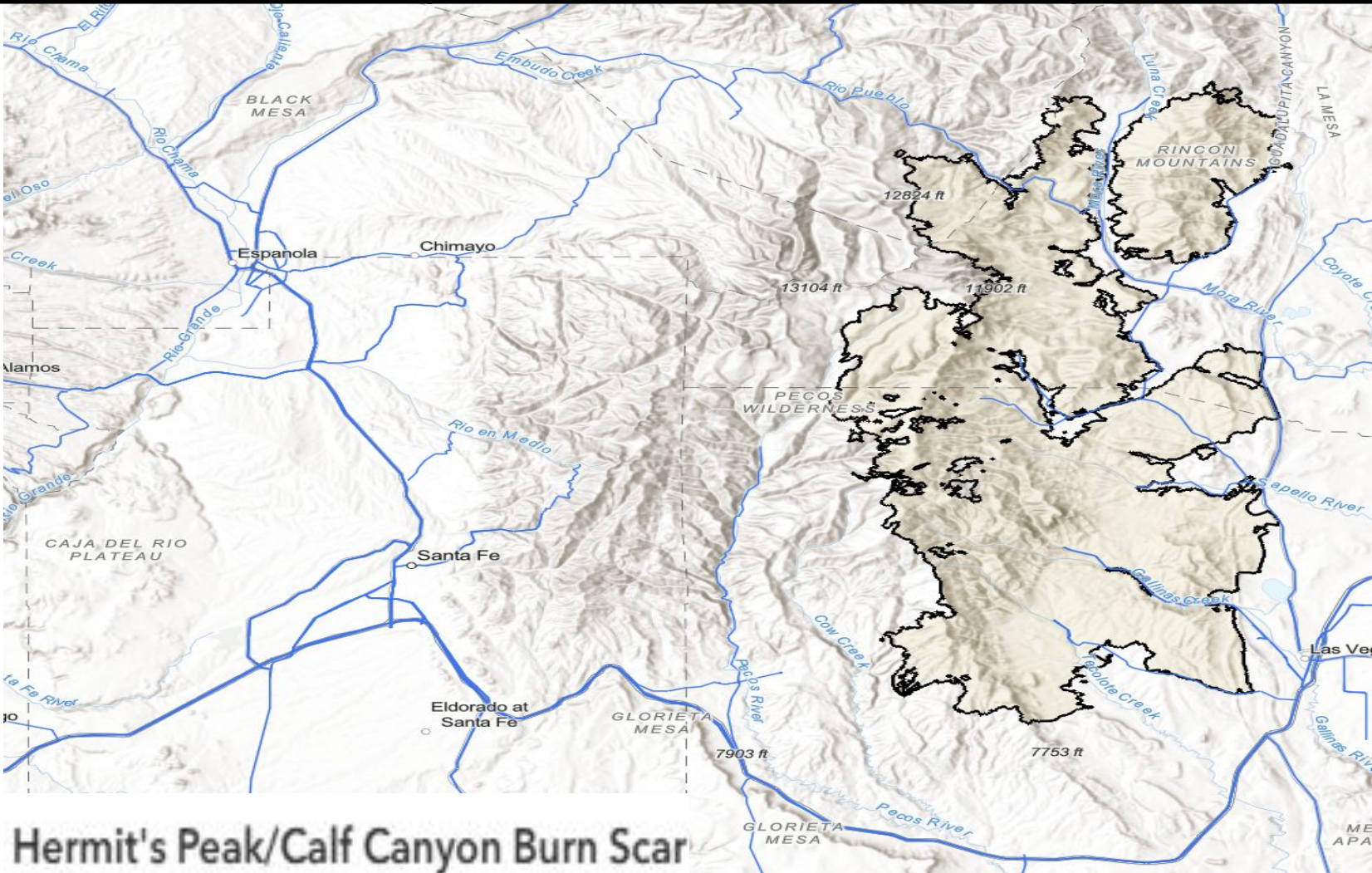




# Burn Scar Debris Flow Risk - HPCC Scar New Mexico

## Hermit's Peak/Calf Canyon Burn Scar

	Monday, Sep 15	Tuesday, Sep 16	Wednesday, Sep 17	Thursday, Sep 18
Flash Flooding		Minor	Minor	
Timing - CDT		Afternoon/Evening	Afternoon/Evening	



Hermit's Peak/Calf Canyon Burn Scar

Little to None	No Flash Flood Threat
Minor (level 1 of 4)	Slight Risk of Flash Flooding
Moderate (level 2 of 4)	Probability of Flash Flooding Issuance 40% to 60%
Major (level 3 of 4)	Flood Watch Issued OR Debris Flow Probability > 50%
Extreme (level 4 of 4)	Life Threatening Flash Flooding Likely - Historic Type Day
<ul style="list-style-type: none"><li>WPC's Excessive Rainfall Outlook is <i>Not Applicable</i> to burn scars.</li></ul>	

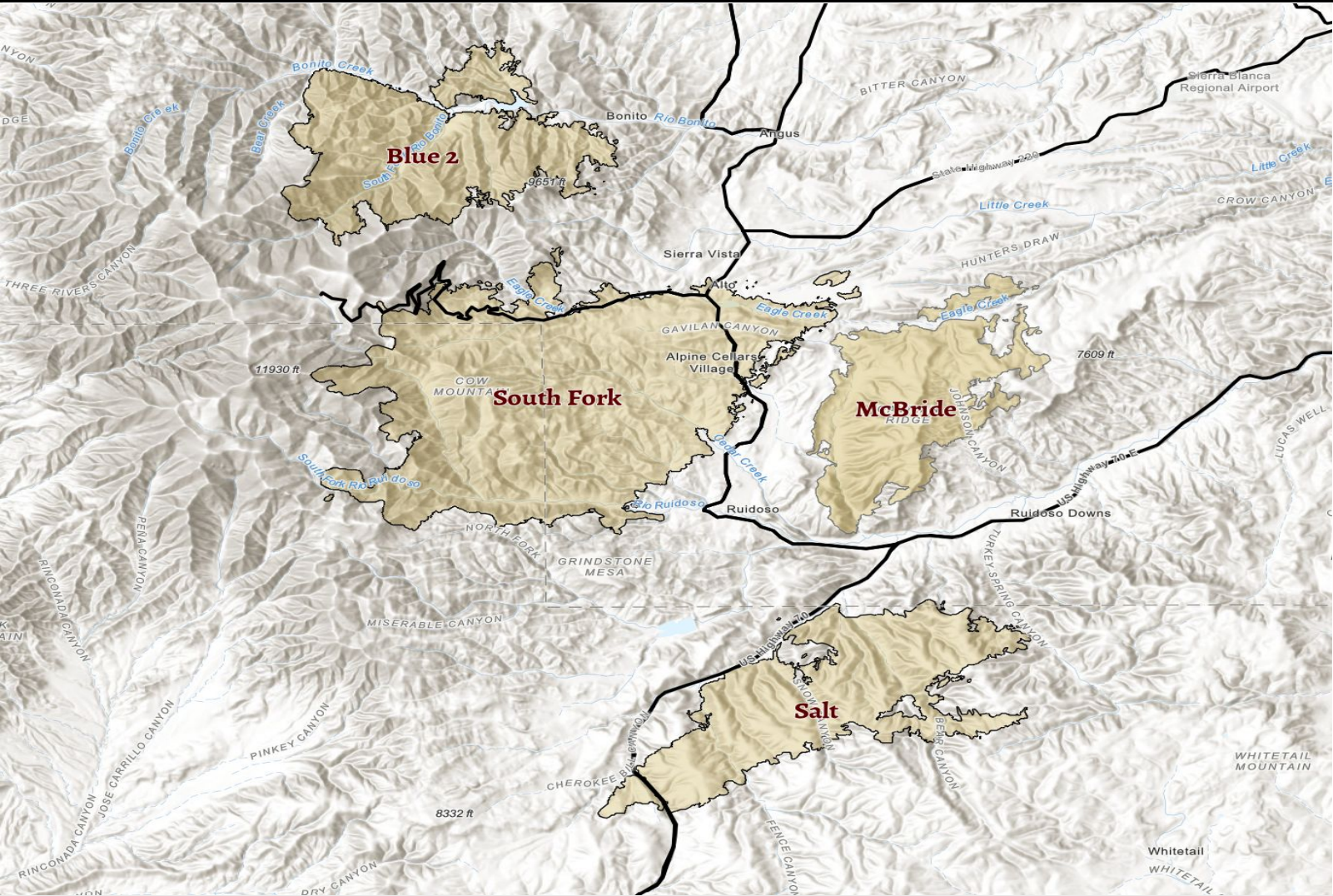




# Burn Scar Debris Flow Risk - Ruidoso, New Mexico

## Sacramento Complex

	Monday, Sep 15	Tuesday, Sep 16	Wednesday, Sep 17	Thursday, Sep 18
Flash Flooding		Minor	Moderate	Minor
Timing - CDT		Afternoon/Evening	Afternoon/Evening	Afternoon/Evening

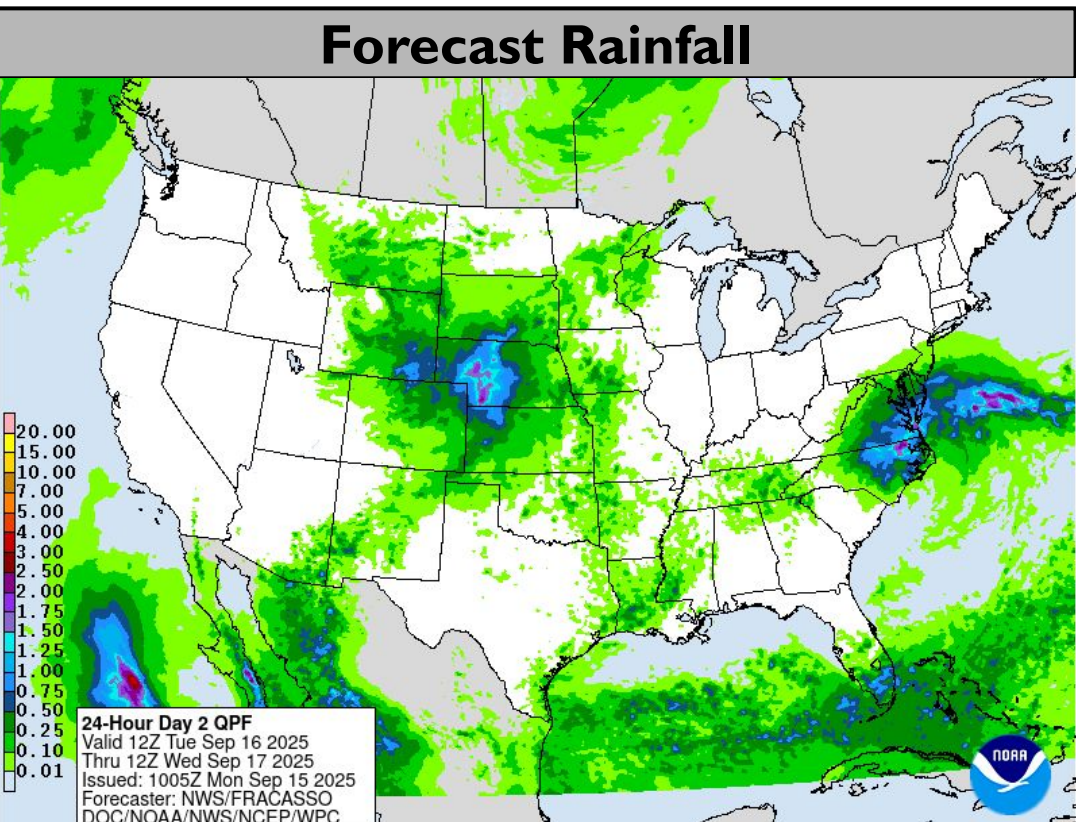
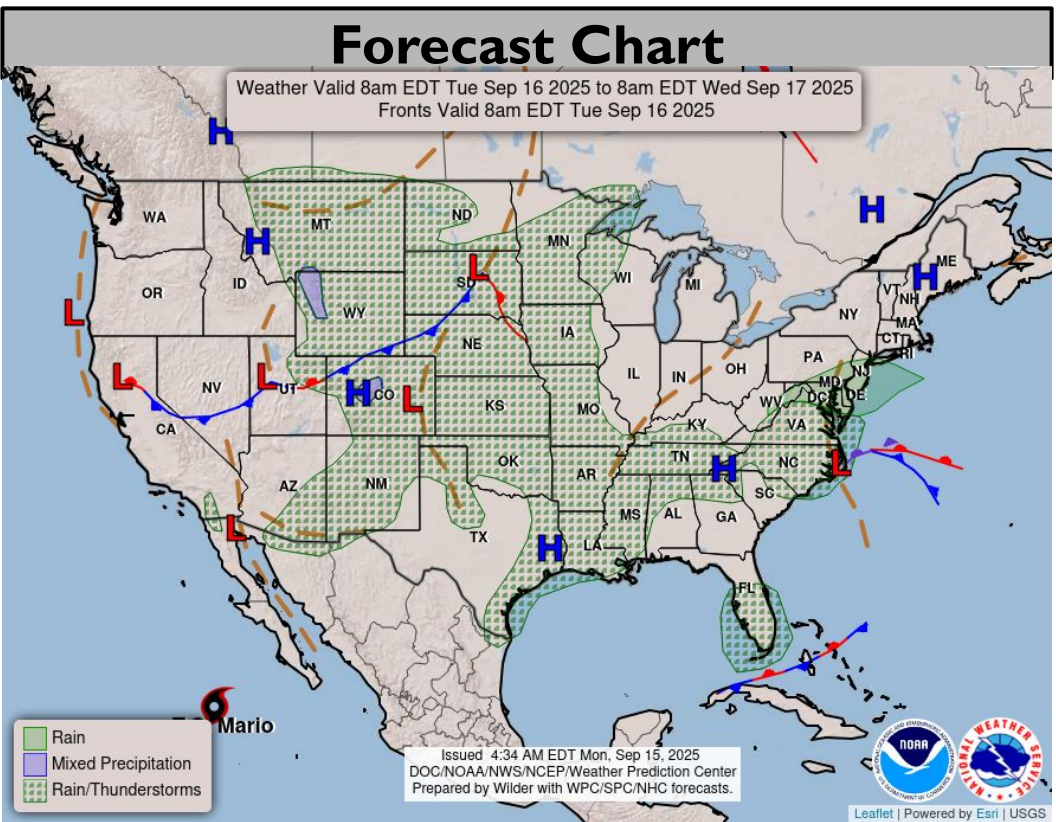


Little to None	No Flash Flood Threat
Minor (level 1 of 4)	Slight Risk of Flash Flooding
Moderate (level 2 of 4)	Probability of Flash Flooding Issuance 40% to 60%
Major (level 3 of 4)	Flood Watch Issued OR Debris Flow Probability > 50%
Extreme (level 4 of 4)	Life Threatening Flash Flooding Likely - Historic Type Day
<ul style="list-style-type: none"><li>WPC's Excessive Rainfall Outlook is <i>Not Applicable</i> to burn scars.</li><li><b>*Note*</b> 2nd year burn scars can be <u>more dangerous</u> than year 1.</li></ul>	

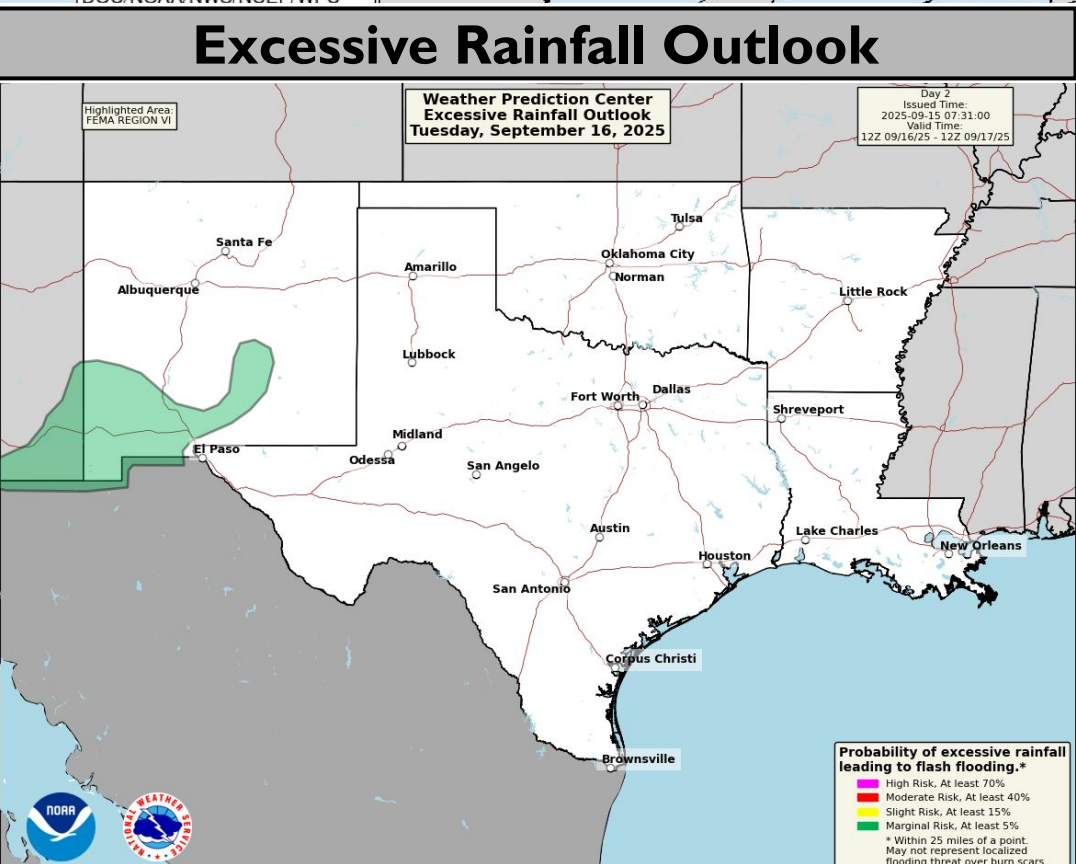
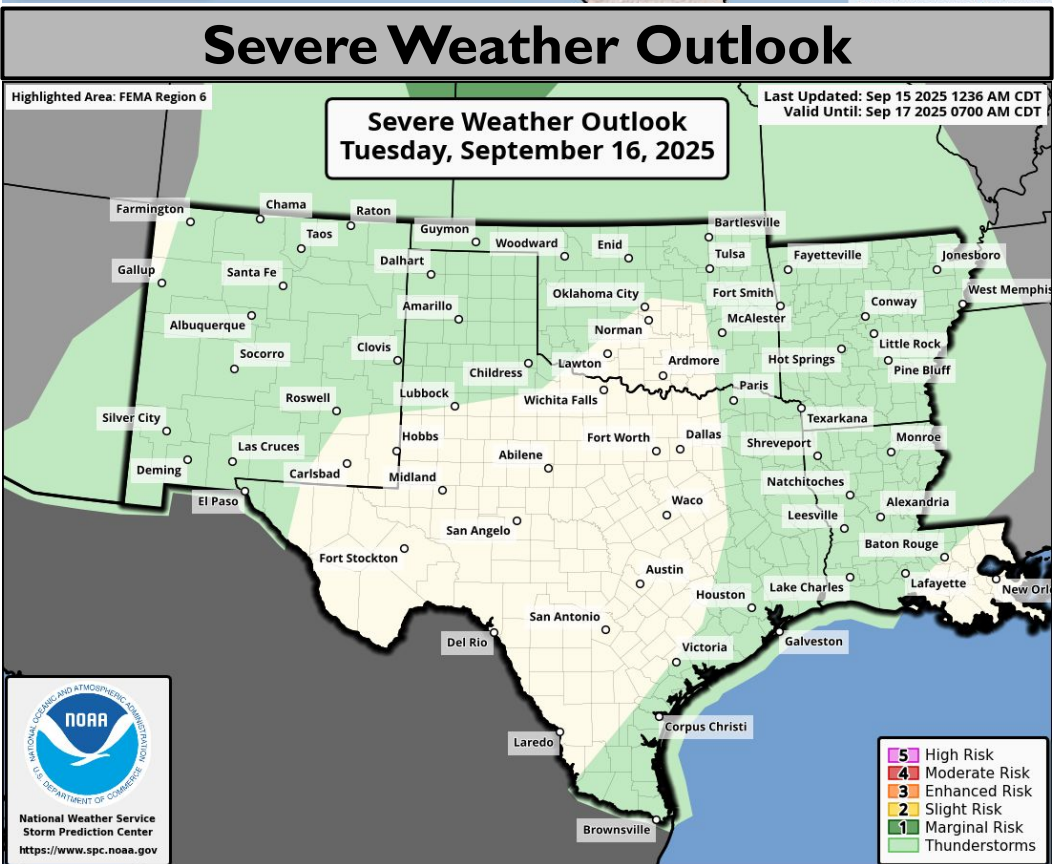




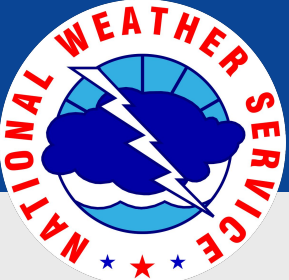
# Tomorrow's Weather



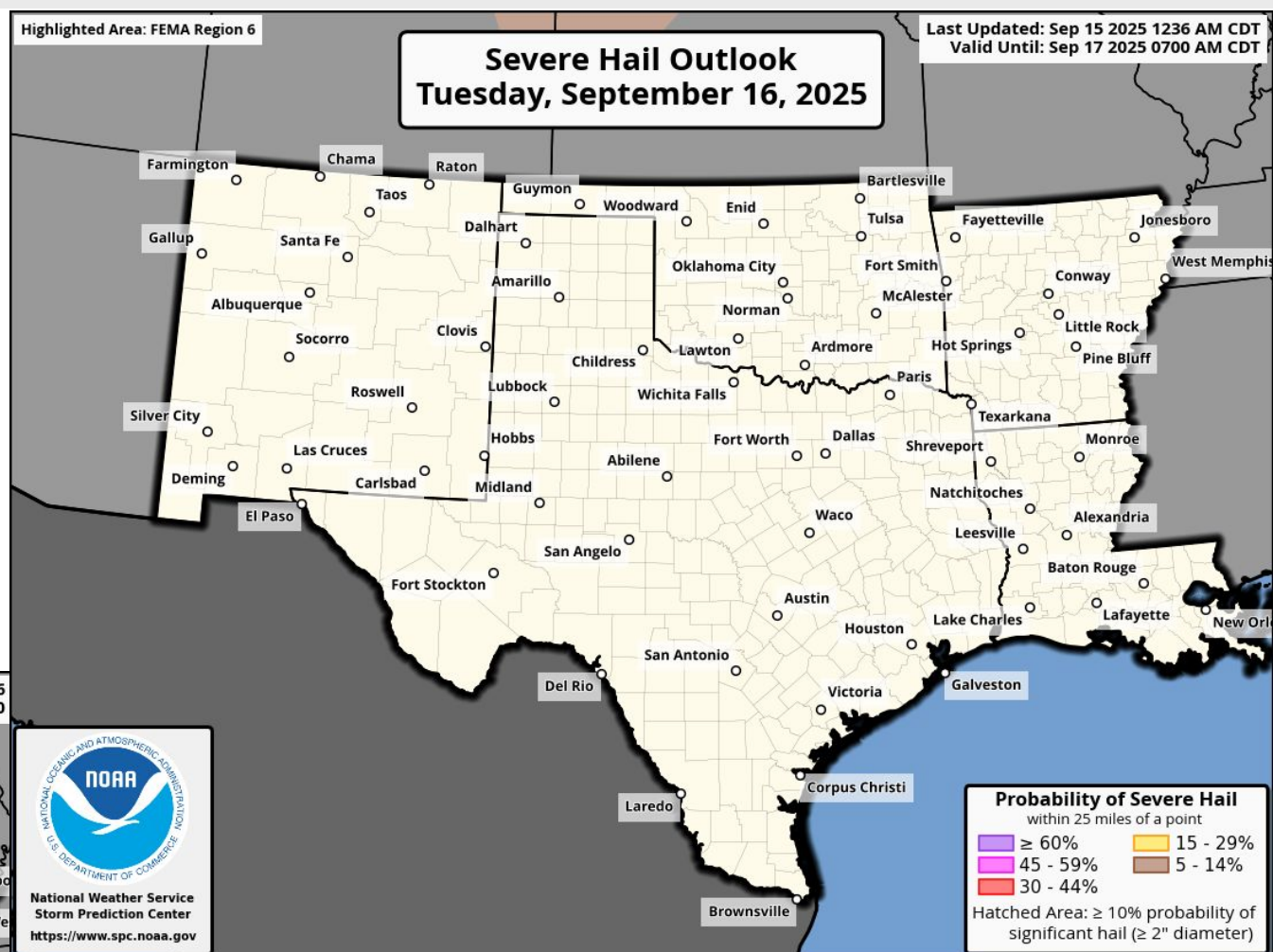
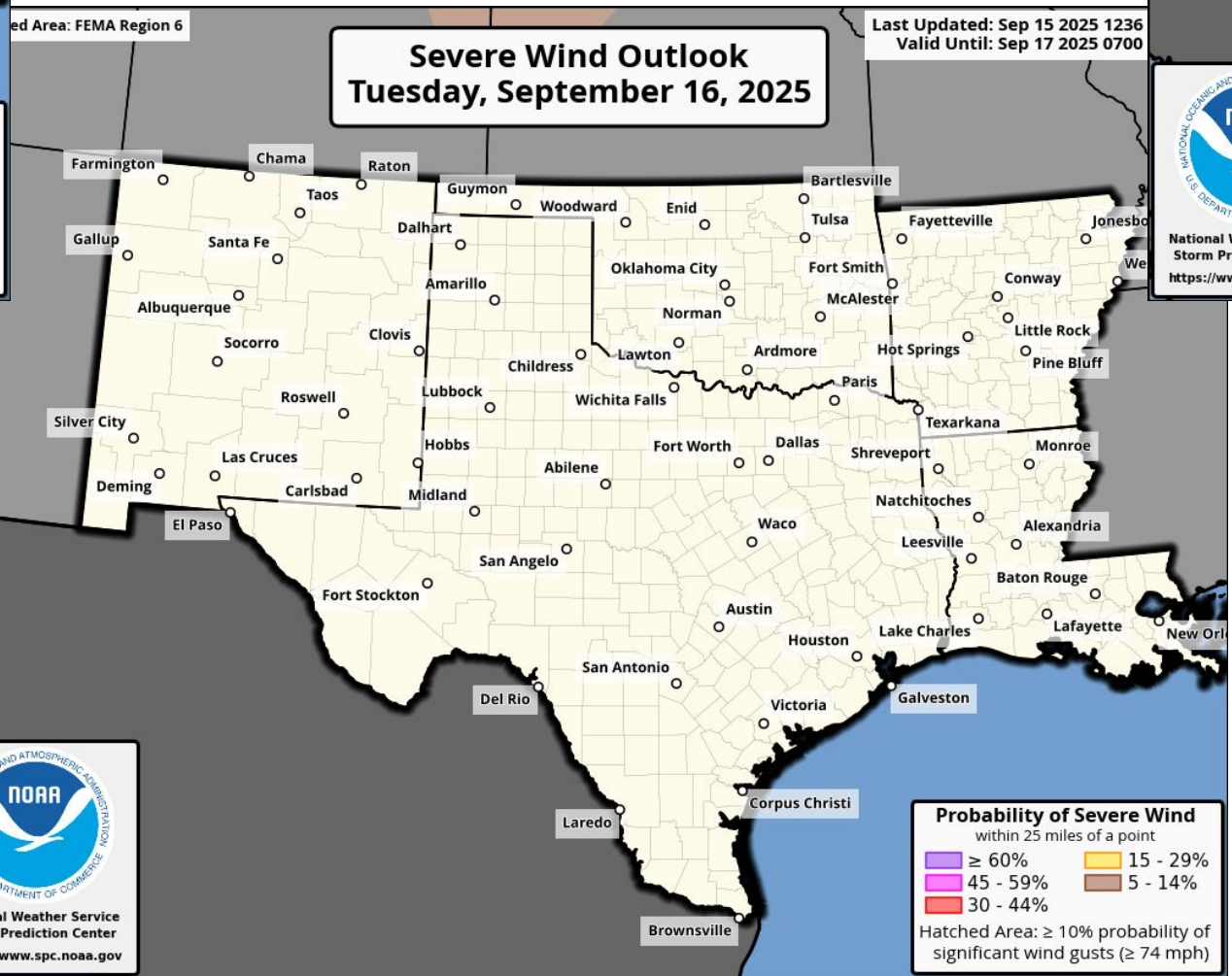
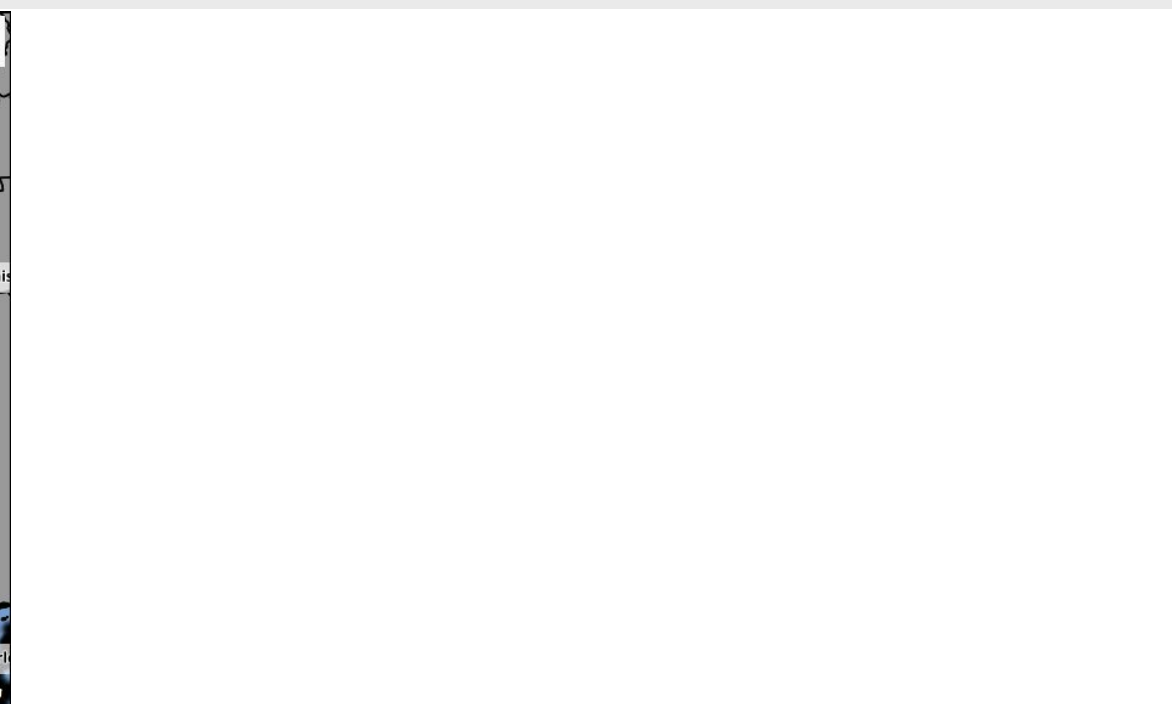
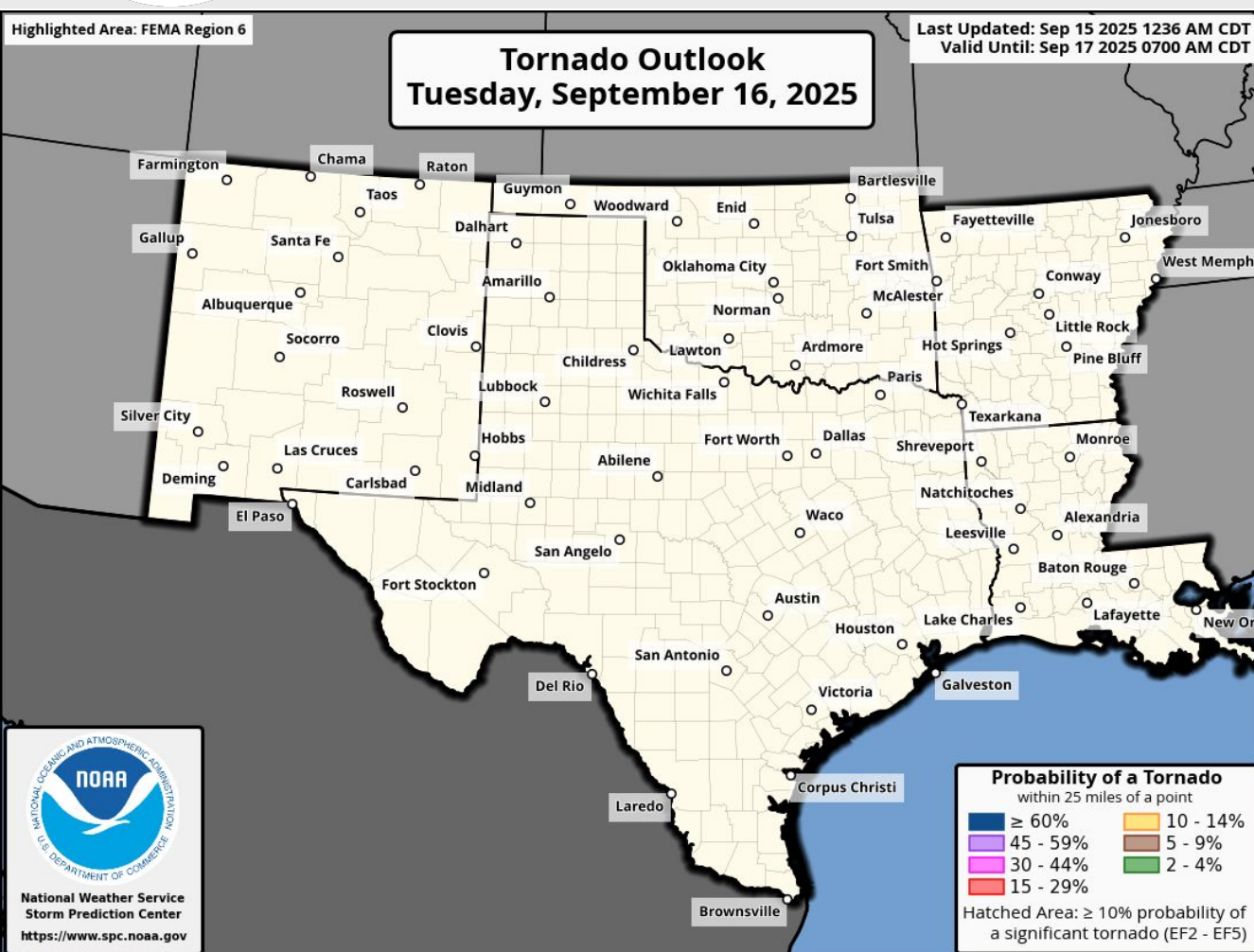
**Marginal risk (level 1 of 4) for flash flooding in SW NM.**

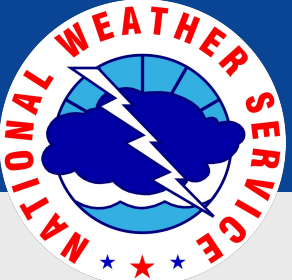


***\*Burn Scar Flash Flooding information on Burn Scar Matrix slides\****



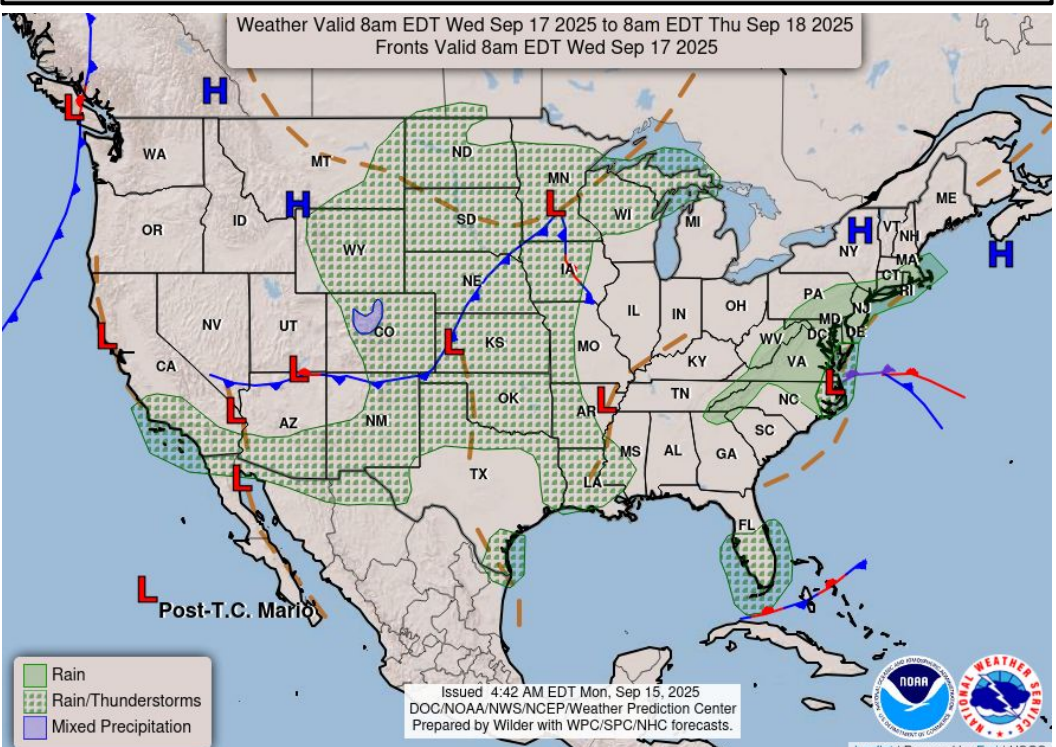
# Tomorrow's Tornado & Severe Wind / Hail Probabilities



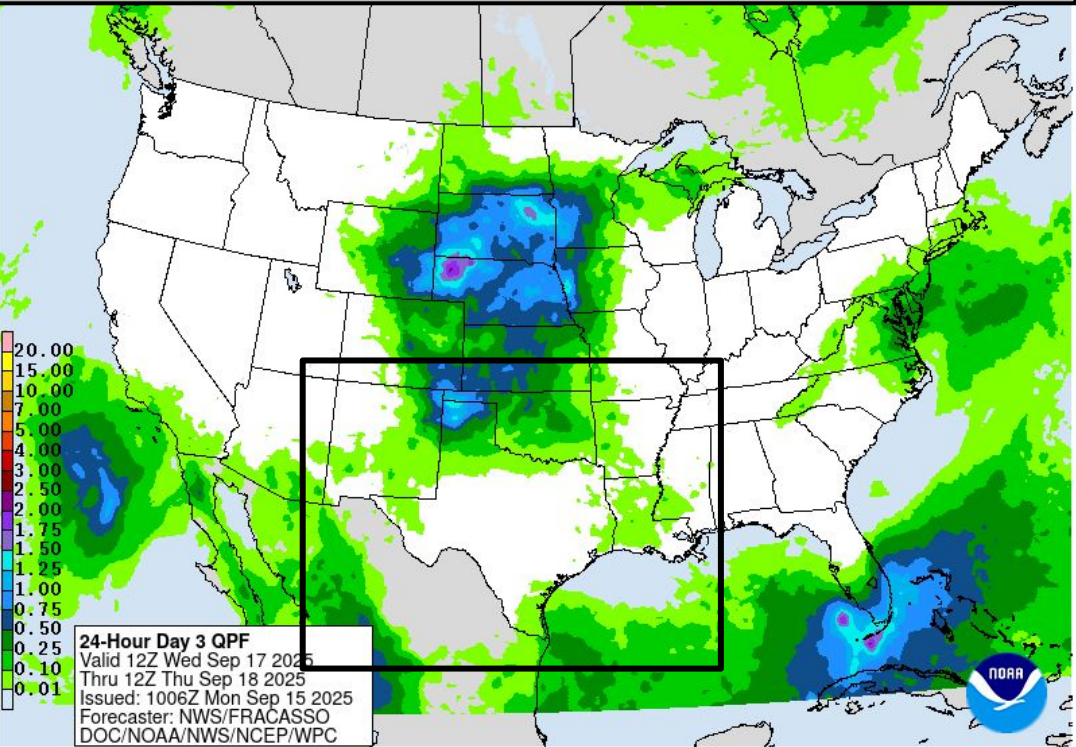


# Wednesday's Weather

## Forecast Chart

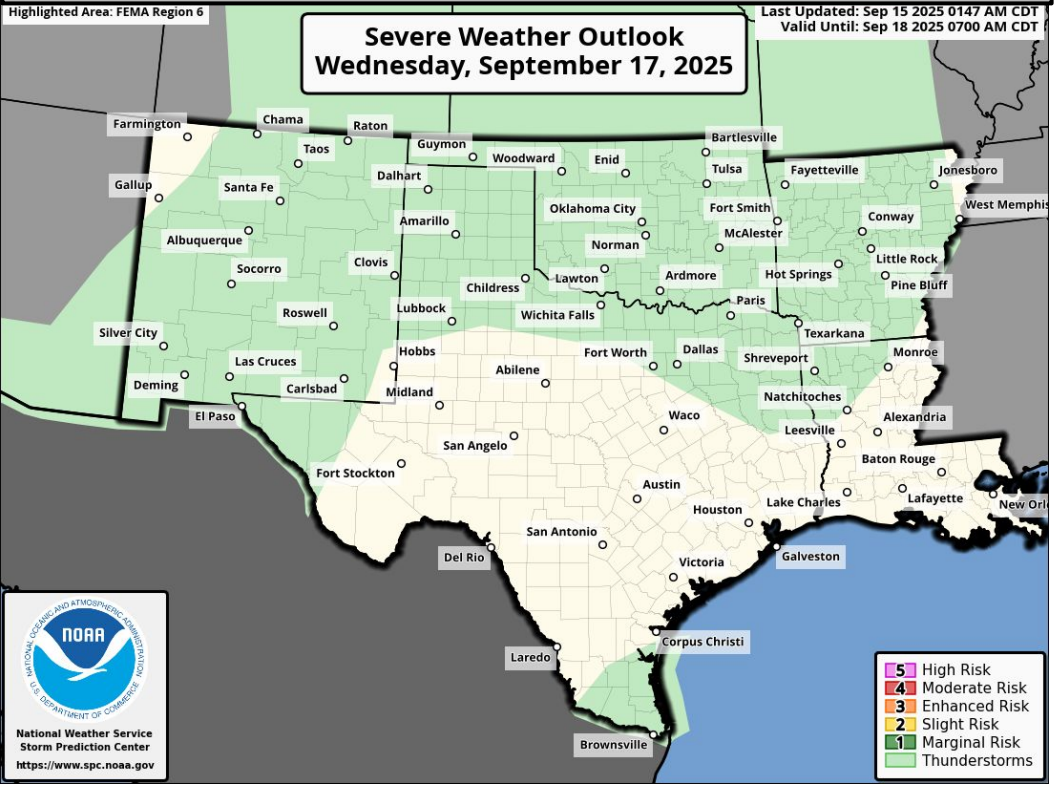


## Forecast Rainfall

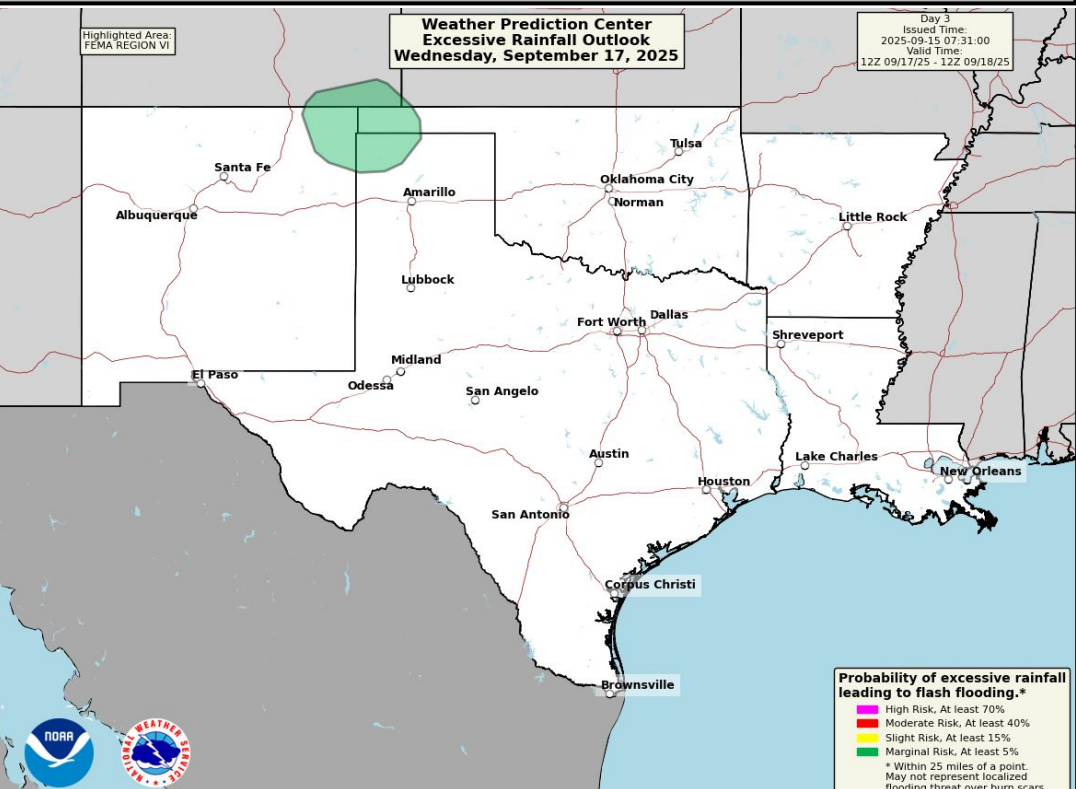


**Marginal risk (level 1 of 4) for flash flooding in NE NM, TX/OK Panhandles.**

## Severe Weather Outlook



## Excessive Rainfall Outlook

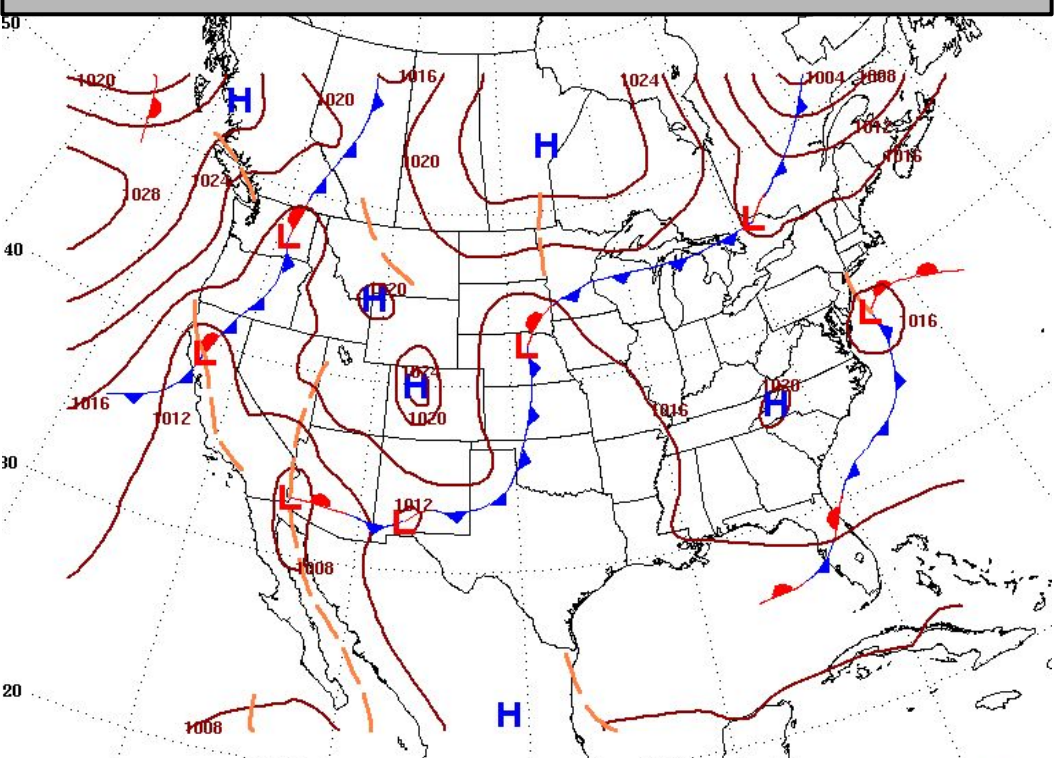


**\*Burn Scar Flash Flooding information on Burn Scar Matrix slides\***

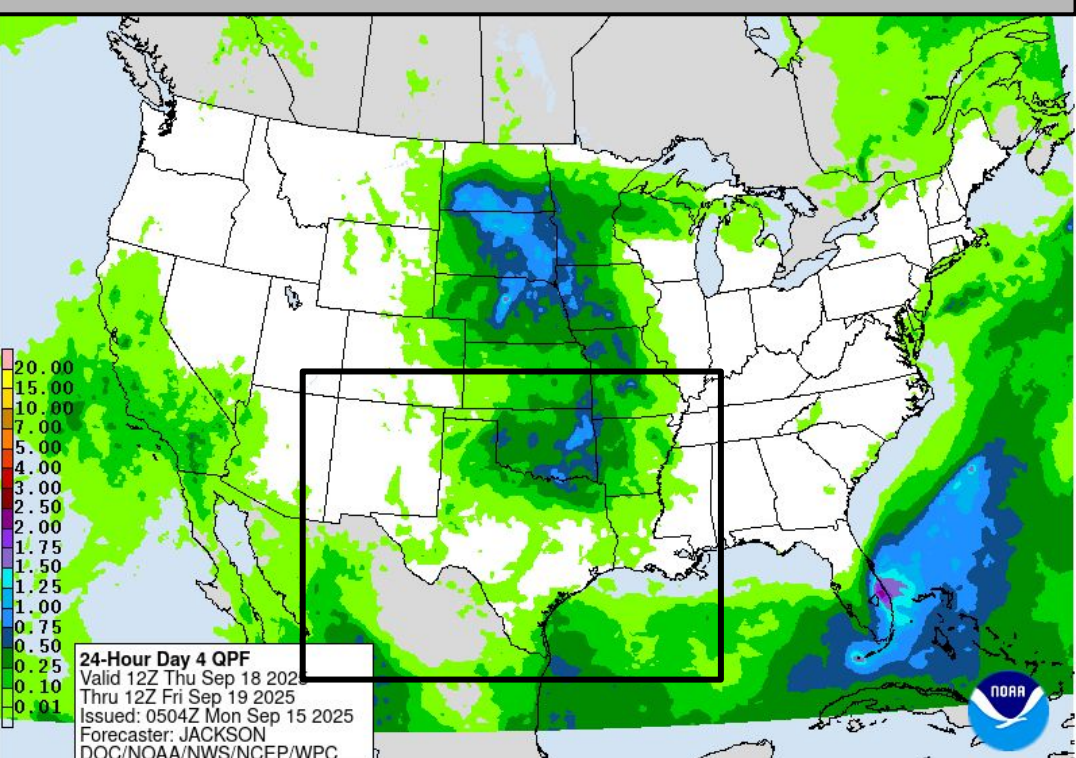


# Thursday's Weather

Forecast Chart

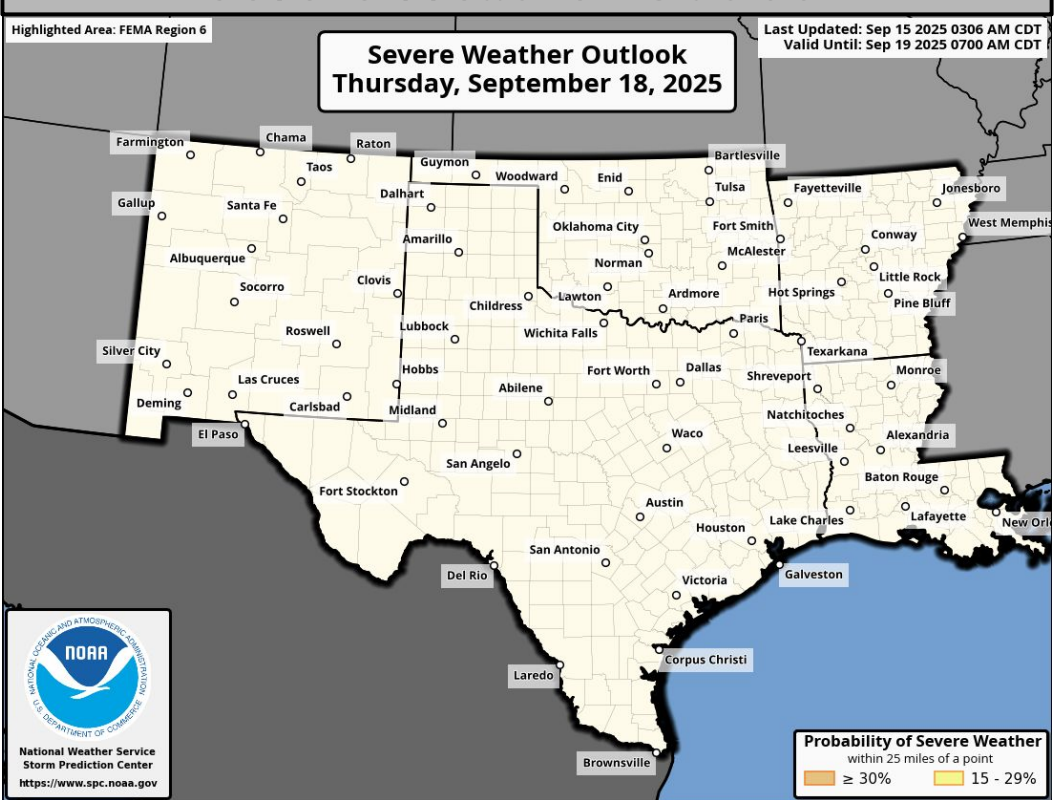


Forecast Rainfall

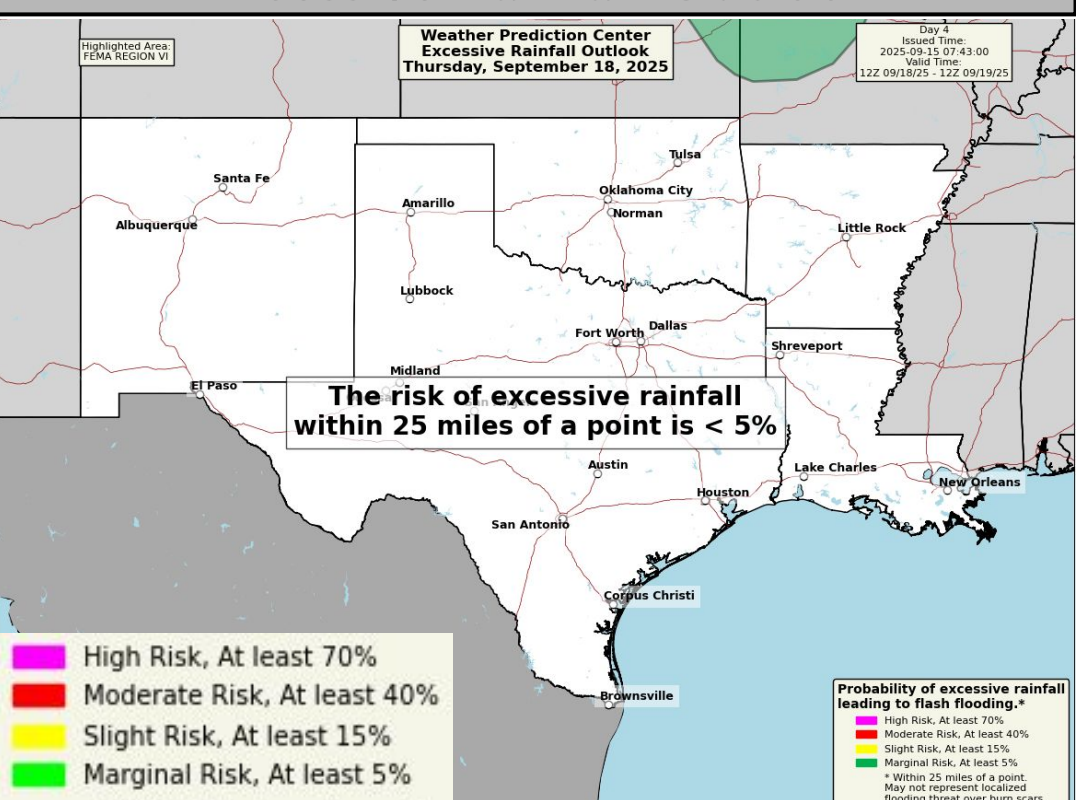


No significant weather expected.

Severe Weather Outlook



Excessive Rainfall Outlook

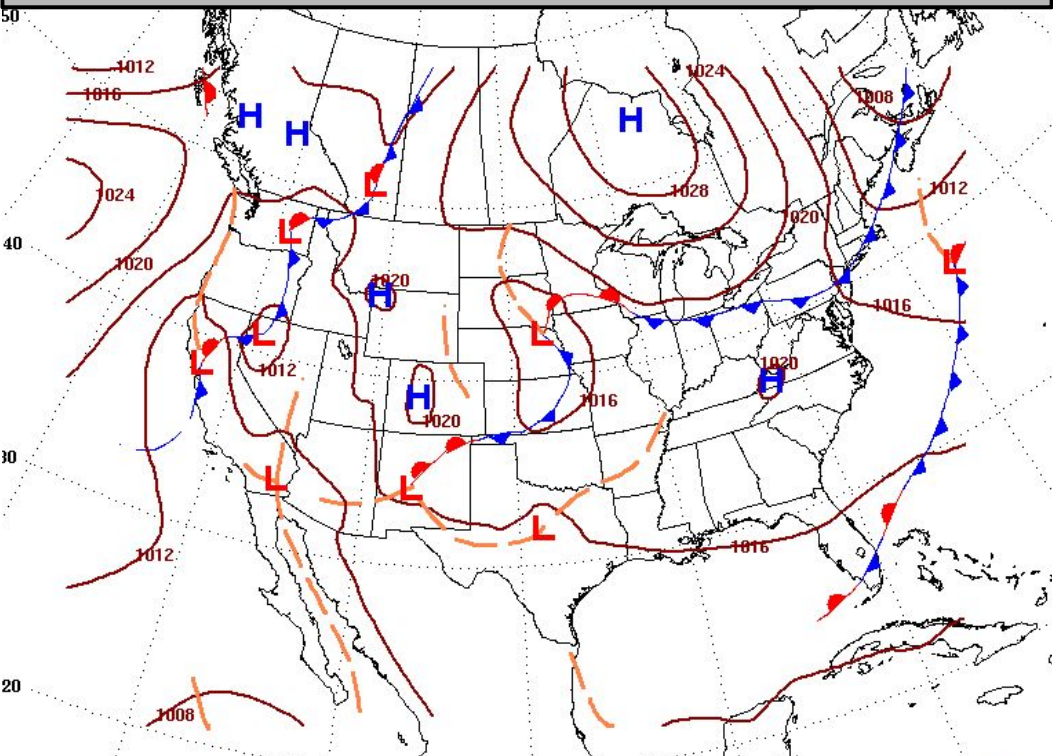


*\*Burn Scar Flash Flooding information on Burn Scar Matrix slides\**

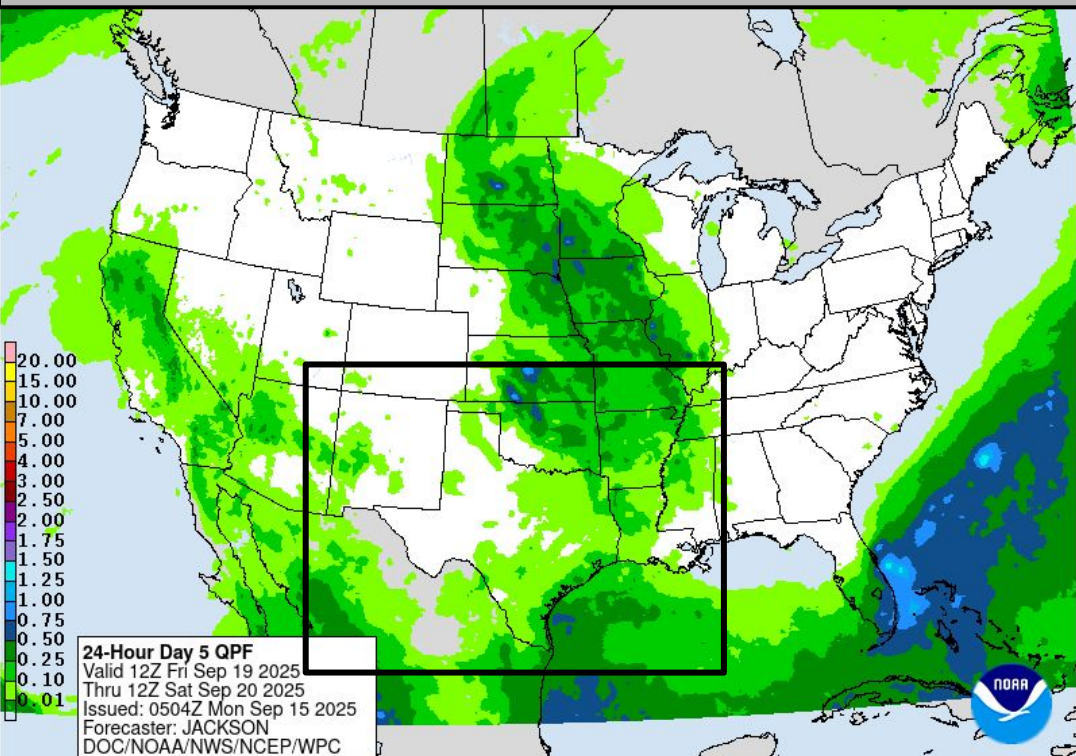


# Friday's Weather

Forecast Chart

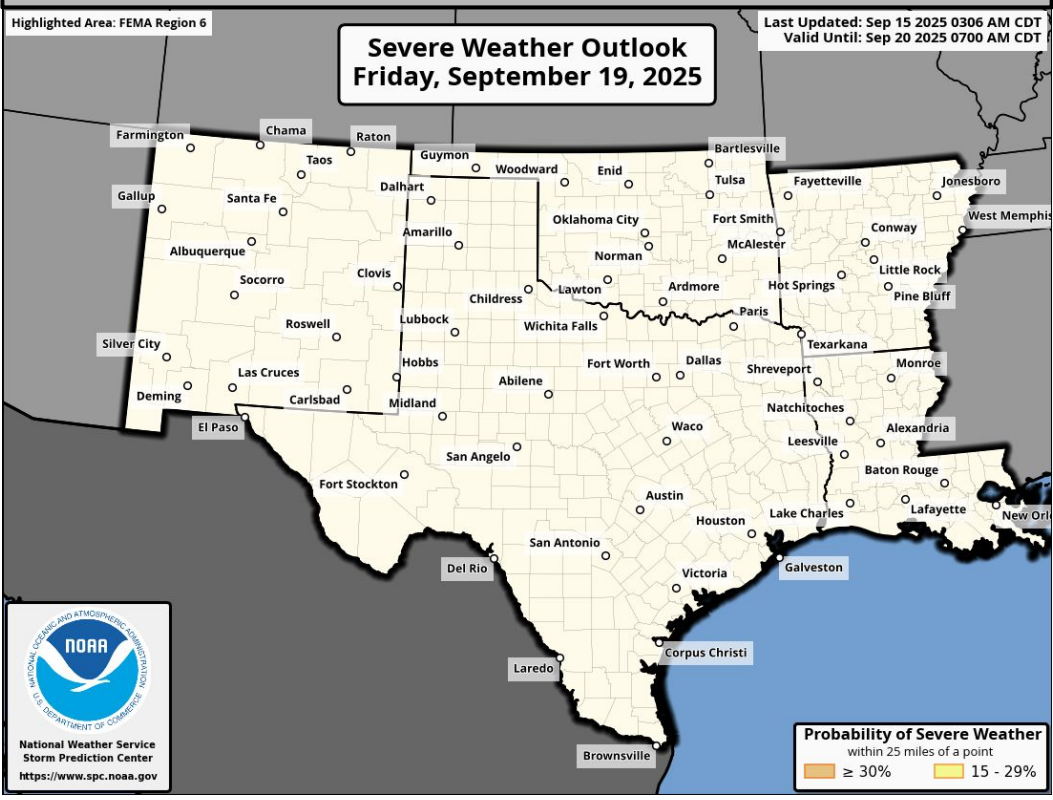


Forecast Rainfall

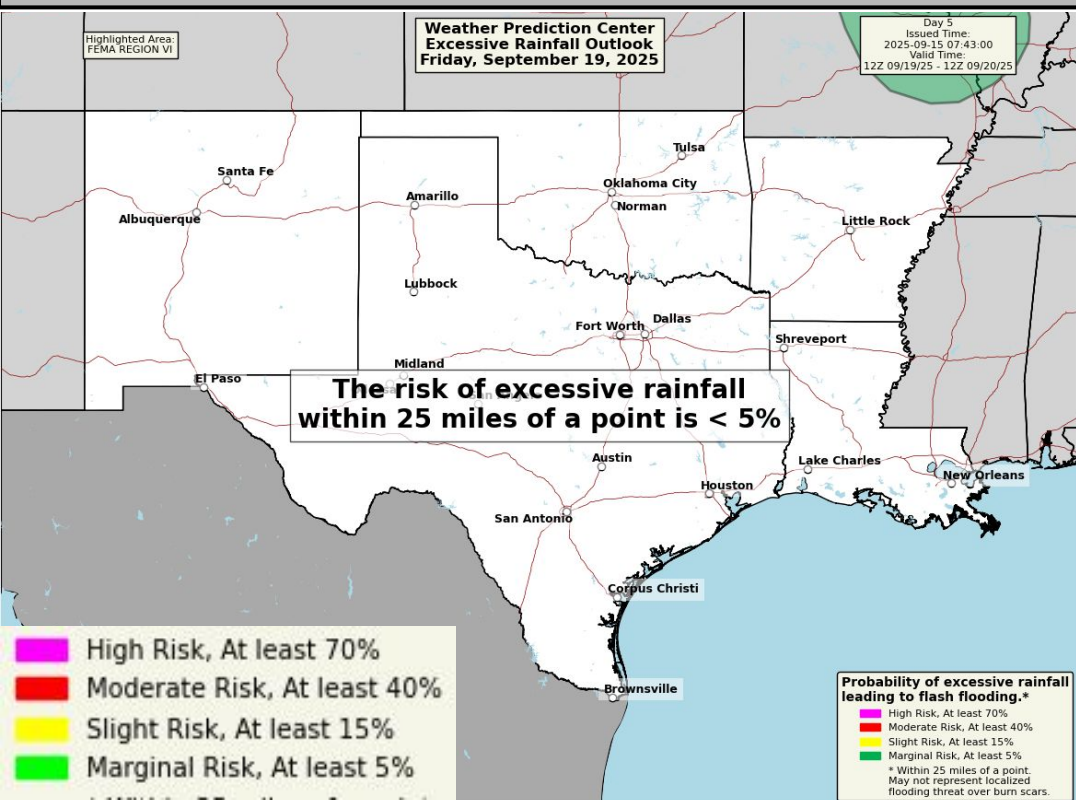


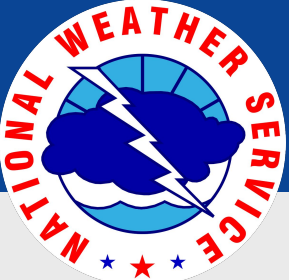
No significant weather expected.

Severe Weather Outlook



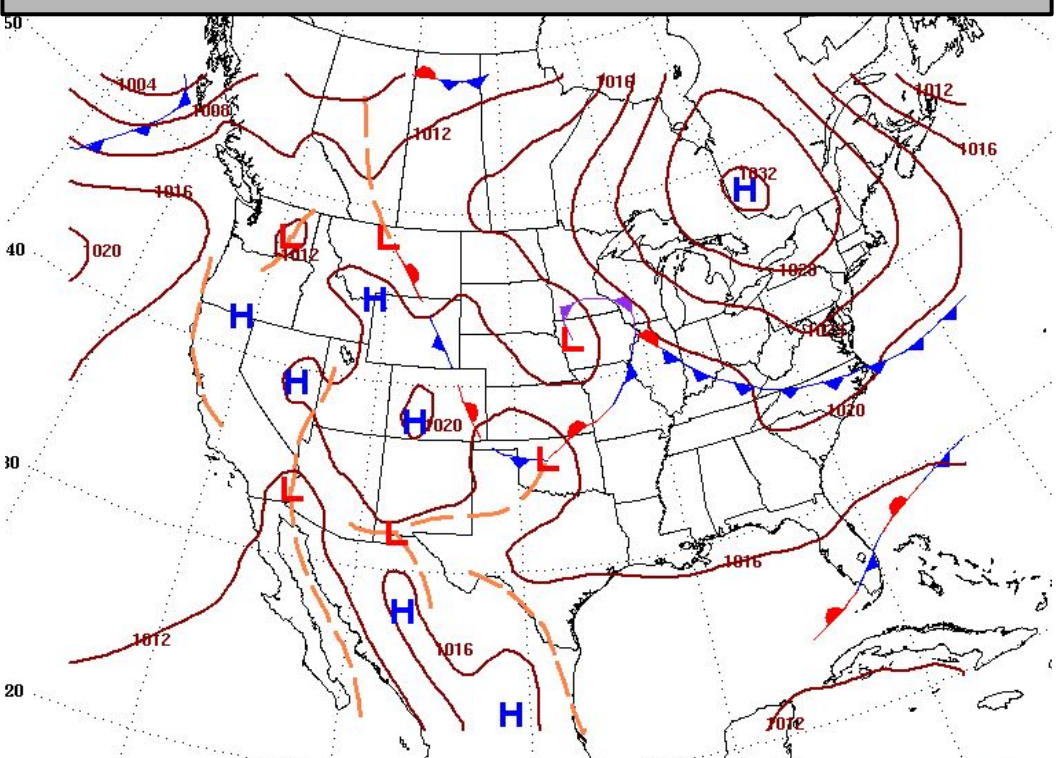
Excessive Rainfall Outlook



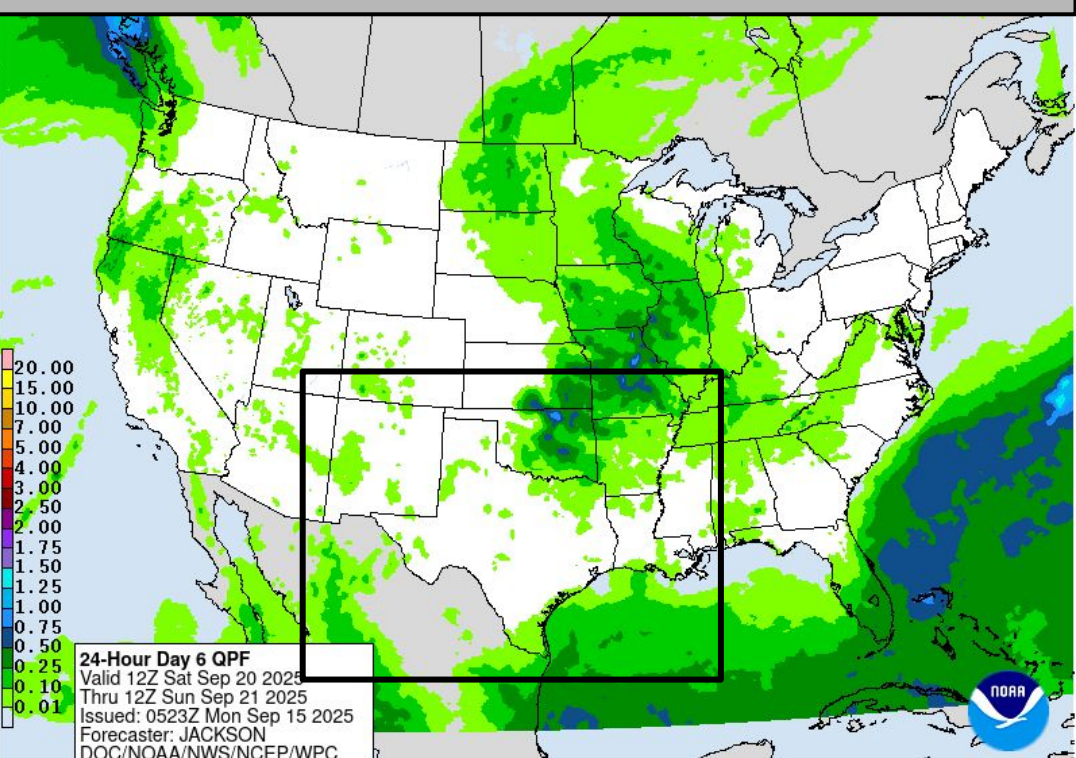


# Saturday's Weather

Forecast Chart

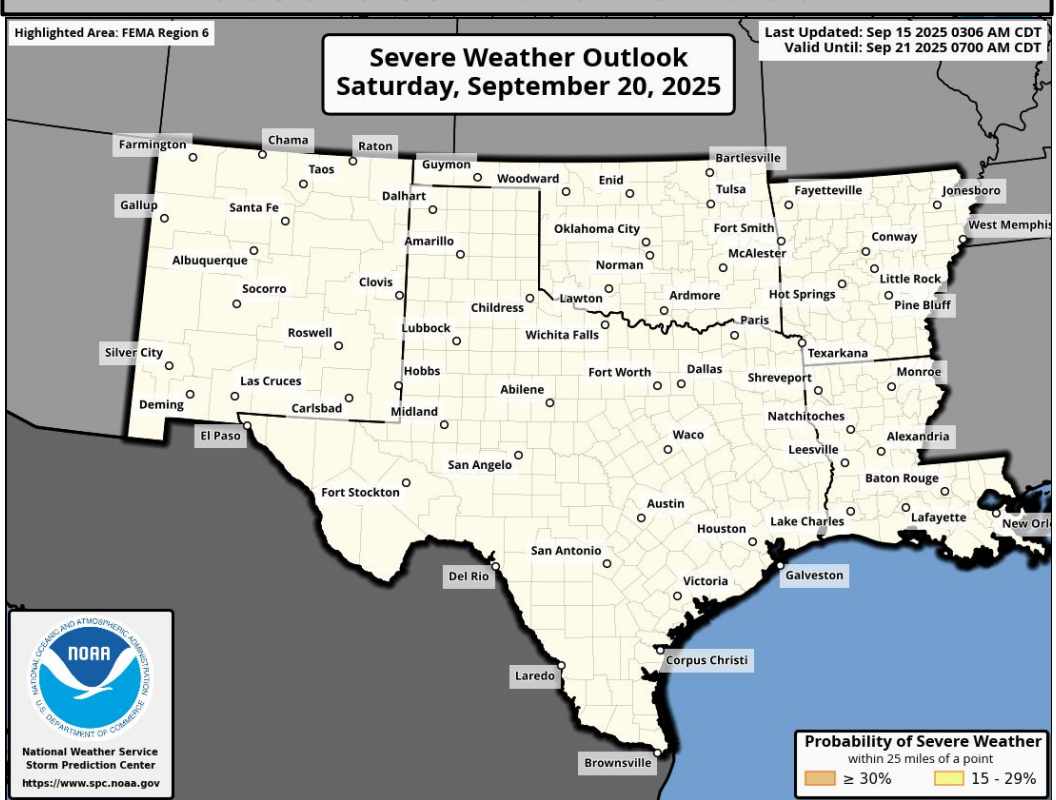


Forecast Rainfall

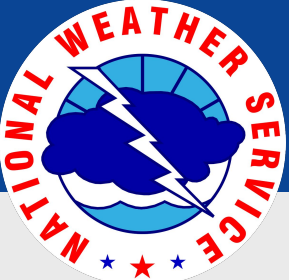


No significant weather expected.

Severe Weather Outlook

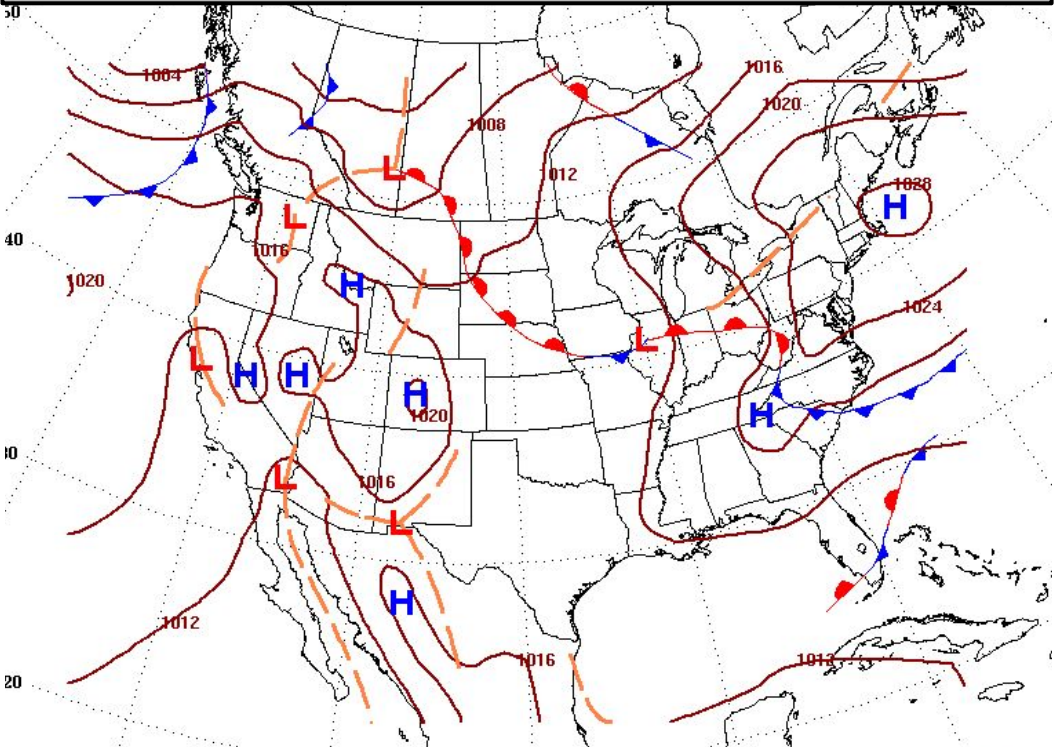


Excessive Rainfall Outlooks  
not available beyond Day 5

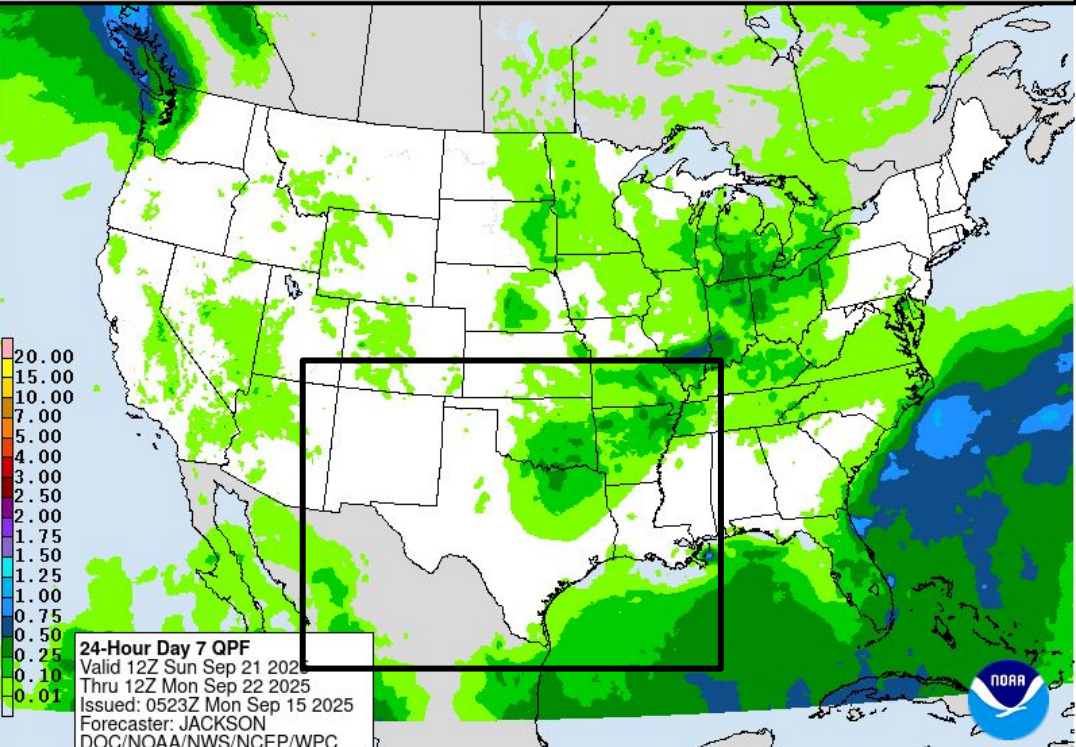


# Sunday's Weather

Forecast Chart

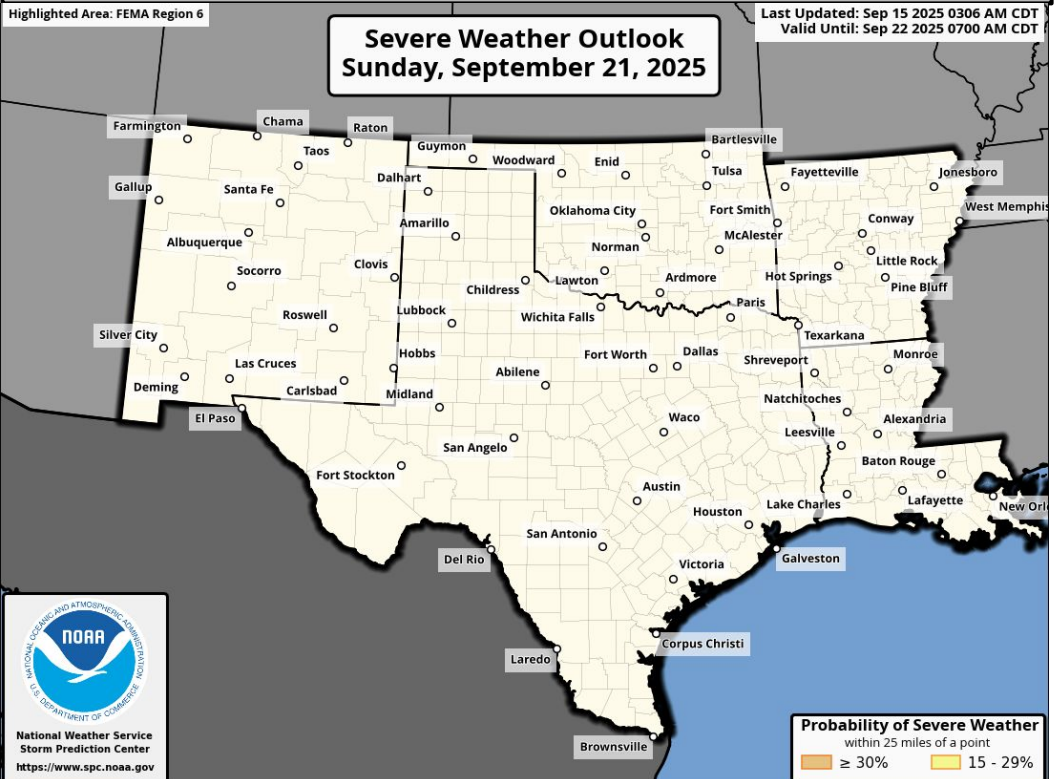


Forecast Rainfall



No significant weather expected.

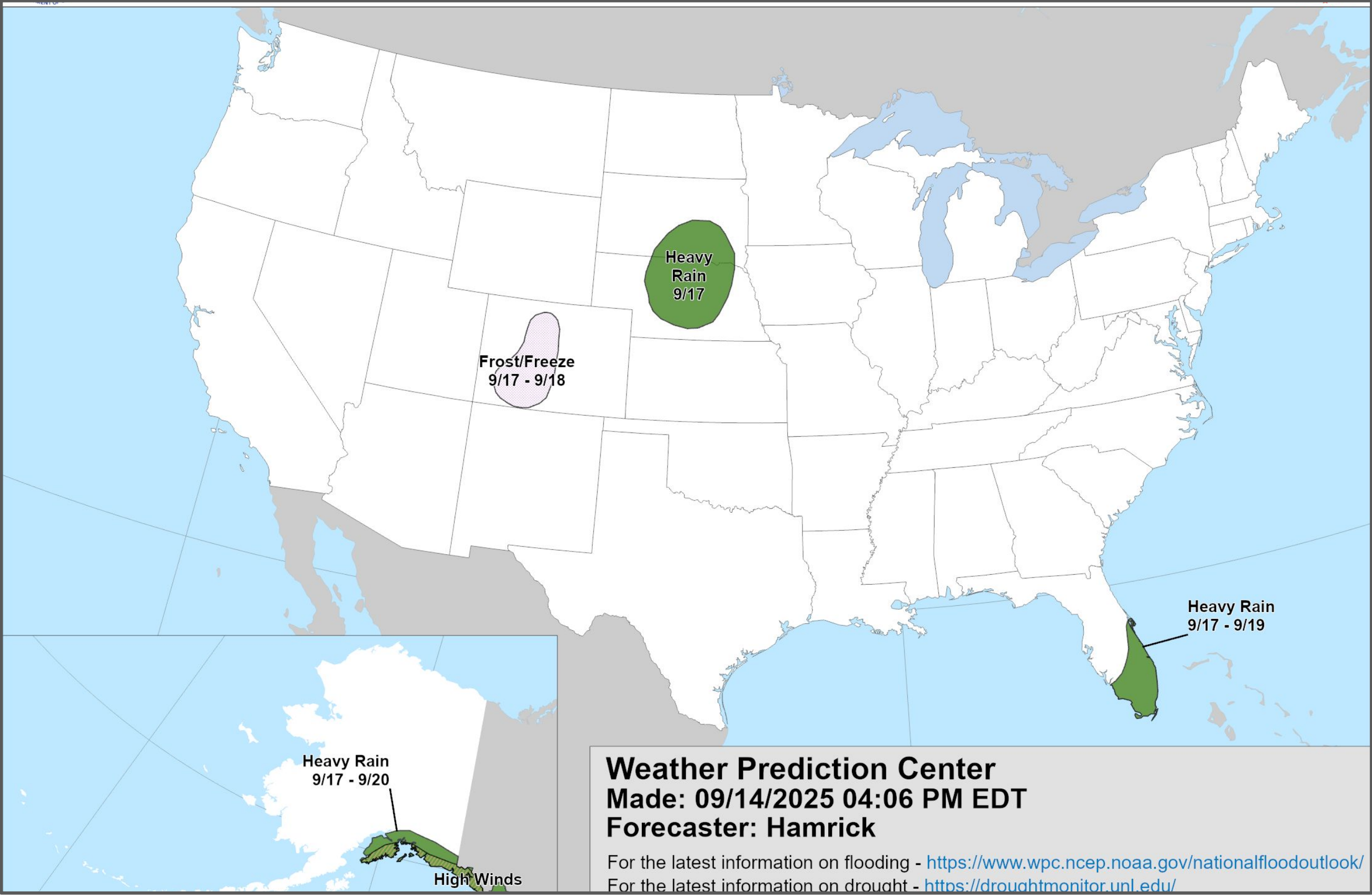
Severe Weather Outlook



Excessive Rainfall Outlooks  
not available beyond Day 5

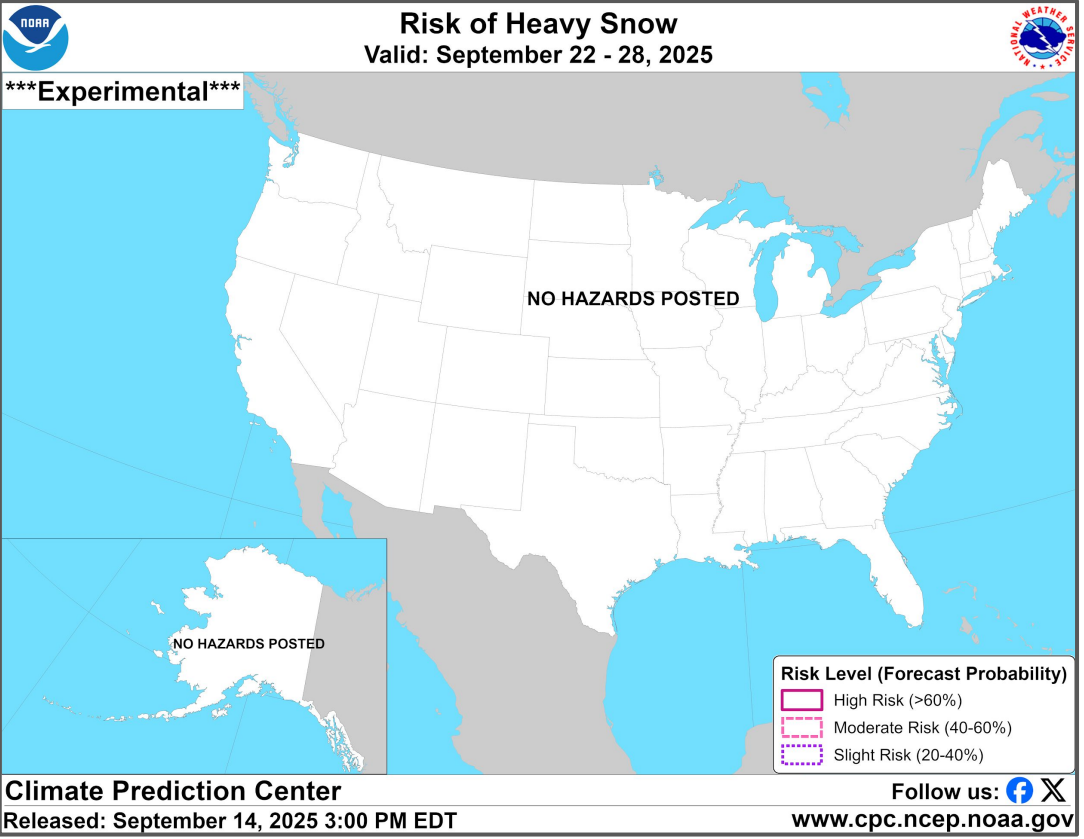
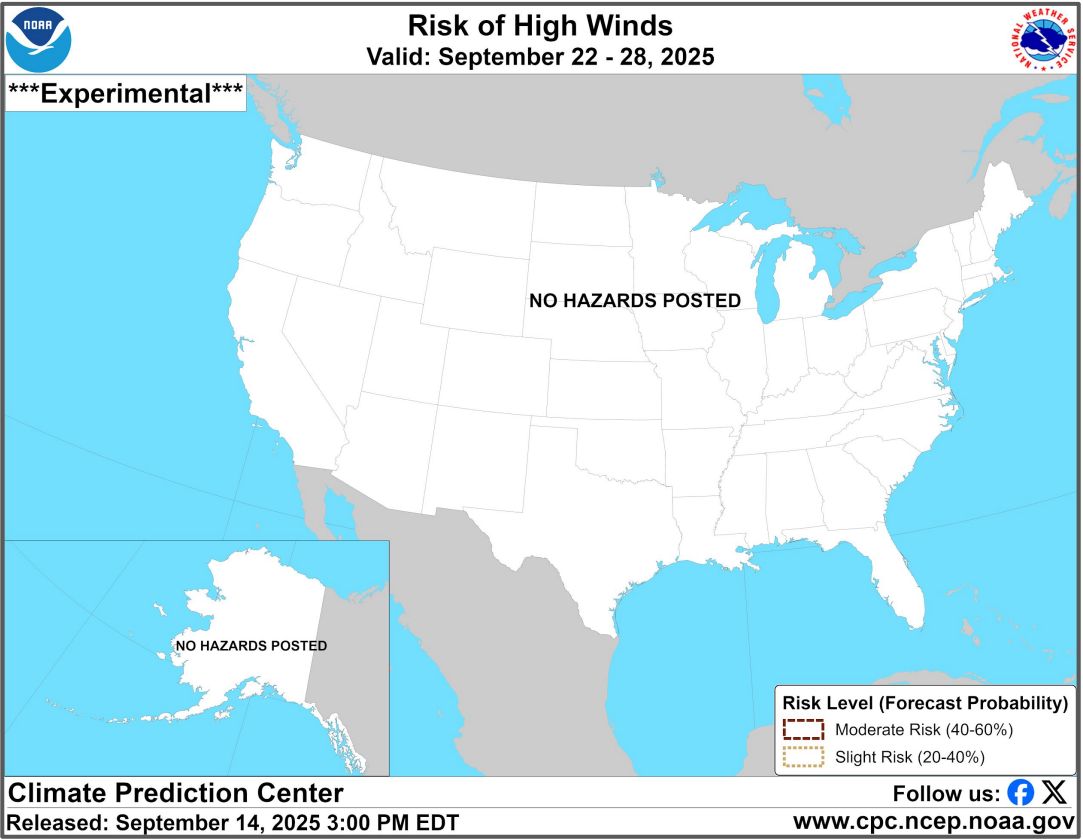
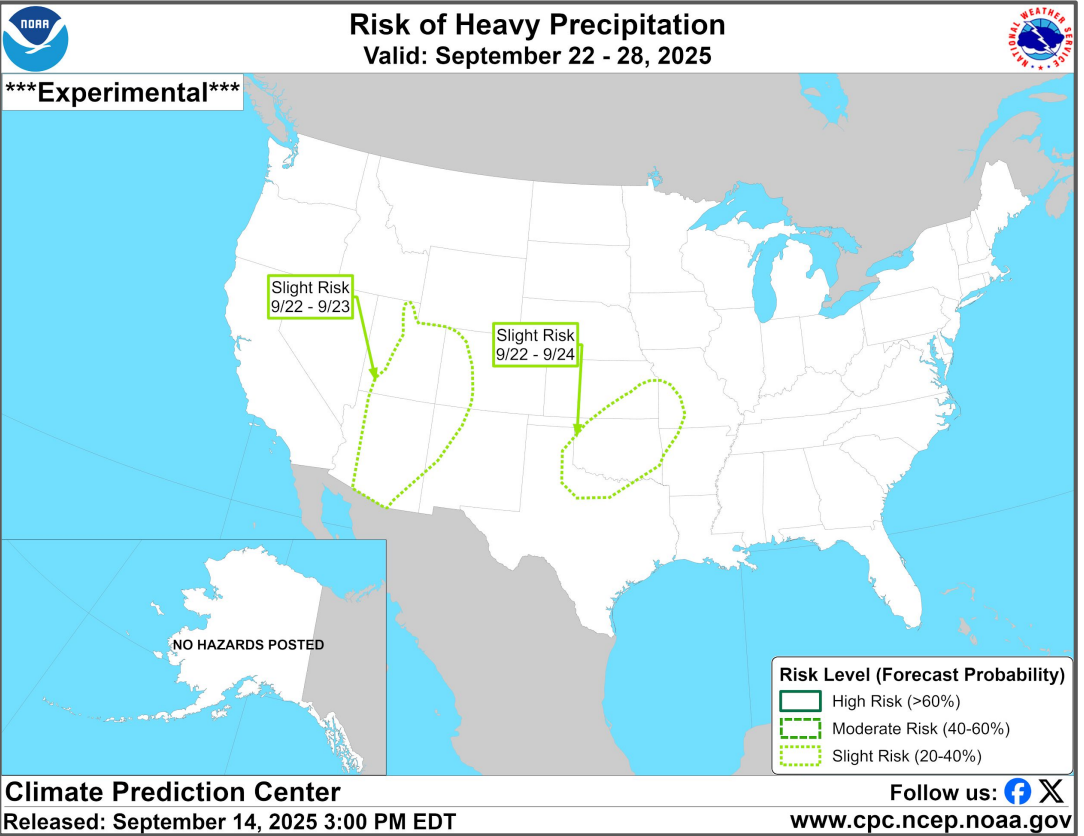
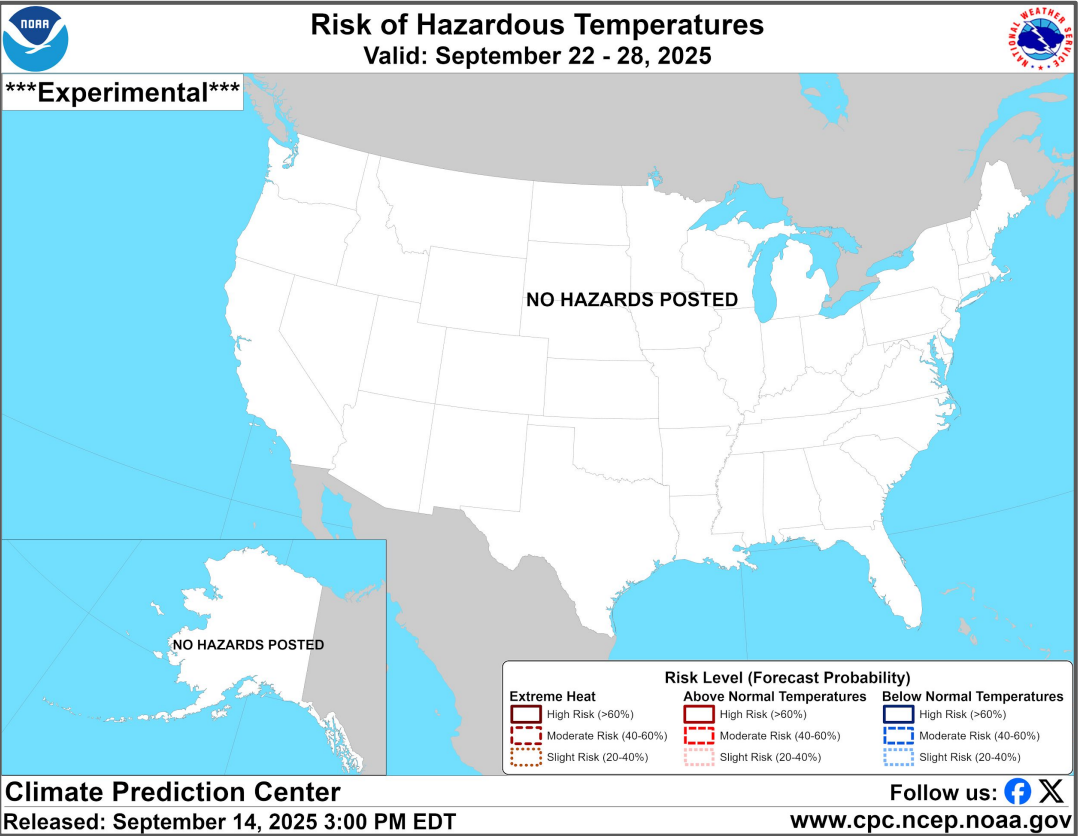
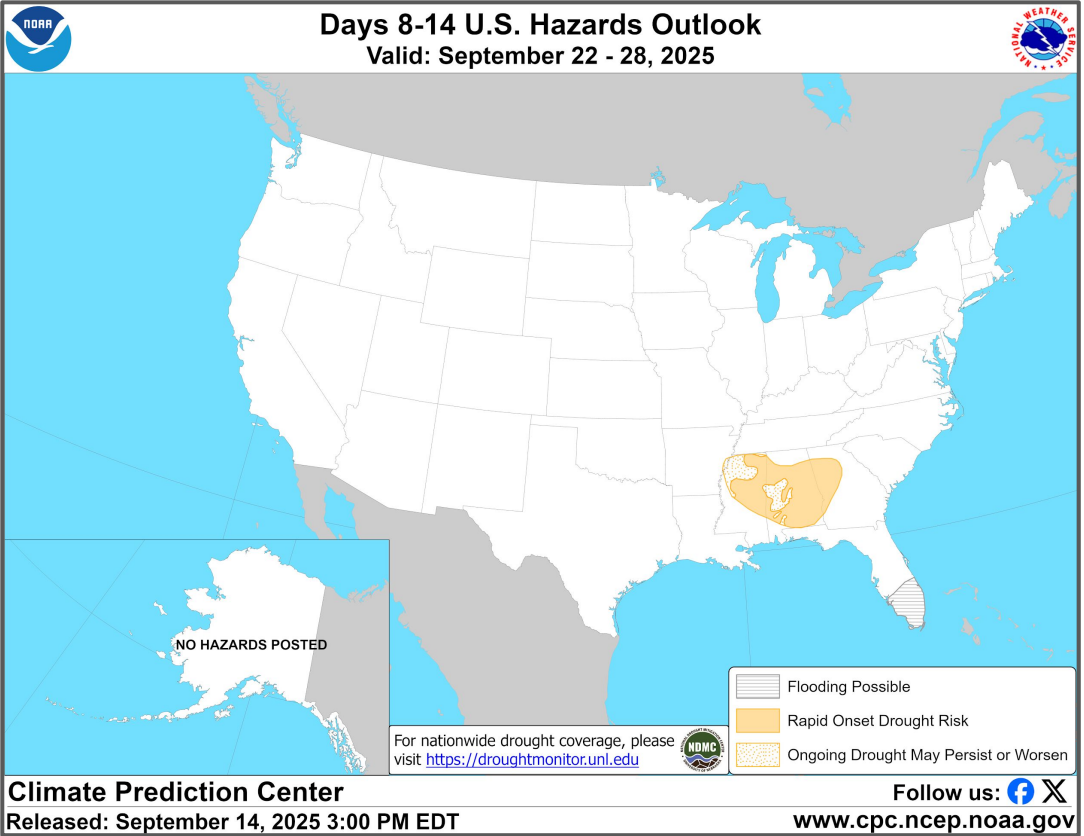


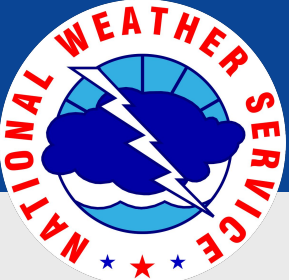
# “Day 3-7” Hazards Outlook





# “Day 8-14” Hazards Outlook

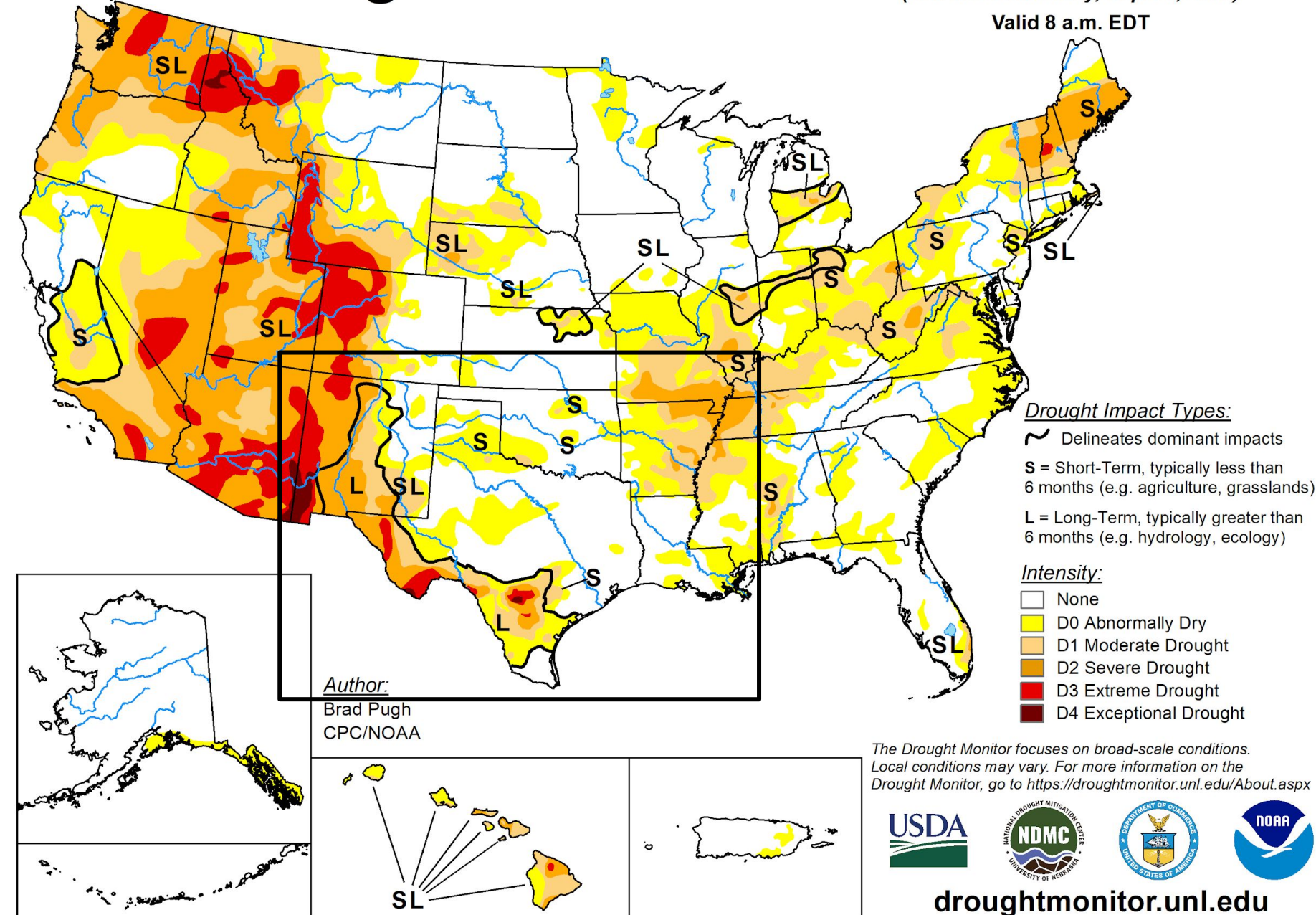




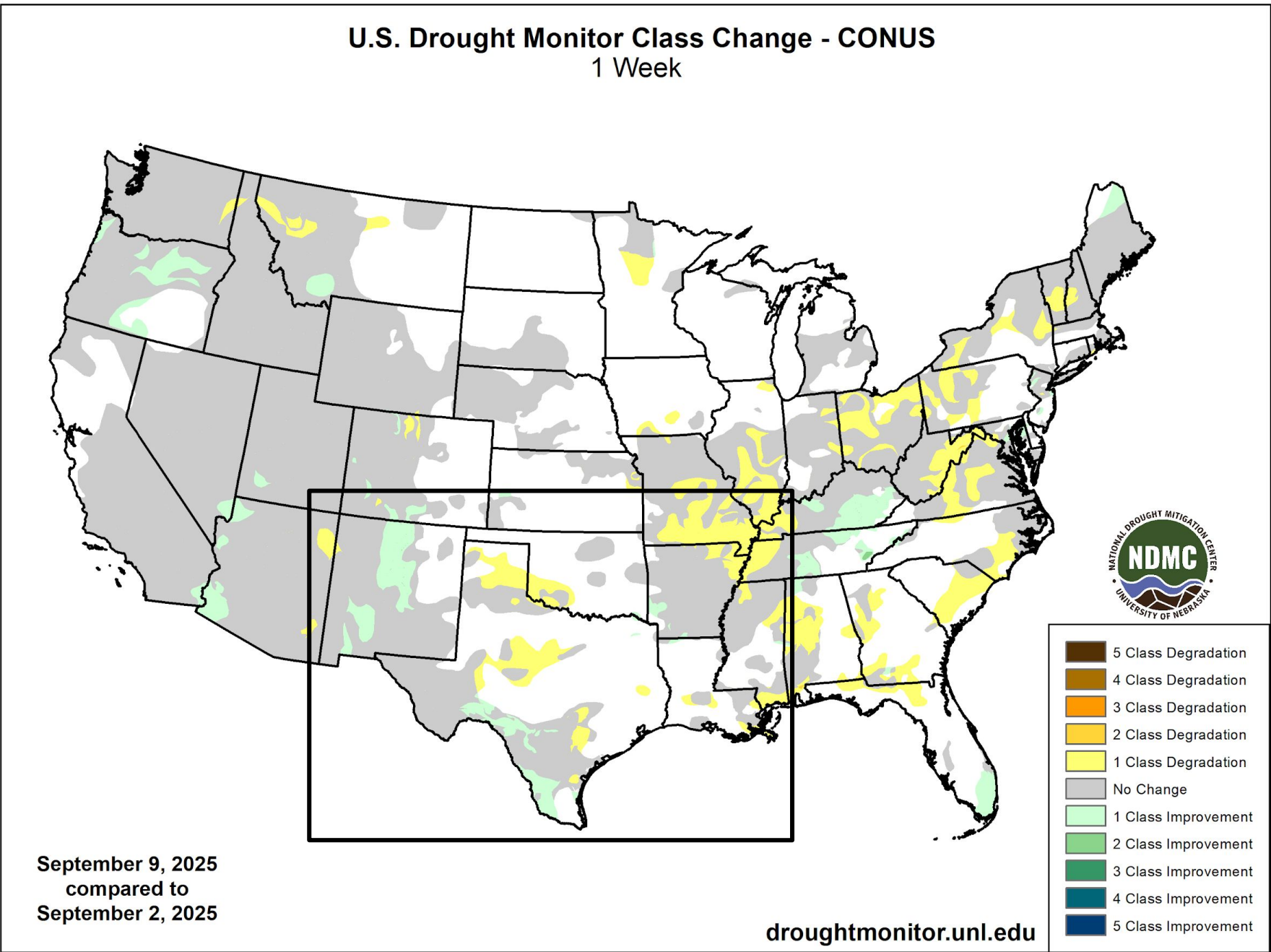
# Drought Monitor

## U.S. Drought Monitor

September 9, 2025  
(Released Thursday, Sep. 11, 2025)  
Valid 8 a.m. EDT



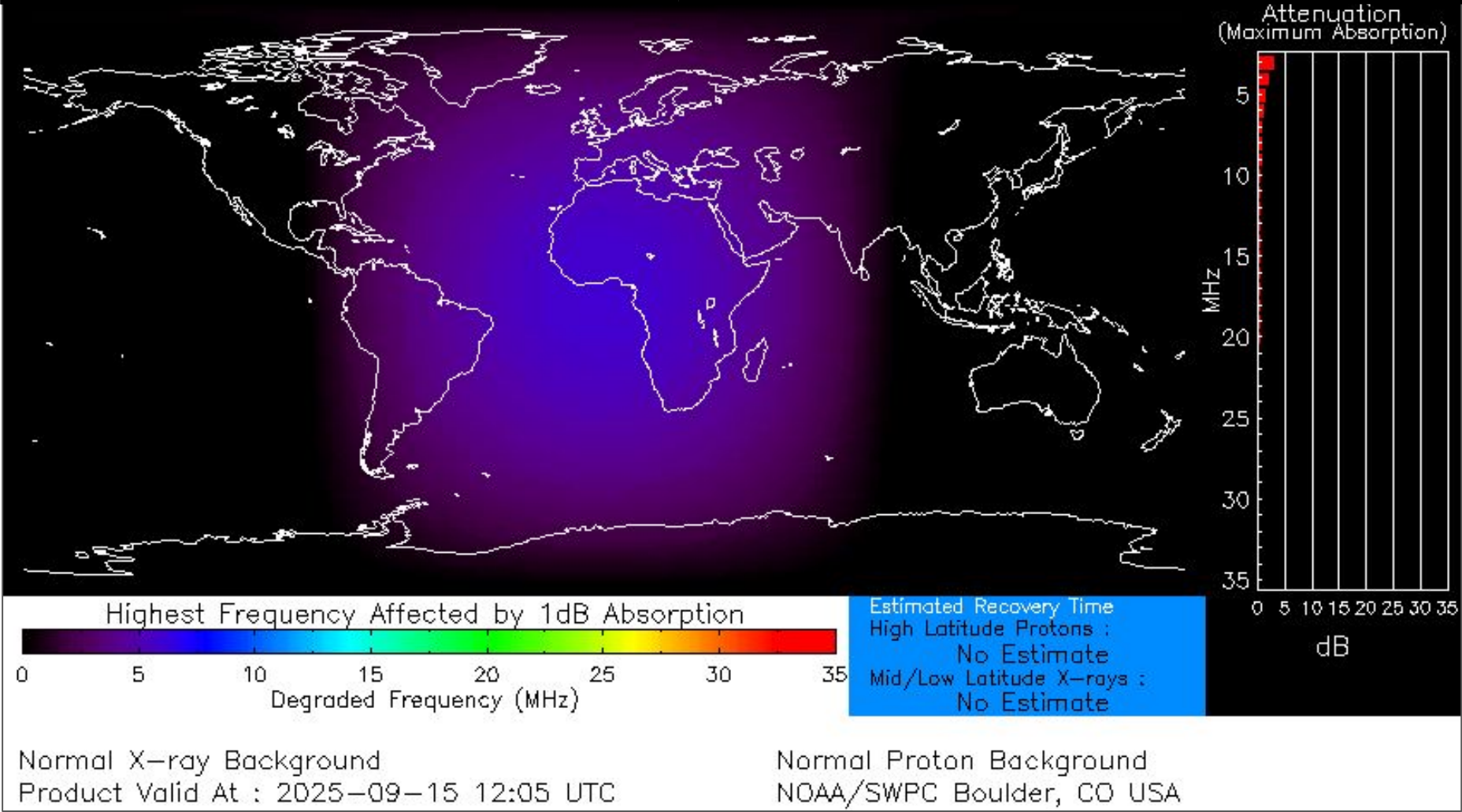
## U.S. Drought Monitor Class Change - CONUS 1 Week





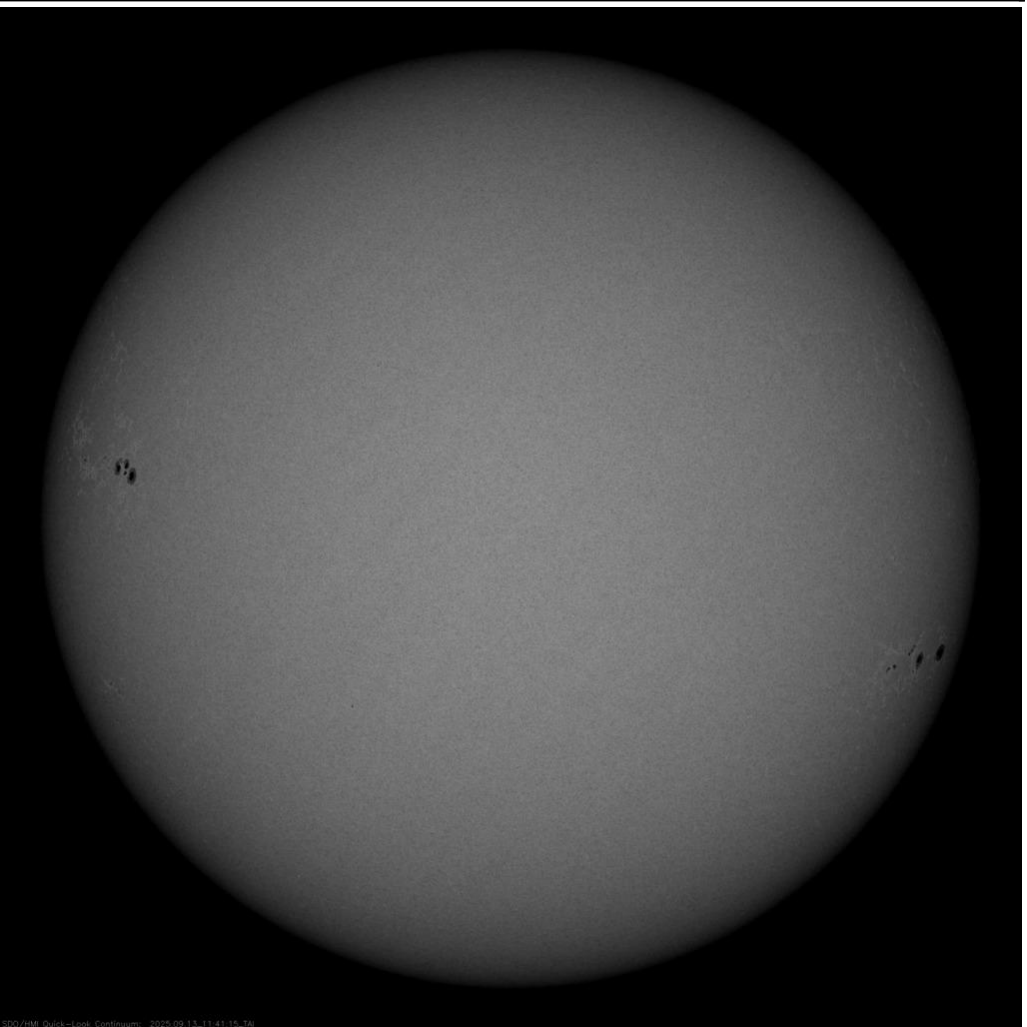
# Space Weather 3-Day Forecast

	Monday, Sep 15	Tuesday, Sep 16	Wednesday, Sep 17
Geomagnetic Storms	Active (Max Kp=4)	Unsettled (Max Kp=3)	Unsettled (Max Kp=3)
Solar Radiation Storm (S1-S5)	1%	1%	1%
Radio Blackout (R1-R2)	25%	25%	25%
Radio Blackout (R3-R5)	1%	1%	1%



[Description of the Space Weather Storm Scales](#)

[Latest 3-Day Space Weather Forecast](#)



## Weather “Threat” Matrix for FEMA Region VI

Color	Definition	Criteria	Example(s)
Green	<b>Little to None</b> Safety: Rarely a Direct Threat to Life and Property Impact Potential: Typically Results in Little Inconvenience to Daily Routines	Severe: Marginal Risk from SPC Flooding: Minor flooding expected over localized areas Tropical: None Fire Weather: No Watches/Warnings, fuel moisture above 10% or green up active	<ul style="list-style-type: none"> <li>Thunderstorms expected over LA this afternoon; a few may produce winds to knock down a few trees</li> <li>Something that happens almost every day in a particular season such as seabreeze storms in coastal TX</li> </ul>
Yellow	<b>Minor</b> Safety: Rarely a Direct Threat to Life and Property Impact Potential: Typically Results in Some Inconvenience to Daily Life	Severe: Slight Risk from SPC Flooding: Nuisance flooded expected for a widespread area, or Minor flooding expected over isolated areas Tropical: A weak tropical wave expected to move towards or near any coastline Fire Weather: Red Flag Watches/Warnings and/or SPC outlines enhanced or critical fire outlook	<ul style="list-style-type: none"> <li>2-3 inches of rainfall expected over central AR today and tonight; some minor (brief) street flooding possible</li> <li>Scattered severe storms possible, one or two tornadoes expected, along with reports of strong winds/wind damage and ~1” hail</li> </ul>
Orange	<b>Moderate</b> Safety: Often Threatening to Life and Property, Some Damage Unavoidable Impact Potential: Typically Results in Minor Disruption to Daily Life	Severe: Enhanced Risk from SPC Flooding: Minor flooding expected over a widespread area (including urban locations), or Moderate flooding expected over isolated areas Tropical: A Tropical Storm expected to move towards or near any coastline Fire: Critical fire outlook for more than 2 consecutive days, Warnings for 2 or more consecutive days, D3-D4 drought conditions	<ul style="list-style-type: none"> <li>A snow/sleet mix is expected to move through or near the DFW area tomorrow morning; travel impacts likely</li> <li>Numerous severe storms possible, a few tornadoes possible along with several reports of wind damage along with damaging hail</li> <li>Some large fires reported, burn bans advertised, critical conditions expected</li> </ul>
Red	<b>Major</b> Safety: Extensive Property Damage Likely, Life Saving Actions Also will be Needed Impact Potential: Will likely result in Large Disruption to Daily Life	Severe: Moderate Risk from SPC Flooding: Moderate flooding expected over a widespread area (including urban locations) Tropical: A Hurricane expected to move towards or near any coastline Fire: Large areas of critical conditions for 2 or more days, Warnings for 3 or more days, Severe to extreme drought	<ul style="list-style-type: none"> <li>A Category 1 hurricane will be moving towards the NW Gulf in the next few days</li> <li>Widespread severe storms likely, strong tornadoes, widespread wind damage, and destructive hail</li> <li>Large fires ongoing throughout the area with critical fire weather conditions expected to continue</li> </ul>
Purple	<b>Extreme</b> Safety: Property Damage Unavoidable, Immediate Action to Save Life will be Needed Impact Potential: Typically Results in Long-Lived Widespread Major Disruption to Daily Life	Severe: High Risk from SPC Flooding: Major flooding expected over a widespread area (including urban locations) Tropical: A Major Hurricane (Cat3 or greater) expected to move towards or near any coastline Fire: Large area of critical conditions for 2 or more days, Warnings for 3 or more days, Long term (months) of severe to extreme drought	<ul style="list-style-type: none"> <li>A Category 4 hurricane is headed towards the SE LA; major storm surge, flooding and damaging winds anticipated to begin tomorrow</li> <li>Widespread severe storms expected, tornado outbreak probable with long-lived, very widespread and particularly intense storms</li> </ul>

Criteria for the color codes in this briefing is to the left, please provide any feedback to [sr-srh.roc@noaa.gov](mailto:sr-srh.roc@noaa.gov)



# National Weather Service

Southern Region Headquarters

Regional Operations Center

Fort Worth, TX



**Phone:** (682) 703-3747



**Facebook:** NWSSouthern



**E-mail:** [sr-srh.roc@noaa.gov](mailto:sr-srh.roc@noaa.gov)



**X:** NWSSouthern

**WWW**

**Web:** [www.weather.gov/srh](http://www.weather.gov/srh)

