

Tropical Weather Awareness



Seven-Day Graphical Tropical Weather Outlook National Hurricane Center Miami, Florida



No Disturbances

www.hurricanes.gov



07:23 AM EDT
Mon Jun 08 2026
100W 90W 80W 70W 60W 50W 40W 30W 20W

7-Day Cyclone Formation Chance and Area: < 40% 40-60% > 60%

⊘ Development not expected

Tropical or Subtropical Cyclone: ○ Depression ◉ Storm 🌀 Hurricane

⊗ Post-Tropical Cyclone or Remnants

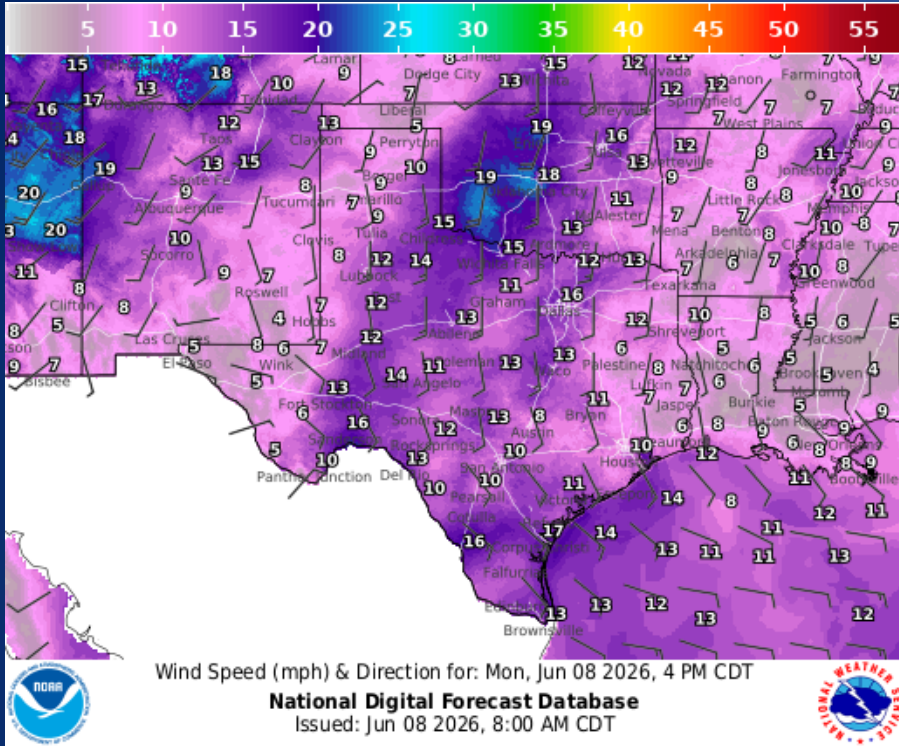
Incidents Reported to the State Operations Center (last 24 hours)

DATE	SUBJECT	LOCATION
06/07/26	Update Report #3 of a Water Outage	La Salle County
06/07/26	Final Report of a Boil Water Notice	Montague County
06/07/26	Initial Report of a Boil Water Notice	Montague County
06/07/26	Final Report of a Boil Water Notice	Medina County

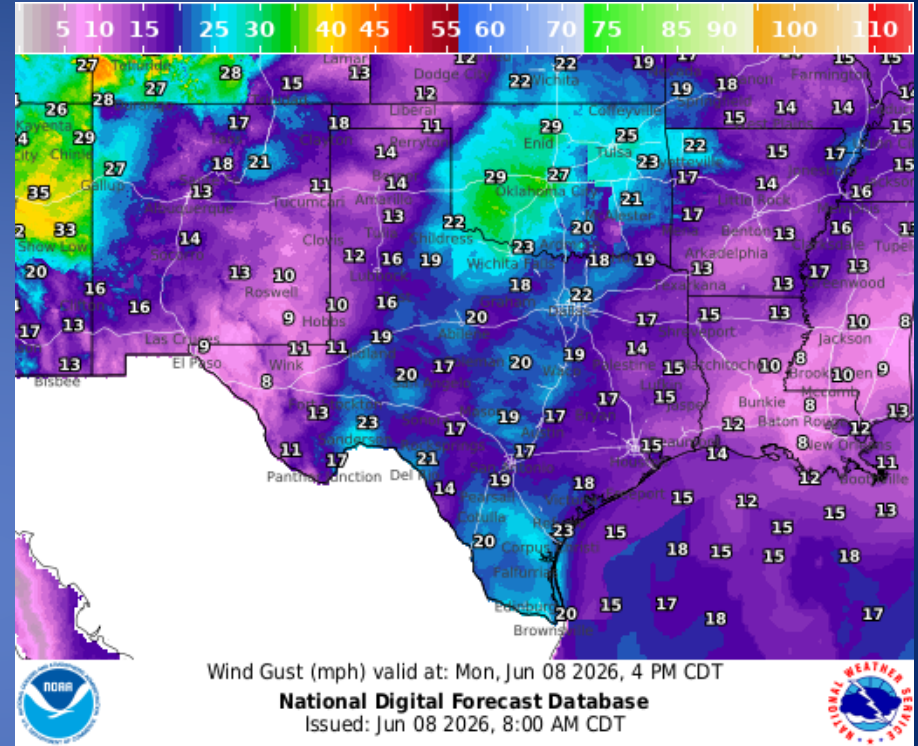
Informational Products Distributed by the State Operations Center

DATE	SUBJECT
06/07/26	Daily Situation Report [25-0026 02JUL Severe Weather]
06/07/26	Daily Situation Report [26-0001 Wildfire Season 2026]
06/07/26	Daily Situation Report [26-0013 18MAY Severe Weather]
06/07/26	Daily Situation Report [26-0015 01JUN Severe Weather]
06/07/26	Daily Situation Report [26-0016 New World Screwworm Response]
06/07/26	NWS El Paso, TX/Santa Teresa, NM: Situational Awareness Briefing for Upcoming Heat
06/08/26	NWS El Paso, TX/Santa Teresa, NM: Weather Hazards Outlook
06/08/26	NWS Threat Brief

Weather Forecast

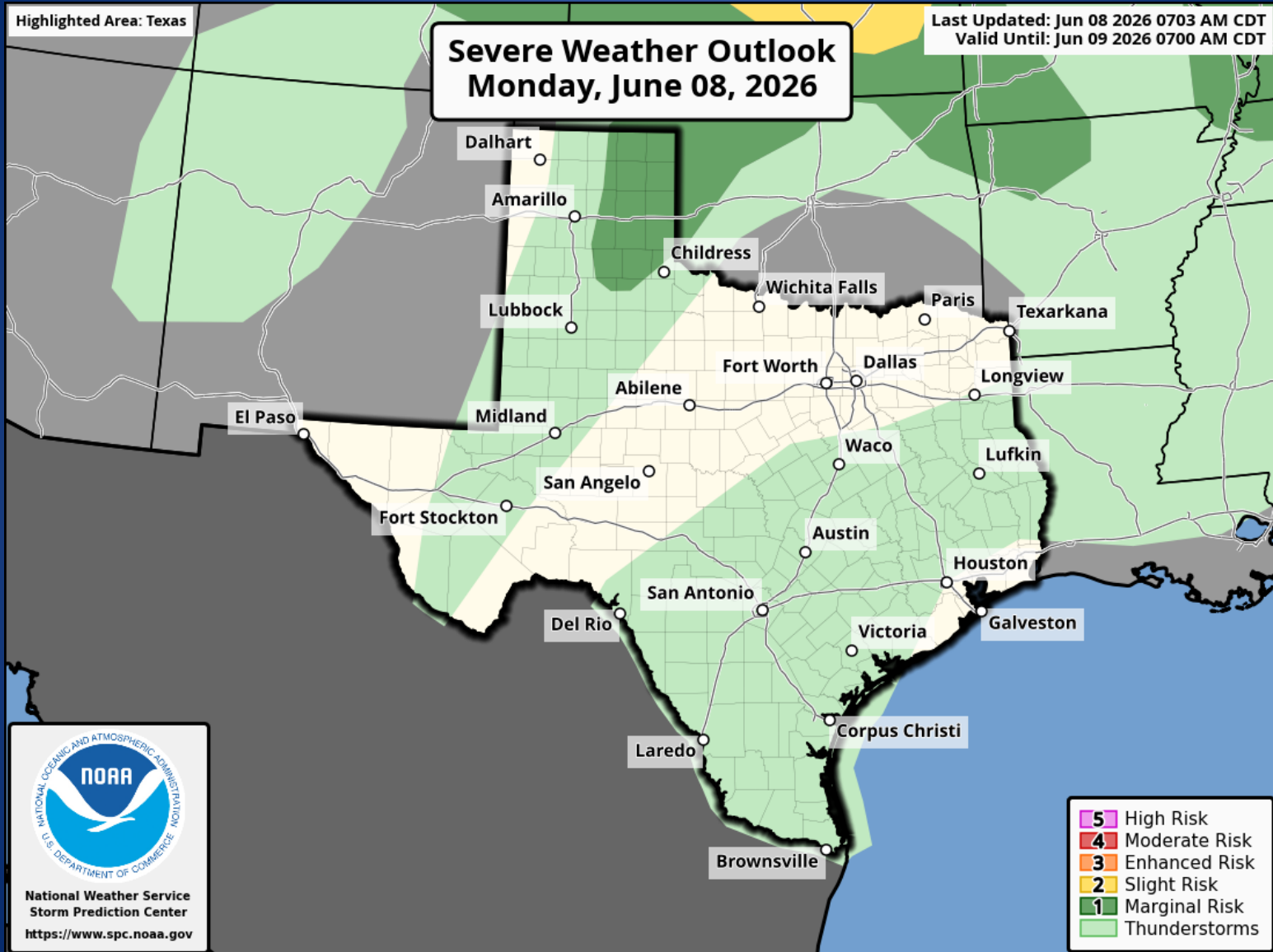


Wind Speeds



Gusts

Hazardous Weather

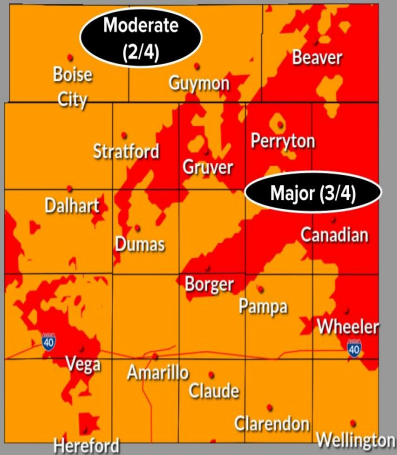


Hazardous Weather

Potentially Impactful Heat Today

Updated:
Mon Jun 08, 2026 4:21 AM

Heat Risk Monday



What Does This Mean?

- 1 - Minor:** Minor risk of heat-related impacts, primarily those susceptible to being affected by heat
- 2 - Moderate:** Moderate risk of heat-related impacts, primarily those susceptible to being affected by heat
- 3 - Major:** Major risk of heat-related impacts for anyone without effective cooling and/or hydration
- 4 - Extreme:** Extreme risk of heat-related impacts for anyone without effective cooling and/or hydration

Be Prepared!



- Heat related illnesses are possible
- Avoid strenuous work during the afternoon
- Stay hydrated and cool!



National Weather Service | Amarillo

Follow Us: @NWSAmarillo

Hot temperatures are expected to impact the combined Panhandles. Moderate to major heat risk is forecast this afternoon. Make sure you have ways to stay cool while spending time outdoors!

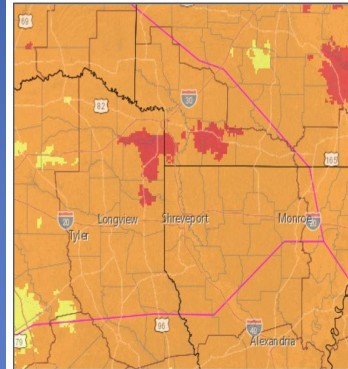
Hot Start to the Work Week will only get **HOTTER**

Turn Around, Don't Drown. Latest info at weather.gov/shv

Heat Risk Today: mostly Moderate with some Major Risk areas across NE TX and SW AR.



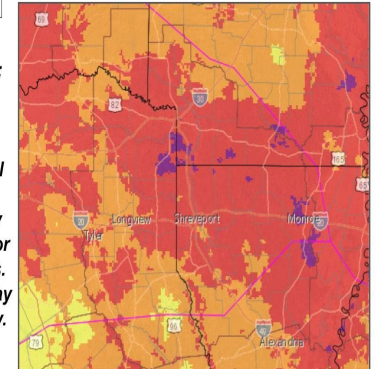
Heat Risk by Friday: Mostly Major with some Extreme Risk across NE TX, SW AR and NE LA.



While Heat Risk Today is elevated:



This Heat Risk will increase thru the work week and by Friday, will be Major across most areas. Heat Advisories may become necessary.



NATIONAL WEATHER SERVICE - SHREVEPORT, LA

Follow: @NWSShreveport

weather.gov/shv

Updated: Mon Jun 08, 2026 1:02 AM

Afternoon high temperatures this week will combine with high humidity resulting in an increasing Heat Risk as we go through the work week. Heat Advisories may become necessary later this week.

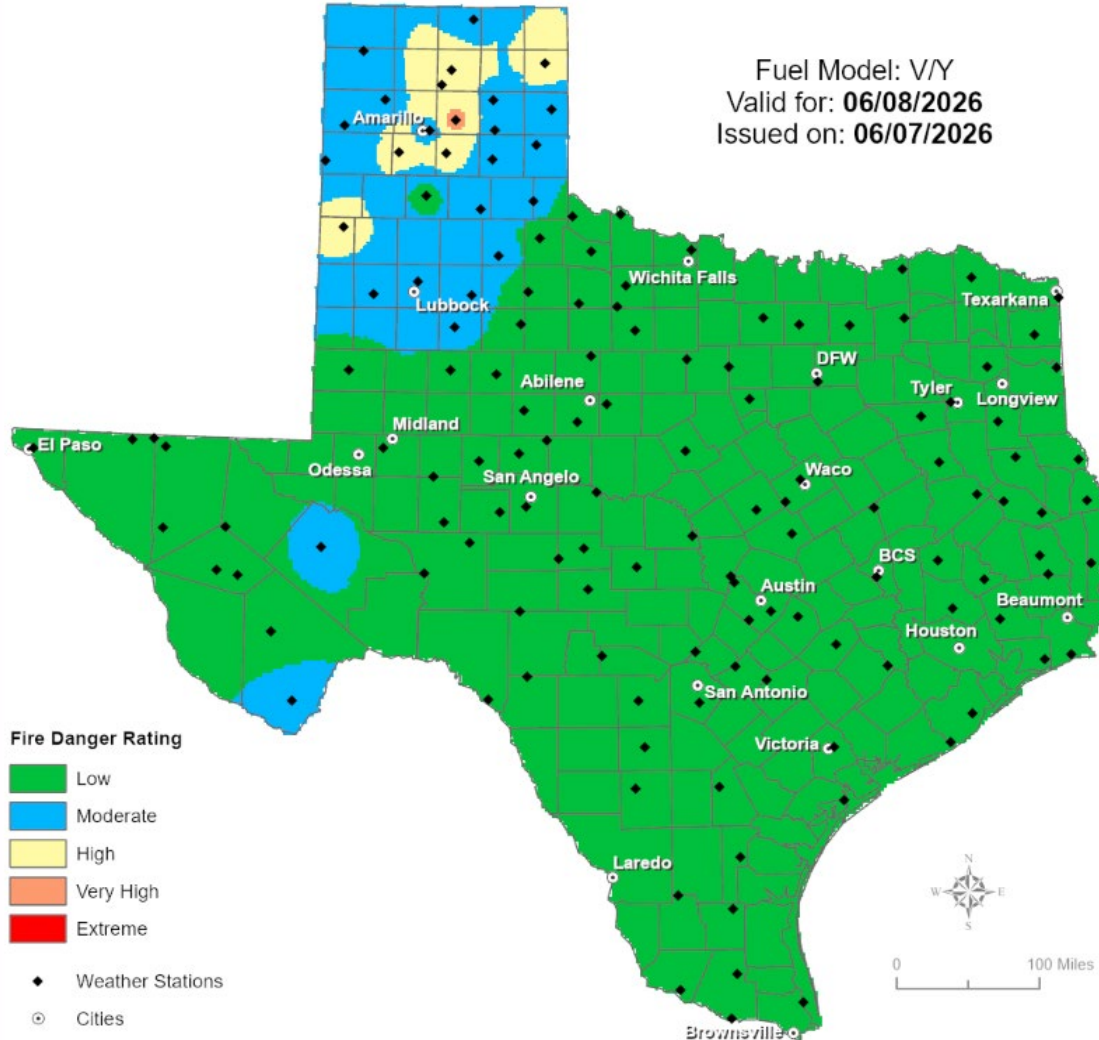
Weather Advisory/Statement/Watch/Warning Issued

DATE	WARNING TYPE	LOCATION
06/07/26	Flood Advisory	Archer, Collin, Cooke, Dallas, Denton, Ellis, Hunt, Johnson, Kaufman, Rockwall, Tarrant, Wichita, and Wise Counties
06/07/26	Special Weather Statement	Bowie, Camp, Cass, El Paso, Hudspeth, Morris, Red River, Titus, and Upshur Counties
06/07/26	Rip Current Statement	Brazoria, Galveston, and Matagorda
06/07/26	Heat Advisory	Hemphill, Hutchinson, and Roberts Counties
06/07/26	Flood Warning	Dallas, Ellis, Hardin, Hunt, Jefferson, Kaufman, and Rockwall Counties
06/07/26	Severe Thunderstorm Warning	Bowie County
06/07/26	Airport Weather Warning	Dallas and Tarrant Counties
06/08/26	Rip Current Statement	Aransas, Calhoun, Kleberg, Nueces, Refugio, and San Patricio Counties

Fire Danger Forecast

Forecast Fire Danger

Fuel Model: V/Y
Valid for: **06/08/2026**
Issued on: **06/07/2026**



- Fire Danger Rating**
- Low
 - Moderate
 - High
 - Very High
 - Extreme
- ◆ Weather Stations
○ Cities



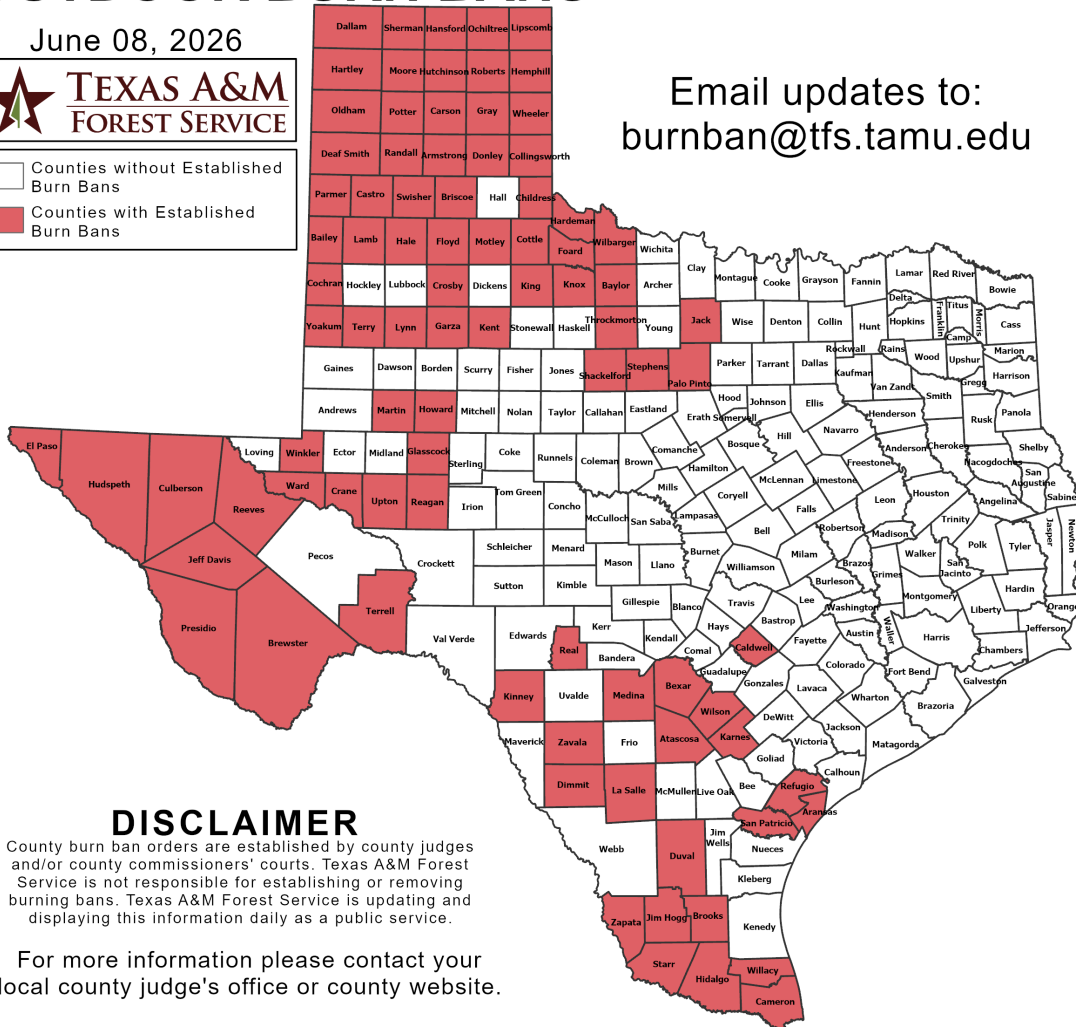
Burn Ban

OUTDOOR BURN BANS

June 08, 2026



Counties without Established Burn Bans
 Counties with Established Burn Bans



Email updates to:
burnban@tfs.tamu.edu

Counties with Burn Bans: 87

- Aransas
- Armstrong
- Atascosa
- Bailey
- Baylor
- Bexar
- Brewster
- Briscoe
- Brooks
- Caldwell
- Cameron
- Carson
- Castro
- Childress
- Cochran
- Collingsworth
- Cottle
- Crane
- Crosby
- Culberson
- Dallam
- Deaf Smith
- Dimmit
- Donley
- Duval
- El Paso
- Floyd
- Foard
- Garza
- Glasscock
- Gray
- Hale
- Hansford
- Hardeman
- Hartley
- Hemphill
- Hidalgo
- Howard
- Hudspeth
- Hutchinson
- Jack
- Jeff Davis
- Jim Hogg
- Karnes
- Kent
- King
- Kinney
- Knox
- Lamb
- La Salle
- Lipscomb
- Lynn
- Martin
- Medina
- Moore
- Motley
- Ochtildree
- Oidham
- Palo Pinto
- Parmer
- Potter
- Presidio
- Randall
- Reagan
- Real
- Reeves
- Refugio
- Roberts
- San Patricio
- Shackelford
- Sherman
- Starr
- Stephens
- Swisher
- Tarrant
- Terry
- Throckmorton
- Upton
- Ward
- Wheeler
- Wilbarger
- Willacy
- Wilson
- Winkler
- Yoakum
- Zapata
- Zavala

DISCLAIMER

County burn ban orders are established by county judges and/or county commissioners' courts. Texas A&M Forest Service is not responsible for establishing or removing burning bans. Texas A&M Forest Service is updating and displaying this information daily as a public service.

For more information please contact your local county judge's office or county website.

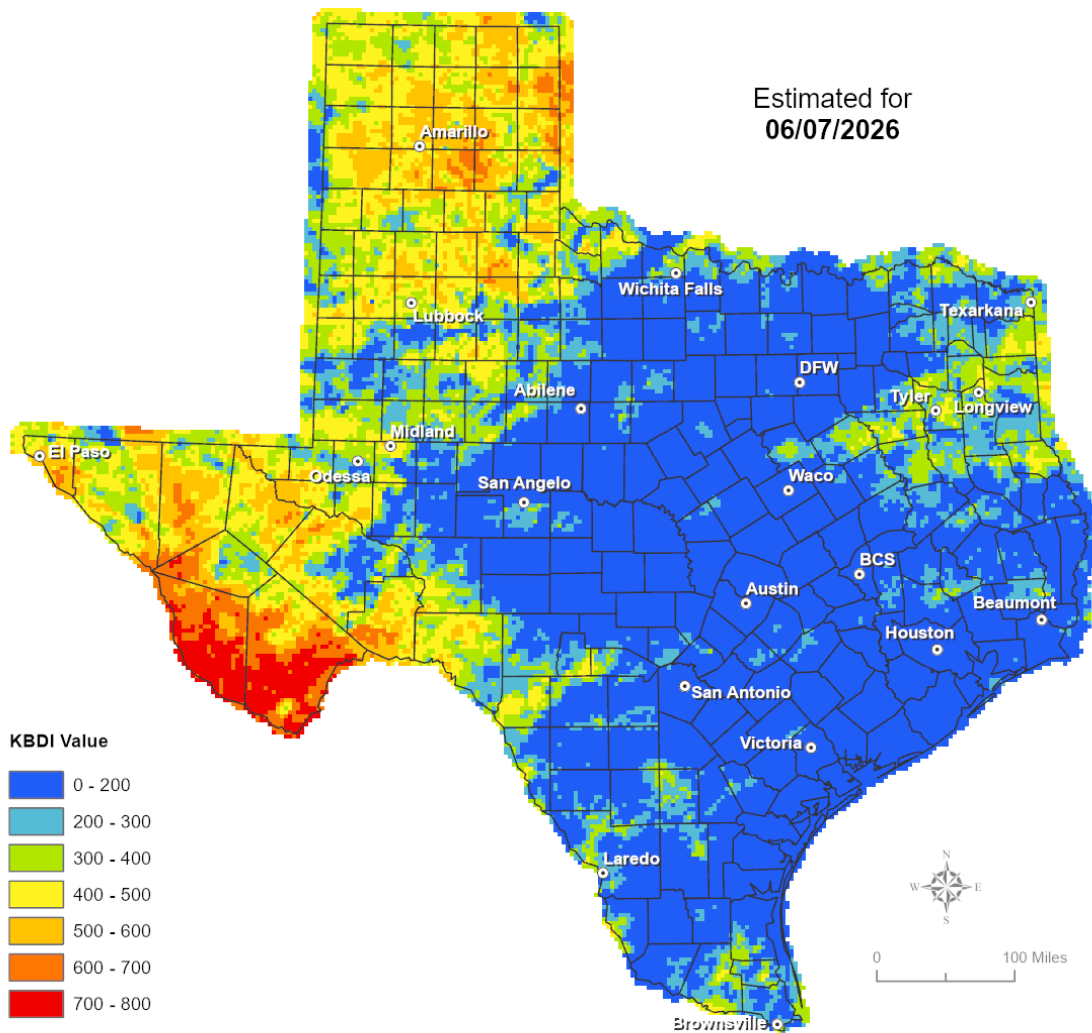
RED FLAG WARNINGS: www.weather.gov
 Additional map formats available at <https://tfsweb.tamu.edu/Burnbans/>

Keetch-Byram Drought Index

Keetch-Byram Drought Index

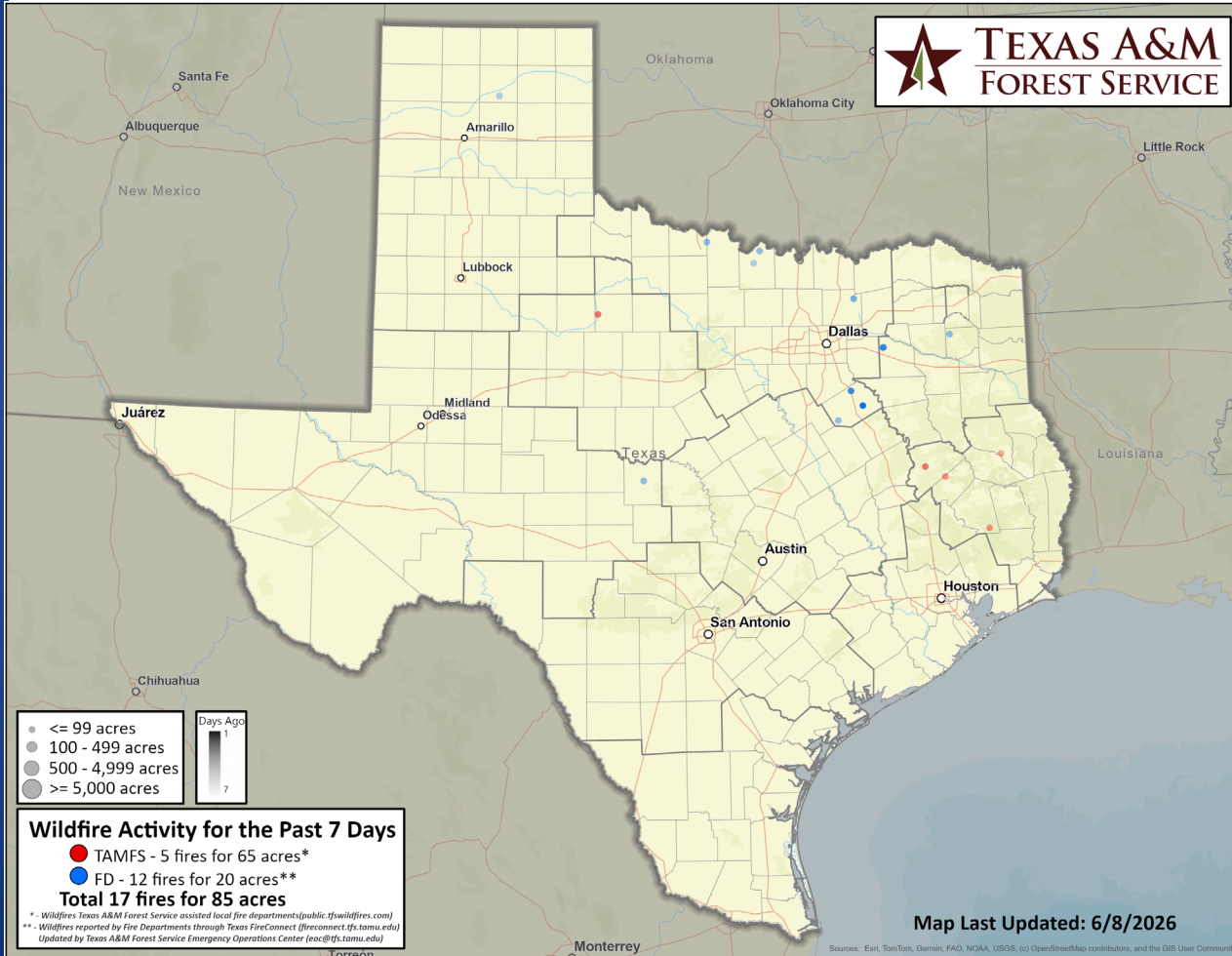
(4 km x 4 km resolution)

Estimated for
06/07/2026



Fire Activity (*Last 24 Hours)

Report of 703 fires (No Change) and 104,304 (No Change) acres have been burned this year. There are 87 (No Change) counties with burn bans. The Keetch–Byram Drought Index list contains 41 (No Change) counties with an average over 400.



Training

DATES		TITLE	COURSE	LOCATION
06/08/26	06/10/26	Intermediate Incident Command System for Expanding Incidents	G-300	Alvin
06/08/26	06/10/26	Intermediate Incident Command System for Expanding Incidents	G-300	Floresville
06/08/26	06/10/26	Intermediate Incident Command System for Expanding Incidents	G-300	Murphy